

09 SECTION 20 TOWN 07 RANGE

ADAMS COUNTY

COUNTY CORNER NO: 37
ROMPORTOL ID: 42007092000

PUBLIC LAND SURVEY MONUMENT RECORD

TYPE OF MONUMENT: HARRISON
ADAMS COUNTY COORDINATES, NAD 83 (2007)

N. 311652.422

E. 572747.073

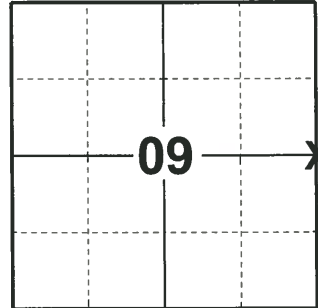
ELEVATION- - - - DATUM - - - -

FIELD WORK DATE: 2/17/2020

BASIS FOR MONUMENT LOCATION

1982 - PLS 1444 THIS CORNER WAS SET EQUIDISTANT AND ON LINE BETWEEN SECTION CORNERS. NO EVIDENCE OF THE ORIGINAL CORNER OR ANY RESURVEY CORNER.

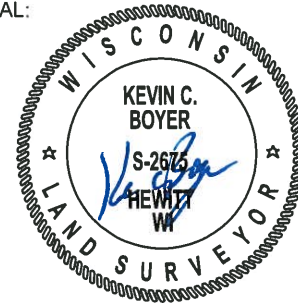
2019 - PLS 2675 FOUND HARRISON MONUMENT 2'± BELOW THE ROAD SURFACE AND 2 WITNESSES. THE MONUMENT AGREES WITH BOTH WITNESSES. ACCEPTED THE HARRISON MONUMENT AS THE CORNER LOCATION. SET 4 NEW TIES AND MEASURED TO THE EXISTING WITNESSES.



LOCATION

(INDICATE CORNER BY "X")

SEAL:



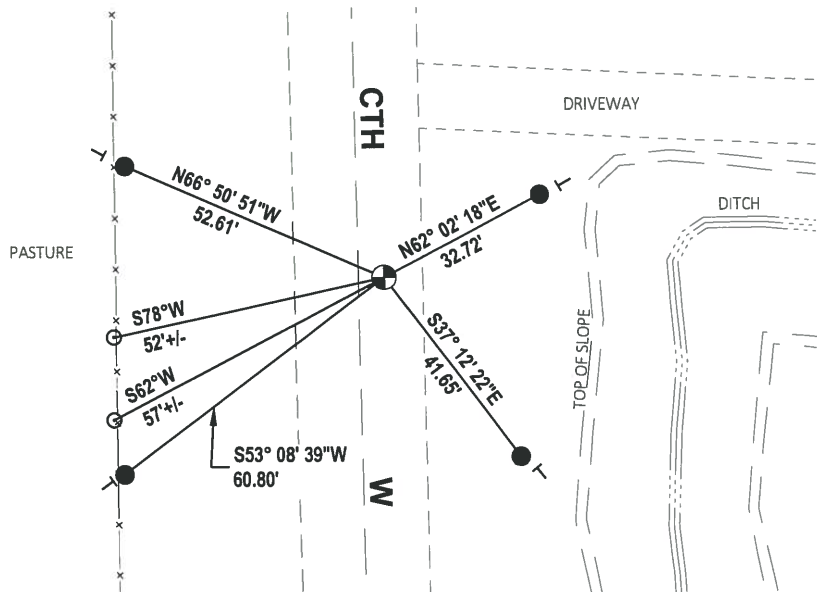
DATA SHOWN HERE ON THIS TIE SHEET IS CORRECT AND COMPLETE TO THE BEST OF MY KNOWLEDGE AND BELIEF.

PROFESSIONAL LAND SURVEYOR

DATE 3/9/2020

- TIE SKETCH

NOTE: THE CORNER LANDS 4.7'± EAST OF CTH W CENTERLINE.

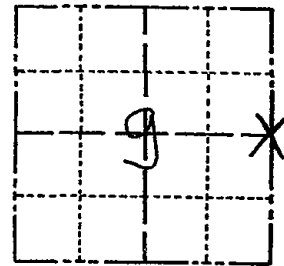


- SET 3/4" x 18" IRON REBAR, 1.50#/FT
- ⊕ FOUND HARRISON MONUMENT
- ⊢ VINYL "T" POST
- ⊙ FENCE POST WITH SPIKE AND BOTTLE CAP

Government Land Corner Certificate

ADAMS County
 TYPE OF MONUMENT: HARRISON
 STATE PLANE COORDINATES: N _____
 E _____
 ELEVATION — M.S.L. DATUM: _____
 THETA ANGLE: _____
 FIELD BOOK: 88 PAGE 148
 DRAWN BY: S.J.H.

CORNER NO. 37
 SECTION 9
 TOWN 20
 RANGE 7



LOCATION
 (Indicated by 'X')

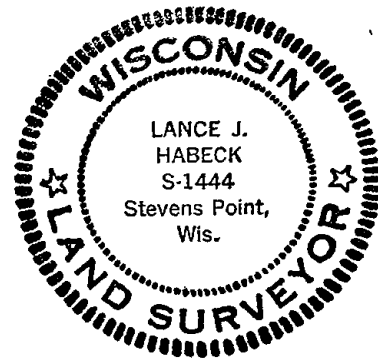
BASIS FOR MONUMENT LOCATION

Show info such as: History of corner, with reference to Vol. and pg., dates, surveyor; exact description of monument replaced; if location computed, by taped or EDM traverse; landowner remarks, etc. (Use reverse side if necessary)

This corner was set equidistant and on line between section corners. No evidence of the original corner or any resurvey corner.

Ok -4-30-84 SS-DK

SEAL:



DATA SHOWN HERE ON
 CERTIFIED CORRECT:

Lance J. Habeck
 Registered Land Surveyor

DATE: 6/9/82

TIE SKETCH

Show at least four ties, also fence lines, roads, topo, size and type of witness trees' and if off road - best way to arrive at corner.

