

12 SECTION 20 TOWN 07 RANGE

ADAMS COUNTY

COUNTY CORNER NO: 40

ROMPORTOL ID: 42007122000

PUBLIC LAND SURVEY MONUMENT RECORD

TYPE OF MONUMENT: HARRISON
ADAMS COUNTY COORDINATES, NAD 83 (2007)

N. 311770.205

E. 588499.154

ELEVATION- DATUM

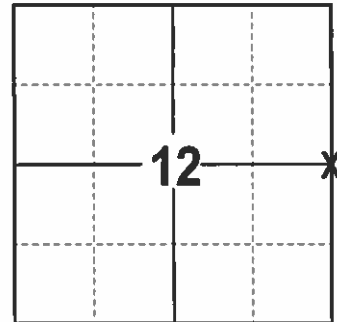
FIELD WORK DATE: 12/21/2016

BASIS FOR MONUMENT LOCATION

1976 - PLS 878 FOUND NO RECORD OF ANY SURVEYS IN EITHER ADAMS OR WAUSHARA COUNTIES. EXCAVATED AND FOUND NOTHING. SET A HARRISON ON A STRAIGHT LINE AND EQUIDISTANT BETWEEN SECTION CORNERS.

1991 - PLS 1118 FOUND THE HARRISON AND TIES.

2017 - PLS 2994 FOUND EXISTING HARRISON 10 INCHES BELOW THE ROAD SURFACE AND 1 EXISTING TIE. THE HARRISON AGREES WITH THE EXISTING TIE. ACCEPTED HARRISON AND SET 3 NEW TIES.



LOCATION
(INDICATE CORNER BY "X")

SEAL:



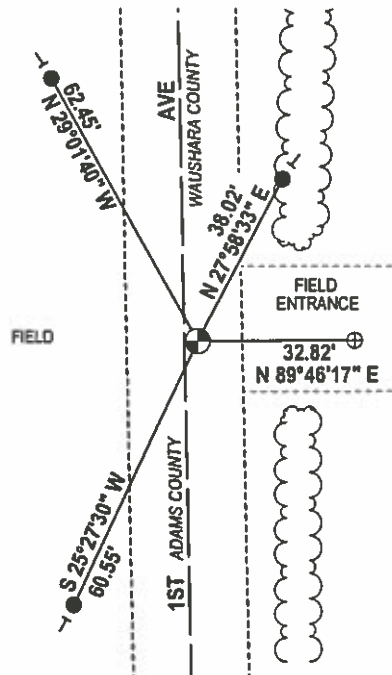
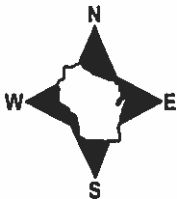
DATA SHOWN HERE ON THIS TIE SHEET IS CORRECT AND COMPLETE TO THE BEST OF MY KNOWLEDGE AND BELIEF.

PROFESSIONAL LAND SURVEYOR

DATE 2/9/17

- TIE SKETCH

NOTE: THE CORNER FALLS 3± EAST OF THE CENTERLINE OF 1ST AVE.

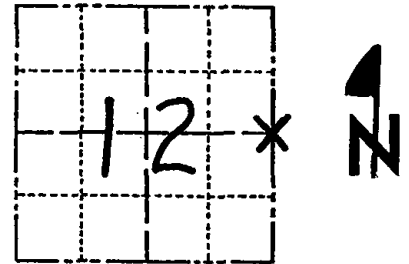


- 3/4" X 18" IRON REBAR SET, 1.50#/FT
- ⊕ 2-3/8" OD IRON PIPE WTH CAP FOUND
- ⊙ HARRISON FOUND
- VINYL "T" POST

Government Land Corner Certificate

ADAMS County
 TYPE OF MONUMENT: HARRISON
 STATE PLANE COORDINATES: N _____
 E _____
 ELEVATION — M.S.L. DATUM: _____
 THETA ANGLE: _____
 FIELD BOOK: 38 PAGE 6
 DRAWN BY: B. SULLIVAN

CORNER NO. 40
 SECTION 12
 TOWN 20
 RANGE 7



LOCATION
 (Indicated by 'X')

BASIS FOR MONUMENT LOCATION

Show info such as: History of corner, with reference to Vol. and pg., dates, surveyor; exact description of monument replaced; if location computed, by taped or EDM traverse; landowner remarks, etc. (Use reverse side if necessary)

No record of any resurveys in either Adams or Portage County. Excavated with backhoe. Found nothing. Corner set on line and equidistant between section corners.

SEAL:



See the reverse side for the updated map 5-2-84

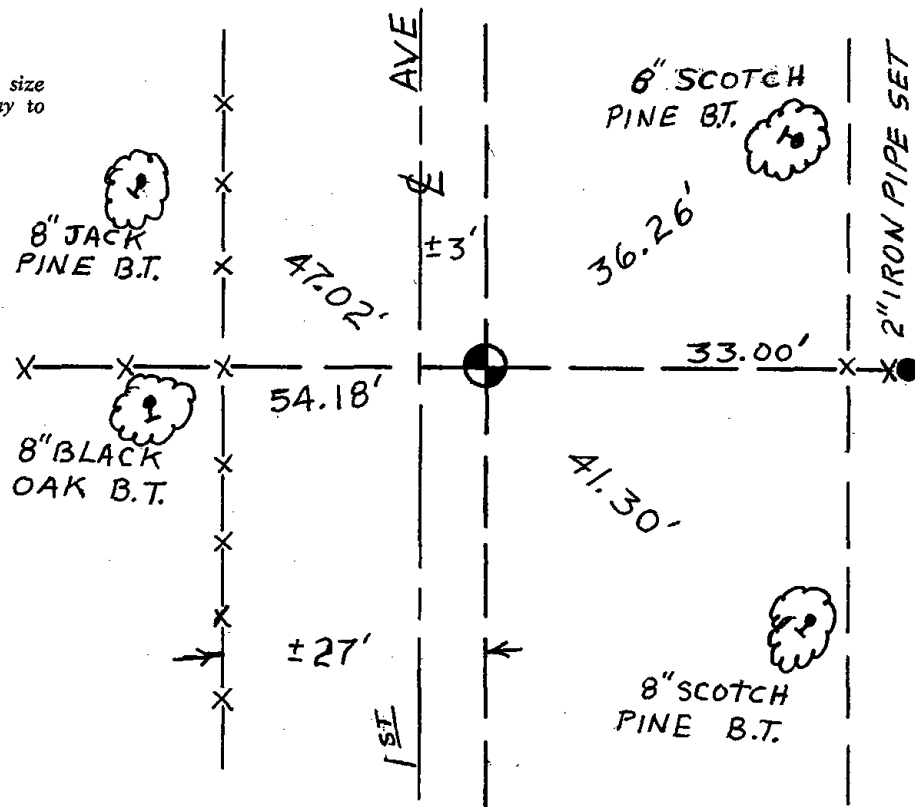
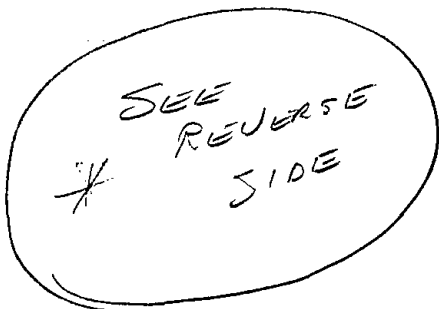
DATA SHOWN HERE ON
 CERTIFIED CORRECT:

Anthony B. Kiedrowski
 Registered Land Surveyor

DATE: 4/20/76

TIE SKETCH

Show at least four ties, also fence lines, roads, topo, size and type of witness trees and if off road - best way to arrive at corner.



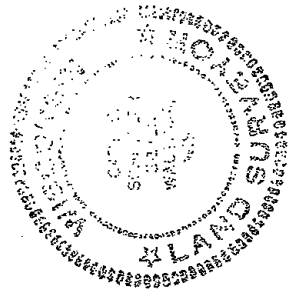
STATE OF WISCONSIN)
WAUSHARA COUNTY)

I, Gary E. Schindler, do hereby certify that on the 5th day of Oct, 1989, I found (evidence) (no evidence) of the West 1/4 corner of S& 12, T20 N, R 8 E, Fourth Principal Meridian, and I re-established said corner according to the Wisconsin Statutes as shown and described hereon.

Dated this 23rd day of Oct, 1991

Gary E. Schindler
Waushara County Surveyor

Procedure: Set ties as indicated.



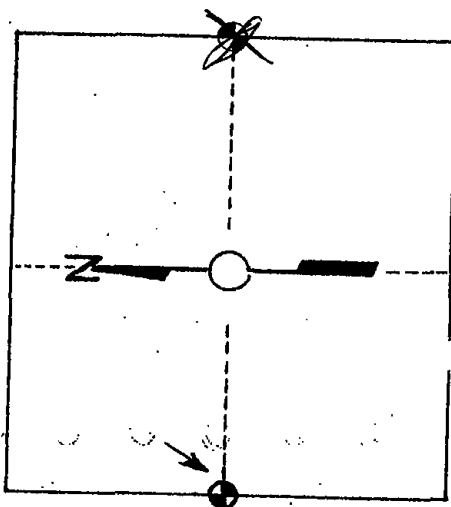
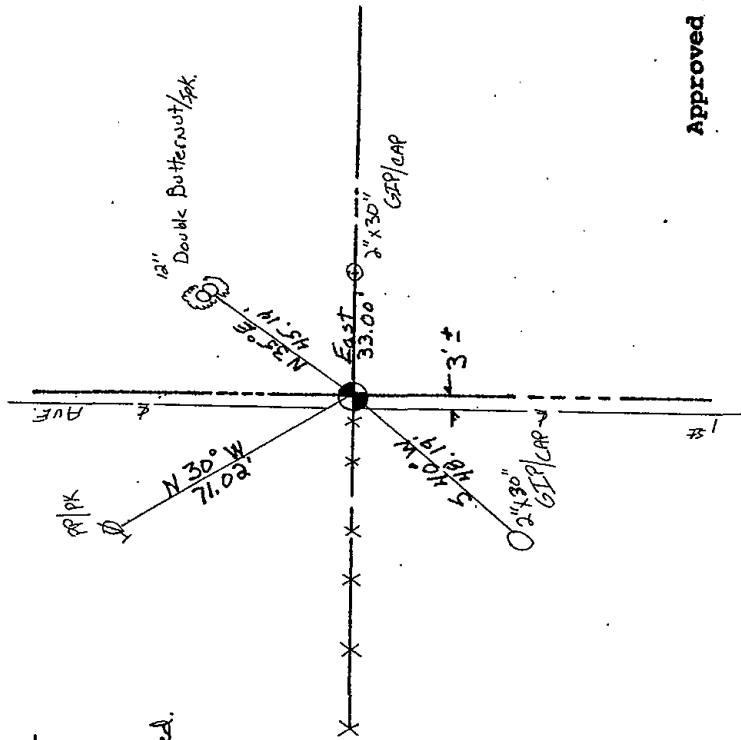
WAUSHARA COUNTY
CERTIFIED LAND CORNER

Description of corner evidence found:

Found Harrison and ties as set by Anthony B. Kiedrowski dated April 20, 1976.

No. 34
Witnesses to corner location:
AK Knight
DAW Entinger

Section 7



T. 20 N R. 8 E
WISCONSIN

Approved By: _____