

17
SECTION

20
TOWN

07
RANGE

ADAMS COUNTY

COUNTY CORNER NO: 56

ROMPORTOL ID: 42007172000

PUBLIC LAND SURVEY MONUMENT RECORD

TYPE OF MONUMENT: 1-1/4" IRON ROD
ADAMS COUNTY COORDINATES, NAD 83 (2007)

N. 306330.767

E. 567415.142

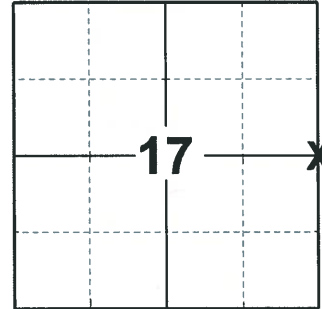
ELEVATION- DATUM

FIELD WORK DATE: 03/05/2020

BASIS FOR MONUMENT LOCATION

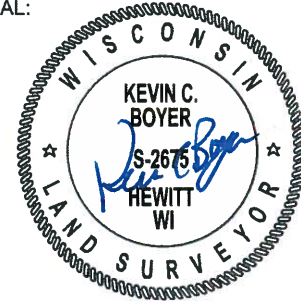
1982 - PLS 1444 THIS CORNER IS SET EQUIDISTANT AND ON LINE BETWEEN SECTION CORNERS. NO EVIDENCE OF ORIGINAL CORNER OR ANY RESURVEY CORNER.

2020 - PLS 2675 FOUND 1-1/4" IRON ROD 4"± BELOW THE GROUND AND NO TIES OR WITNESSES. THE MONUMENT WAS VERIFIED TO BE ON A NEAR STRAIGHT LINE AND EQUIDISTANT BETWEEN THE NE AND SE CORNER OF SECTION 17. ACCEPTED THE 1-1/4" IRON ROD AS THE BEST EVIDENCE OF THE CORNER LOCATION. SET 4 NEW TIES.



LOCATION
(INDICATE CORNER BY "X")

SEAL:

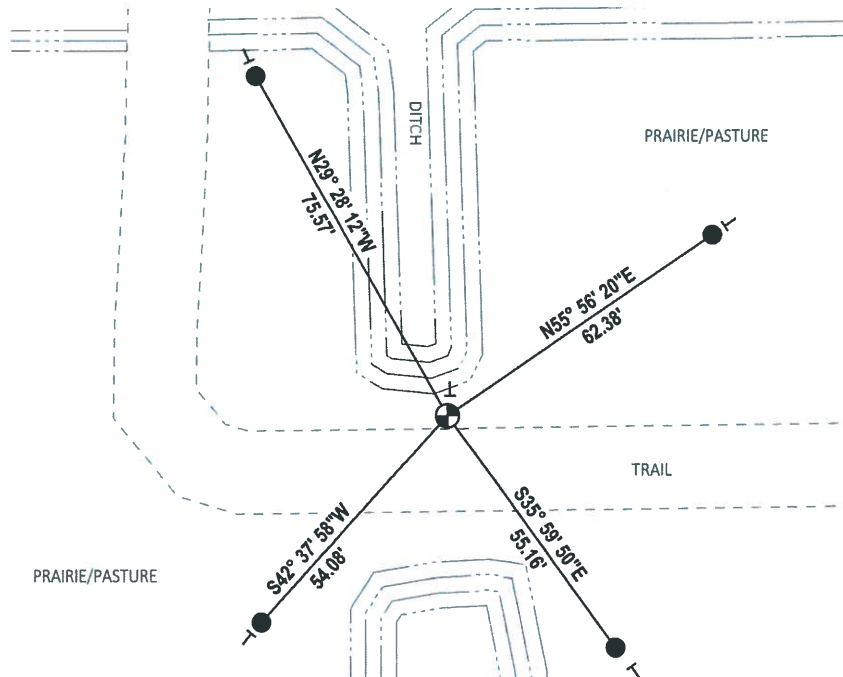


DATA SHOWN HERE ON THIS TIE SHEET IS CORRECT AND COMPLETE TO THE BEST OF MY KNOWLEDGE AND BELIEF.

PROFESSIONAL LAND SURVEYOR

DATE 3/25/2020

TIE SKETCH

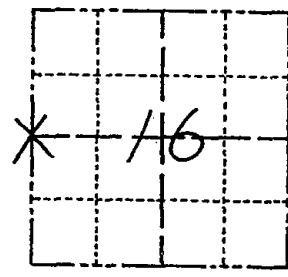


- SET 3/4" x 18" IRON REBAR, 1.50#/FT
- ⊕ FOUND 1-1/4" IRON ROD MONUMENT
- ┊ VINYL "T" POST

Government Land Corner Certificate

ADAMS County
 TYPE OF MONUMENT: HARRISON
 STATE PLANE COORDINATES: N _____
 E _____
 ELEVATION — M.S.L. DATUM: _____
 THETA ANGLE: _____
 FIELD BOOK: 88 PAGE 141
 DRAWN BY: S.J.H.

CORNER NO. 56
 SECTION 16
 TOWN 20
 RANGE 7



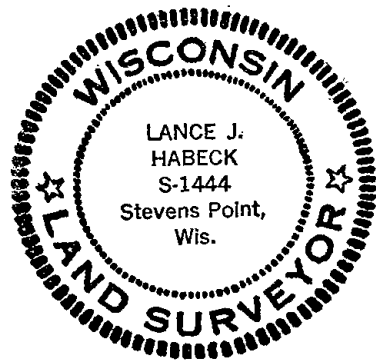
LOCATION
(Indicated by 'X')

BASIS FOR MONUMENT LOCATION

Show info such as: History of corner, with reference to Vol. and pg., dates, surveyor; exact description of monument replaced; if location computed, by taped or EDM traverse; landowner remarks, etc. (Use reverse side if necessary)

This corner is set equidistant and on line between section corners. No evidence of original corner or any resurvey corner.

SEAL:



DATA SHOWN HERE ON
CERTIFIED CORRECT:

Lance J. Habeck
Registered Land Surveyor

DATE: 6/9/82

TIE SKETCH

Show at least four ties, also fence lines, roads, topo, size and type of witness trees' and if off road - best way to arrive at corner.

