

15
SECTION

20
TOWN

07
RANGE

ADAMS COUNTY

COUNTY CORNER NO: 58

ROMPORTOL ID: 42007152000

PUBLIC LAND SURVEY MONUMENT RECORD

TYPE OF MONUMENT: HARRISON

ADAMS COUNTY COORDINATES, NAD 83 (2007)

N. 306325.349

E. 578045.668

ELEVATION- _____ DATUM _____

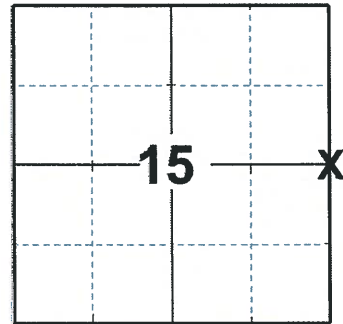
FIELD WORK DATE: 02/24/2020

BASIS FOR MONUMENT LOCATION

1983 - PLS 1444 THIS CORNER WAS SET EQUIDISTANT AND ON LINE BETWEEN SECTION CORNERS. DID NOT EXCAVATE AT THIS LOCATION BECAUSE IT FALLS ON THE EDGE OF CULTIVATED AREA AND ALL EVIDENCE WOULD HAVE BEEN DESTROYED.

2020 - PLS 2675 FOUND HARRISON 18"± BELOW THE GROUND AND 2 TIES. THE MONUMENT AGREES WITH BOTH TIES. ACCEPTED THE HARRISON AS THE CORNER LOCATION. SET 2 NEW TIES AND MEASURED TO THE FOUND TIES.

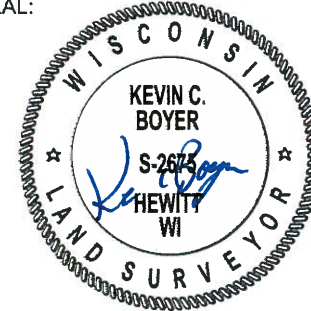
NOTE: DID NOT DIG THE EASTERLY TIES SINCE UNDER THE ROAD, BUT BOTH EASTERLY TIES EXIST UNDER THE ROAD



LOCATION

(INDICATE CORNER BY "X")

SEAL:



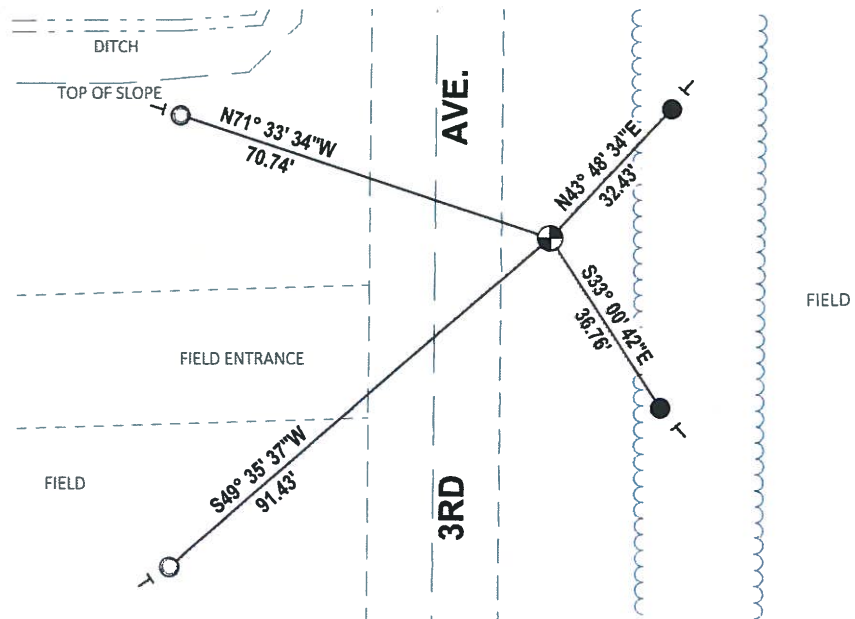
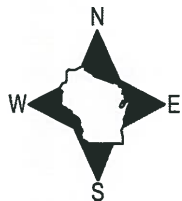
DATA SHOWN HERE ON THIS TIE SHEET IS CORRECT AND COMPLETE TO THE BEST OF MY KNOWLEDGE AND BELIEF.

PROFESSIONAL LAND SURVEYOR

DATE 3/25/2020

- TIE SKETCH

NOTE: THE CORNER LANDS 20.7'± EAST OF 3RD AVE. CENTERLINE.

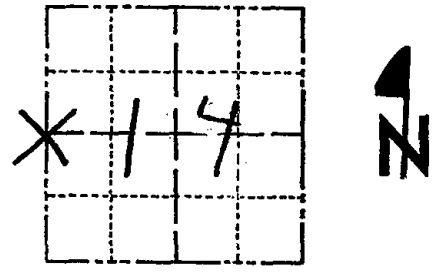


- SET 3/4" x 18" IRON REBAR, 1.50#/FT
- FOUND 1-1/4" O.D. IRON PIPE
- ⊕ FOUND HARRISON MONUMENT
- VINYL "T" POST

Government Land Corner Certificate

ADAMS County
 TYPE OF MONUMENT: HARRISON
 STATE PLANE COORDINATES: N _____
 E _____
 ELEVATION — M.S.L. DATUM: _____
 THETA ANGLE: _____
 FIELD BOOK: 91 PAGE 67
 DRAWN BY: S.J.H.

CORNER NO. 58
 SECTION 14
 TOWN 20
 RANGE 7



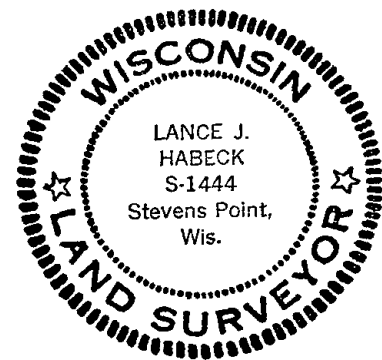
LOCATION
(Indicated by 'X')

BASIS FOR MONUMENT LOCATION

Show info such as: History of corner, with reference to Vol. and pg., dates, surveyor; exact description of monument replaced; if location computed, by taped or EDM traverse; landowner remarks, etc. (Use reverse side if necessary)

This corner was set equidistant and on line between Section corners. Did not excavate at this location because it falls on the edge of cultivated area and all evidence would have been destroyed.

SEAL:



DATA SHOWN HERE ON
CERTIFIED CORRECT:

Lance J. Habeck
Registered Land Surveyor

DATE: 4/29/83

TIE SKETCH

Show at least four ties, also fence lines, roads, topo, size and type of witness trees and if off road - best way to arrive at corner.

NOTE: ALL TIES TO
1" x 24" IRON PIPES

