

## PUBLIC LAND SURVEY MONUMENT RECORD

TYPE OF MONUMENT: SURVEY NAIL

ADAMS COUNTY COORDINATES, NAD 83 (2007)

N. 306401.193

E. 583330.586

ELEVATION- - - - - DATUM - - - - -

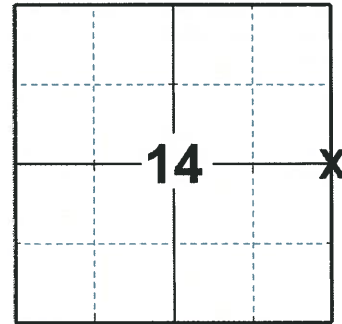
FIELD WORK DATE: 02/24/2020

### BASIS FOR MONUMENT LOCATION

1973 - PLS 878 EXCAVATED WITH BACKHOE. FOUND REMNANT OF DRIVEN CEDAR POST. ALSO FOUND HOLE FROM A DUG IN POST. ALSO FOUND A RAILROAD SPIKE IN BLACKTOP 0.1' NORTH AND 0.9' EAST OF DRIVEN CEDAR POST. MONUMENTED LOCATION OF DRIVEN WOOD CEDAR POST AND CONFIRMED LOCATION BY A TRAVERSE ENTIRE SECTION.

2013 - PLS 1478 FOUND HARRISON IN PLACE 8-16-13 AND REMOVED BECAUSE OF ROAD CONSTRUCTION AND SET IRON RODS FOR NEW TIES. SET MAG NAIL IN PLACE OF HARRISON ON 10-24-2013 AFTER ROAD CONSTRUCTION COMPLETED.

2020 - PLS 2675 FOUND SURVEY NAIL IN THE ROAD SURFACE AND 4 TIES (NW AND SW HAVE BEEN DISTURBED). THE MONUMENT AGREES WITH THE NE AND SE TIES. ACCEPTED THE SURVEY NAIL AS THE CORNER LOCATION. STRAIGHTENED THE NW AND SW TIES AND MEASURED TO ALL 4 EXISTING TIES.



LOCATION  
(INDICATE CORNER BY "X")

SEAL:



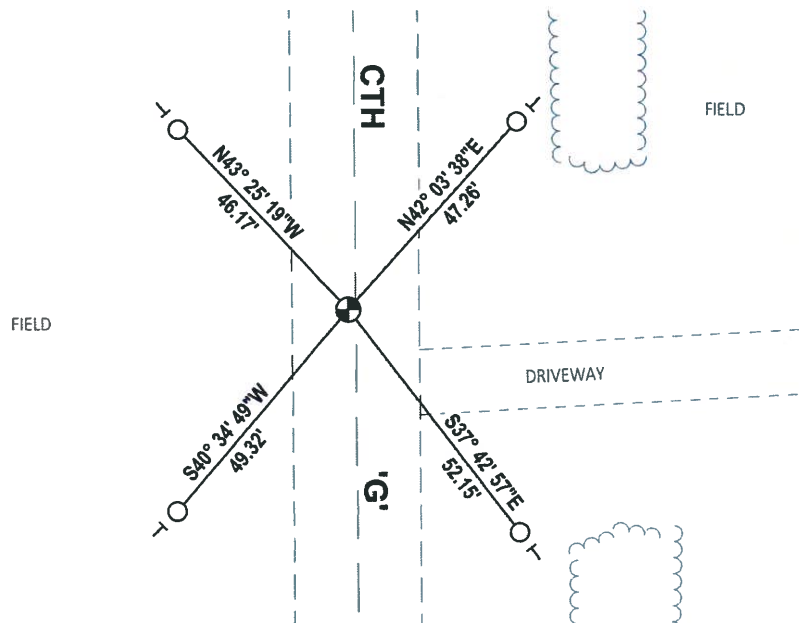
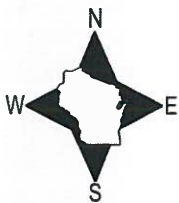
DATA SHOWN HERE ON THIS TIE SHEET IS CORRECT AND COMPLETE TO THE BEST OF MY KNOWLEDGE AND BELIEF.

PROFESSIONAL LAND SURVEYOR

DATE 3/25/2020

### - TIE SKETCH

NOTE: THE CORNER LANDS 1.5± WEST OF CTH 'G' CENTERLINE.



- FOUND 3/4" IRON ROD
- ⊙ FOUND SURVEY NAIL MONUMENT
- VINYL "T" POST

