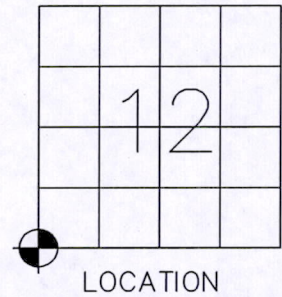


U.S PUBLIC LAND SURVEY MONUMENT RECORD
ADAMS COUNTY, WISCONSIN

CORNER NO. 61
SECTION 12
TOWN 20N
RANGE 7E

TYPE OF MONUMENT: Mag Nail

ADAMS COUNTY COORDINATES: N: 309,041.060 ft
E: 583,333.572 ft
ELEVATION _ MSL DATUM: NOT APPLICABLE
THETA ANGLE: NOT APPLICABLE
FIELD BOOK: 88, PAGE 130
DRAWN BY: ERIC SCHOOT



BASIS FOR MONUMENT LOCATION

Show info such as: History of corner, with reference to Vol. and pg., dates, surveyor; exact description of monument replaced if location computed, by taped or EDM traverse, landowner remarks, etc.

Set by analyzing a traverse of Section 13, comparing possession lines with original notes. Corner lost in construction. Set new monument and took new ties.
- Anthony Kiedrowski 5-25-82

Found Harrison in place 8-16-13 but did not remove for road construction and Set iron rods for new ties. Set mag nail on top of Harrison on 10-24-13 after road construction completed.

SEAL

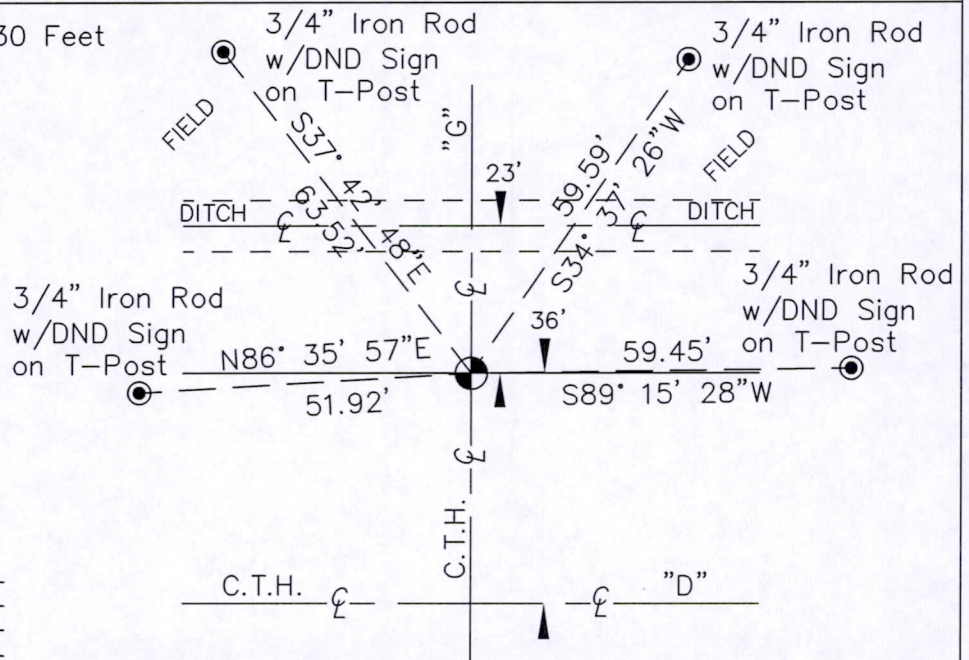


DATA SHOWN HEREON
CERTIFIED CORRECT:

Gregory P. Rhinehart

REGISTERED LAND SURVEYOR
DATE: 2 December, 2013

TIE SKETCH: 1 Inch = 30 Feet



MAINTENANCE RECORD

DATE	INIT.	REMARKS