

## PUBLIC LAND SURVEY MONUMENT RECORD

TYPE OF MONUMENT: HARRISON  
 ADAMS COUNTY COORDINATES, NAD 83 (2007)

N. 303676.450

E. 564732.057

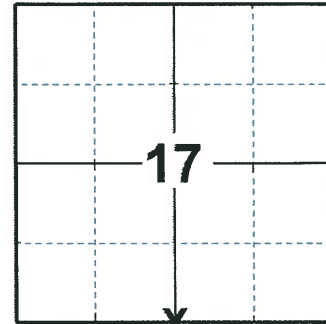
ELEVATION- - - - - DATUM - - - - -

FIELD WORK DATE: 03/09/2020

### BASIS FOR MONUMENT LOCATION

1981 - PLS 878 NO RECORD OF ANY RESURVEYS. DID NOT EXCAVATE SINCE THERE IS NO OCCUPATION EVIDENCE AS TO WHERE TO DIG, AND ROAD IS IN A DEEP FILL, BEING ON TOP OF THE DITCH BANK. CORNER IS SET ON LINE AND EQUIDISTANT BETWEEN SECTION CORNERS.

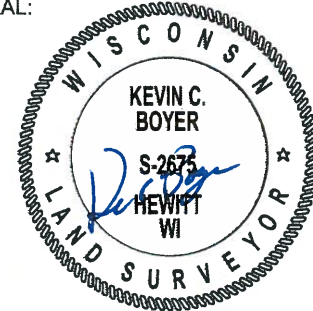
2020 - PLS 2675 FOUND HARRISON MONUMENT 8"± BELOW THE ROAD SURFACE AND 3 TIES (NORTH TIE DISTURBED). THE MONUMENT AGREES WITH BOTH GOOD TIES. ACCEPTED THE HARRISON MONUMENT AS THE CORNER LOCATION. SET 1 NEW TIE, STRAIGHTENED THE DISTURBED TIE, AND MEASURED TO THE EXISTING TIES.



**LOCATION**

(INDICATE CORNER BY "X")

SEAL:



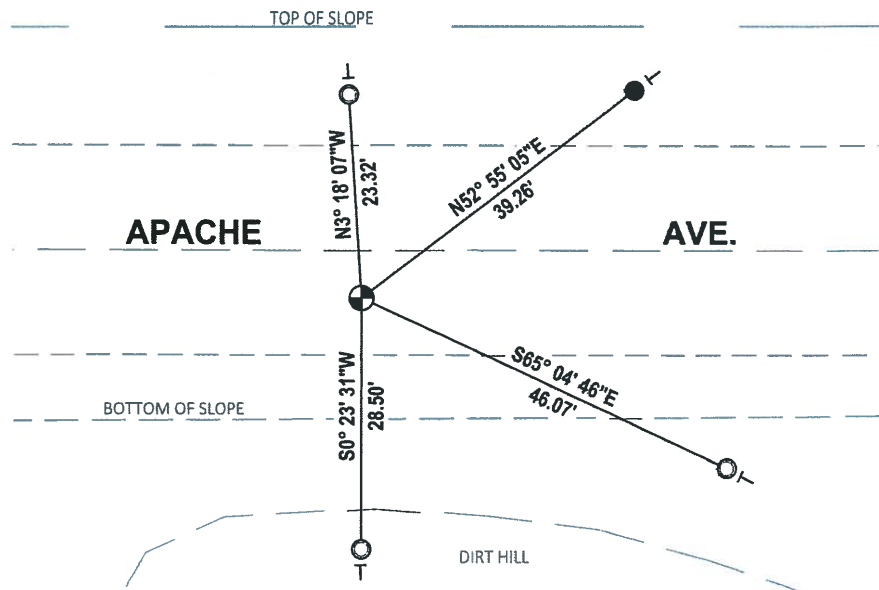
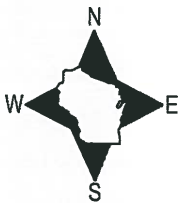
DATA SHOWN HERE ON THIS TIE SHEET IS CORRECT AND COMPLETE TO THE BEST OF MY KNOWLEDGE AND BELIEF.

PROFESSIONAL LAND SURVEYOR

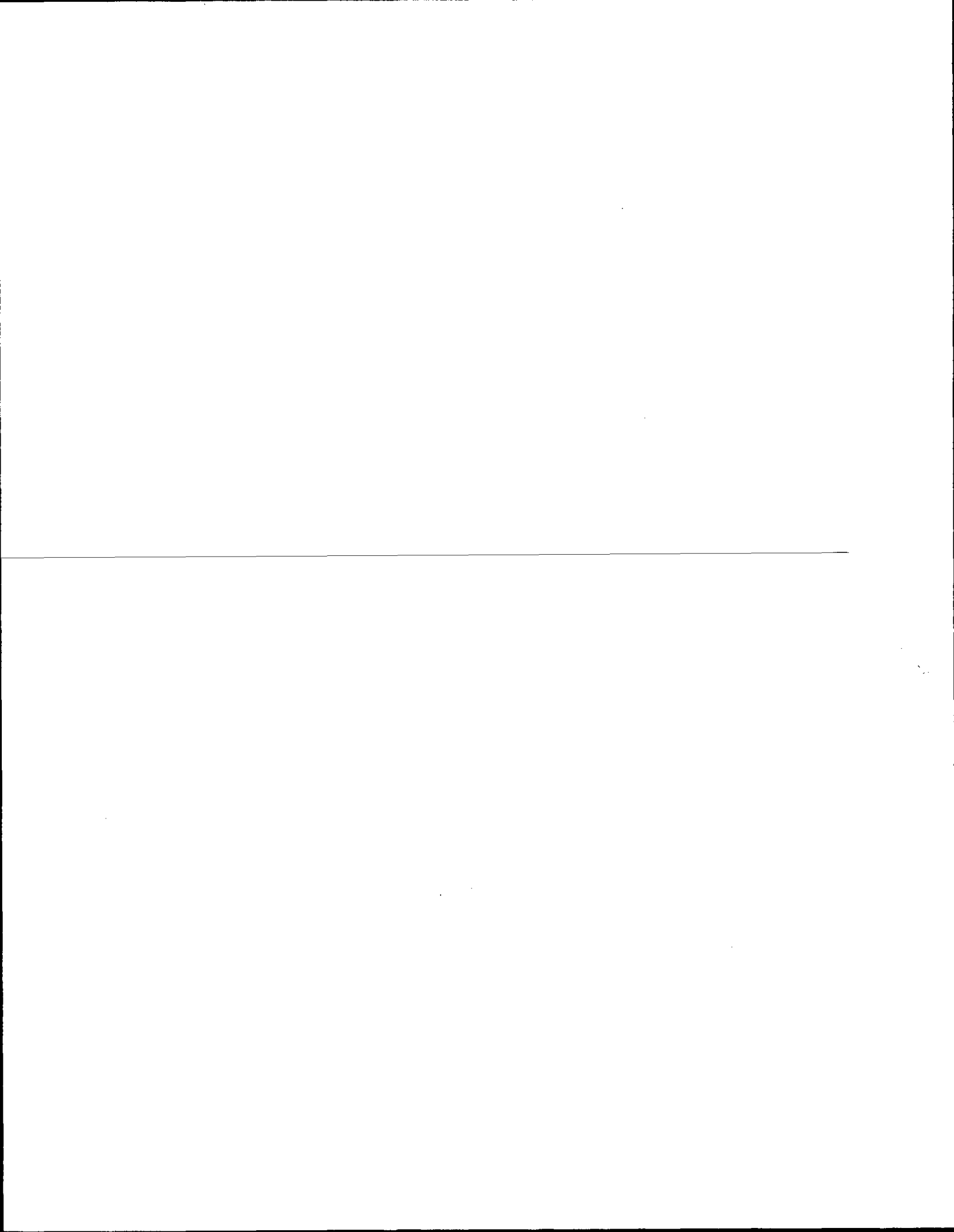
DATE 3/25/2020

### - TIE SKETCH

NOTE: THE CORNER LANDS 2.4'± SOUTH OF APACHE AVE. CENTERLINE



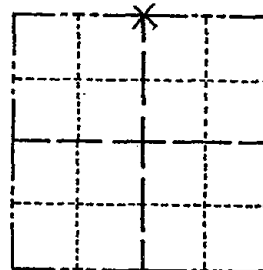
- SET 3/4" x 18" IRON REBAR, 1.50#/FT
- FOUND 1-1/4" O.D. IRON PIPE
- ⊕ FOUND HARRISON MONUMENT
- | VINYL "T" POST



# Government Land Corner Certificate

ADAMS County  
 TYPE OF MONUMENT: HARRISON  
 STATE PLANE COORDINATES: N \_\_\_\_\_  
 E \_\_\_\_\_  
 ELEVATION — M.S.L. DATUM: \_\_\_\_\_  
 THETA ANGLE: \_\_\_\_\_  
 FIELD BOOK: 88 PAGE 79  
 DRAWN BY: L. COOMBS

CORNER NO. 64  
 SECTION 20  
 TOWN 20  
 RANGE 7



LOCATION  
(Indicated by 'X')

SEAL:



DATA SHOWN HERE ON  
CERTIFIED CORRECT:

*Anthony B. Kiedrowski*  
 Registered Land Surveyor  
 11/4/81

DATE: \_\_\_\_\_

## BASIS FOR MONUMENT LOCATION

Show info such as: History of corner, with reference to Vol. and pg., dates, surveyor; exact description of monument replaced; if location computed, by taped or EDM traverse; landowner remarks, etc. (Use reverse side if necessary)

No record of any resurveys. Did not excavate since there is no occupation evidence as to where to dig, and road is in a deep fill, being on top of the ditch bank. Corner is set on line and equidistant between section corners.

Ok 4-20-84 SS-DK  
 OK 4/15/94 JG-SS  
 OK 2-19-99 JG  
 OK 8-26-04 SS  
 " 03-02-09 SS

## TIE SKETCH

Show at least four ties, also fence lines, roads, topo, size and type of witness trees' and if off road - best way to arrive at corner.

