

15  
SECTION

20  
TOWN

07  
RANGE

# ADAMS COUNTY

COUNTY CORNER NO: 68

ROMPORTOL ID: 42007150020

## PUBLIC LAND SURVEY MONUMENT RECORD

TYPE OF MONUMENT: HARRISON  
ADAMS COUNTY COORDINATES, NAD 83 (2007)

N. 303702.908

E. 575370.298

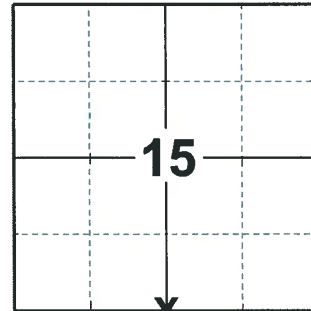
ELEVATION- \_\_\_\_\_ DATUM \_\_\_\_\_

FIELD WORK DATE: 03/09/2020

### BASIS FOR MONUMENT LOCATION

1983 - PLS 1444 THIS CORNER WAS SET EQUIDISTANT AND ON LINE BETWEEN ADJACENT SECTION CORNERS. CORNER FALLS ON EDGE OF DITCH BANK AND ANY TRACE OF PREVIOUS MONUMENTATION WOULD HAVE BEEN DESTROYED.

2020 - PLS 2675 FOUND HARRISON 4"± ABOVE THE GROUND AND 4 TIES (NE TIE DISTURBED). THE MONUMENT AGREES WITH 3 OF THE TIES. ACCEPTED THE HARRISON AS THE CORNER LOCATION. RESET THE NE TIE AND MEASURED TO THE 3 EXISTING TIES.



**LOCATION**

(INDICATE CORNER BY "X")

SEAL:



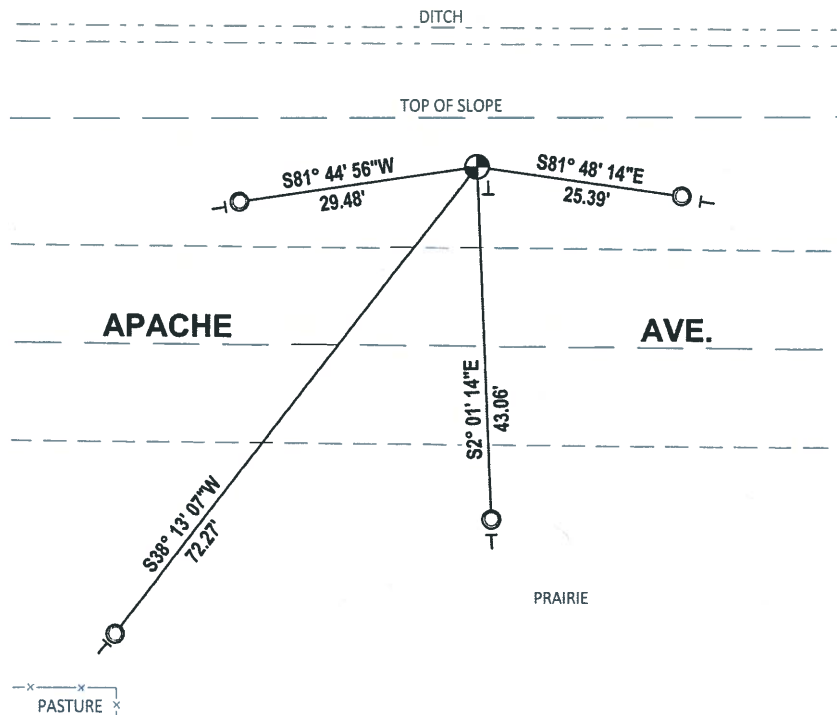
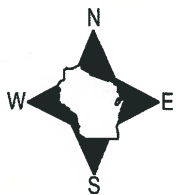
DATA SHOWN HERE ON THIS TIE SHEET IS CORRECT AND COMPLETE TO THE BEST OF MY KNOWLEDGE AND BELIEF.

PROFESSIONAL LAND SURVEYOR

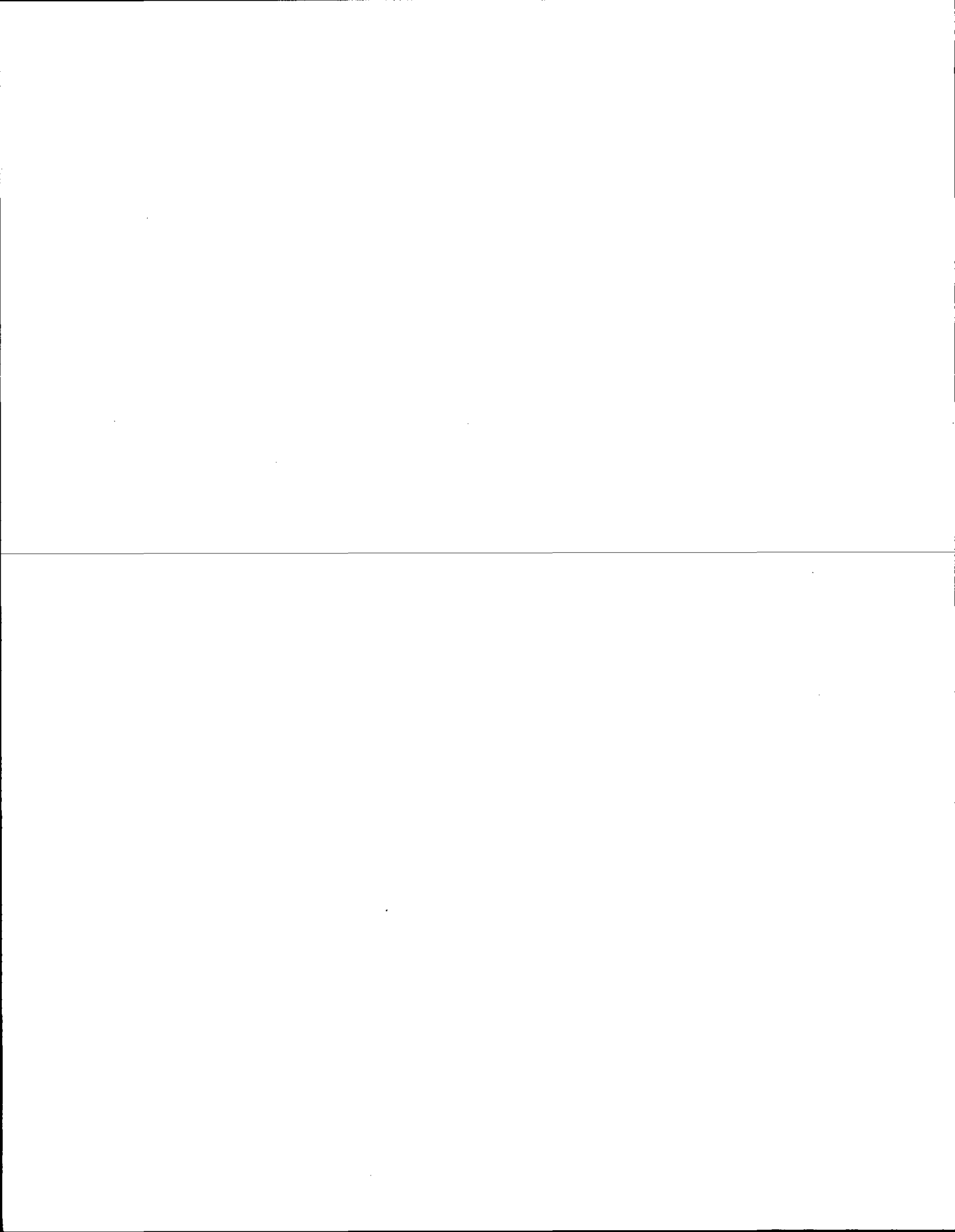
DATE 3/25/2020

### - TIE SKETCH

NOTE: THE CORNER LANDS 24.5'± NORTH OF APACHE AVE. CENTERLINE.



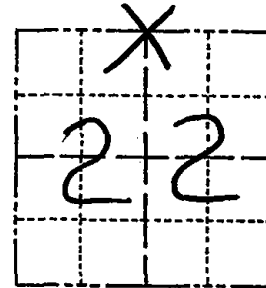
- FOUND 1-1/4" O.D. IRON PIPE
- ⊕ FOUND HARRISON MONUMENT
- | VINYL "T" POST



# Government Land Corner Certificate

ADAMS County  
 TYPE OF MONUMENT: HARRISON  
 STATE PLANE COORDINATES: N \_\_\_\_\_  
 E \_\_\_\_\_  
 ELEVATION — M.S.L. DATUM: \_\_\_\_\_  
 THETA ANGLE: \_\_\_\_\_  
 FIELD BOOK: 91 PAGE 66  
 DRAWN BY: S.J.H.

CORNER NO. 68  
 SECTION 22  
 TOWN 20  
 RANGE 7



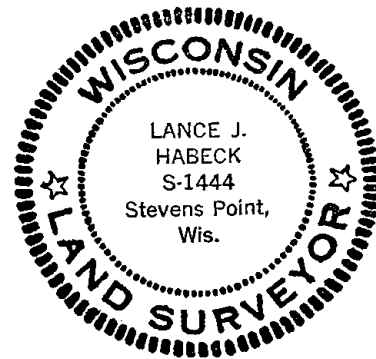
LOCATION  
 (Indicated by 'X')

## BASIS FOR MONUMENT LOCATION

Show info such as: History of corner, with reference to Vol. and pg., dates, surveyor; exact description of monument replaced; if location computed, by taped or EDM traverse; landowner remarks, etc. (Use reverse side if necessary)

This corner was set equidistant and on line between adjacent Section corners. Corner falls on edge of ditch bank and any trace of previous monumentation would have been destroyed.

SEAL:



DATA SHOWN HERE ON  
 CERTIFIED CORRECT:

*Lance J. Habeck*  
 Registered Land Surveyor

DATE: 4/29/83

## TIE SKETCH

Show at least four ties, also fence lines, roads, topo, size and type of witness trees and if off road - best way to arrive at corner.

NOTE: ALL TIES TO  
 1" x 24" IRON PIPES

