

14
SECTION

20
TOWN

07
RANGE

ADAMS COUNTY

COUNTY CORNER NO: 70

ROMPORTOL ID: 42007140020

PUBLIC LAND SURVEY MONUMENT RECORD

TYPE OF MONUMENT: HARRISON

ADAMS COUNTY COORDINATES, NAD 83 (2007)

N. 303724.964

E. 580685.053

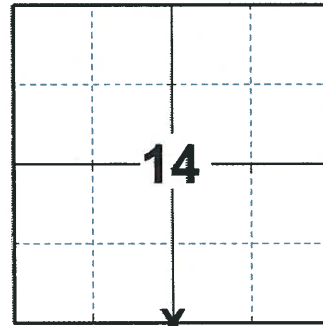
ELEVATION- DATUM

FIELD WORK DATE: 03/09/2020

BASIS FOR MONUMENT LOCATION

1983 - PLS 1444 THIS CORNER WAS SET EQUIDISTANT AND ON LINE BETWEEN SECTION CORNERS. EXCAVATION WITH BACKHOE AT THIS CORNER YIELDED NOTHING.

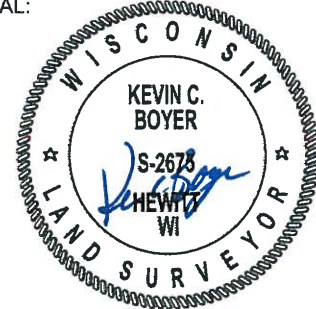
2020 - PLS 2675 FOUND HARRISON 6"± BELOW THE ROAD AND 2 TIES. THE SW TIE WAS DISTURBED BUT THE NW AGREES WITH THE MONUMENT. ACCEPTED THE HARRISON AS THE CORNER LOCATION. SET 2 NEW TIES, STRAIGHTENED THE SW TIE, AND MEASURED TO 2 FOUND IRON RODS.



LOCATION

(INDICATE CORNER BY "X")

SEAL:



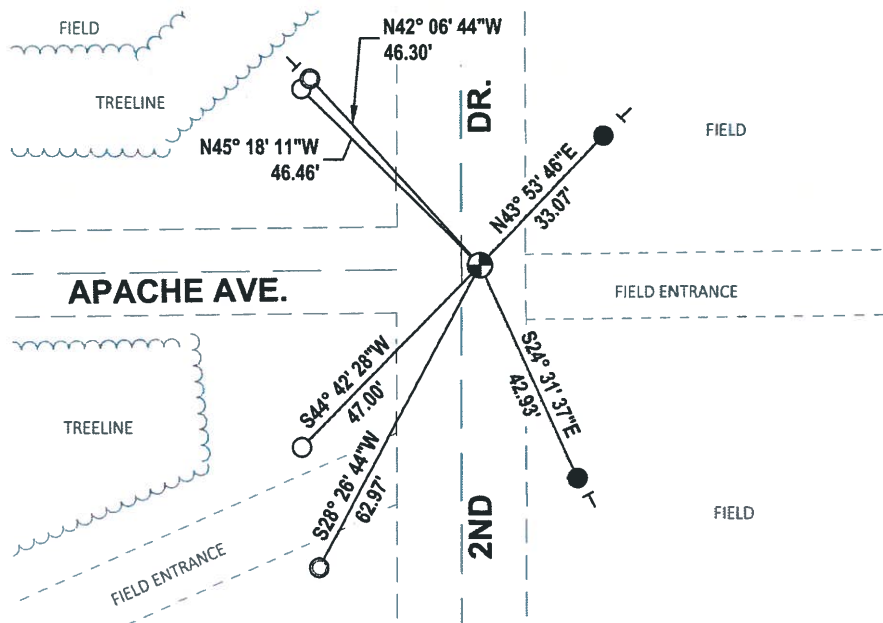
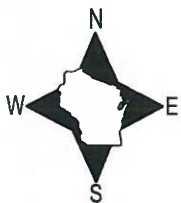
DATA SHOWN HERE ON THIS TIE SHEET IS CORRECT AND COMPLETE TO THE BEST OF MY KNOWLEDGE AND BELIEF.

PROFESSIONAL LAND SURVEYOR

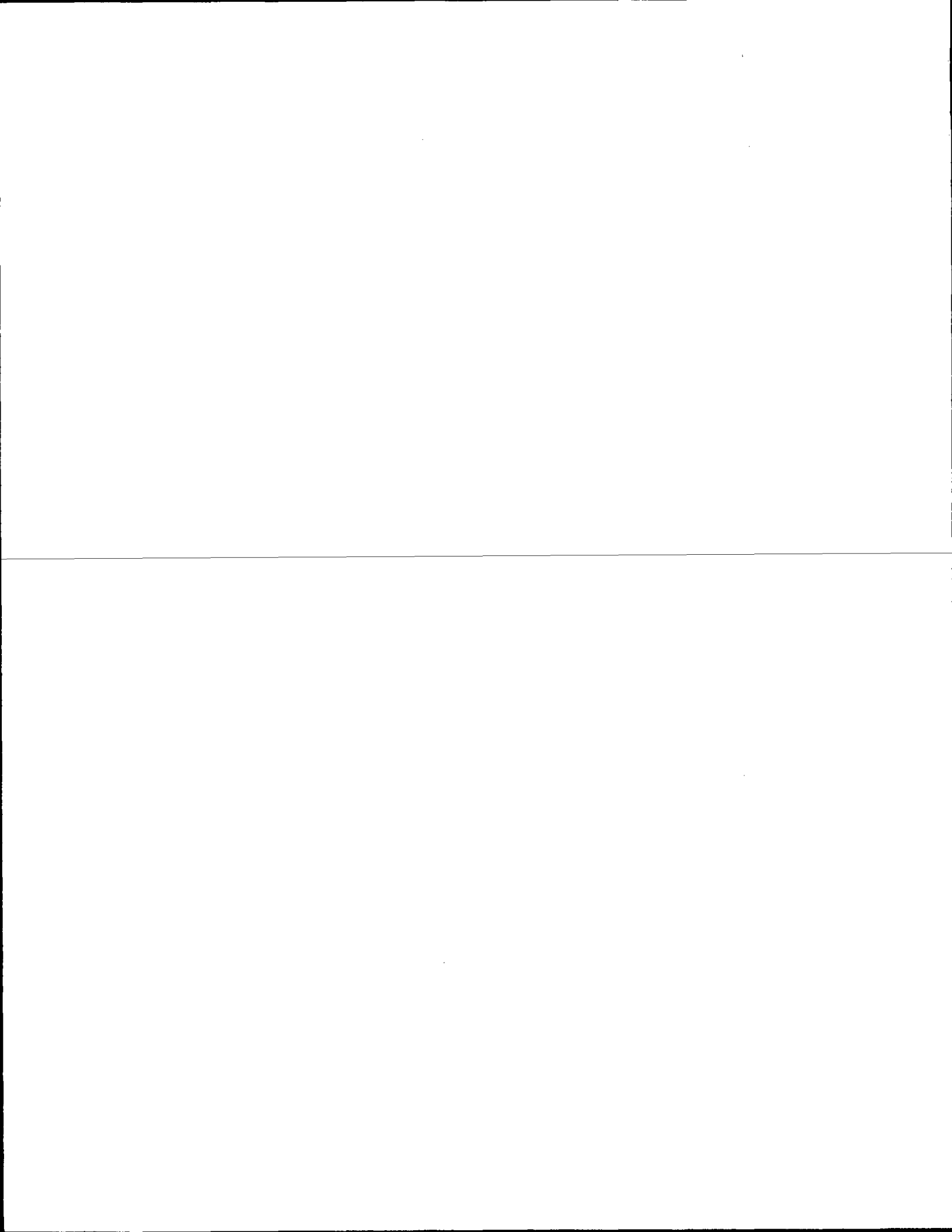
DATE 3/25/2020

TIE SKETCH

NOTE: THE CORNER LANDS 3.3'± EAST OF 2ND DR. CENTERLINE.



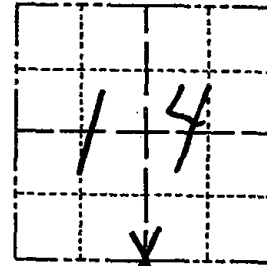
- SET 3/4" x 18" IRON REBAR, 1.50#/FT
- FOUND 3/4" IRON ROD
- FOUND 1-1/4" O.D. IRON PIPE
- ⊕ FOUND HARRISON MONUMENT
- VINYL "T" POST



Government Land Corner Certificate

ADAMS County
 TYPE OF MONUMENT: HARRISON
 STATE PLANE COORDINATES: N _____
 E _____
 ELEVATION — M.S.L. DATUM: _____
 THETA ANGLE: _____
 FIELD BOOK: 91 PAGE 68
 DRAWN BY: S.J.H.

CORNER NO. 70
 SECTION 14
 TOWN 20
 RANGE 7



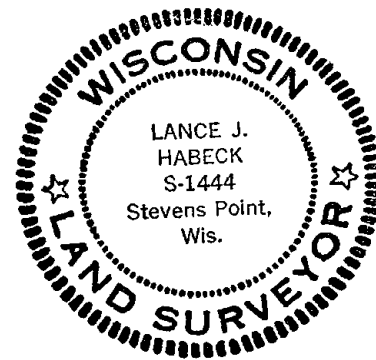
LOCATION
 (Indicated by 'X')

BASIS FOR MONUMENT LOCATION

Show info such as: History of corner, with reference to Vol. and pg., dates, surveyor; exact description of monument replaced; if location computed, by taped or EDM traverse; landowner remarks, etc. (Use reverse side if necessary)

This corner was set equidistant and on line between Section corners. Excavation with backhoe at this corner yielded nothing.

SEAL:



DATA SHOWN HERE ON
 CERTIFIED CORRECT:

Lance J. Habeck
 Registered Land Surveyor

DATE: 4/29/83

Ok 4-30-84 DK-SS

TIE SKETCH

Show at least four ties, also fence lines, roads, topo, size and type of witness trees and if off road - best way to arrive at corner.

