

14
SECTION

20
TOWN

07
RANGE

ADAMS COUNTY

COUNTY CORNER NO: 71

ROMPORTOL ID: 42007140000

PUBLIC LAND SURVEY MONUMENT RECORD

TYPE OF MONUMENT: SURVEY NAIL

ADAMS COUNTY COORDINATES, NAD 83 (2007)

N. 303761.394

E. 583333.724

ELEVATION- DATUM

FIELD WORK DATE: 02/24/2020

BASIS FOR MONUMENT LOCATION

1973 -PLS 878 EXCAVATED WITH BACKHOE, FOUND NOTHING. POINT ESTABLISHED BY TRAVERSE OF ENTIRE SECTION AND COMPARING ORIGINAL NOTES AND POSSESSION LINES.

2013 - PLS 1478 FOUND HARRISON IN PLACE 8-16-13 AND REMOVED BECAUSE OF ROAD CONSTRUCTION AND SET IRON RODS FOR NEW TIES. SET MAG NAIL IN PLACE OF HARRISON ON 10-25-13 AFTER ROAD CONSTRUCTION COMPLETED.

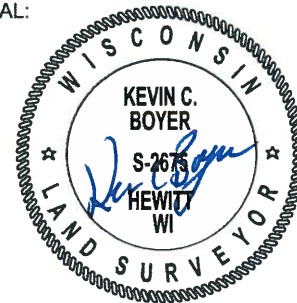
2020 - PLS 2675 FOUND SURVEY NAIL FLUSH WITH THE ROAD SURFACE AND 4 TIES. THE MONUMENT AGREES WITH ALL 4 TIES. ACCEPTED THE SURVEY NAIL AS THE CORNER LOCATION AND MEASURED TO THE EXISTING TIES.



LOCATION

(INDICATE CORNER BY "X")

SEAL:



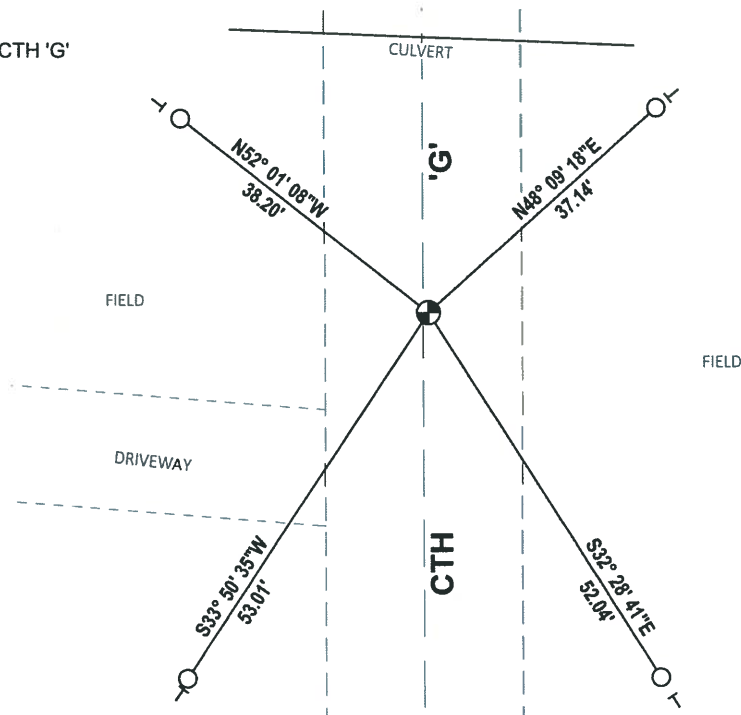
DATA SHOWN HERE ON THIS TIE SHEET IS CORRECT AND COMPLETE TO THE BEST OF MY KNOWLEDGE AND BELIEF.

PROFESSIONAL LAND SURVEYOR

DATE 3/25/2020

- TIE SKETCH

NOTE: THE CORNER LANDS 0.7± EAST OF CTH 'G' CENTERLINE.



- FOUND 3/4" IRON ROD
- ⊕ FOUND SURVEY NAIL MONUMENT
- VINYL "T" POST

