

13
SECTION

20
TOWN

07
RANGE

ADAMS COUNTY

COUNTY CORNER NO: 72

ROMPORTOL ID: 42007130020

PUBLIC LAND SURVEY MONUMENT RECORD

TYPE OF MONUMENT: HARRISON

ADAMS COUNTY COORDINATES, NAD 83 (2007)

N. 303808.958

E. 585969.483

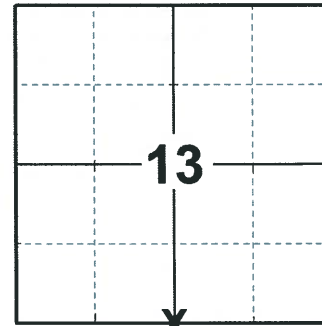
ELEVATION- DATUM

FIELD WORK DATE: 03/10/2020

BASIS FOR MONUMENT LOCATION

1973 - PLS 878 EXCAVATED DIRT ROAD WITH BACKHOE. FOUND CHARCOAL STAKE, MONUMENT SAME. TRAVERSE OF SECTION INDICATES LOCATION OK.

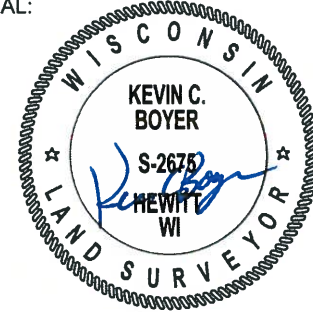
2020 - PLS 2675 FOUND HARRISON 12"± BELOW THE ROAD SURFACE AND 3 WITNESSES. THE MONUMENT AGREES WITH ALL 3 WITNESSES. ACCEPTED THE HARRISON AS THE CORNER LOCATION. SET 4 NEW TIES AND MEASURED TO THE EXISTING WITNESSES.



LOCATION

(INDICATE CORNER BY "X")

SEAL:



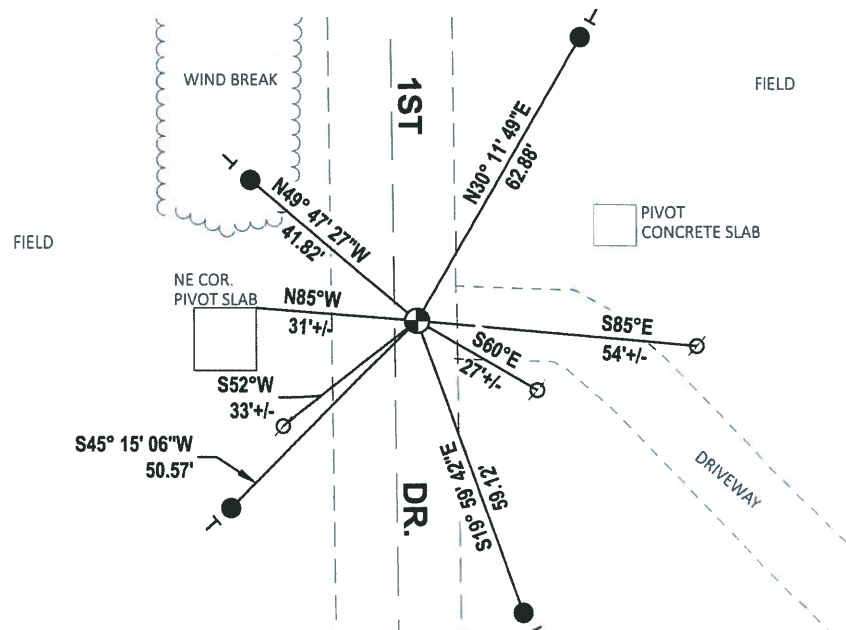
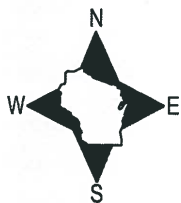
DATA SHOWN HERE ON THIS TIE SHEET IS CORRECT AND COMPLETE TO THE BEST OF MY KNOWLEDGE AND BELIEF.

PROFESSIONAL LAND SURVEYOR

DATE 3/25/2020

TIE SKETCH

NOTE: THE CORNER LANDS 4.1'± EAST OF 1ST DR. CENTERLINE.



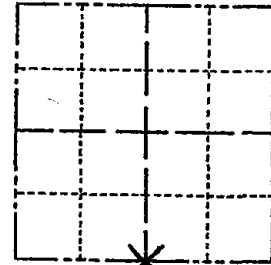
- SET 3/4" x 18" IRON REBAR, 1.50#/FT
- ⊕ FOUND HARRISON MONUMENT
- ⊙ WITNESS POWER POLE
- ┆ VINYL "T" POST

ADAMS COUNTY

Survey Monument Record

CORNER NO. 252
 SECTION 13
 TOWN 20
 RANGE 7

TYPE OF MONUMENT: 30° HARRISON
 STATE PLANE COORDINATES: N _____
 E _____
 ELEVATION — M.S.L. DATUM: _____
 THETA ANGLE: _____
 FIELD BOOK: 107 PAGE 99



LOCATION
(Indicated by 'X')

BASIS FOR MONUMENT LOCATION

(Use reverse side if necessary)

Show info such as: History of corner, with reference to Vol. and pg, dates, surveyor; exact description of monument replaced; if location computed, by taped or EDM traverse; landowner remarks, etc.

Excavated dirt road with backhoe.
 Found charcaol stake, monumented same.
 Traverse of section indicates location OK.

SEAL:



2 new 4-30-84 SS-DK

2-NEW TIES, 1-GONE 6-14-94, CR-JG
 OK, 2-22-99-JG
 " 7-2-99-SS
 " 2-6-09-SS

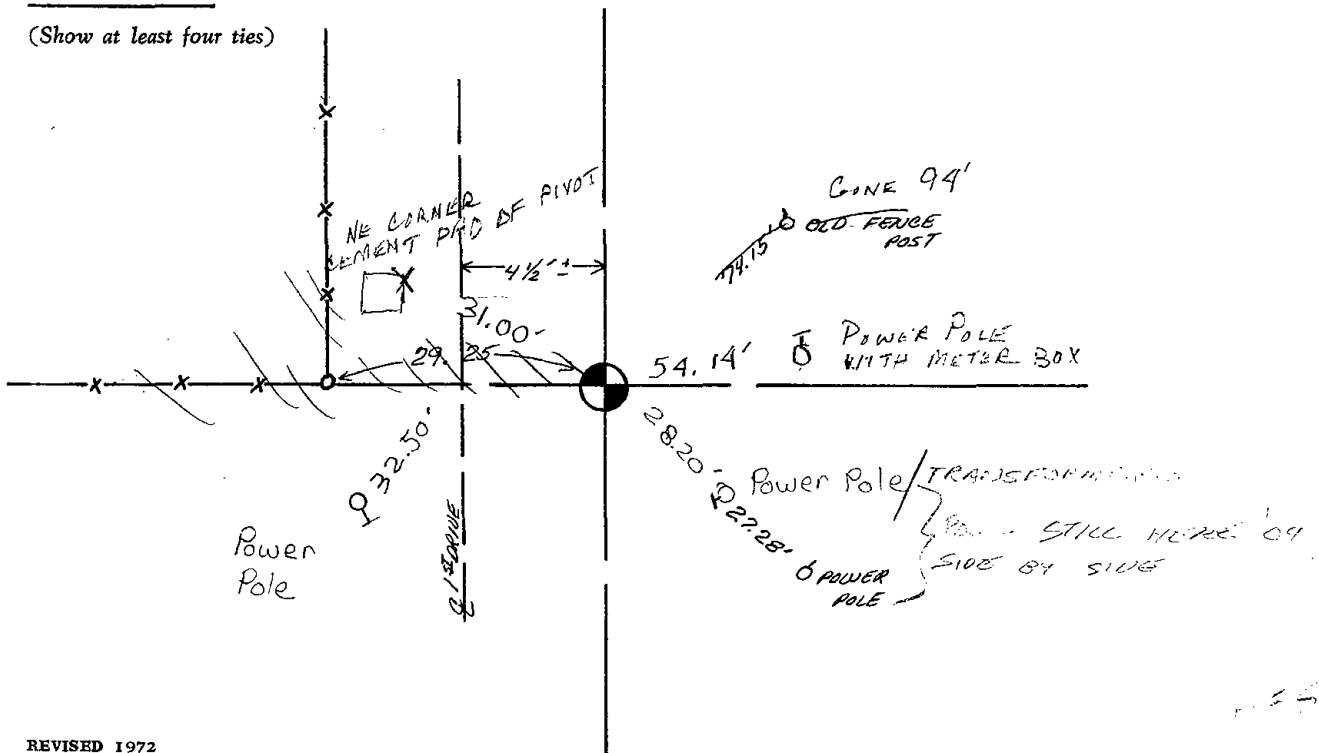
CERTIFIED CORRECT:

Anthony B. Kiedrowski
 Registered Land Surveyor

DATE: March 4 73

TIE SKETCH

(Show at least four ties)



•
•
•
•
•

•
•
•
•
•

•
•
•
•
•