

20
SECTION

20
TOWN

07
RANGE

ADAMS COUNTY

COUNTY CORNER NO: 76

ROMPORTOL ID: 42007202000

PUBLIC LAND SURVEY MONUMENT RECORD

TYPE OF MONUMENT: HARRISON
ADAMS COUNTY COORDINATES, NAD 83 (2007)

N. 301049.971

E. 567372.471

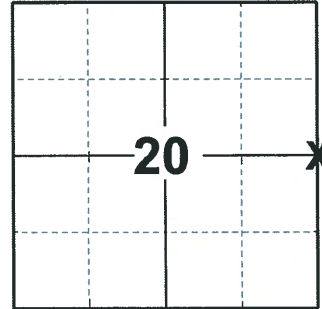
ELEVATION- - - - - DATUM - - - - -

FIELD WORK DATE: 03/05/2020

BASIS FOR MONUMENT LOCATION

1981 - PLS-878 NO RECORD OF ANY RESURVEYS. COULD FIND ABSOLUTELY NO EVIDENCE OF CORNER LOCATION. CORNER IS SET ON LINE EQUIDISTANT BETWEEN SECTION CORNERS

2020 - PLS 2675 FOUND HARRISON FLUSH WITH THE GROUND, 1 TIE AND 1 WITNESS. THE MONUMENT AGREES WITH THE FOUND TIE AND WITNESS. THE MONUMENT WAS ALSO VERIFIED TO BE ON A NEAR STRAIGHT LINE AND EQUIDISTANT BETWEEN THE NE AND SE CORNERS OF SECTION 20. ACCEPTED THE HARRISON AS THE CORNER LOCATION. SET 3 NEW TIES AND MEASURED TO THE EXISTING TIE AND WITNESS.



LOCATION

(INDICATE CORNER BY "X")

SEAL:

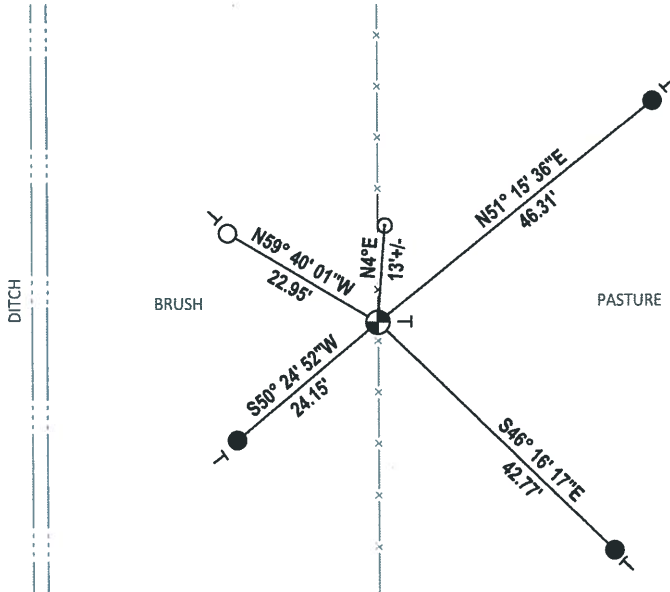


DATA SHOWN HERE ON THIS TIE SHEET IS CORRECT AND COMPLETE TO THE BEST OF MY KNOWLEDGE AND BELIEF.

PROFESSIONAL LAND SURVEYOR

DATE 3/25/2020

- TIE SKETCH -

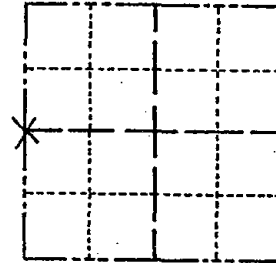


- SET 3/4" x 18" IRON REBAR, 1.50#/FT
- FOUND 3/4" IRON ROD
- ⊕ FOUND HARRISON MONUMENT
- VINYL "T" POST
- ⊙ WITNESS TREE
- ⊙ POST W/NAIL IN WEST SIDE

Government Land Corner Certificate

ADAMS County
 TYPE OF MONUMENT: HARRISON
 STATE PLANE COORDINATES: N _____
 E _____
 ELEVATION — M.S.L. DATUM: _____
 THETA ANGLE: _____
 FIELD BOOK: 88 PAGE 78
 DRAWN BY: L. COOMBS

CORNER NO. 76
 SECTION 21
 TOWN 20
 RANGE 7



LOCATION
(Indicated by 'X')

BASIS FOR MONUMENT LOCATION

Show info such as: History of corner, with reference to Vol. and pg., dates, surveyor; exact description of monument replaced; if location computed, by taped or EDM traverse; landowner remarks, etc. (Use reverse side if necessary)

No record of any resurveys. Could find absolutely no evidence of corner location. Corner is set on line equidistant between section corners.

Ok 4-25-84 DK-SS

SEAL:



DATA SHOWN HERE ON
CERTIFIED CORRECT:

Anthony B. Kiedrowski
Registered Land Surveyor

DATE: 11/4/81

TIE SKETCH

Show at least four ties, also fence lines, roads, topo, size and type of witness trees and if off road - best way to arrive at corner.

SET 3/4" ROD @ EAST
DITCH BANK, 21' WEST
of FENCE 22.9 TO
H/R

8" ELM / BT
W'sign
60.87'

10" POPAL / BT
SET 3/4" ROD 115' WEST
of FENCE 37.6 TO
HARRISON - 147' SOUTH
of OTHER ROAD 26.1'

NAIL IN WEST SIDE OF
NORTHERLY POST 12.2'

