

20
SECTION

20
TOWN

07
RANGE

ADAMS COUNTY

COUNTY CORNER NO: 85

ROMPORTOL ID: 42007200000

PUBLIC LAND SURVEY MONUMENT RECORD

TYPE OF MONUMENT: HARRISON

ADAMS COUNTY COORDINATES, NAD 83 (2007)

N. 298408.981

E. 567340.317

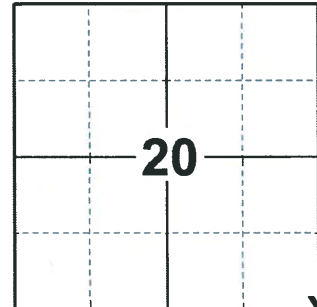
ELEVATION- DATUM

FIELD WORK DATE: 02/26/2020

BASIS FOR MONUMENT LOCATION

1976 - PLS 1103 RAN EDM/T2 TRAVERSE AROUND SECTIONS 28 AND 29, AND PORTIONS OF ADJOINING SECTIONS TO DETERMINE SEARCH AREAS. EXCAVATION WITH BACKHOE YIELDED NO EVIDENCE OF THE ORIGINAL CORNER OR ANY REMONUMENTATION. COULD FIND NO EVIDENCE OF BEARING TREES. RE-ESTABLISHED CORNER BY PRORATING BETWEEN THE NORTHWEST CORNER OF SECTION 29 AND THE NORTHEAST CORNER OF SECTION 28, AND BY DOUBLING OVER THE DISTANCE FROM THE SOUTHEAST CORNER OF SECTION 29 AND A VERY SUBSTANTIAL FENCE LINE AT THE EAST QUARTER CORNER OF SECTION 29. MATCHES ALL OCCUPATION. SET HARRISON MONUMENT OF 11-4-76.

2020 - PLS 2675 FOUND HARRISON 14"± BELOW THE ROAD AND 1 WITNESS. THE MONUMENT AGREES WITH THE WITNESS. ACCEPTED THE HARRISON AS THE CORNER LOCATION. SET 4 NEW TIES AND MEASURED TO THE EXISTING WITNESS.



LOCATION

(INDICATE CORNER BY "X")

SEAL:



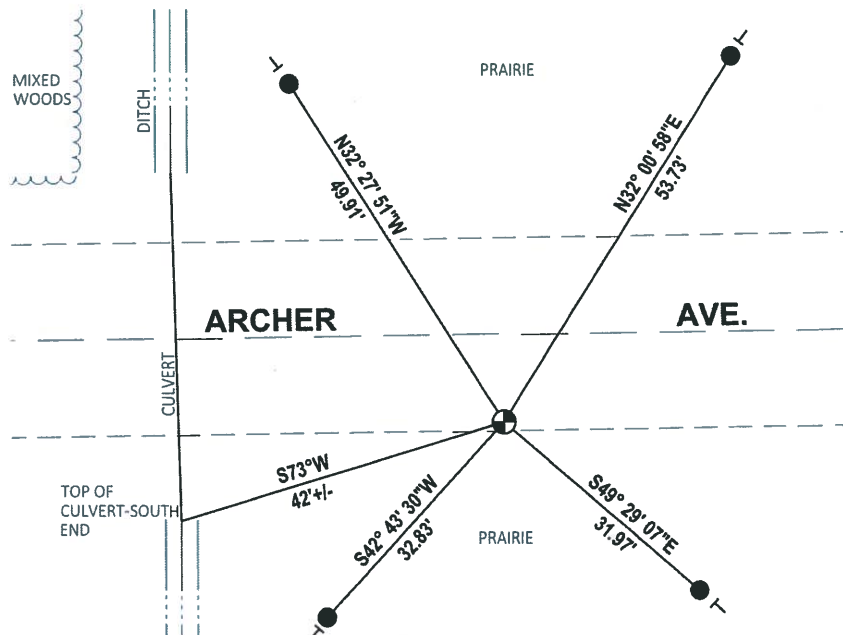
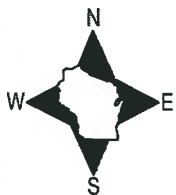
DATA SHOWN HERE ON THIS TIE SHEET IS CORRECT AND COMPLETE TO THE BEST OF MY KNOWLEDGE AND BELIEF.

PROFESSIONAL LAND SURVEYOR

DATE 3/25/2020

- TIE SKETCH

NOTE: THE CORNER LANDS 11.2'± SOUTH OF ARCHER AVE. CENTERLINE



- SET 3/4" x 18" IRON REBAR, 1.50#/FT
- ⊕ FOUND HARRISON MONUMENT
- ┆ VINYL "T" POST

ADAMS COUNTY

Survey Monument Record

TYPE OF MONUMENT: Standard Harrison

STATE PLANE COORDINATES: N _____

E _____

ELEVATION — M.S.L. DATUM: _____

THETA ANGLE: _____

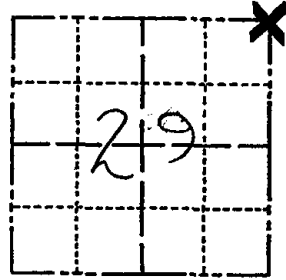
FIELD BOOK: 37 PAGE 67

CORNER NO. 85

SECTION 29

TOWN 20

RANGE 7



LOCATION
(Indicated by 'X')

SEAL:



BASIS FOR MONUMENT LOCATION

(Use reverse side if necessary)

Show info such as: History of corner, with reference to Vol. and pg, dates, surveyor; exact description of monument replaced; if location computed, by taped or EDM traverse; landowner remarks, etc.

Ran EDM/T2 traverse around Sections 28 and 29, and portions of adjoining sections to determine search areas.

Excavation with backhoe yielded no evidence of the original corner or any remonumentation. Could find no evidence of bearing trees.

Re-established corner by prorating between the Northwest corner of Section 29 and the Northeast corner of Section 28, and by doubling over the distance from the Southeast corner of Section 29 and a very substantial fenceline at the East Quarter corner of Section 29.

Matches all occupation.

Set Harrison monument of 11-4-76.

CERTIFIED CORRECT

Dale C. Hagen

Registered Land Surveyor

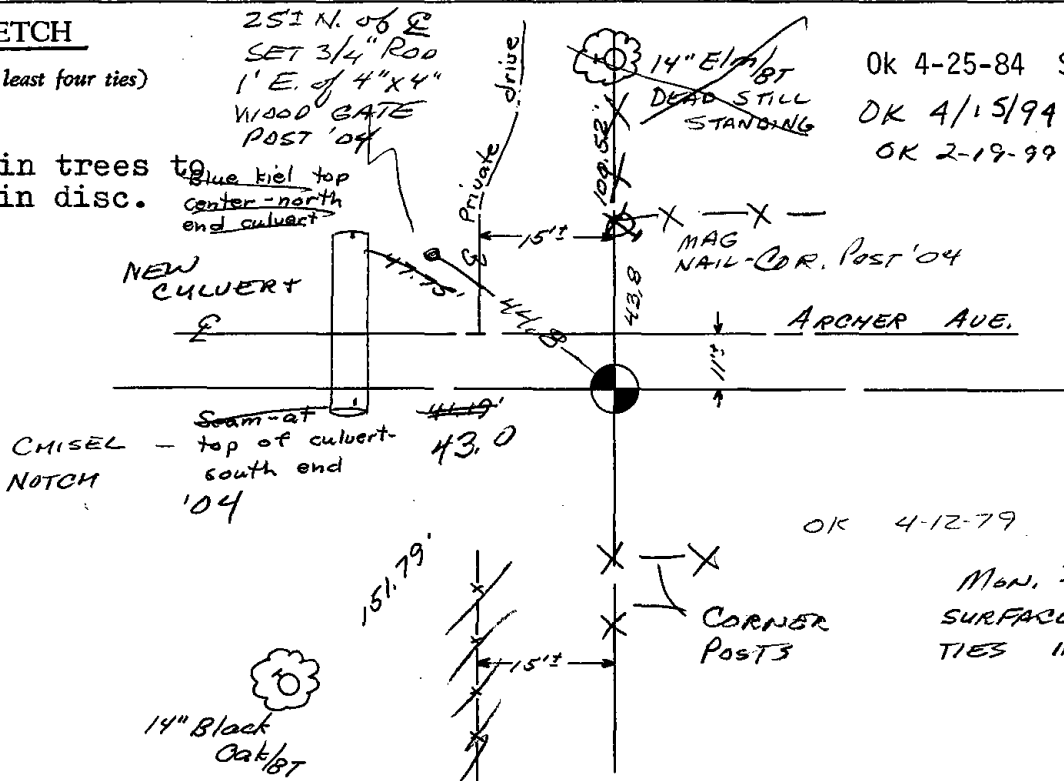
DATE: 12-2-76

TIE SKETCH

(Show at least four ties)

NOTE

Ties in trees to blue nail top center-north end culvert nail in disc.



OK 4-25-84 SS-DK

OK 4/15/94 JG-SS

OK 2-19-99 JG

OK 4-12-79 RN-SS

Mon. 14" BELOW SURFACE - 3 NEW TIES 11-10-04 SS