

21
SECTION

20
TOWN

07
RANGE

ADAMS COUNTY

COUNTY CORNER NO: 86

ROMPORTOL ID: 42007210020

PUBLIC LAND SURVEY MONUMENT RECORD

TYPE OF MONUMENT: 3/4"X48" REBAR

ADAMS COUNTY COORDINATES, NAD 83 (2007)

N. 298421.345

E. 569996.585

ELEVATION- - - - - DATUM - - - - -

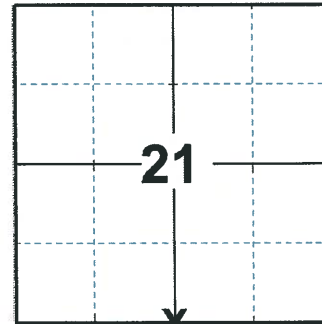
FIELD WORK DATE: 02/26/2020

BASIS FOR MONUMENT LOCATION

1976 - PLS 1103 RAN EDM/T2 TRAVERSE AROUND SECTIONS 28 AND 29, AND PORTIONS OF ADJOINING SECTIONS TO DETERMINE SEARCH AREA FOR INVESTIGATION. EXCAVATION WITH BACKHOE YIELDED NO EVIDENCE OF THE ORIGINAL CORNER OR ANY REMONUMENTATION. COULD FIND NO ORIGINAL BEARING TREES. RE-ESTABLISHED CORNER BY SINGLE PROPORTIONATE MEASURE ON LINE BETWEEN ADJACENT SECTION CORNERS.

1984 - PLS 1551 THE HARRISON MONUMENT AS SHOWN ON DALE HAGEN TIE SHEET, DATED 12/2/76 WAS FOUND. POSITION CHECKED WITH THAT SHOWN ON SECTION SUMMARY RECORD. CORNER WAS ACCEPTED AND RE-TIED AS SHOWN.

2020 - PLS 2675 FOUND NO EVIDENCE OF ANY CORNER MONUMENTATION, BUT FOUND 1 TIE AND 1 WITNESS. CALCULATED CORNER LOCATION FROM RECORDED DISTANCE FROM THE 1984 TIE SHEET. THIS CALCULATED LOCATION IS ON A NEAR STRAIGHT LINE AND EQUIDISTANT BETWEEN THE SE AND SW CORNERS OF SECTION 21. SET A 3/4"X48" REBAR FOR THE CORNER, SET 4 NEW TIES, MEASURED TO THE FOUND TIE AND WITNESS.



LOCATION

(INDICATE CORNER BY "X")

SEAL:



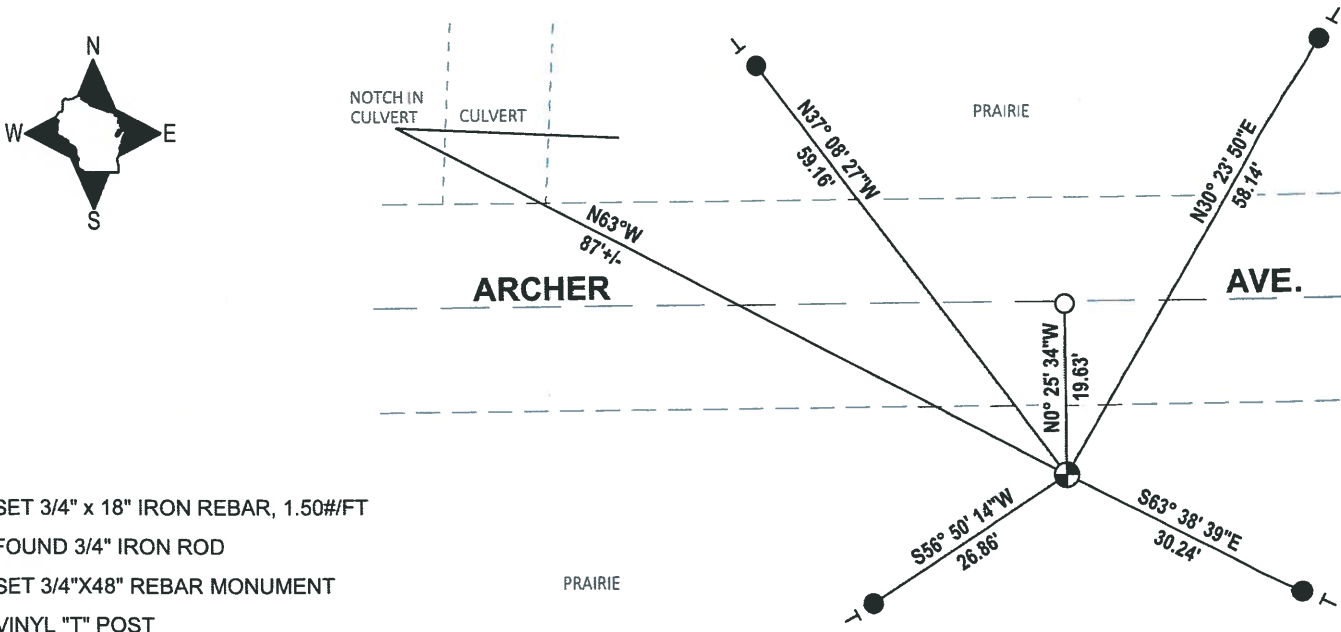
DATA SHOWN HERE ON THIS TIE SHEET IS CORRECT AND COMPLETE TO THE BEST OF MY KNOWLEDGE AND BELIEF.

PROFESSIONAL LAND SURVEYOR

DATE 3/25/2020

- TIE SKETCH

NOTE: THE CORNER LANDS 19.8'± SOUTH OF ARCHER AVE. CENTERLINE



- SET 3/4" x 18" IRON REBAR, 1.50#/FT
- FOUND 3/4" IRON ROD
- ⊕ SET 3/4"X48" REBAR MONUMENT
- ┆ VINYL "T" POST

ADAMS COUNTY

Survey Monument Record

TYPE OF MONUMENT: 30" HARRISON

STATE PLANE COORDINATES: N _____

E _____

ELEVATION — M.S.L. DATUM: _____

THETA ANGLE: _____

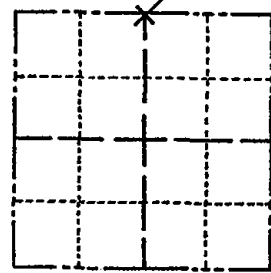
FIELD BOOK: File PAGE _____

CORNER NO. 86

SECTION 28

TOWN 20

RANGE 7



LOCATION
(Indicated by 'X')

SEAL:



BASIS FOR MONUMENT LOCATION

(Use reverse side if necessary)

Show info such as: History of corner, with reference to Vol. and pg, dates, surveyor; exact description of monument replaced; if location computed, by taped or EDM traverse; landowner remarks, etc.

Ran EDM/T2 traverse around sections 28 and 29, and portions of adjoining sections to determine search area for investigation.

Excavation with backhoe yielded no evidence of the original corner or any remonumentation. Could find no original bearing trees.

Re-established corner by single proportionate measure on line between adjacent section corners.

Set 11-4-76.

OK 4-13-79 AN-SS

CERTIFIED CORRECT

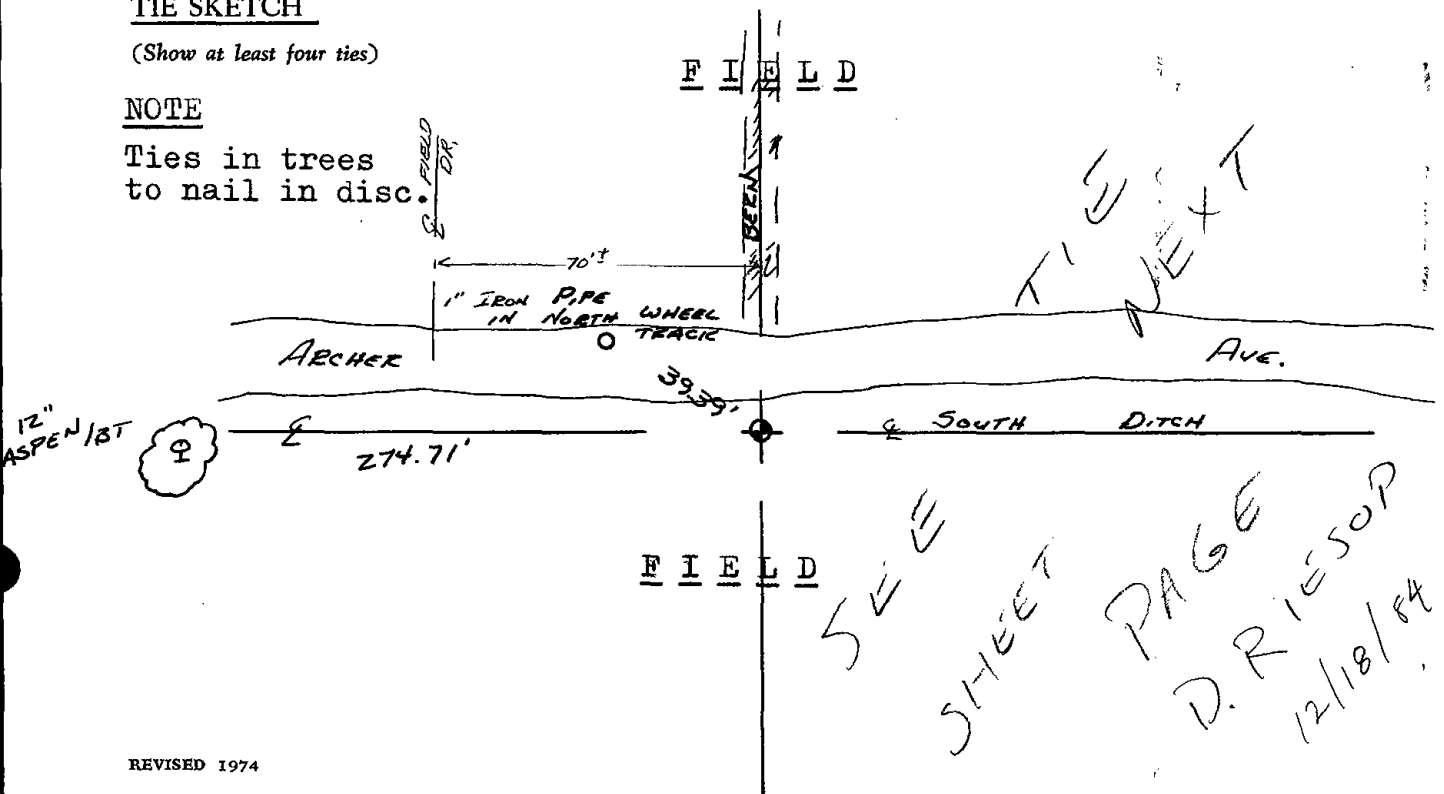
Dale C Hagen
Registered Land Surveyor
DATE: 12-2-76

TIE SKETCH

(Show at least four ties)

NOTE

Ties in trees to nail in disc.



SEE SHEET PAGE D. RIESOP 12/18/84

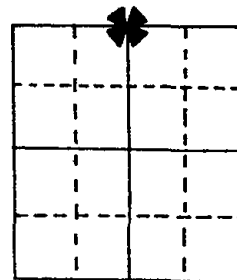
U.S. PUBLIC LAND SURVEY MONUMENT RECORD

Note: This form is intended and designed to fulfill all requirements of Wisconsin Administrative Code, Chapter A-E 5.02, U.S. Public Land Survey Monument Record (3) (a) (b) (c) (d) (e) (f) (g) (h) (i). An additional sheet may be added if necessary to conform with said requirements.

(a) Corner location: Township 20 North
Range 7 East/West

Town/City/Village LEOLA

County ADAMS



Section 28

(b) (f) (g) (h) Description of monument found at this corner and if it was accepted, state all evidence (material, testimonial, occupational, plats, records, other monuments) used as a basis for accepting. If not accepted or if nothing was found, state evidence used as basis for establishing location. If reestablished through lost corner proportionate methods, indicate all monuments, distances and directions used to establish.

The Harrison monument as shown on Dale Hagen tie sheet, dated 12/2/76 was found. Position checked with that shown on section summary record.

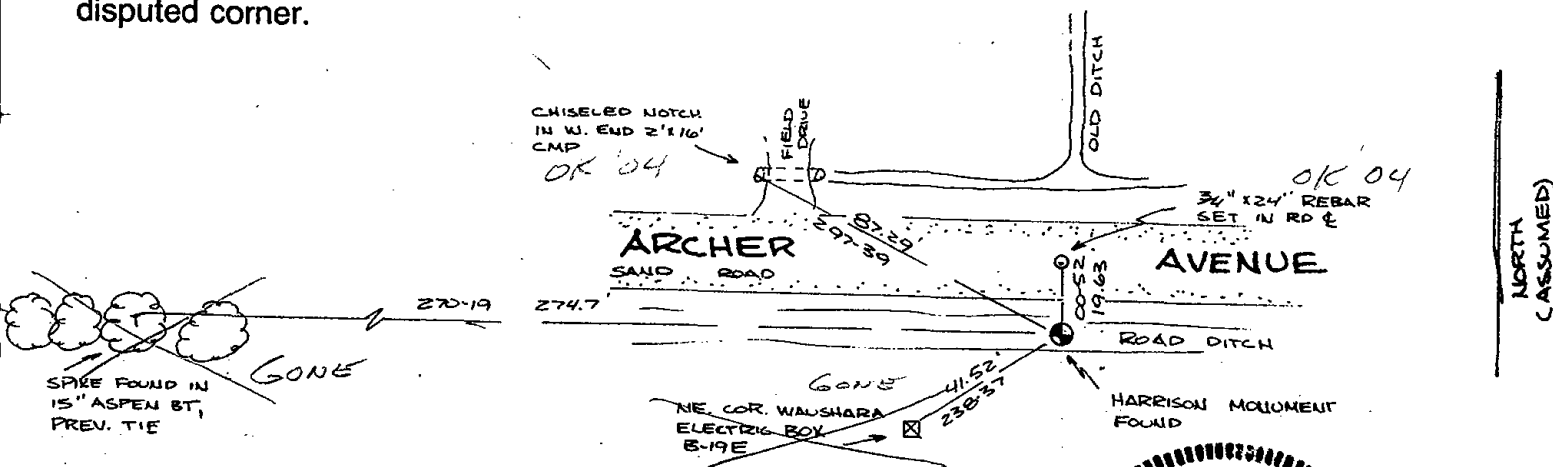
Corner was accepted and re-tied as shown

OK 4/15/94 JG-55

OK 2-19-99-JG

DITCH FULL OF WATER - ONLY 2 TIES REMAIN 11-10-04 SJS

(c) (d) (e) Plan view of corner with ties to at least 4 witness monuments. If in disagreement with previously established corner, show the distances between the two corners and also indicate the ties to the disputed corner.



(i) I, DAVID C. RIESOP S-1551
(type or print name) certify that the corner location on this record was determined by me or under my direction and control and that this U.S. Public Land Survey Monument Record is correct and complete to the best of my knowledge and belief. TIES ON 11/27/04

David C. Riesop Signature
12/18/04 Date



