

PUBLIC LAND SURVEY MONUMENT RECORD

TYPE OF MONUMENT: HARRISON
 ADAMS COUNTY COORDINATES, NAD 83 (2007)

N. 298590.909

E. 588622.177

ELEVATION- --- DATUM ---

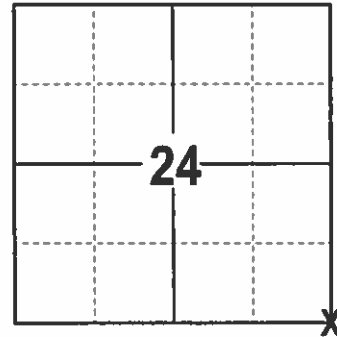
FIELD WORK DATE: 12/27/2016

BASIS FOR MONUMENT LOCATION

1978 - PLS 1118 EXCAVATED AND FOUND A 6"x8"x18" SANDSTONE ONE FOOT BELOW THE ROAD SURFACE. RESET THE MONUMENT DEEPER AND PLACED A HARRISON OVER THE TOP.

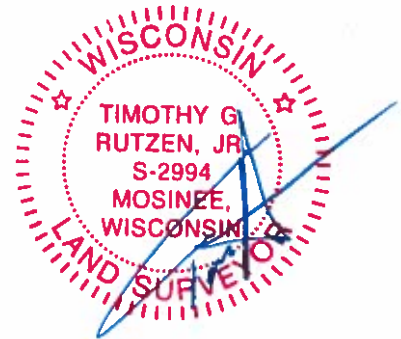
1991 - PLS 1118 FOUND HARRISON AND TIES.

2017 - PLS 2994 FOUND EXISTING HARRISON 6 INCHES BELOW THE ROAD SURFACE AND 2 EXISTING TIES. THE HARRISON AGREES WITH EXISTING TIES. ACCEPTED HARRISON AND SET 2 NEW TIES.



LOCATION
 (INDICATE CORNER BY "X")

SEAL:



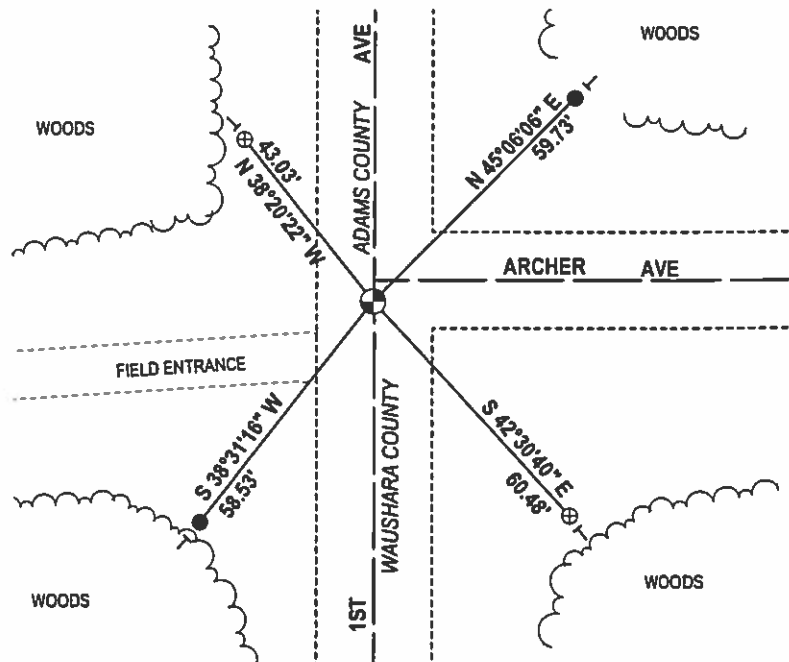
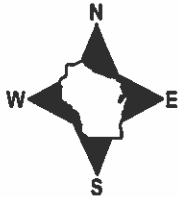
DATA SHOWN HERE ON THIS TIE SHEET IS CORRECT AND COMPLETE TO THE BEST OF MY KNOWLEDGE AND BELIEF.

PROFESSIONAL LAND SURVEYOR

DATE 2/9/17

- TIE SKETCH

NOTE: THE CORNER FALLS 4± SOUTH OF ARCHER AVE.

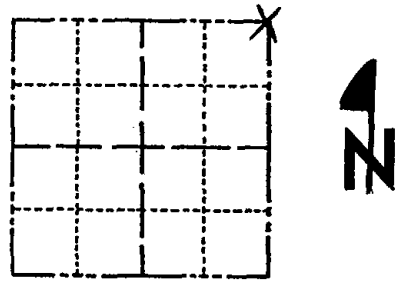


- 3/4" X 18" IRON REBAR SET, 1.50#/FT
- ⊕ 2" OD IRON PIPE WITH CAP FOUND
- ⊙ HARRISON FOUND
- VINYL "T" POST

Government Land Corner Certificate

Adams - Waushara County
 TYPE OF MONUMENT: H.M.
 STATE PLANE COORDINATES: N _____
 E _____
 ELEVATION — M.S.L. DATUM: _____
 THETA ANGLE: _____
 FIELD BOOK: W-4 PAGE 78
 DRAWN BY: Gary Schindler

CORNER NO. 93
 SECTION 25
 TOWN 20
 RANGE 7



LOCATION
(Indicated by 'X')

BASIS FOR MONUMENT LOCATION

Show info such as: History of corner, with reference to Vol. and pg., dates, surveyor; exact description of monument replaced; if location computed, by taped or EDM traverse; landowner remarks, etc. (Use reverse side if necessary)

Dog and found a 6" x 8" x 18" sandstone monument 1' under road surface. reset the monument deeper with H.M. over it.

Ok 4-30-84 SS-DK

SEAL:



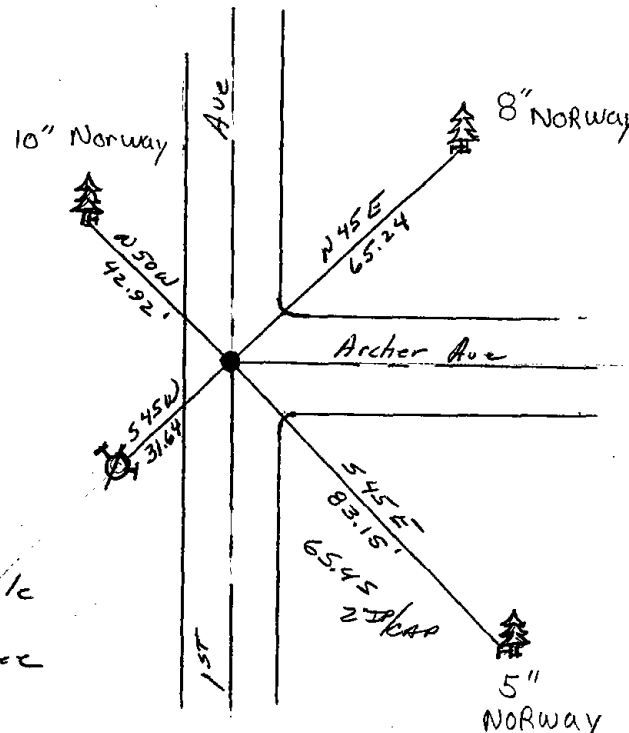
DATA SHOWN HERE ON
CERTIFIED CORRECT:

Gary E. Schindler
Registered Land Surveyor

DATE: 7-11-78

TIE SKETCH

Show at least four ties, also fence lines, roads, topo, size and type of witness trees' and if off road - best way to arrive at corner.



MAINTENANCE RECORD

Date	Init.	Remarks
3-19-79	DW-RN	OK
2 MARCH 79	CR-SS	OK
2-12-99	JG	OK
7-6-04	SS	OK - SEE <u>ADJUTANT WAUSH. Co. 10-23-71</u>
2-6-09	SS	" "

Legend

- = H.M.
- ⊙ = Power Pole
- 🌲 = Pine Tree

STATE OF WISCONSIN)
WAUSHARA COUNTY) SS

I, GARY E. Schindler, do hereby certify that on the 11th day of April, 1990, I found (evidence) (no evidence) of the N.W. corner of Sec. 30, T20 N, R 8 E, Fourth Principal Meridian, and I re-established said corner according to the Wisconsin Statutes as shown and described hereon.

Dated this 25th day of October, 1991
G. E. Schindler
Waushara County Surveyor

WAUSHARA COUNTY
CERTIFIED LAND CORNER

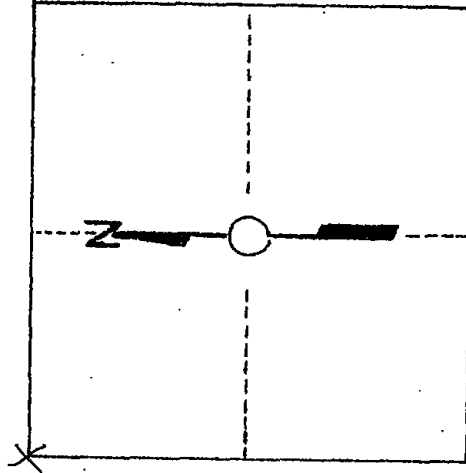
Description of corner evidence found:

Found Harrison and ties as
Set by Dowanthon D. Palmer
dated July 13, 1978.

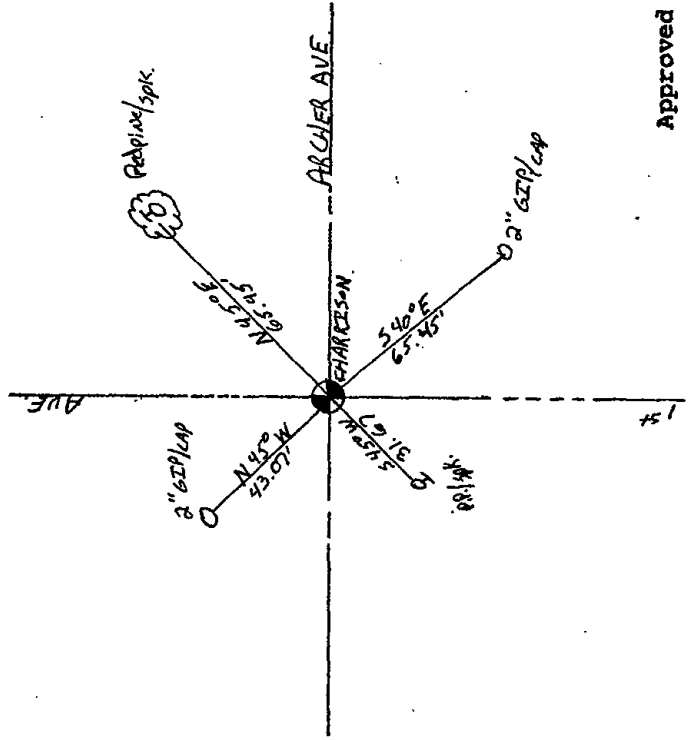
No. 93
Witnesses to corner location:

AL Knight
DAN Entinger

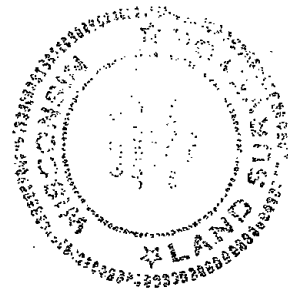
Section 30



T. 20 N R 8 E
WISCONSIN



Procedure: Set ties as indicated.



Approved By: _____