

30  
SECTION

20  
TOWN

07  
RANGE

# ADAMS COUNTY

COUNTY CORNER NO: 95  
ROMPORTOL ID: 42007302000

## PUBLIC LAND SURVEY MONUMENT RECORD

TYPE OF MONUMENT: HARRISON  
ADAMS COUNTY COORDINATES, NAD 83 (2007)

N. 295736.732

E. 562050.138

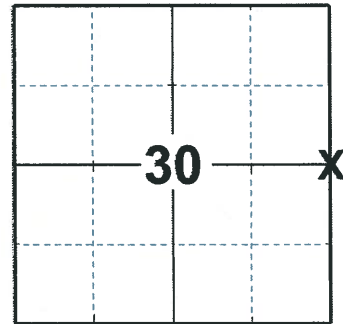
ELEVATION- - - - - DATUM - - - - -

FIELD WORK DATE: 03/05/2020

### BASIS FOR MONUMENT LOCATION

1976 - PLS 1103 RAN EDM/T2 TRAVERSE AROUND SECTIONS 28 AND 29, AND PORTIONS OF ADJOINING SECTIONS TO DETERMINE SEARCH AREAS. COULD FIND NO EVIDENCE OF THE ORIGINAL CORNER OR AND REMONUMENTATION. COULD FIND NO ORIGINAL BEARING TREES. RE-ESTABLISHED CORNER BY SINGLE PROPORTIONATE MEASURE ON LINE BETWEEN ADJACENT SECTION CORNERS. SET HARRISON MONUMENT ON 11-4-76.

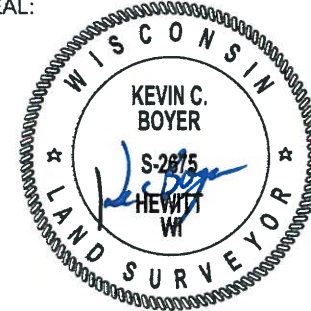
2020 - PLS 2675 FOUND HARRISON 4"± ABOVE THE GROUND AND 1 WITNESS. THE MONUMENT AGREES WITH THE WITNESS. ACCEPTED THE HARRISON AS THE CORNER LOCATION. SET 4 NEW TIES AND MEASURED TO THE EXISTING WITNESS.



### LOCATION

(INDICATE CORNER BY "X")

SEAL:

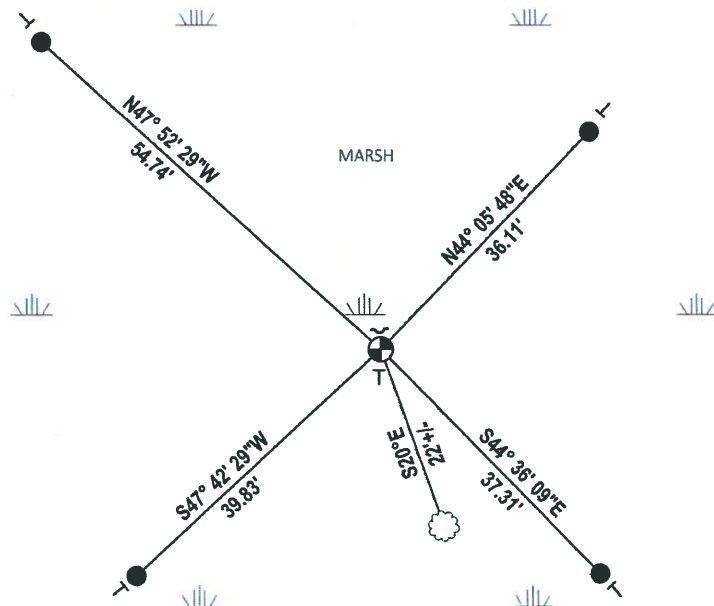


DATA SHOWN HERE ON THIS TIE SHEET IS CORRECT AND COMPLETE TO THE BEST OF MY KNOWLEDGE AND BELIEF.

PROFESSIONAL LAND SURVEYOR

DATE 3/25/2020

### - TIE SKETCH



- SET 3/4" x 18" IRON REBAR, 1.50#/FT
- ⊙ FOUND HARRISON MONUMENT
- ✓ STEEL FENCE POST
- ┌ VINYL "T" POST
- ⊗ WITNESS TREE

ADAMS COUNTY

Survey Monument Record

TYPE OF MONUMENT: Standard Harrison

STATE PLANE COORDINATES: N \_\_\_\_\_

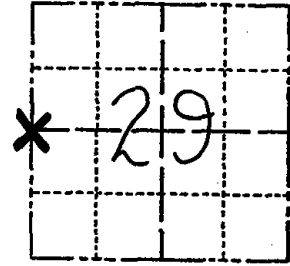
E \_\_\_\_\_

ELEVATION — M.S.L. DATUM: \_\_\_\_\_

THETA ANGLE: \_\_\_\_\_

FIELD BOOK: 37 PAGE 68

CORNER NO. 95  
SECTION 29  
TOWN 20  
RANGE 7



LOCATION  
(Indicated by 'X')

SEAL:

BASIS FOR MONUMENT LOCATION

(Use reverse side if necessary)

Show info such as: History of corner, with reference to Vol. and pg, dates, surveyor; exact description of monument replaced; if location computed, by taped or EDM traverse; landowner remarks, etc.

Ran EDM/T2 traverse around Sections 28 and 29, and portions of adjoining sections to determine search areas.

Could find no evidence of the original corner or and remonumentation. Could find no original bearing trees.

Re-established corner by single proportionate measure on line between adjacent section corners.

Set Harrison monument on 11-4-76.



OK 11-3-79 BS-SS

OK 4-20-84 SS-DK

2-GONE, 3-NEW TIES 6-16-94 BS-JG

CERTIFIED CORRECT  
*Dale C Hagen*  
Registered Land Surveyor  
DATE: 12-2-76

TIE SKETCH

OK 2-19-99-JG  
2 NEW TIES 11-10-04 SS

(Show at least four ties)

NOTE

Ties in trees to nail in disc.

