

29
SECTION

20
TOWN

07
RANGE

ADAMS COUNTY

COUNTY CORNER NO: 96

ROMPORTOL ID: 42007292000

PUBLIC LAND SURVEY MONUMENT RECORD

TYPE OF MONUMENT: HARRISON
ADAMS COUNTY COORDINATES, NAD 83 (2007)

N. 295766.774

E. 567378.972

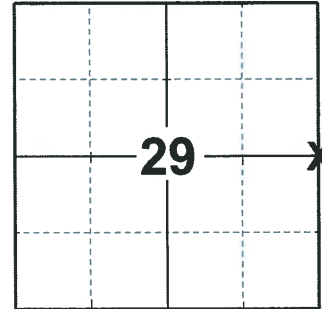
ELEVATION- DATUM

FIELD WORK DATE: 03/05/2020

BASIS FOR MONUMENT LOCATION

1976 - PLS 1103 RAN EDM/T2 TRAVERSE AROUND SECTIONS 28 AND 29, AND PORTIONS OF ADJOINING SECTIONS TO DETERMINE SEARCH AREAS FOR INVESTIGATION. COULD FIND NO EVIDENCE OF THE ORIGINAL CORNER OR ANY REMONUMENTATION. COULD FIND NO ORIGINAL BEARING TREES. SET CORNER BY SINGLE PROPORTIONATE MEASURE AND ON LINE BETWEEN ADJACENT SECTION CORNERS. SET HARRISON MONUMENT OF 11-4-76.

2020 - PLS 2675 FOUND HARRISON FLUSH WITH THE GROUND AND 1 WITNESS. THE MONUMENT AGREES WITH THE WITNESS AND VERIFIED THAT IT IS ON A NEAR STRAIGHT LINE AND EQUIDISTANT BETWEEN THE NE AND SE CORNERS OF SECTION 29. ACCEPTED THE HARRISON AS THE CORNER LOCATION. SET 4 NEW TIES AND MEASURED TO THE EXISTING WITNESS.



LOCATION
(INDICATE CORNER BY "X")

SEAL:

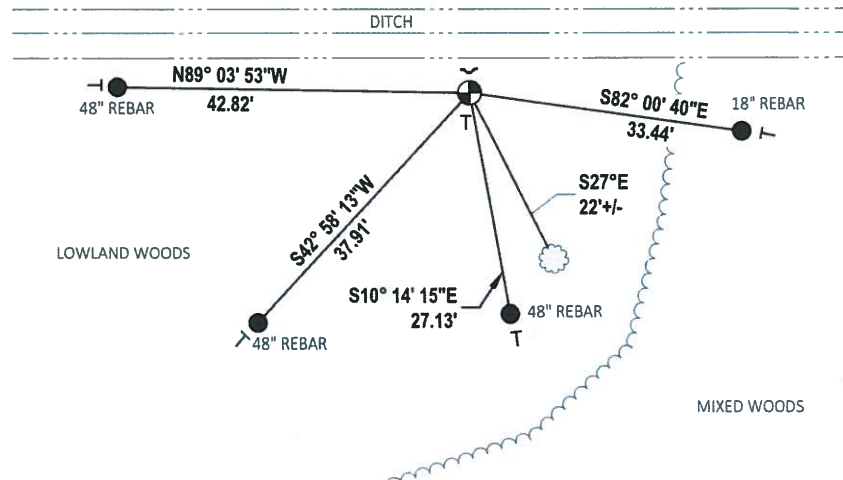


DATA SHOWN HERE ON THIS TIE SHEET IS CORRECT AND COMPLETE TO THE BEST OF MY KNOWLEDGE AND BELIEF.

PROFESSIONAL LAND SURVEYOR

DATE 3/25/2020

TIE SKETCH



- SET 3/4" x 18" OR 48" IRON REBAR, 0.50#/FT
- ⊕ FOUND HARRISON MONUMENT
- ✓ STEEL FENCE POST
- └ VINYL "T" POST
- ☁ WITNESS TREE

ADAMS COUNTY

Survey Monument Record

TYPE OF MONUMENT: Standard Harrison

STATE PLANE COORDINATES: N _____

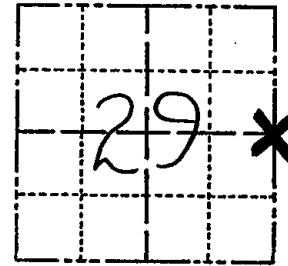
E _____

ELEVATION — M.S.L. DATUM: _____

THETA ANGLE: _____

FIELD BOOK: 37 PAGE 67

CORNER NO. 96
SECTION 29
TOWN 20
RANGE 7



LOCATION
(Indicated by 'X')

BASIS FOR MONUMENT LOCATION

(Use reverse side if necessary)

Show info such as: History of corner, with reference to Vol. and pg, dates, surveyor; exact description of monument replaced; if location computed, by taped or EDM traverse; landowner remarks, etc.

SEAL:



Ran EDM/T2 traverse around Sections 28 and 29, and portions of adjoining sections to determine search areas for investigation.

Could find no evidence of the original corner or any remonumentation. Could find no original bearing trees.

Set corner by single proportionate measure and on line between adjacent section corners.

Set Harrison monument of 11-4-76.

OK 03-02-09 SS

OK - 7 NEW TIE - 8-26-04 SS

OK 4-12-79 RN-SS

1 gone no new 4-25-84 SS-DK

All OK 6/16/94 JB-B5

OK 2-19-99 JG

CERTIFIED CORRECT:

Dale C. Hagen
Registered Land Surveyor

DATE: 12-2-76.

TIE SKETCH

(Show at least four ties)

NOTE

Ties in trees to nail in disc.

