

PUBLIC LAND SURVEY MONUMENT RECORD

TYPE OF MONUMENT: HARRISON
 ADAMS COUNTY COORDINATES, NAD 83 (2007)

N. 295803.521

E. 577988.210

ELEVATION- - - - DATUM - - - -

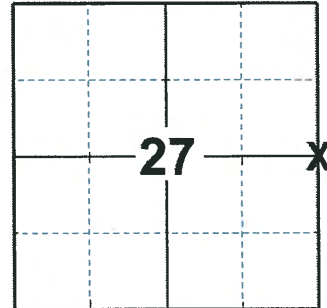
FIELD WORK DATE: 02/19/2020

BASIS FOR MONUMENT LOCATION

1979 - PLS 1167 FOUND 4"x5"x13" SANDSTONE, LOWERED STONE, AND PLACED HARRISON DIRECTLY OVER STONE AT ROAD SURFACE ELEVATION.

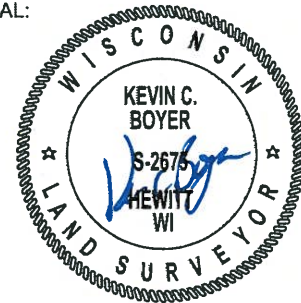
1991 - PLS 1821 FOUND MONUMENT CERTIFIED BY WAYNE BASLER R.L.S. #1167 DATED MAY 23, 1979. RETIED MONUMENT.

2020 - PLS 2675 FOUND HARRISON 2"± BELOW THE ROAD SURFACE AND 1 WITNESS. THE MONUMENT AGREES WITH THE WITNESS. ACCEPTED THE HARRISON AS THE CORNER LOCATION. SET 4 NEW TIES AND MEASURED TO A FOUND PROPERTY IRON AND THE EXISTING WITNESS.



LOCATION
 (INDICATE CORNER BY "X")

SEAL:



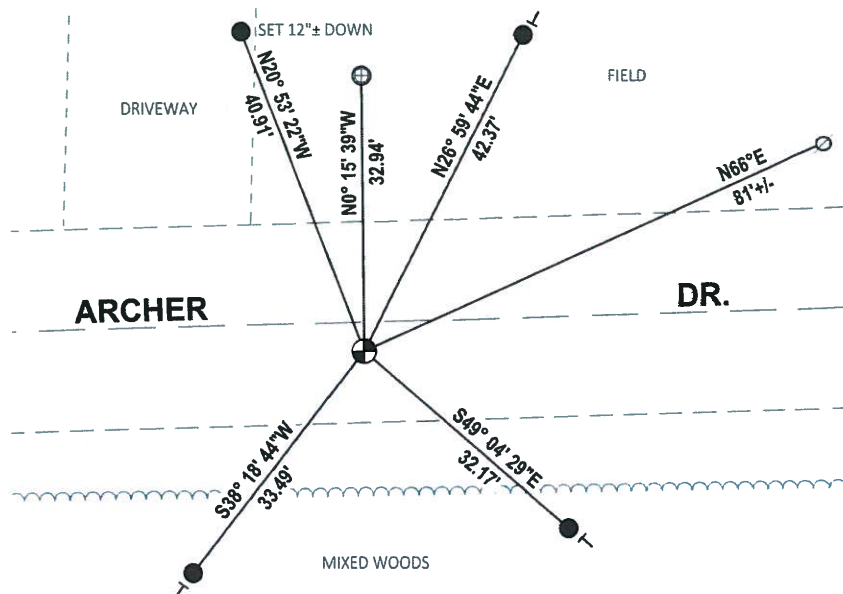
DATA SHOWN HERE ON THIS TIE SHEET IS CORRECT AND COMPLETE TO THE BEST OF MY KNOWLEDGE AND BELIEF.

PROFESSIONAL LAND SURVEYOR

DATE 3/25/2020

- TIE SKETCH

NOTE: THE CORNER LANDS 3.7'± SOUTH OF ARCHER DR. CENTERLINE

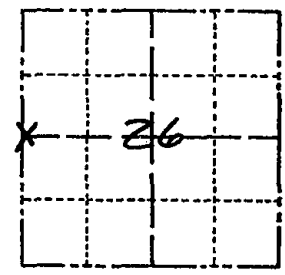


- SET 3/4" x 18" IRON REBAR, 1.50#/FT
- ⊕ FOUND 1" O.D. IRON PIPE
- ⊕ FOUND HARRISON MONUMENT
- ⊙ WITNESS POWER POLE
- └ VINYL "T" POST

Government Land Corner Certificate

Adams County
 TYPE OF MONUMENT: Harrison
 STATE PLANE COORDINATES: N _____
 E _____
 ELEVATION — M.S.L. DATUM: _____
 THETA ANGLE: _____
 FIELD BOOK: L.L. PAGE _____
 DRAWN BY: Basler

CORNER NO. 98
 SECTION 26
 TOWN 20
 RANGE 7E



LOCATION
(Indicated by 'X')

BASIS FOR MONUMENT LOCATION

Show info such as: History of corner, with reference to Vol. and pg., dates, surveyor; exact description of monument replaced; if location computed, by taped or EDM traverse; landowner remarks, etc. (Use reverse side if necessary)

Found 4"x5"x13" sandstone, lowered stone and placed Harrison directly over same at road surface elevation.

Ok 5-4-84 DK-SS

SEAL:



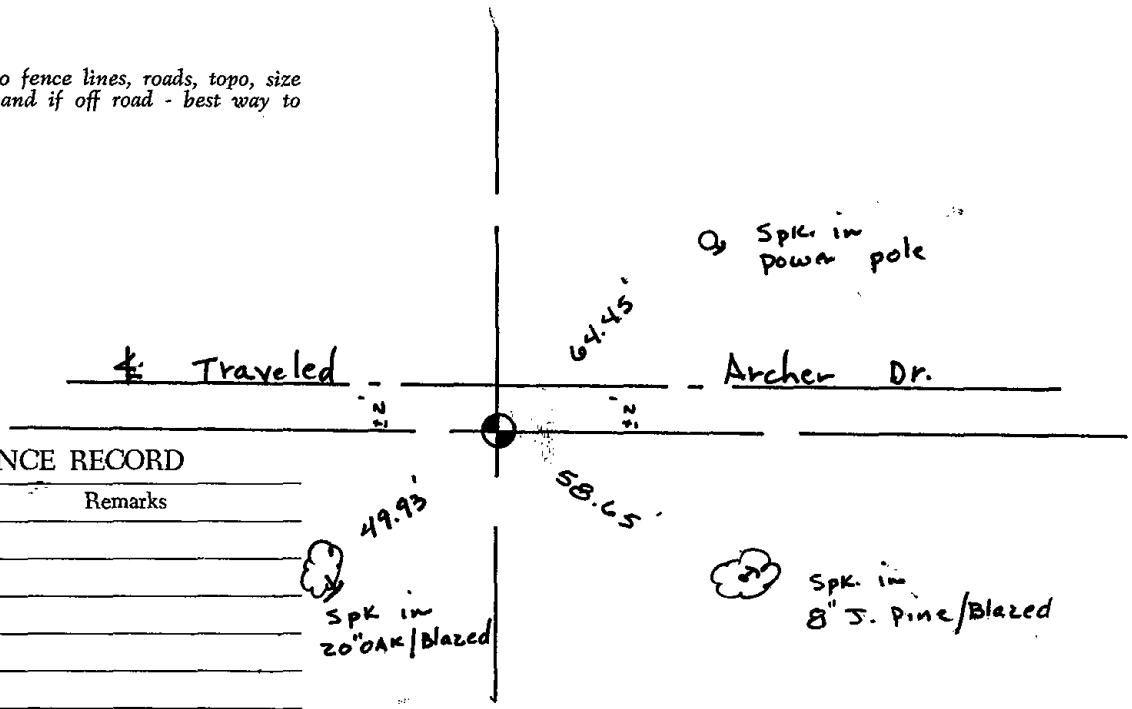
DATA SHOWN HERE ON
CERTIFIED CORRECT:

Wayne Basler
Registered Land Surveyor

DATE: 5-23-79

TIE SKETCH

Show at least four ties, also fence lines, roads, topo, size and type of witness trees' and if off road - best way to arrive at corner.



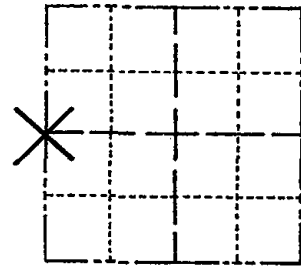
MAINTENANCE RECORD

Date	Init.	Remarks

Government Land Corner Certificate

ADAMS County
 TYPE OF MONUMENT: Harrison
 STATE PLANE COORDINATES: N _____
 E _____
 ELEVATION — M.S.L. DATUM: _____
 THETA ANGLE: _____
 FIELD BOOK: _____ PAGE _____
 DRAWN BY: Vissers

CORNER NO. 98
 SECTION 26
 TOWN 20N
 RANGE 7 E



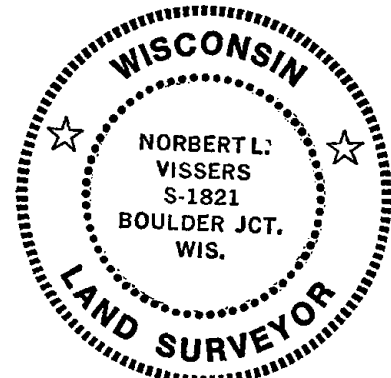
LOCATION
 (Indicated by 'X')

BASIS FOR MONUMENT LOCATION

Show info such as: History of corner, with reference to Vol. and pg., dates, surveyor; exact description of monument replaced; if location computed, by taped or EDM traverse; landowner remarks, etc. (Use reverse side if necessary)

Found Monument Certified By Wayne Basler
R.L.S. #1167 Dated May 23, 1979.
Retied Monument as shown below.

SEAL:



DATA SHOWN HERE ON
 CERTIFIED CORRECT:

Norbert L. Vissers
 Registered Land Surveyor

DATE: Jan. 17, 1991

TIE SKETCH

Show at least four ties, also fence lines, roads, topo, size and type of witness trees and if off road - best way to arrive at corner.

