

26
SECTION

20
TOWN

07
RANGE

ADAMS COUNTY

COUNTY CORNER NO: 99

ROMPORTOL ID: 42007262000

PUBLIC LAND SURVEY MONUMENT RECORD

TYPE OF MONUMENT: SURVEY NAIL
ADAMS COUNTY COORDINATES, NAD 83 (2007)

N. 295901.145

E. 583324.212

ELEVATION- - - - - DATUM - - - - -

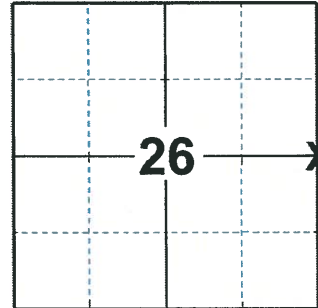
FIELD WORK DATE: 02/27/2020

BASIS FOR MONUMENT LOCATION

1978 - PLS 1118 DUG AND FOIUND A FRACTED SANDSTONE 5"X5"X12" 12" UNDER ROAD SURFACE. PLACED SECTIONS OF STONE AT BASE OF HARRISON MONUMENT.

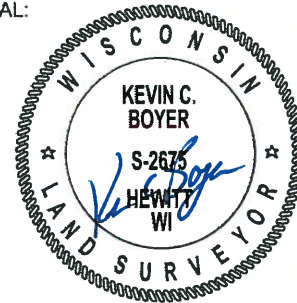
2015 - PLS 1478 FOUND HARRISON 5/28/14 AND LEFT IN PLACE BEFORE ROAD CONSTRUCTION. SET RODS AS NEW TIES.

2020 - PLS 2675 FOUND PK NAIL IN THE ROAD SURFACE AND 4 TIES. REMOVED THE PK NAIL AND FOUND NO ADDITIONAL MONUMENTATION. BELOW THE PK NAIL LOCATION AGREES WITH ALL 4 TIES. ACCEPTED THE PK NAIL AS THE CORNER LOCATION. SET A SURVEY NAIL IN THE PK LOCATION AND MEASURED TO THE FOUND TIES.



LOCATION
(INDICATE CORNER BY "X")

SEAL:



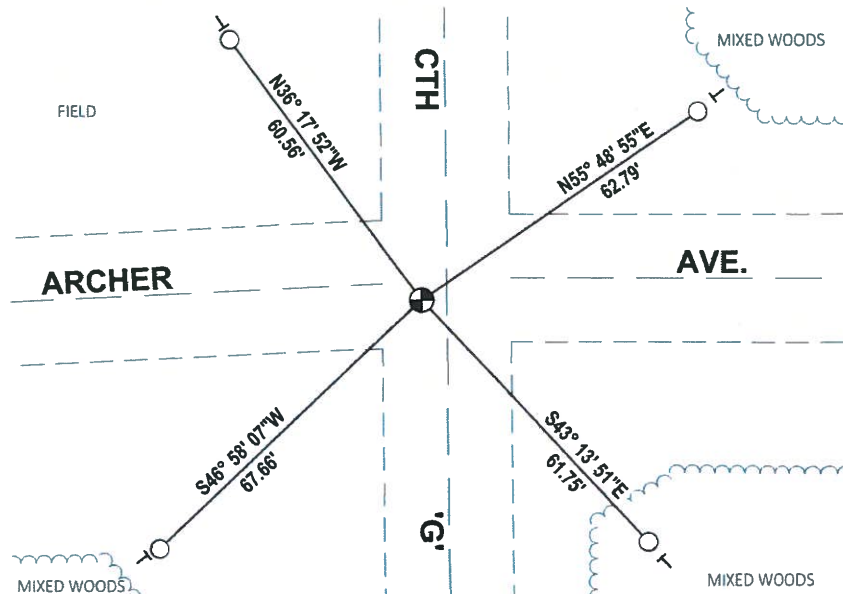
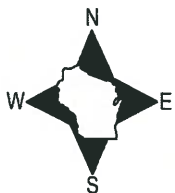
DATA SHOWN HERE ON THIS TIE SHEET IS CORRECT AND COMPLETE TO THE BEST OF MY KNOWLEDGE AND BELIEF.

PROFESSIONAL LAND SURVEYOR

DATE 3/25/2020

- TIE SKETCH

NOTE: THE CORNER LANDS 4.7'± WEST OF CTH 'G' CENTERLINE AND 4.1'± SOUTH OF ARCHER AVE. CENTERLINE



- FOUND 3/4" IRON ROD
- ⊕ SET SURVEY NAIL MONUMENT
- VINYL "T" POST

