

30  
SECTION

20  
TOWN

07  
RANGE

# ADAMS COUNTY

COUNTY CORNER NO: 102

ROMPORTOL ID: 42007300020

## PUBLIC LAND SURVEY MONUMENT RECORD

TYPE OF MONUMENT: HARRISON (BROKEN-TOP)  
ADAMS COUNTY COORDINATES, NAD 83 (2007)

N. 293072.351

E. 559457.591

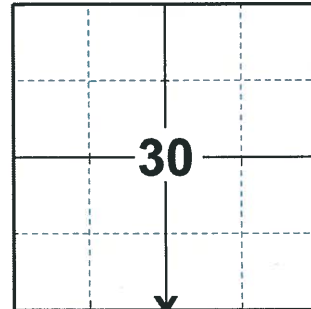
ELEVATION- - - - DATUM - - - -

FIELD WORK DATE: 03/11/2020

### BASIS FOR MONUMENT LOCATION

1979 - PLS 1478 SET CORNER PROPORTIONATE AND ON LINE BETWEEN ADJACENT SECTION CORNERS. EXTENSIVE EDM TRAVERSE WAS RUN TO DETERMINE THE LOCATION OF THIS AND ADJACENT CORNERS.

2020 - PLS 2675 FOUND PK NAIL IN THE ROAD SURFACE, 1 TIE, AND 1 WITNESS. REMOVED THE PK NAIL AND FOUND A HARRISON (BROKEN-TOP) 18"± BELOW. THE MONUMENT AGREES WITH THE WITNESS AND IS 0.90' SHORT OF THE TIE. THE MONUMENT WAS VERIFIED TO BE ON A NEAR STRAIGHT LINE BETWEEN THE SW AND SE CORNERS OF SECTION 30. ACCEPTED THE HARRISON (BROKEN-TOP) AS THE CORNER LOCATION. SET 3 NEW TIES AND MEASURED TO THE EXISTING TIE AND WITNESS.



LOCATION

(INDICATE CORNER BY "X")

SEAL:



DATA SHOWN HERE ON THIS TIE SHEET IS CORRECT AND COMPLETE TO THE BEST OF MY KNOWLEDGE AND BELIEF.

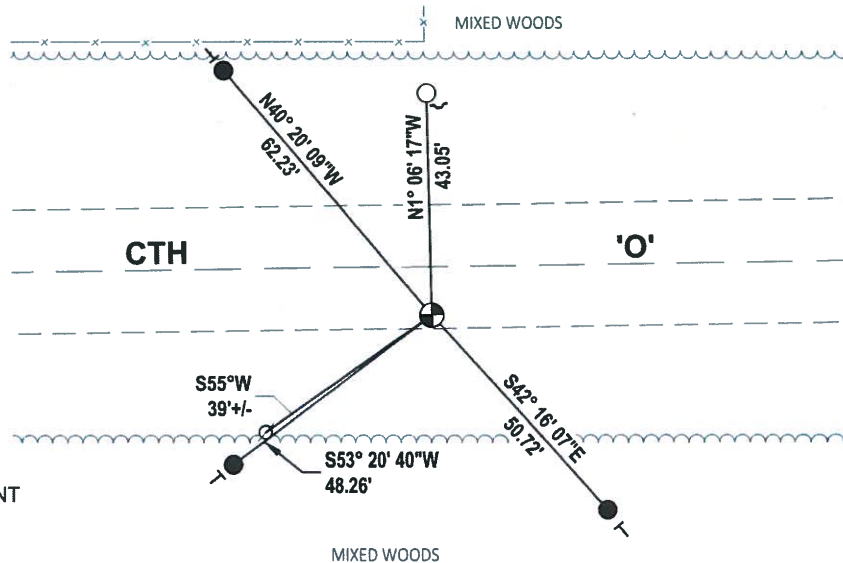
PROFESSIONAL LAND SURVEYOR

DATE 3/25/2020

### - TIE SKETCH

NOTE: THE CORNER LANDS 9.3'± SOUTH OF CTH  
'O' CENTERLINE

NOTE: DRIVEWAY #649 LANDS 70'± EAST OF THE CORNER



- SET 3/4" x 18" IRON REBAR, 1.50#/FT
- FOUND 3/4" IRON ROD
- ⊕ FOUND HARRISON (BROKEN-TOP) MONUMENT
- ⊙ WITNESS POWER POLE
- └ STEEL FENCE POST
- └ VINYL "T" POST

# Government Land Corner Certificate

ADAMS County

TYPE OF MONUMENT: HARRISON

STATE PLANE COORDINATES: N \_\_\_\_\_  
E \_\_\_\_\_

ELEVATION — M.S.L. DATUM: \_\_\_\_\_

THETA ANGLE: \_\_\_\_\_

FIELD BOOK: 57 PAGE 74

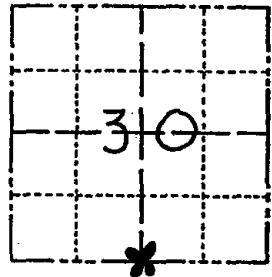
DRAWN BY: B. MERZ

CORNER NO. 102

SECTION 30

TOWN 20

RANGE 7



LOCATION  
(Indicated by 'X')

## BASIS FOR MONUMENT LOCATION

Show info such as: History of corner, with reference to Vol. and pg., dates, surveyor; exact description of monument replaced; if location computed, by taped or EDM traverse; landowner remarks, etc. (Use reverse side if necessary)

Set corner proportionate and on line between adjacent section corners. Extensive EDM traverse was run to determine the location of this and adjacent corners.

SEAL:



DATA SHOWN HERE ON  
CERTIFIED CORRECT:

*Gregory P. Rhinehart*  
Registered Land Surveyor

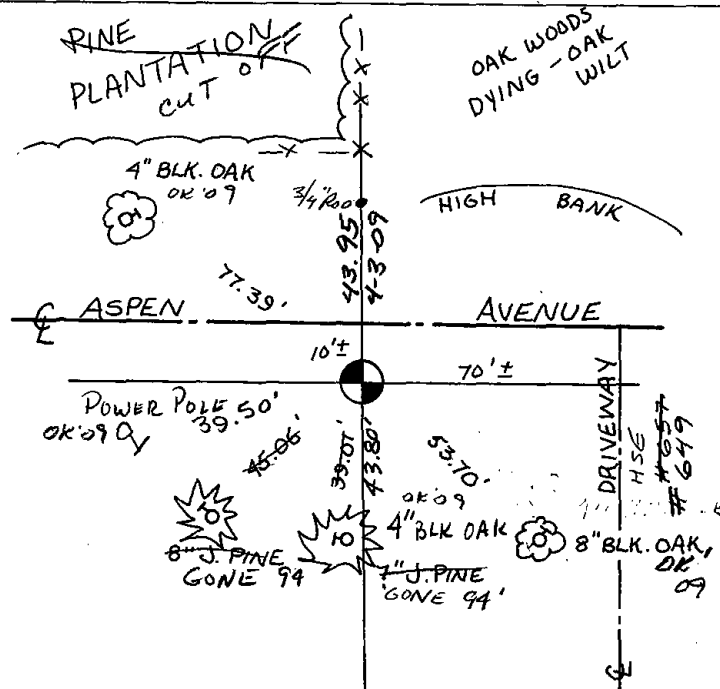
DATE: 7/3/79

Ok 4-20-84 SS-DK

3-GONE, 3-NEW TIES 3-16-99 JG-SS

## TIE SKETCH

Show at least four ties, also fence lines, roads, topo, size and type of witness trees' and if off road - best way to arrive at corner.



## MAINTENANCE RECORD

| Date    | Init. | Remarks   |
|---------|-------|---|
| 6-01-09 | STS   | OK  |
| 4-3-09  | SS    | SET IRON NAIL FROM TIES S-W CHECKS OK NW AND SE |
|         |       |   |
|         |       |   |
|         |       |   |
|         |       |   |