

ADAMS COUNTY

PUBLIC LAND SURVEY MONUMENT RECORD

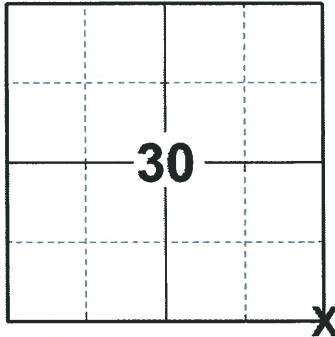
TYPE OF MONUMENT: HARRISON (BROKEN-TOP)
ADAMS COUNTY COORDINATES, NAD 83 (2007)

N. 293095.811

E. 562102.854

ELEVATION- DATUM

FIELD WORK DATE: 03/11/2020



LOCATION

(INDICATE CORNER BY "X")

BASIS FOR MONUMENT LOCATION

1980 - PLS 1478 A.B.K. EXCAVATED WITH BACKHOE AND FOUND 3"X8"X17" FLAT PINK STONE. LOCATION MATCHED WITH TIE BY PHILLIPS TO POST AND STONES TO NORTHWEST. LOWERED STONE AND SET HARRISON STANDARD. PHILLIPS NOTES RECORDED IN ADAMS CO. SURVEYOR RECORD VOLUME 2, PAGE 164.

2020 - PLS 2675 FOUND A SURVEY NAIL AND MAGNAIL IN THE ROAD SURFACE, AND 1 WITNESS. REMOVED BOTH THE SURVEY NAIL AND MAGNAIL AND FOUND A HARRISON (BROKEN-TOP) 24"± BELOW. THE MONUMENT AGREES WITH THE WITNESS. ACCEPTED THE HARRISON (BROKEN-TOP) AS THE CORNER LOCATION. SET 4 NEW TIES AND MEASURED TO THE EXISTING WITNESS.

SEAL:



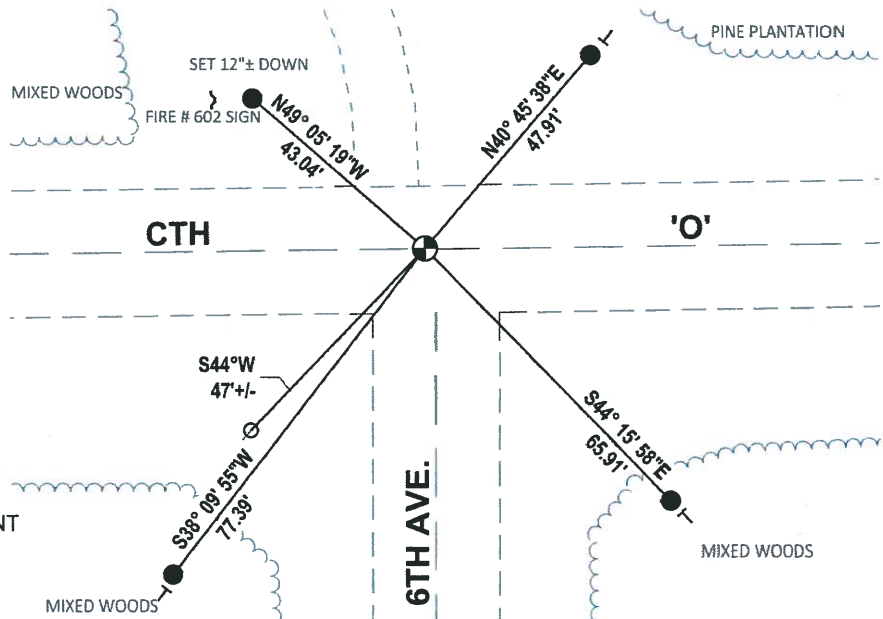
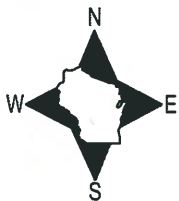
DATA SHOWN HERE ON THIS TIE SHEET IS CORRECT AND COMPLETE TO THE BEST OF MY KNOWLEDGE AND BELIEF.

PROFESSIONAL LAND SURVEYOR

DATE 3/25/2020

- TIE SKETCH

NOTE: THE CORNER LANDS ON THE CENTERLINE OF CTH 'O' AND 2± WEST OF 6TH AVE. CENTERLINE

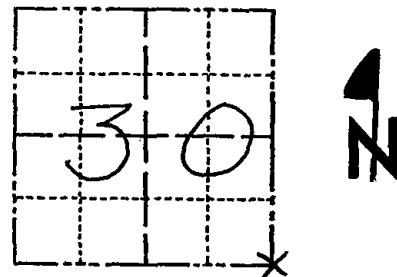


- SET 3/4" x 18" IRON REBAR, 1.50#/FT
- ⊕ FOUND HARRISON (BROKEN-TOP) MONUMENT
- ⊙ WITNESS POWER POLE
- ┌ STEEL FENCE POST

Government Land Corner Certificate

ADAMS County
 TYPE OF MONUMENT: HARRISON
 STATE PLANE COORDINATES: N _____
 E _____
 ELEVATION — M.S.L. DATUM: _____
 THETA ANGLE: _____
 FIELD BOOK: 78 101 PAGE 106 66
 DRAWN BY: G. Rhinehart

CORNER NO. 103
 SECTION 30
 TOWN 20
 RANGE 7



LOCATION
(Indicated by 'X')

BASIS FOR MONUMENT LOCATION

Show info such as: History of corner, with reference to Vol. and pg., dates, surveyor; exact description of monument replaced; if location computed, by taped or EDM traverse; landowner remarks, etc. (Use reverse side if necessary)

A.B.K. excavated / backhoe and found
 3" x 8" x 17" flat pink stone.
 Location matched with tie by
 Phillips to Post & Stones to
 northwest. Lowered stone & set
 Harrison standard.

Phillips notes recorded in Adams Co.
 Surveyor Record Vol. 2 Pg. 164.

SEAL:



DATA SHOWN HERE ON
 CERTIFIED CORRECT:

Gregory P. Rhinehart
 Registered Land Surveyor

DATE: 1/29/80

OK 4-20-84 SS-DK

TIE SKETCH

Show at least four ties, also fence lines, roads, topo, size and type of witness trees and if off road - best way to arrive at corner.

