

28
SECTION

20
TOWN

07
RANGE

ADAMS COUNTY

COUNTY CORNER NO: 106

ROMPORTOL ID: 42007280020

PUBLIC LAND SURVEY MONUMENT RECORD

TYPE OF MONUMENT: HARRISON (BROKEN-TOP)
ADAMS COUNTY COORDINATES, NAD 83 (2007)

N. 293133.970

E. 570069.184

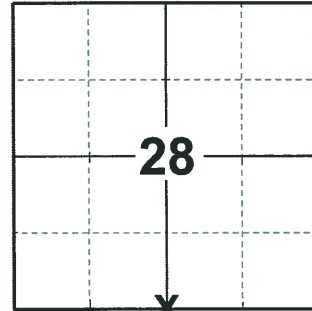
ELEVATION- DATUM

FIELD WORK DATE: 03/02/2020

BASIS FOR MONUMENT LOCATION

1976 - PLS 878 EXCAVATED WITH BACKHOE. FOUND 5"X11"X11" SANDSTONE. WITNESSED BY EMIL, AND HERMAN NELSON, LOCAL LANDOWNERS. LOWERED STONE AND SET HARRISON ON TOP. STONE BELIEVED TO HAVE BEEN SET BY BARRETT PER HIS NOTES IN OLD FIELD BOOKS VOLUME 2, PAGE 207.

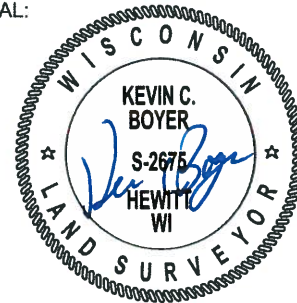
2020 - PLS 2675 FOUND HARRISON (BROKEN-TOP) 24"± BELOW THE ROAD SURFACE, 1 TIE, AND 2 WITNESSES. THE MONUMENT AGREES WITH THE TIE AND BOTH WITNESSES. ACCEPTED THE HARRISON (BROKEN-TOP) AS THE CORNER LOCATION. SET 3 NEW TIES AND MEASURED TO THE EXISTING TIE AND WITNESSES.



LOCATION

(INDICATE CORNER BY "X")

SEAL:



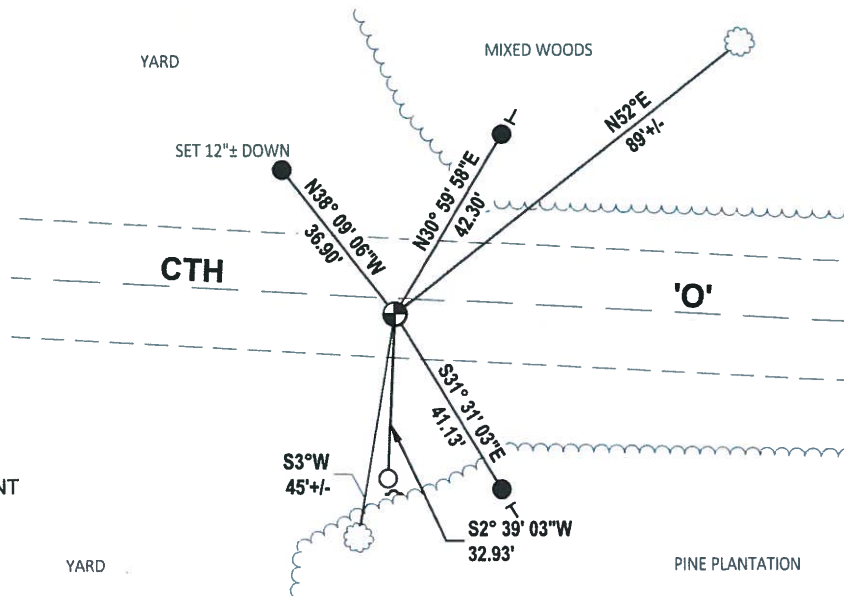
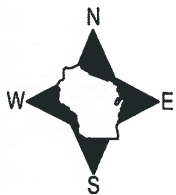
DATA SHOWN HERE ON THIS TIE SHEET IS CORRECT AND COMPLETE TO THE BEST OF MY KNOWLEDGE AND BELIEF.

PROFESSIONAL LAND SURVEYOR

DATE 3/25/2020

TIE SKETCH

NOTE: THE CORNER LANDS 3'± SOUTH OF CTH 'O' CENTERLINE



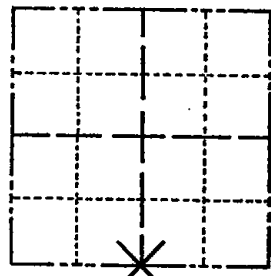
- SET 3/4" x 18" IRON REBAR, 1.50#/FT
- FOUND 3/4" IRON ROD
- ⊕ FOUND HARRISON (BROKEN-TOP) MONUMENT
- ~ STEEL FENCE POST
- VINYL "T" POST
- ⊙ WITNESS TREE

ADAMS COUNTY

Survey Monument Record

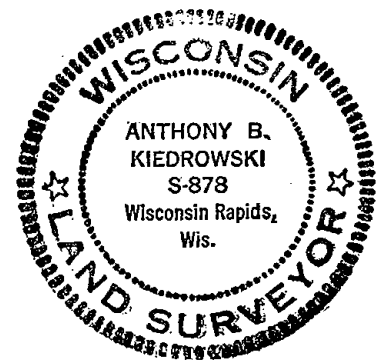
TYPE OF MONUMENT: Harrison standard
STATE PLANE COORDINATES: N _____
E _____
ELEVATION — M.S.L. DATUM: _____
THETA ANGLE: _____
FIELD BOOK: 101 PAGE 68

CORNER NO. 106
SECTION 28
TOWN 20
RANGE 7



LOCATION
(Indicated by 'X')

SEAL:



BASIS FOR MONUMENT LOCATION

(Use reverse side if necessary)

Show info such as: History of corner, with reference to Vol. and pg, dates, surveyor; exact description of monument replaced; if location computed, by taped or EDM traverse; landowner remarks, etc.

Excavated with backhoe. Found 5"x11"x11" sandstone. Witnessed by Emil, and Herman Neilson, local landowners. Lowered stone and set Harrison on top-

Stone believed to have been set by Barrett per his notes in old field books Vol. 2 pg. 207.

OK 3-23-79 RN-DW
OK 4-20-84 SS-DK

CERTIFIED CORRECT:

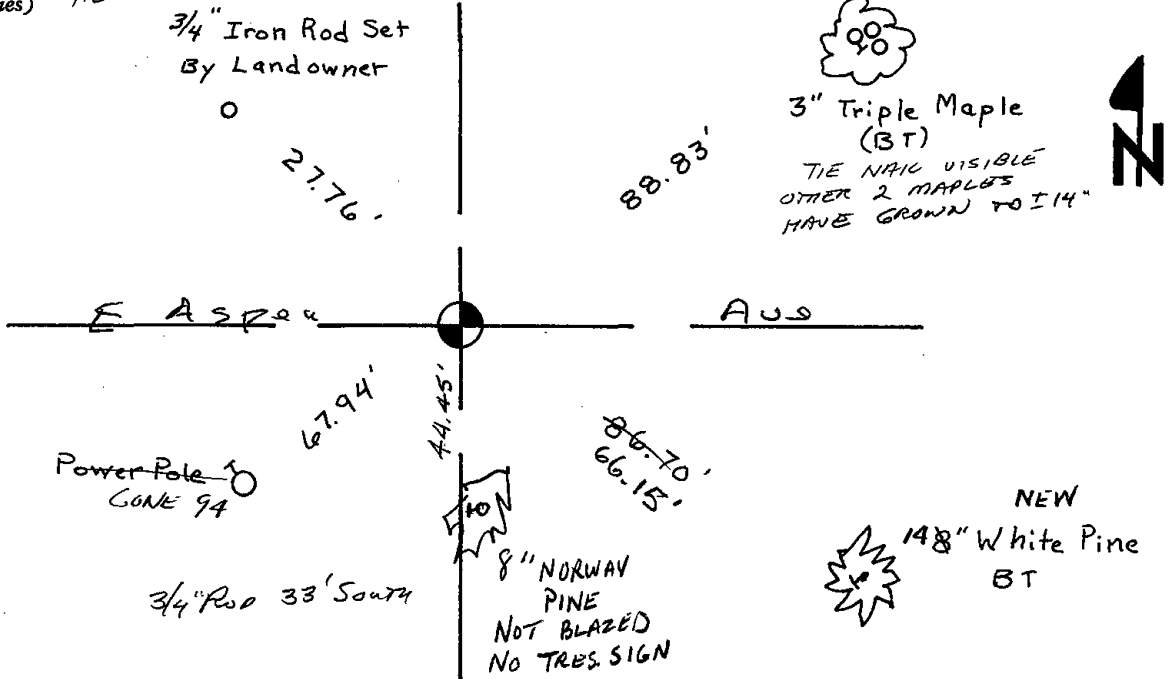
Anthony B. Kiedrowski
Registered Land Surveyor
DATE: 10/12/76

2-GONE, 2-NEWTIES 3-16-94 JG-SS

TIE SKETCH

(Show at least four ties)

OK 2-12-99 JG
OK 6-01-04 STS
TIES OK 2-6-09 SS



Handwritten scribbles and faint lines on the left side of the page.

Faint handwritten marks or scribbles at the bottom right corner.