

PUBLIC LAND SURVEY MONUMENT RECORD

TYPE OF MONUMENT: HARRISON (BROKEN-TOP)
 ADAMS COUNTY COORDINATES, NAD 83 (2007)

N. 293170.380

E. 575363.193

ELEVATION- _____ DATUM _____

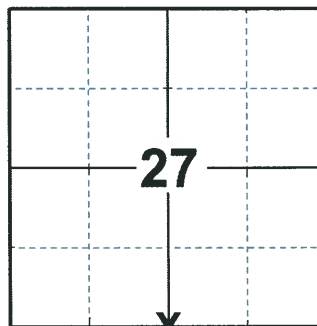
FIELD WORK DATE: 03/02/2020

BASIS FOR MONUMENT LOCATION

1975 - PLS 1103 RAN EDM/TRANSIT TRAVERSE AROUND SECTIONS 35 AND 36 TO DETERMINE SEARCH AREAS. COULD FIND NO EVIDENCE OF THE ORIGINAL CORNER OR ANY SUBSEQUENT REMONUMENTATION, OR OF ANY ACCESSORY MONUMENTS. SET CORNER HALF WAY AND ON LINE BETWEEN ADJACENT SECTION CORNERS.

1991 - PLS 1821 FOUND MONUMENT CERTIFIED BY DALE C. HAGEN R.L.S. #1103 DATED MAY 5, 1975. RETIED MONUMENT.

2020 - PLS 2675 FOUND RAIL ROAD SPIKE IN THE ROAD SHOULDER, REMOVED AND FOUND HARRISON (BROKEN-TOP) 36"± BELOW, AND 1 WITNESS TREE. THE MONUMENT AGREES WITH THE WITNESS TREE. ACCEPTED THE HARRISON (BROKEN-TOP) AS THE CORNER LOCATION. SET 4 NEW TIES AND MEASURED TO THE EXISTING WITNESS TREE.



LOCATION
 (INDICATE CORNER BY "X")

SEAL:



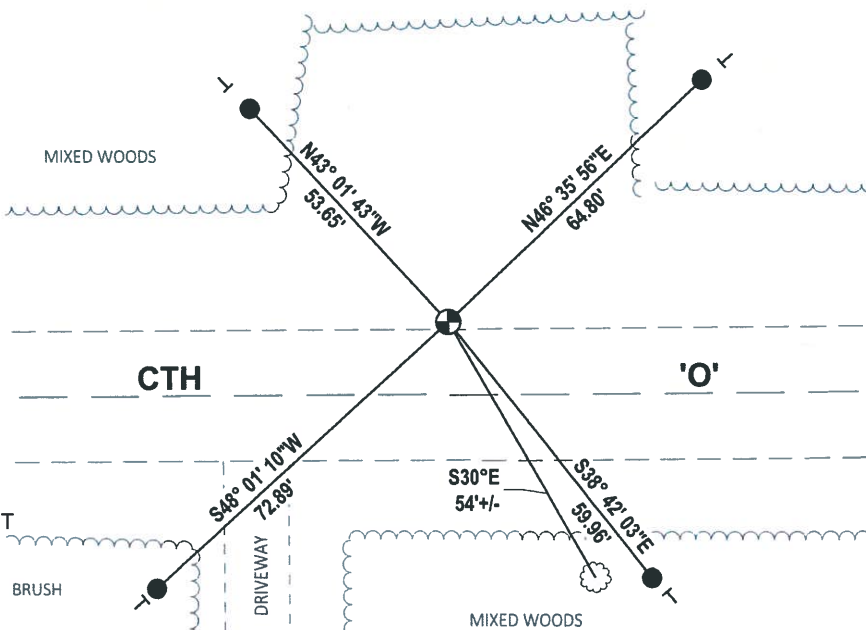
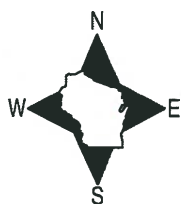
DATA SHOWN HERE ON THIS TIE SHEET IS CORRECT AND COMPLETE TO THE BEST OF MY KNOWLEDGE AND BELIEF.

PROFESSIONAL LAND SURVEYOR

DATE 3/25/2020

TIE SKETCH

NOTE: THE CORNER LANDS 13.2'± NORTH OF CTH 'O' CENTERLINE



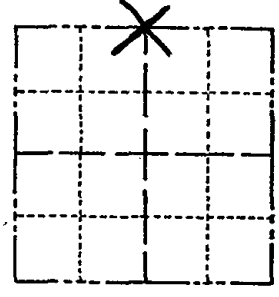
- SET 3/4" x 18" IRON REBAR, 1.50#/FT
- ⊙ FOUND HARRISON (BROKEN-TOP) MONUMENT
- ⊖ VINYL "T" POST
- ⊙ WITNESS TREE

Government Land Corner Certificate

108

ADAMS County
 TYPE OF MONUMENT: HARRISON
 STATE PLANE COORDINATES: N _____
 E _____
 ELEVATION — M.S.L. DATUM: _____
 THETA ANGLE: _____
 FIELD BOOK: _____ PAGE _____
 DRAWN BY: Visser

CORNER NO. 653
 SECTION 34
 TOWN 20
 RANGE 7-E



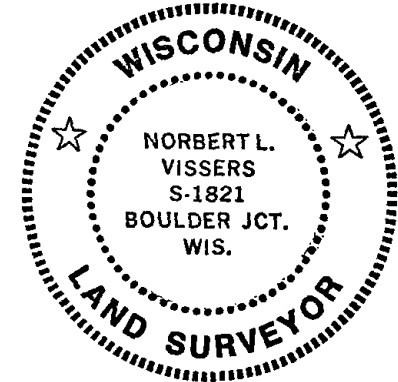
LOCATION
(Indicated by 'X')

BASIS FOR MONUMENT LOCATION

Show info such as: History of corner, with reference to Vol. and pg., dates, surveyor; exact description of monument replaced; if location computed, by taped or EDM traverse; landowner remarks, etc. (Use reverse side if necessary)

Found Monument Certified By Dale C. Hagen
 R.L.S. #1103 Dated May 5, 1975.
 Retied Monument as shown below.

SEAL:



DATA SHOWN HERE ON CERTIFIED CORRECT:

Norbert L. Visser
 Registered Land Surveyor

DATE: Jan. 17, 1991

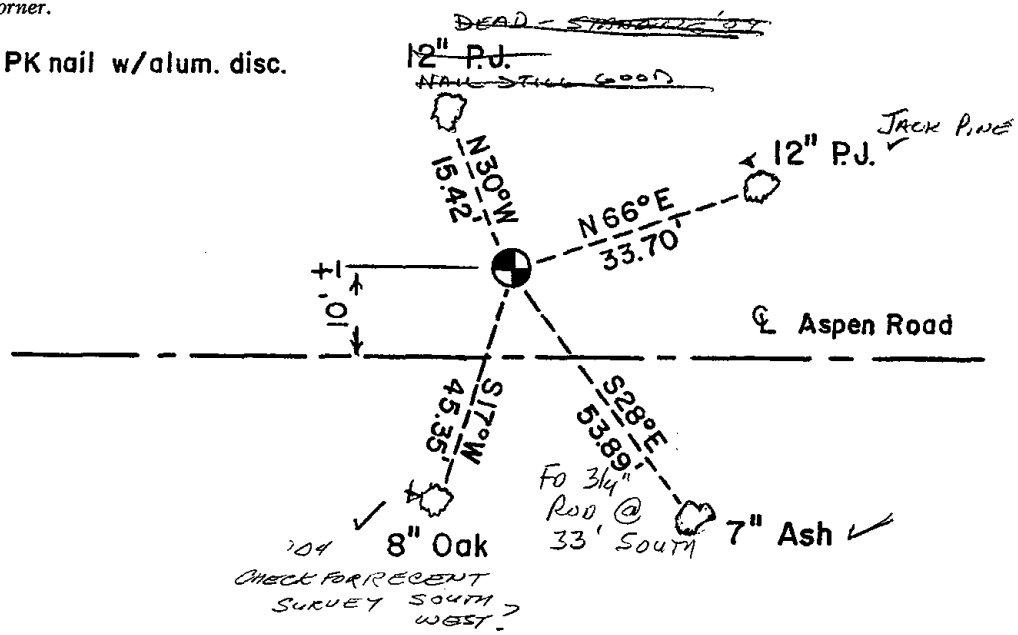
OK 6-01-04 SJS
 OK 3-16-94 JG-SS
 OK 2-12-99 JG

CHECK SURVEY SO. HAR OK 7-6-04 SS

TIE SKETCH

Show at least four ties, also fence lines, roads, topo, size and type of witness trees and if off road - best way to arrive at corner.

Ties to PK nail w/alum. disc.

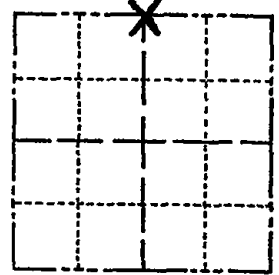


ADAMS COUNTY

Survey Monument Record

TYPE OF MONUMENT: Harrison Monument
 STATE PLANE COORDINATES: N _____
 E _____
 ELEVATION — M.S.L. DATUM: _____
 THETA ANGLE: _____
 FIELD BOOK: _____ PAGE _____

CORNER NO. 653
 SECTION 34
 TOWN 20
 RANGE 7



LOCATION
(Indicated by 'X')

SEAL:

BASIS FOR MONUMENT LOCATION

(Use reverse side if necessary)

Show info such as: History of corner, with reference to Vol. and pg, dates, surveyor; exact description of monument replaced; if location computed, by taped or EDM traverse; landowner remarks, etc.

Ran EDM/transit traverse around Sections 35 and 36 to determine search areas.

Could find no evidence of the original corner or any subsequent remonumentation, or of any accessory monuments.

Set corner half way and on line between adjacent section corners.



CERTIFIED CORRECT:

Dale C Hagen
 Registered Land Surveyor

DATE: May 5, 1975

Ok 4-30-84 SS-DK
 OK 3-23-79 DW-RN

TIE SKETCH

(Show at least four ties)

NOTE: Ties in trees to nail in disc.

NOTE: Bearing trees marked BT are blazed and scribed with BT

