

26
SECTION

20
TOWN

07
RANGE

ADAMS COUNTY

COUNTY CORNER NO: 111

ROMPORTOL ID: 42007260000

PUBLIC LAND SURVEY MONUMENT RECORD

TYPE OF MONUMENT: SURVEY NAIL
ADAMS COUNTY COORDINATES, NAD 83 (2007)

N. 293248.241

E. 583327.982

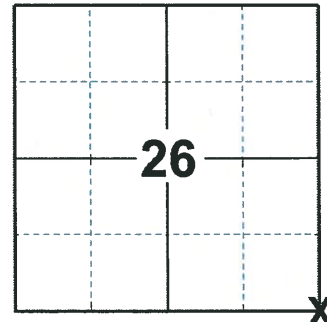
ELEVATION- - - - DATUM - - - -

FIELD WORK DATE: 02/27/2020

BASIS FOR MONUMENT LOCATION

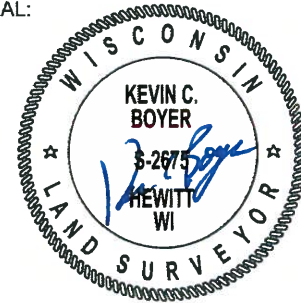
1975 - PLS 1103 RAN EDM/TRANSIT TRAVERSE AROUND SECTION 35 AND 36 TO DETERMINE SEARCH AREAS. COULD FIND NO EVIDENCE OF THE ORIGINAL CORNER OR ANY REMONUMENTATION, OR ACCESSORY MONUMENTS AFTER EXCAVATION WITH BACKHOE. SET CORNER BY PROPORTIONATE MEASURE BETWEEN SECTION CORNERS TO EAST AND WEST, AND BY DOUBLING OVER DISTANCE BETWEEN SOUTHWEST AND WEST QUARTER CORNER.

2020 - PLS 2675 FOUND NO MONUMENT, TIES, OR WITNESS FOR THIS CORNER. CALCULATED THE CORNER LOCATION ON A STRAIGHT LINE FROM THE SW AND S1/4 EAST AND A DISTANCE OF 2661.12' PER SECTION 26 SECTION SUMMARY. THIS LOCATION ALSO AGREES WITH THE SOUTH LINE OF SW1/4 SECTION DISTANCE FROM THE SECTION 25 SUMMARY OF 2634.18'. ACCEPTED THIS AS THE CORNER LOCATION. SET A SURVEY NAIL AT THIS CALCULATED LOCATION AND SET 4 NEW TIES.



LOCATION
(INDICATE CORNER BY "X")

SEAL:



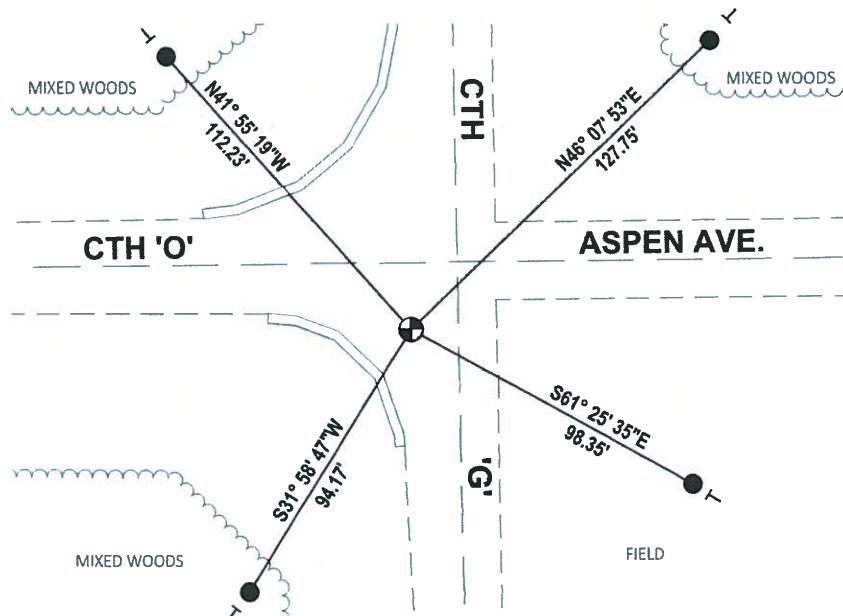
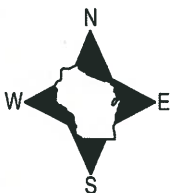
DATA SHOWN HERE ON THIS TIE SHEET IS CORRECT AND COMPLETE TO THE BEST OF MY KNOWLEDGE AND BELIEF.

PROFESSIONAL LAND SURVEYOR

DATE 3/25/2020

- TIE SKETCH

NOTE: THE CORNER LANDS 14.8'± WEST OF CTH 'G' CENTERLINE AND 19.3'± SOUTH OF CTH 'O'/ASPEN AVE. CENTERLINE



- SET 3/4" x 18" IRON REBAR, 1.50#/FT
- ⊕ SET SURVEY NAIL MONUMENT
- └ VINYL "T" POST

ADAMS COUNTY

Survey Monument Record

TYPE OF MONUMENT: Harrison Monument / RESET 3/4" X 24" IRON ROD

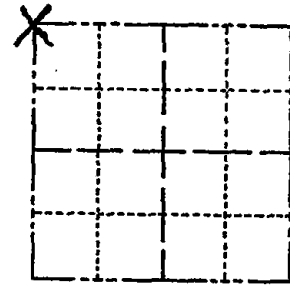
STATE PLANE COORDINATES: N _____
E _____

ELEVATION — M.S.L. DATUM: _____

THETA ANGLE: _____

FIELD BOOK: _____ PAGE _____

CORNER NO. 656
SECTION 36
TOWN 20
RANGE 7



LOCATION
(Indicated by 'X')

SEAL:



BASIS FOR MONUMENT LOCATION

(Use reverse side if necessary)

Show info such as: History of corner, with reference to Vol. and pg, dates, surveyor; exact description of monument replaced; if location computed, by taped or EDM traverse; landowner remarks, etc.

Ran EDM/transit traverse around Section 35 and 36 to determine search areas.

Could find no evidence of the original corner or any remonumentation, or accessory monuments after excavation with backhoe.

Set corner by proportionate measure between section corners to East and West, and by doubling over distance between Southwest and West Quarter corner.

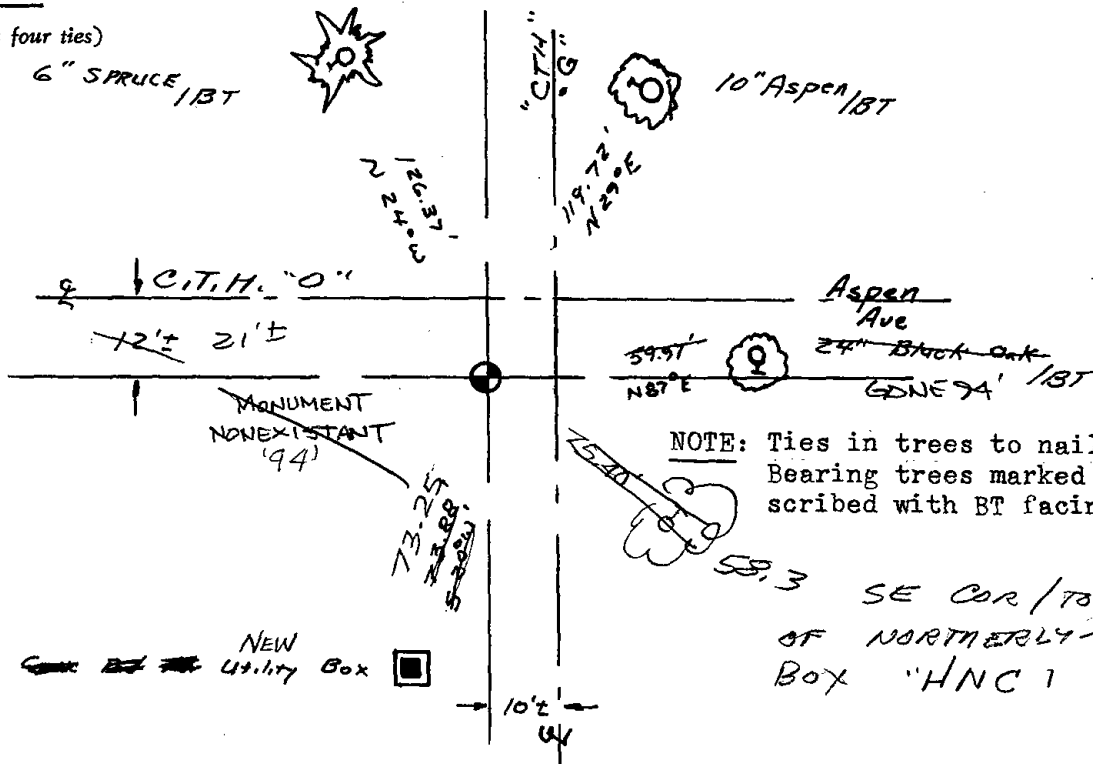
OK 3-22-79 RW-JSK
HARRISON GONE, RESET 3/4" X 24" IRON ROD FROM TIES
2-GONE, 2-NEW TIES 6/16/94 BS-JG
OK 2-12-99-JG

CERTIFIED CORRECT:

Dale C. Hagen
Registered Land Surveyor
DATE: May 5, 1975

TIE SKETCH FD 3/4" ROD - ADD 1778 7-6-04 55

(Show at least four ties)



100

100

1