

25
SECTION

20
TOWN

07
RANGE

ADAMS COUNTY

COUNTY CORNER NO: 112

ROMPORTOL ID: 42007250020

PUBLIC LAND SURVEY MONUMENT RECORD

TYPE OF MONUMENT: HARRISON (BROKEN-TOP)
ADAMS COUNTY COORDINATES, NAD 83 (2007)

N. 293274.823

E. 585962.032

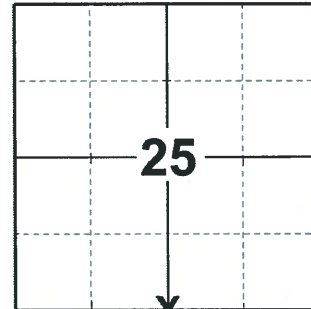
ELEVATION- - - - DATUM - - - -

FIELD WORK DATE: 02/18/2020

BASIS FOR MONUMENT LOCATION

1975 - PLS 1103 RAN EDM/TRANSIT TRAVERSE AROUND SECTIONS 35 AND 36. COULD FIND NO EVIDENCE OF THIS CORNER OR ANY ACCESSORY MONUMENTS. EXCAVATED WITH BACKHOE. SET CORNER EQUIDISTANT AND ON LINE BETWEEN ADJACENT SECTION CORNERS.

2020 - PLS 2675 FOUND HARRISON (BROKEN-TOP) 6"± BELOW THE GROUND AND 1 TIE. THE MONUMENT AGREES WITH THE TIE. ACCEPTED THE HARRISON (BROKEN-TOP) AS THE CORNER LOCATION. SET 3 NEW TIES AND MEASURED TO THE EXISTING TIE.



LOCATION

(INDICATE CORNER BY "X")

SEAL:



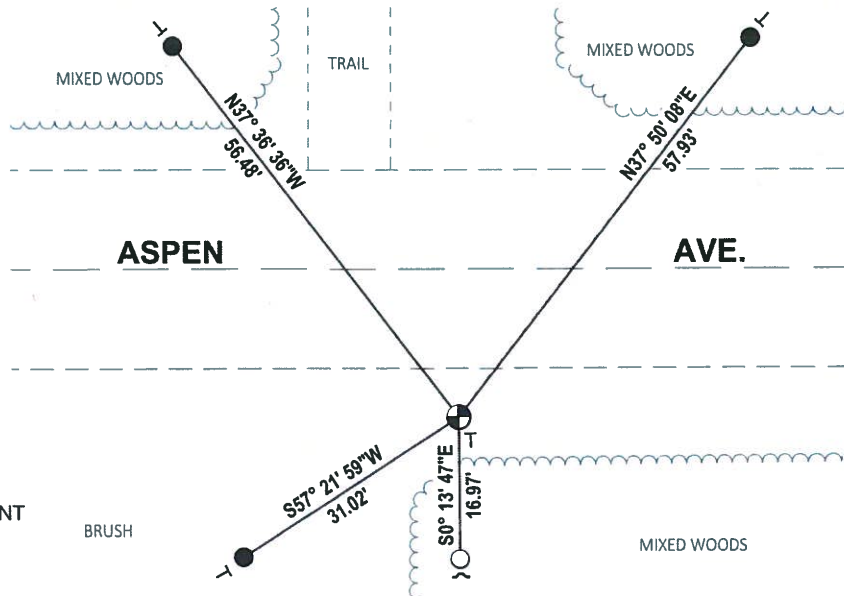
DATA SHOWN HERE ON THIS TIE SHEET IS CORRECT AND COMPLETE TO THE BEST OF MY KNOWLEDGE AND BELIEF.

PROFESSIONAL LAND SURVEYOR

DATE 3/25/2020

- TIE SKETCH

NOTE: THE CORNER LANDS 18"± SOUTH OF ASPEN AVE. CENTERLINE



- SET 3/4" x 18" IRON REBAR, 1.50#/FT
- FOUND 3/4" IRON ROD
- ⊕ FOUND HARRISON (BROKEN-TOP) MONUMENT
- ┘ STEEL FENCE POST
- └ VINYL "T" POST

ADAMS COUNTY

Survey Monument Record

TYPE OF MONUMENT: Harrison Monument

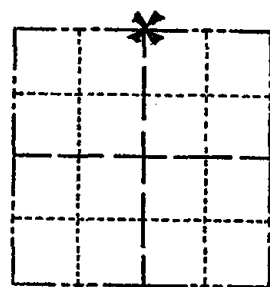
STATE PLANE COORDINATES: N _____
E _____

ELEVATION — M.S.L. DATUM: _____

THETA ANGLE: _____

FIELD BOOK: _____ PAGE _____

CORNER NO. 657
SECTION 36
TOWN 20 N
RANGE 7 E



LOCATION
(Indicated by 'X')

SEAL:

BASIS FOR MONUMENT LOCATION

(Use reverse side if necessary)

Show info such as: History of corner, with reference to Vol. and pg, dates, surveyor; exact description of monument replaced; if location computed, by taped or EDM traverse; landowner remarks, etc.

Ran EDM/transit traverse around Sections 35 and 36.

Could find no evidence of this corner or any accessory monuments. Excavated with backhoe.

Set corner equidistant and on line between adjacent Section corners.

See the reverse side for the new map 4-30-84

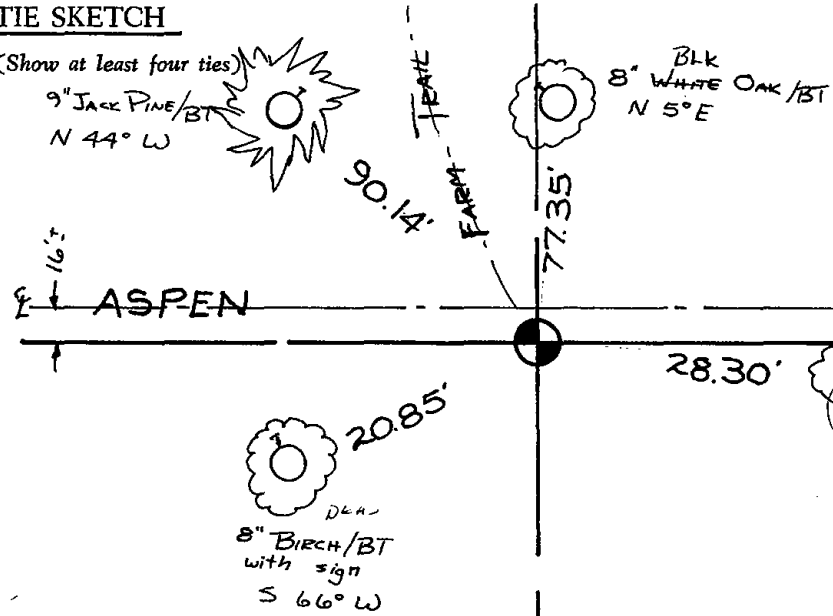
OK 3-22-79 RN-JSK



CERTIFIED CORRECT
Dale C. Hagen
Registered Land Surveyor
DATE: May 5, 1975

TIE SKETCH

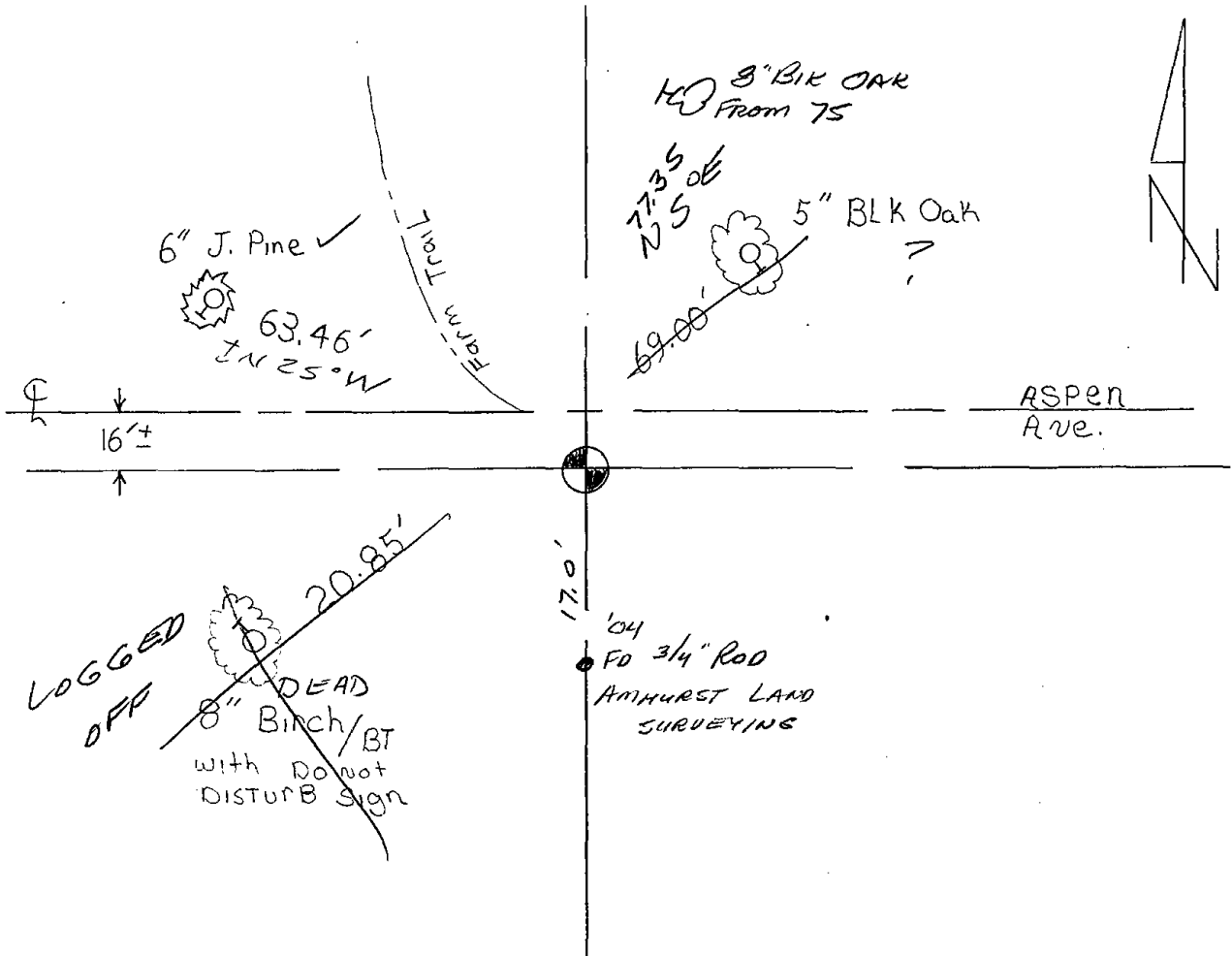
(Show at least four ties)



NOTE: Ties in trees to nail in disc.
NOTE: Ties marked BT are blazed and scribed with BT.



(OVER)



New ties set on 4-30-84 SS-DK

OK 3-16-94 JG-SS

DK 2-12-99 - JG

SEE SURVEY TO SOUTH 7-6-04 SS

OK 2-06-09 SS