

SECTION 25 TOWN 20 RANGE 07

# ADAMS COUNTY

COUNTY CORNER NO: 113  
 ROMPORTOL ID: 42007250000

## PUBLIC LAND SURVEY MONUMENT RECORD

TYPE OF MONUMENT: HARRISON  
 ADAMS COUNTY COORDINATES, NAD 83 (2007)

N. 293301.678

E. 588596.122

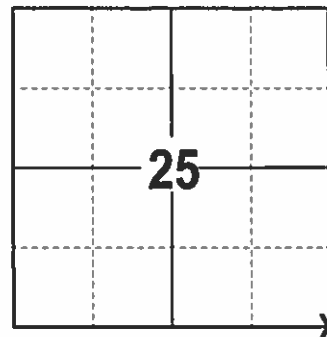
ELEVATION- --- DATUM ---

FIELD WORK DATE: 12/27/2016

### BASIS FOR MONUMENT LOCATION

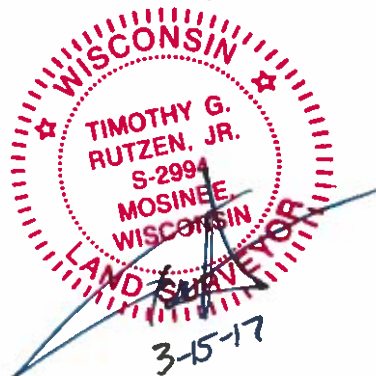
1975 - PLS 878 EXCAVATED WITH BACKHOE AND FOUND A SANDSTONE. LOWERED STONE AND SET A HARRISON ABOVE STONE. NO RECORD OF STONE'S HISTORY. EDM TRAVERSE OF SECTION 36 VERIFIED LOCATION. SET 3 TIES AND REMEASURED TO WITNESSES.

2017 - PLS 2994 FOUND A HARRISON 3 INCHES BELOW THE ROAD SURFACE, 2 EXISTING TIES AND 1 EXISTING WITNESS. THE HARRISON AGREES WITH EXISTING TIES AND WITNESS. ACCEPTED HARRISON AND REMEASURED TO THE EXISTING TIES, WITNESS AND SET 2 NEW TIES.



LOCATION  
 (INDICATE CORNER BY "X")

SEAL:



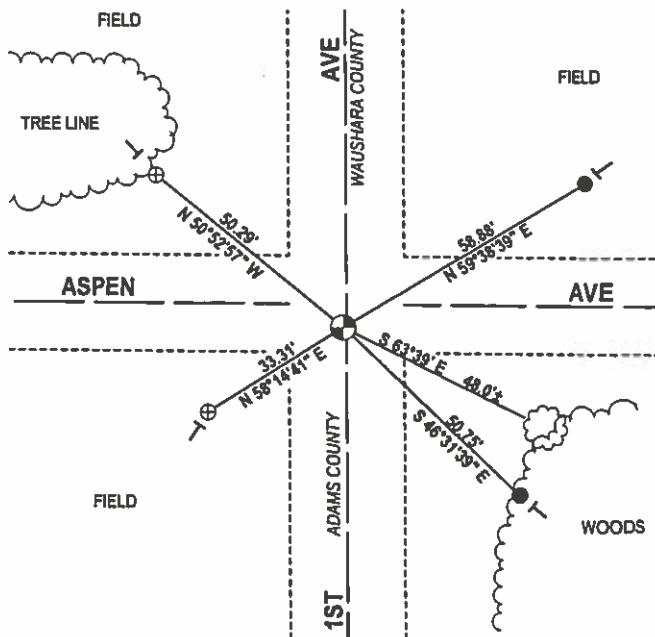
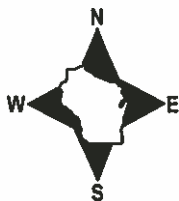
DATA SHOWN HERE ON THIS TIE SHEET IS CORRECT AND COMPLETE TO THE BEST OF MY KNOWLEDGE AND BELIEF.

PROFESSIONAL LAND SURVEYOR

DATE 3-15-17

### - TIE SKETCH

NOTE: THE CORNER FALLS 1'± WEST OF THE CENTERLINE OF 1ST AVE AND 5'± SOUTH OF THE CENTERLINE OF ASPEN AVE.



- 3/4" X 18" IRON REBAR SET, 1.50#/FT
- ⊕ 2" OD IRON PIPE WITH CAP FOUND
- ⊙ HARRISON FOUND
- VINYL "T" POST
- ☁ WITNESS TREE FOUND

# ADAMS COUNTY

## Survey Monument Record

TYPE OF MONUMENT: Harrison standard

STATE PLANE COORDINATES: N \_\_\_\_\_

E \_\_\_\_\_

ELEVATION — M.S.L. DATUM: \_\_\_\_\_

THETA ANGLE: \_\_\_\_\_

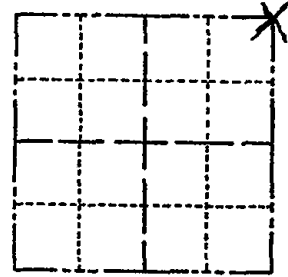
FIELD BOOK: \_\_\_\_\_ PAGE \_\_\_\_\_

CORNER NO. 658

SECTION 36

TOWN 20

RANGE 7



LOCATION  
(Indicated by 'X')

SEAL:



CERTIFIED CORRECT:

*Anthony B. Kiedrowski*  
 Registered Land Surveyor

DATE: April 24, 1975

### BASIS FOR MONUMENT LOCATION

(Use reverse side if necessary)

Show info such as: History of corner, with reference to Vol. and pg, dates, surveyor; exact description of monument replaced; if location computed, by taped or EDM traverse; landowner remarks, etc.

Excavated with backhoe. Found sandstone, lowered stone and set Harrison monument on top. No record of stone's history. EDM traverse of all of section 36 verified location.

3 left no new added 4-30-84 SS-DK

TOP BROKEN 3-19-79 DW-RN

3 NEW TIES 2 MARCH 94 CR-SS

OK 2-12-99-JG

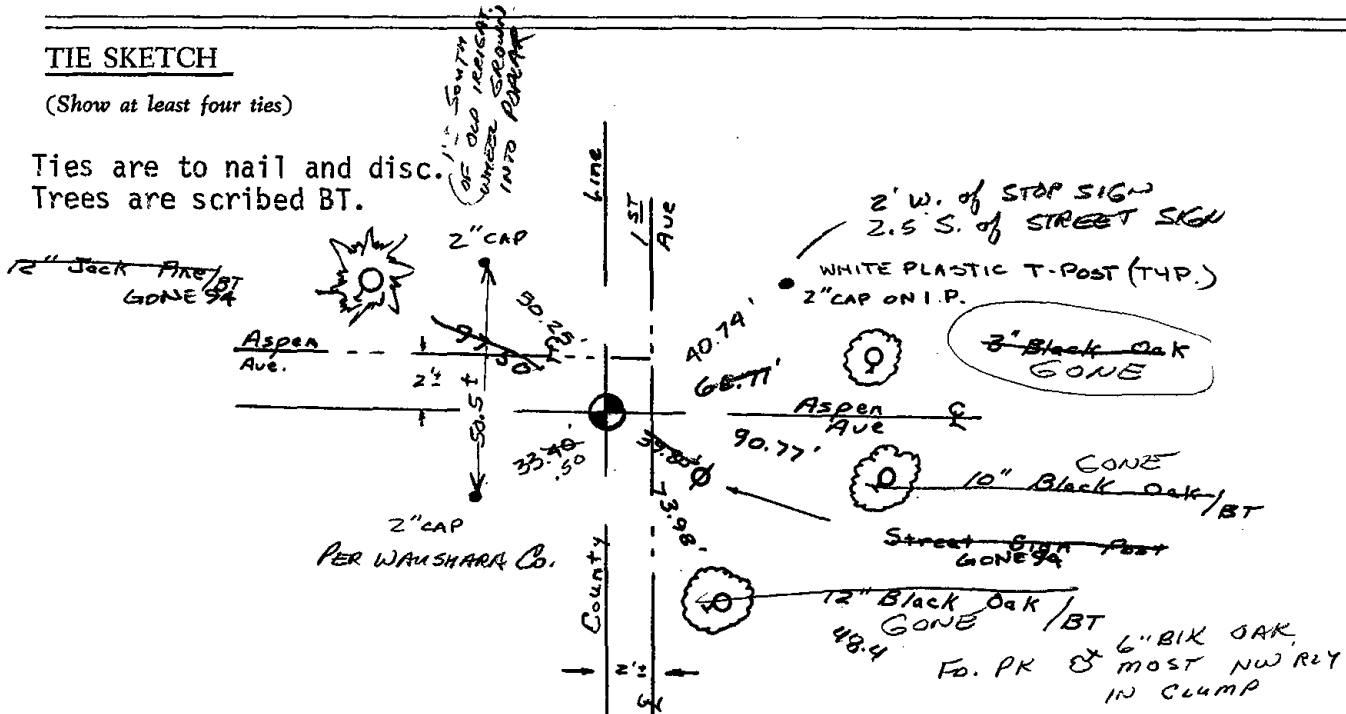
OK 7-6-04 - SEE WAUSHARA Co. UPDATE

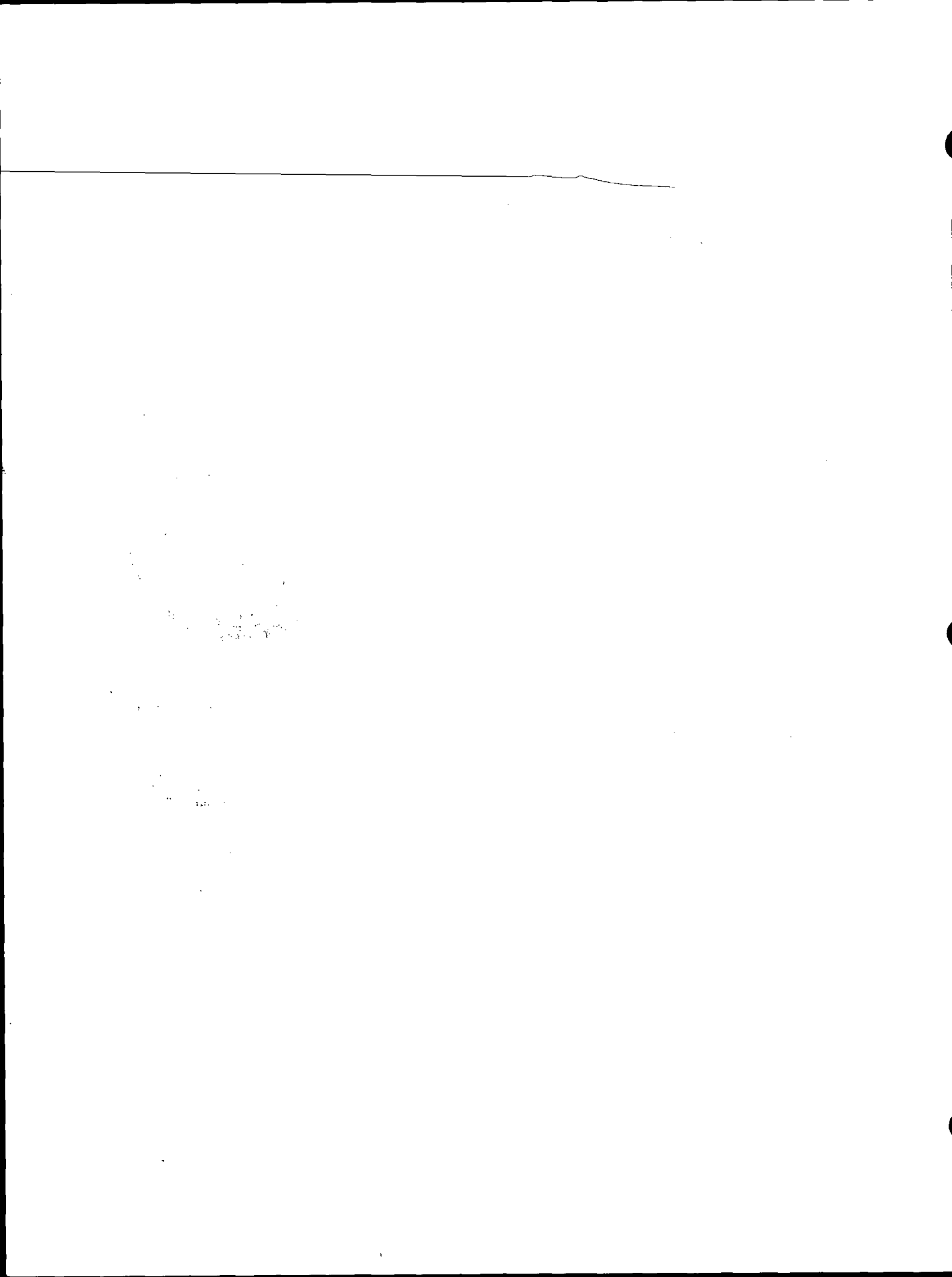
OK 7-3-09 SS

### TIE SKETCH

(Show at least four ties)

Ties are to nail and disc.  
Trees are scribed BT.





STATE OF WISCONSIN  
WAUSHARA COUNTY

WAUSHARA COUNTY  
CERTIFIED LAND CORNER

No. 113

I, \_\_\_\_\_, do hereby certify that on the \_\_\_\_\_ day of \_\_\_\_\_ 19\_\_\_\_, I found (evidence) (no evidence) of the \_\_\_\_\_ corner of \_\_\_\_\_, T \_\_\_\_\_ N, R \_\_\_\_\_ E, Fourth Principal Meridian, and I re-established said corner according to the Wisconsin Statutes as shown and described hereon.

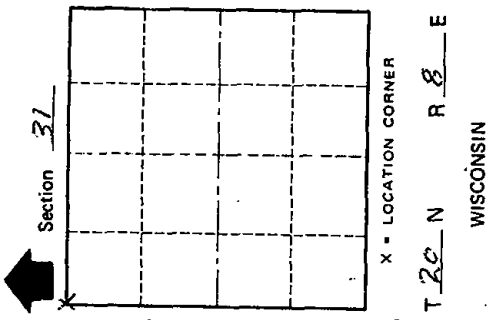
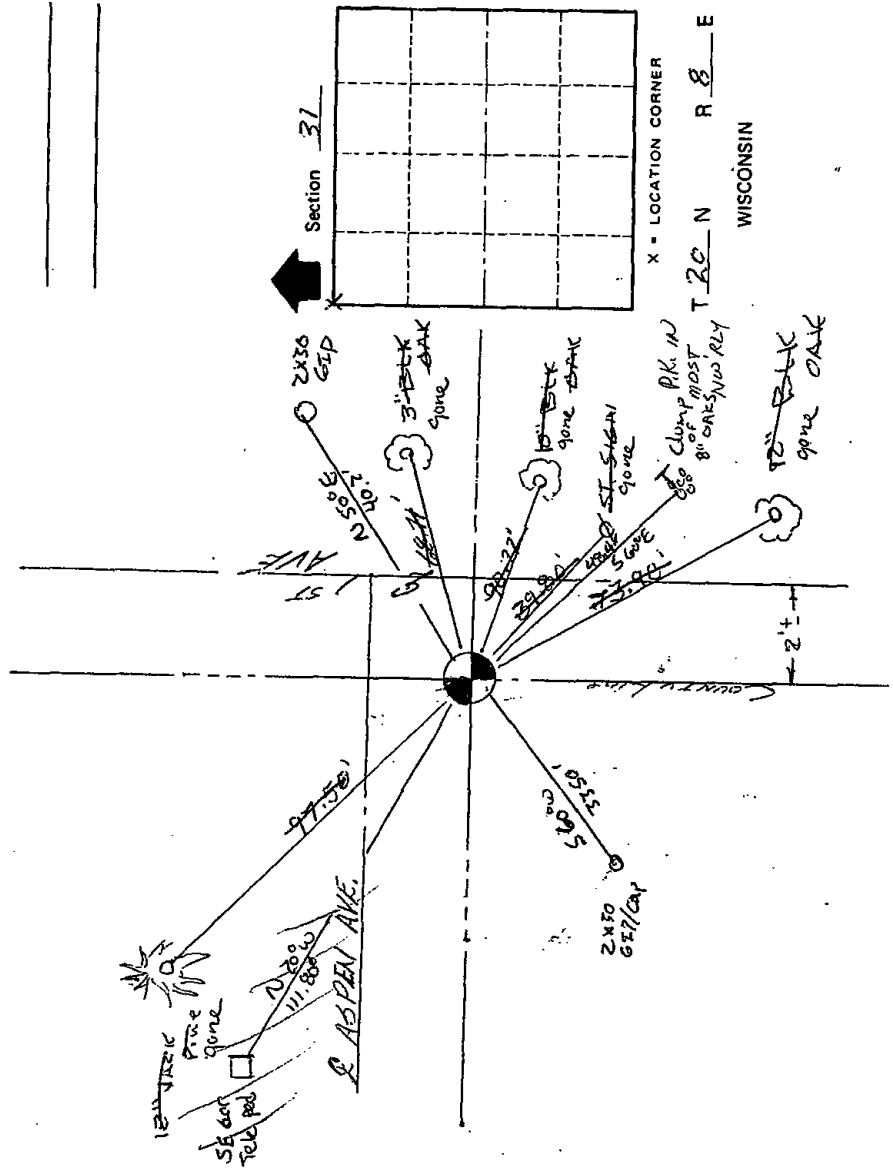
Dated this \_\_\_\_\_ day of \_\_\_\_\_ 19\_\_\_\_.

Waushara County Surveyor

*A. Knappek*

Description of corner evidence found:

Witnesses to corner location:



SURVEY CONTROL ORDER

Horizontal	_____
Vertical	_____

WISCONSIN COORDINATE SYSTEM			
Control Sta. Name	North (Y)	Elevation (Z)	Zone
Corner	_____	_____	_____
Control Sta. Name	_____	_____	_____

Approved By: \_\_\_\_\_

