

33 SECTION 15 TOWN 06 RANGE

# ADAMS COUNTY

COUNTY CORNER NO: 126  
ROMPORTOL ID: 41506330020

## PUBLIC LAND SURVEY MONUMENT RECORD

TYPE OF MONUMENT: HARRISON (BROKEN-TOP)  
ADAMS COUNTY COORDINATES, NAD 83 (2007)

N. 132899.374

E. 539256.615

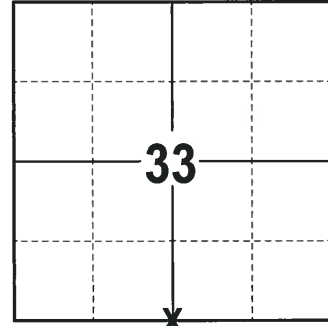
ELEVATION-      DATUM     

FIELD WORK DATE: 10/02/2017

### BASIS FOR MONUMENT LOCATION

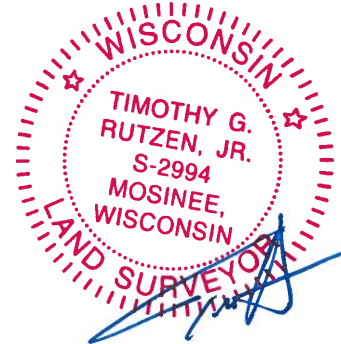
1977 - PLS 878 FOUND NO EVIDENCE OF THE MONUMENT. NO RESURVEYS ON RECORD. SET CORNER ON LINE EQUIDISTANT BETWEEN SECTION CORNERS AND TIED OUT.

2017 - PLS 2994 FOUND A HARRISON MONUMENT WITH A BROKEN-TOP 6" BELOW THE ROAD SURFACE AND 1 TIE. THE MONUMENT AGREES WITH THE EXISTING TIE. ACCEPTED THE HARRISON MONUMENT WITH BROKEN TOP AS THE CORNER LOCATION. SET 3 NEW TIES AND MEASURED TO THE TIES.



**LOCATION**  
(INDICATE CORNER BY "X")

SEAL:



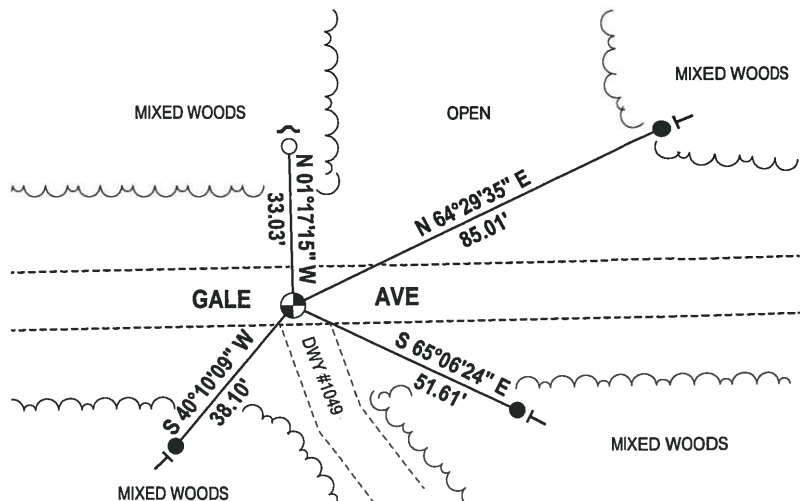
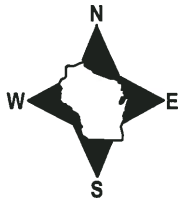
DATA SHOWN HERE ON THIS TIE SHEET IS CORRECT AND COMPLETE TO THE BEST OF MY KNOWLEDGE AND BELIEF.

PROFESSIONAL LAND SURVEYOR

DATE 11-15-17

### - TIE SKETCH -

NOTE: THE CORNER FALLS 3± SOUTH OF THE CENTERLINE OF GALE AVE.



- 3/4" x 18" IRON REBAR SET, 1.50#/FT
- 3/4" IRON ROD FOUND
- ⊙ HARRISON (BROKEN-TOP) FOUND
- ~ STEEL FENCE POST
- VINYL "T" POST

# Government Land Corner Certificate

ADAMS County

TYPE OF MONUMENT: \_\_\_\_\_

STATE PLANE COORDINATES: N \_\_\_\_\_  
E \_\_\_\_\_

ELEVATION — M.S.L. DATUM: \_\_\_\_\_

THETA ANGLE: \_\_\_\_\_

FIELD BOOK: 57 PAGE 24

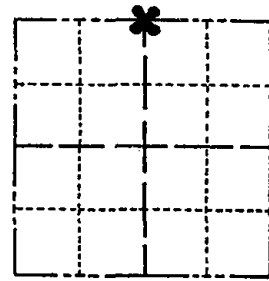
DRAWN BY: SCOTT SORENSEN

CORNER NO. 6

SECTION 4

TOWN 14

RANGE 6



LOCATION  
(Indicated by 'X')

SEAL:



DATA SHOWN HERE ON  
CERTIFIED CORRECT:

*Anthony B. Kiedrowski*  
Registered Land Surveyor

DATE: 9/16/77

## BASIS FOR MONUMENT LOCATION

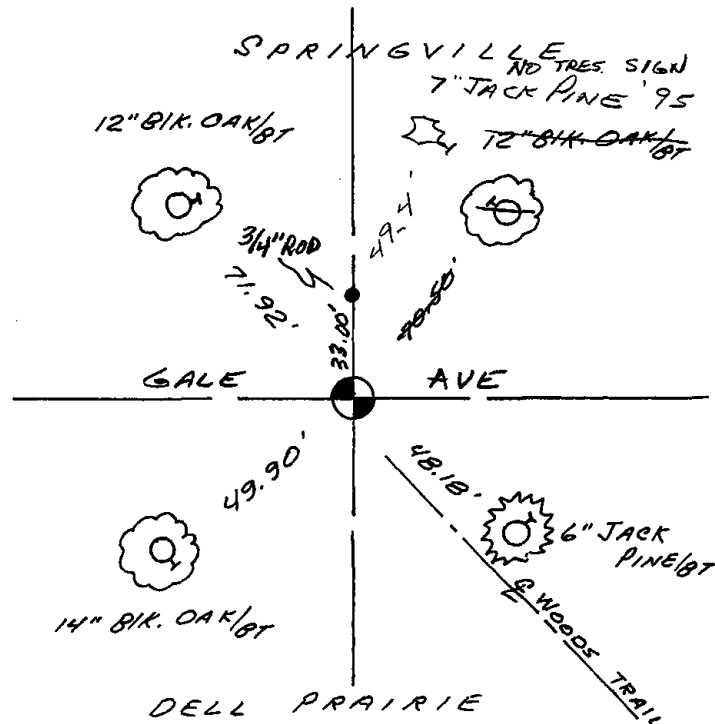
Show info such as: History of corner, with reference to Vol. and pg., dates, surveyor; exact description of monument replaced; if location computed, by taped or EDM traverse; landowner remarks, etc. (Use reverse side if necessary)

Could find no evidence of monument. No resurveys on record. Set corner on line equidistant between section corners.

## TIE SKETCH

Show at least four ties, also fence lines, roads, topo, size and type of witness trees' and if off road - best way to arrive at corner.

Ties to nail and bottle cap.



## MAINTENANCE RECORD

Date	Init.	Remarks
10/12/81	TH-LC	MON. & TIES O.K.
3-5-86	GR-SS	" " OK
10/29/90	JG	" " OK
12-6-95	JG SS	1 NEW TIE
3-20-01	JG	1-NEW TIE
10-30-06	JG	DK

