

33 SECTION 15 TOWN 06 RANGE

ADAMS COUNTY

COUNTY CORNER NO: 127
ROMPORTOL ID: 41506330000

PUBLIC LAND SURVEY MONUMENT RECORD

TYPE OF MONUMENT: HARRISON
ADAMS COUNTY COORDINATES, NAD 83 (2007)

N. 132906.046

E. 541880.982

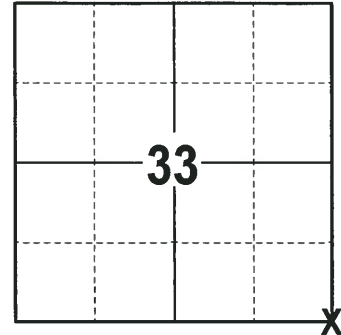
ELEVATION- - - DATUM - -

FIELD WORK DATE: 10/02/2017

BASIS FOR MONUMENT LOCATION

1975 - PLS 922 FOUND A 3/4"X24" IRON ROD SET BY DEAN JESSE 2' SOUTH OF A HALF GRADED ROAD. CORNER FIT TRANSIT TAPE TRAVERSE OF THE SECTION GOOD. SET 30" HARRISON MONUMENT AT THE CORNER LOCATION AND TIED OUT.

2017 - PLS 2994 FOUND A HARRISON MONUMENT FLUSH WITH THE GROUND, 1 TIE AND 1 PROPERTY IRON USED AS TIE. THE MONUMENT AGREES WITH THE EXISTING TIE AND PROPERTY IRON. ACCEPTED THE HARRISON MONUMENT THE CORNER LOCATION. SET 3 NEW TIES AND MEASURED TO THE TIES AND PROPERTY IRON.



LOCATION
(INDICATE CORNER BY "X")

SEAL:



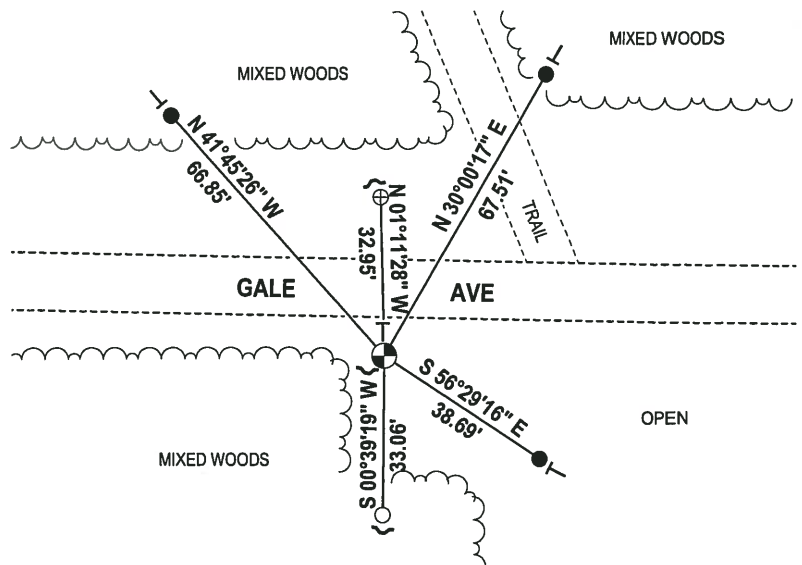
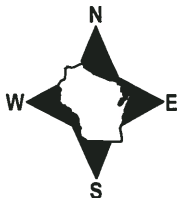
DATA SHOWN HERE ON THIS TIE SHEET IS CORRECT AND COMPLETE TO THE BEST OF MY KNOWLEDGE AND BELIEF.

PROFESSIONAL LAND SURVEYOR

DATE 11-15-17

- TIE SKETCH -

NOTE: THE CORNER FALLS 14± SOUTH OF THE CENTERLINE OF GALE AVE.



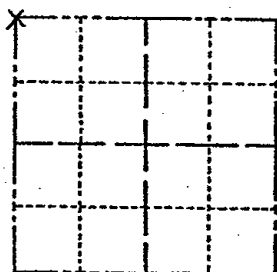
- 3/4" x 18" IRON REBAR SET, 1.50#/FT
- 3/4" IRON ROD W/CAP FOUND
- ⊕ 3/4" IRON ROD FOUND
- ⊙ HARRISON FOUND
- ✓ STEEL FENCE POST
- └ VINYL "T" POST

ADAMS COUNTY

Survey Monument Record

TYPE OF MONUMENT: 30" HARRISON
STATE PLANE COORDINATES: N
E
ELEVATION - M.S.L. DATUM:
THETA ANGLE:
FIELD BOOK: PAGE

CORNER NO. 738
SECTION 3
TOWN 14-N
RANGE 6-E



LOCATION (Indicated by 'X')

SEAL:

BASIS FOR MONUMENT LOCATION

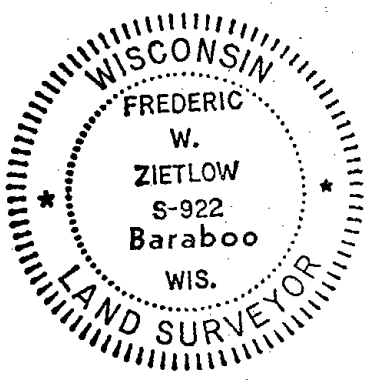
(Use reverse side if necessary)

Show info such as: History of corner, with reference to Vol. and pg, dates, surveyor; exact description of monument replaced; if location computed, by taped or EDM traverse; landowner remarks, etc.

FOUND 3/4" x 24" IRON ROD SET BY DEAN JESSE 2' SOUTH OF HALF GRADED ROAD FIT TRANSIT TAPE TRAVERSE OF SECTION GOOD

CORNER, O.K. 10-14-76 JS-SS
MAN + TIES OK 10-12-81 TH. LC
" " " 3-5-93 GR SS
" " " 10/29/90 JG

COR. OK 12/6/95 JG-SS
SEE ATTACHED SHEET, BRENNEMAN, 8-26-99
2-20-01 - JG - 2-NEW TIES
2-GONE, 4-LEFT, 10-30-06 - JG



CERTIFIED CORRECT:

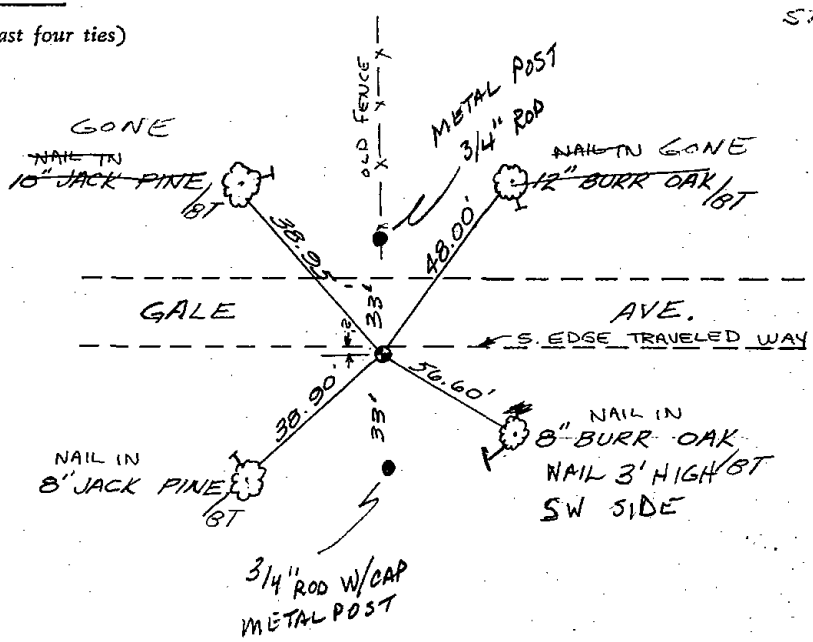
Frederic W. Zietlow

Registered Land Surveyor

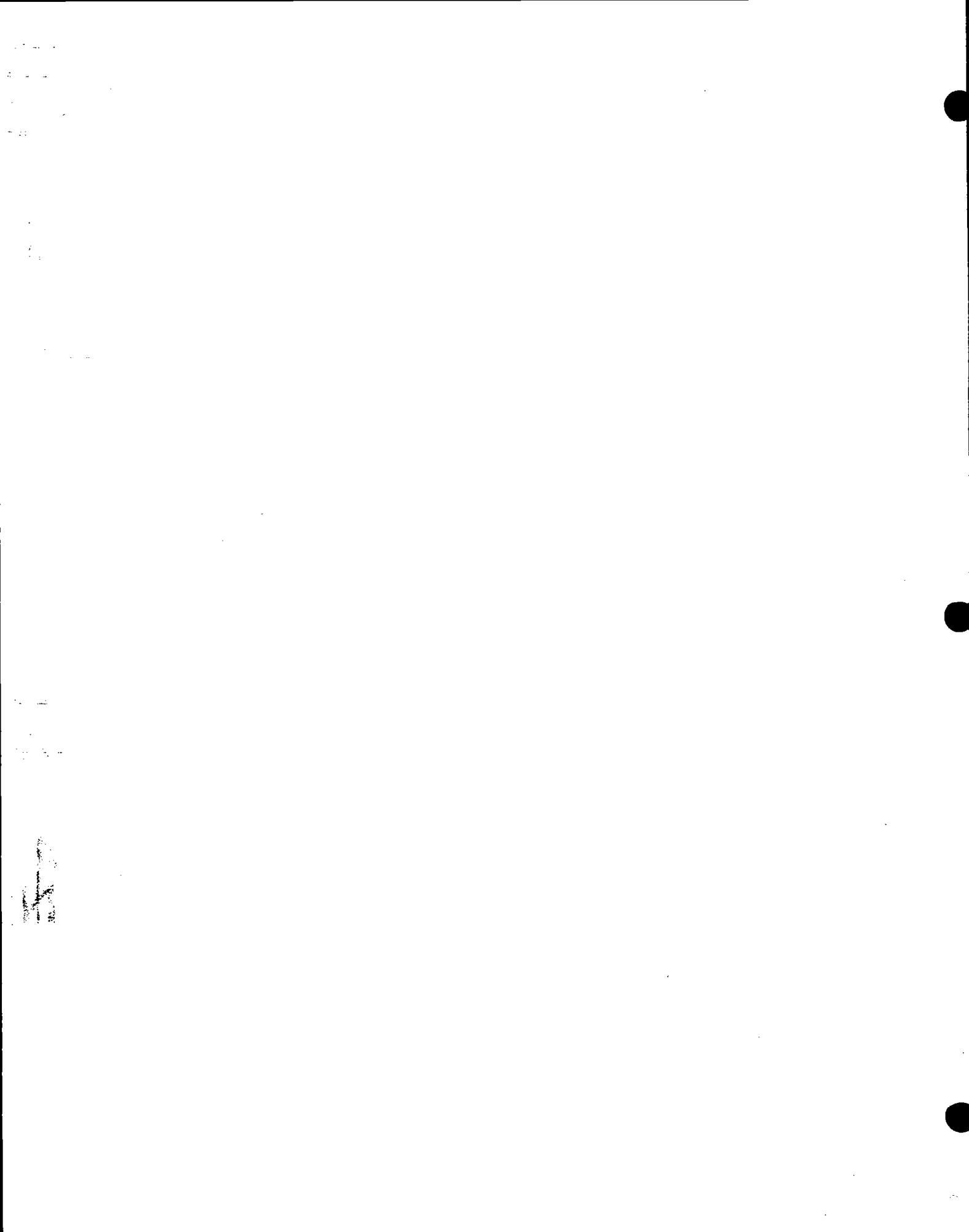
DATE: JULY 31, 1975

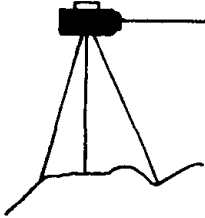
TIE SKETCH

(Show at least four ties)



STEEL POST SIGN





BRENEMAN'S BLUFFVIEW LAND SURVEYING SERVICES



E 12865 C. T. H. W
BARABOO, WISCONSIN, 53913
PHONE 608-356-8780

Also NE Cor Sec 4-14-6

I hereby certify that I have found the cast iron Harrison monument, and ties, representing the S.E. corner, of Section 33, Township 15 North, Range 6 East, Town of Springville, County of Adams, State of Wisconsin, as established by Frederic W. Zietlow, dated 7-31-1975, and all points are still intact.


JOHN A. BRENEMAN - R.L.S #1274

08-26-1999
Date

