

36 SECTION    15 TOWN    06 RANGE

# ADAMS COUNTY

COUNTY CORNER NO: 132  
ROMPORTOL ID: 41506360020

## PUBLIC LAND SURVEY MONUMENT RECORD

TYPE OF MONUMENT: HARRISON  
ADAMS COUNTY COORDINATES, NAD 83 (2007)

N. 132902.703

E. 555029.252

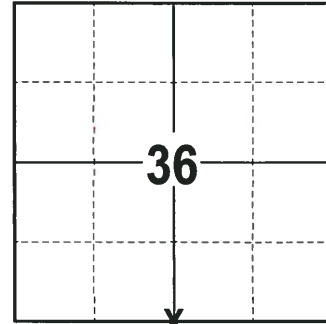
ELEVATION-      -      -      DATUM      -      -     

FIELD WORK DATE: 10/02/2017

### BASIS FOR MONUMENT LOCATION

1976 - PLS 922 RESEARCHED ADAMS COUNTY SURVEY RECORDS AND FOUND NO RESURVEYS PERTAINING TO THIS CORNER ON FILE. TONY KIEDROWSKI EXCAVATED AT THIS LOCATION AND FOUND NOTHING. SET THIS CORNER BY SINGLE PROPORTIONATE METHOD. FIT OCCUPATION GOOD WITH E.D.M TRAVERSE. SET A 30" HARRISON MONUMENT AT THE CORNER LOCATION AND TIED OUT.

2017 - PLS 2994 FOUND A HARRISON MONUMENT 4" BELOW THE ROAD SURFACE AND 2 WITNESSES. THE MONUMENT AGREES WITH THE EXISTING WITNESSES. ACCEPTED THE HARRISON MONUMENT AS THE CORNER LOCATION. SET 4 NEW TIES AND MEASURED TO THE TIES AND WITNESSES.



**LOCATION**  
(INDICATE CORNER BY "X")

SEAL:



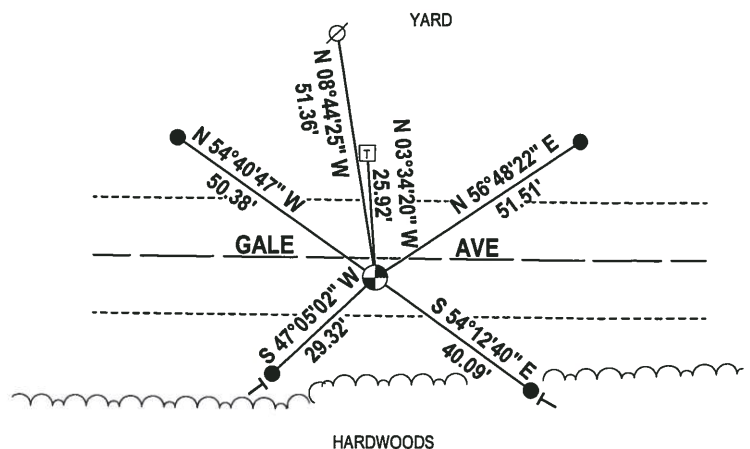
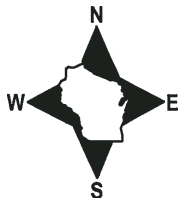
DATA SHOWN HERE ON THIS TIE SHEET IS CORRECT AND COMPLETE TO THE BEST OF MY KNOWLEDGE AND BELIEF.

PROFESSIONAL LAND SURVEYOR

DATE 11-15-17

### - TIE SKETCH -

NOTE: THE CORNER FALLS 4± SOUTH OF THE CENTERLINE OF GALE AVE.



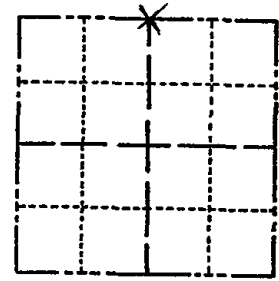
- 3/4" x 18" IRON REBAR SET, 1.50#/FT
- ⊕ HARRISON FOUND
- ⊗ WITNESS POWER POLE
- ☐ WITNESS TELEPHONE BOX (BOLT IN EAST SIDE)
- VINYL "T" POST
- ☼ WITNESS TREE FOUND

# ADAMS COUNTY

## Survey Monument Record

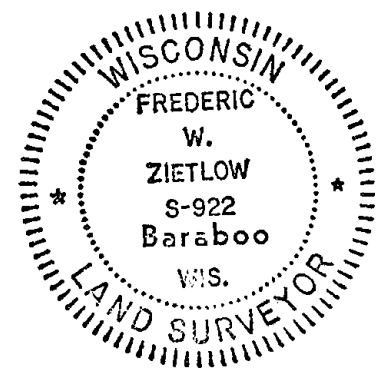
TYPE OF MONUMENT: 30" STANDARD HARRISON  
 STATE PLANE COORDINATES: N \_\_\_\_\_  
 E \_\_\_\_\_  
 ELEVATION — M.S.L. DATUM: \_\_\_\_\_  
 THETA ANGLE: \_\_\_\_\_  
 FIELD BOOK: \_\_\_\_\_ PAGE \_\_\_\_\_

CORNER NO. 12  
 SECTION 1  
 TOWN 14N  
 RANGE 6E



LOCATION  
(Indicated by 'X')

SEAL:



### BASIS FOR MONUMENT LOCATION

(Use reverse side if necessary)

Show info such as: History of corner, with reference to Vol. and pg, dates, surveyor; exact description of monument replaced; if location computed, by taped or EDM traverse; landowner remarks, etc.

RESEARCHED ADAMS COUNTY SURVEY RECORDS AND NO RESURVEYS PERTAINING TO THIS CORNER WERE ON FILE. TONY KIEDROWSKI EXCAVATED AT THIS LOCATION AND FOUND NOTHING. SET THIS CORNER BY SINGLE PROPORTIONATE METHOD. FIT OCCUPATION GOOD. E.D.M. TRAVERSE MON. + TIES O.K 10/12/81 TH-LC  
 " " " 2-6-86 GR-55  
 ALL OK 11-1-90 JG-53  
 1- NEW TIE, COR OK 12/6/95 JG-55  
 ALL OK. 3-5-01 MH-52  
 2-CONE, 2-NEW, MON. O.K., 10-30-06-JG

CERTIFIED CORRECT:

*Frederic W. Zietlow*  
 Registered Land Surveyor

DATE: 12-29-76

### TIE SKETCH

(Show at least four ties)

