

PUBLIC LAND SURVEY MONUMENT RECORD

TYPE OF MONUMENT: HARRISON
 ADAMS COUNTY COORDINATES, NAD 83 (2007)

N. 129078.527

E. 531277.676

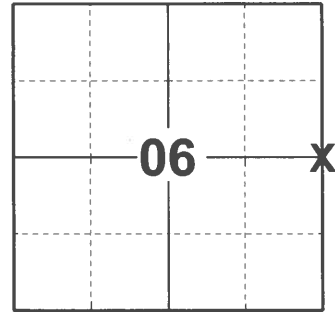
ELEVATION- _____ DATUM _____

FIELD WORK DATE: 12/16/2020

BASIS FOR MONUMENT LOCATION

1975 - PLS 1191 RESEARCHED OLD RECORDS FOUND NOTHING ON RECORD AS BEING SET BY ADAMS COUNTY SURVEYORS. FOUND 1" IRON PIPE SET NOV. 29, 1966 BY DON MCCONAGHY, FILE 38-25-97 F.B. 336 PGS. 54 AND 55. FOUND OLD WAGON TONGUE BESIDE 1"X24" PIPE BURIED VERTICALLY BUT COULD NOT FIND ANY CALLS FOR PARTICULAR MONUMENT ON RECORD. SET HARRISON AT LOCATION OF 1" DIAMETER PIPE. CORNER ESTABLISHED BY BOTH EDM AND TAPED TRAVERSES

2020 - PLS 2675 FOUND HARRISON 6" BELOW THE GROUND, 1 TIE, AND 1 WITNESS. THE MONUMENT AGREES WITH THE SECTION TIE TO THE NORTHEAST CORNER OF SECTION 6 AND THE WITNESS. ACCEPTED THE HARRISON AS THE CORNER LOCATION. SET 3 NEW TIES AND MEASURED TO A FOUND WISDOT R/W IRON, THE EXISTING TIE, AND WITNESS.



LOCATION
 (INDICATE CORNER BY "X")

SEAL:



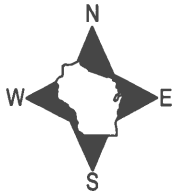
DATA SHOWN HERE ON THIS TIE SHEET IS CORRECT AND COMPLETE TO THE BEST OF MY KNOWLEDGE AND BELIEF.

PROFESSIONAL LAND SURVEYOR

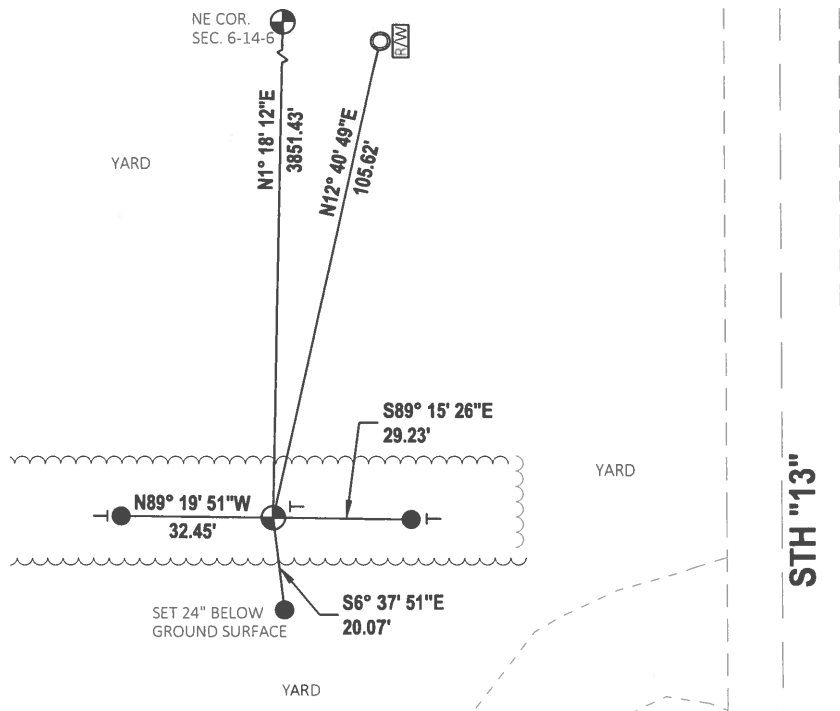
DATE 1/18/2021

TIE SKETCH

NOTE: CORNER LANDS 109± WEST OF CENTERLINE OF STH "13"



- SET 3/4" x 18" IRON REBAR, 1.50#/FT
- FOUND 1-1/4" O.D. IRON PIPE
- ⊕ FOUND HARRISON MONUMENT
- VINYL "T" POST
- R/W RIGHT OF WAY POST

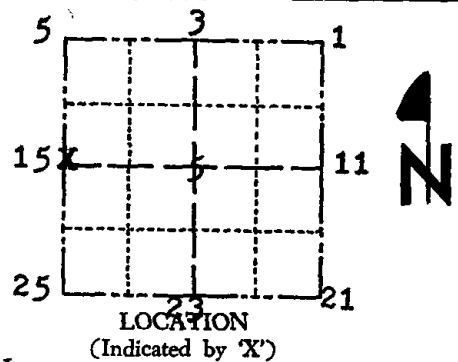


ADAMS COUNTY

Survey Monument Record

TYPE OF MONUMENT: Harrison
 STATE PLANE COORDINATES: N _____
 E _____
 ELEVATION — M.S.L. DATUM: _____
 THETA ANGLE: _____
 FIELD BOOK: 501 PAGE 18

CORNER NO. 855
 SECTION 5
 TOWN 14N
 RANGE 6E



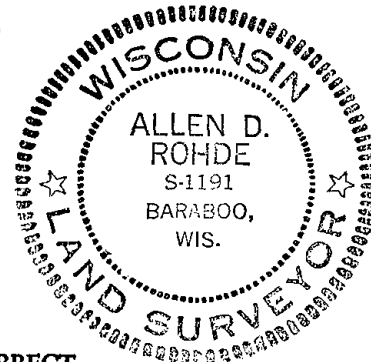
SEAL:

BASIS FOR MONUMENT LOCATION

(Use reverse side if necessary)

Show info such as: History of corner, with reference to Vol. and pg, dates, surveyor; exact description of monument replaced; if location computed, by taped or EDM traverse; landowner remarks, etc.

Researched old records found nothing on record as being set by Adams County Surveyors. Found one inch iron pipe set Nov. 29, 1966 by Don McConaghy, file 38-25-97 F.B. 336 Pgs. 54 & 55 Found old wagon tongue beside one inch x twenty four inch pipe buried vertically but could not find any calls for particular monument on record. Set Harrison at location of one inch diameter pipe. Corner established by both EDM & taped traverses



CORNER O.K. 3-31-76 GR-SS OK 11-1-90 JG-SS
 CORNER O.K. 12/22/81 DW-SK
 " " 2/6/86 GR-SS

ALL OK 3-5-01 M.H.
 ALLOK 10-30-06 - JG
 OK 7-5-11 SS 13th AVE. asphalt

HARRISON
 N.W. COR.
 SEC. 5-14-6

CERTIFIED CORRECT:

Allen D. Rohde
 Registered Land Surveyor

DATE: 12-12-25

TIE SKETCH

(Show at least four ties)

SEE C.S.M'S BY K.S.T.

