

## PUBLIC LAND SURVEY MONUMENT RECORD

TYPE OF MONUMENT: HARRISON  
ADAMS COUNTY COORDINATES, NAD 83 (2007)

N. 129124.981  
E. 536571.760

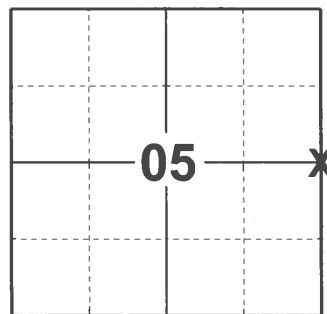
ELEVATION- \_\_\_\_\_ DATUM \_\_\_\_\_

FIELD WORK DATE: 12/16/2020

### BASIS FOR MONUMENT LOCATION

1975 - PLS 1191 RESEARCHED COUNTY RECORDS, FOUND SURVEY MADE BY M.C. SMITH IN 1917 OF THE SE1/4 SE1/4 SECTION 5. FOUND STONE ON RECORD AS BEING SET AT THE E1/4 CORNER BY M.C. SMITH MARKED BY A BEARING TREE BURR OAK 12" S60°Q 84.5 LINKS. FOUND ORIGINAL BEARING TREE NOW 26" IN DIAMETER, BACKED IN RECORDED DISTANCE FROM BEARING TREE AND EXCAVATED FOR STONE. COULD NOT FIND STONE, EVIDENTLY STONE WAS REMOVED WHEN ROAD WAS CONSTRUCTED. ESTABLISHED LOCATION OF MONUMENT BY USING M.C. SMITH'S DISTANCE AND BEARING, SAID CORNER FELL 2.70' EAST OF EXISTING RAILROAD SPIKE. MEASURED SOUTH TO VERIFY LOCATION OF MONUMENT. DISTANCE TO NORTH AND WEST ESTABLISHED FROM FAWN LAKE SURVEY. TAPE AND EDM TRAVERSE.

2020 -PLS 2675 FOUND HARRISON 4"± BELOW THE ROAD SURFACE AND 3 WITNESSES. THE MONUMENT AGREES WITH ALL 3 SLOPE DISTANCES TO WITNESSES. ACCEPTED THE HARRISON AS THE CORNER LOCATION. SET 4 NEW TIES AND MEASURED TO THE EXISTING WITNESSES.



LOCATION  
(INDICATE CORNER BY "X")

SEAL:



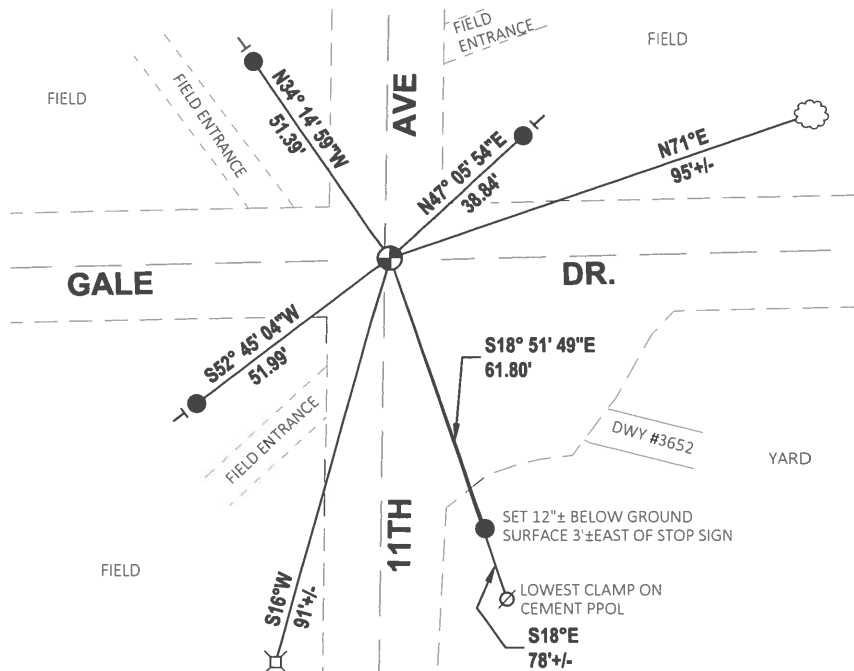
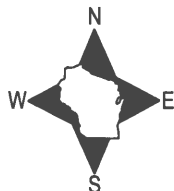
DATA SHOWN HERE ON THIS TIE SHEET IS CORRECT AND COMPLETE TO THE BEST OF MY KNOWLEDGE AND BELIEF.

PROFESSIONAL LAND SURVEYOR

DATE 1/10/2021

### TIE SKETCH

NOTE: CORNER LANDS 3"± EAST OF CENTERLINE OF 11TH AVE AND 0.5"± NORTH OF CENTERLINE OF GALE DR.



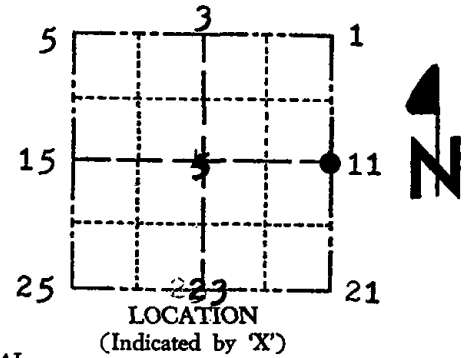
- SET 3/4" x 18" IRON REBAR, 1.50#/FT
- ⊕ FOUND HARRISON MONUMENT
- ∅ WITNESS POWER POLE
- ┆ VINYL "T" POST
- ⊙ WITNESS TREE
- ⊗ FRONT BOLT ON TPED

# ADAMS COUNTY

## Survey Monument Record

TYPE OF MONUMENT: Harrison  
 STATE PLANE COORDINATES: N \_\_\_\_\_  
 E \_\_\_\_\_  
 ELEVATION — M.S.L. DATUM: \_\_\_\_\_  
 THETA ANGLE: \_\_\_\_\_  
 FIELD BOOK: 501 PAGE 18

CORNER NO. 857  
 SECTION 5  
 TOWN 14N  
 RANGE 6E



### BASIS FOR MONUMENT LOCATION

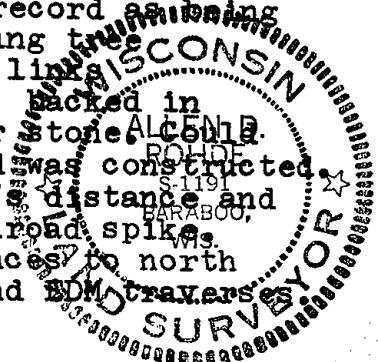
(Use reverse side if necessary)

Show info such as: History of corner, with reference to Vol. and pg, dates, surveyor; exact description of monument replaced; if location computed, by taped or EDM traverse; landowner remarks, etc.

SEAL:

Researched county records, found survey made by M.C. Smith in 1917 of the SE 1/4 SE 1/4 Sec. 5. Found stone on record as being set at the E 1/4 Cor. by M.C. Smith marked by a bearing tree.

Burr Oak 12" S60\*W 84.5 lins. Found original bearing tree now 26" in diameter, backed in recorded distance from bearing tree and excavated for stone. Stone not find stone, evidently stone was removed when road was constructed. Established location of monument by using M.C. Smith's distance and bearing, said corner fell 2.70' east of existing railroad spike. Measured south to varify location of monument. Distances to north and west established from Fawn Lake survey. Taped and EDM traverses.



CORNER O.K. - New ties 3-1-76 GR-SS  
 CORNER OK 12/22/81 SK-DW  
 " " 2/6/86 GR-SS  
 " " 11-1-90 JG-SS  
 " " 12/6/95 JG-SS  
 " " 3-5-01 MH-SA

CERTIFIED CORRECT:

Registered Land Surveyor

DATE: 12-26-75

### TIE SKETCH 4-NEW TIES 11-27-06 - JG-SS

(Show at least four ties)

