

02  
SECTION

14  
TOWN

06  
RANGE

# ADAMS COUNTY

COUNTY CORNER NO: 19  
ROMPORTOL ID: 41406022000

## PUBLIC LAND SURVEY MONUMENT RECORD

TYPE OF MONUMENT: HARRISON  
ADAMS COUNTY COORDINATES, NAD 83 (2007)

N. 129640.891

E. 552367.480

ELEVATION- \_\_\_\_\_ DATUM \_\_\_\_\_

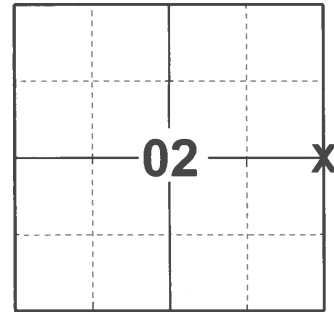
FIELD WORK DATE: 12/14/2020

### BASIS FOR MONUMENT LOCATION

1974 - PLS 878 FOUND A POINTED SANDSTONE, LOWERED THE STONE, AND SET A HARRISON MONUMENT ABOVE THE STONE.

2014 - PLS 2443 FOUND HARRISON CAST IRON MONUMENT. ESTABLISHED REFERENCE TIES TO PERPETUATE THE CORNER LOCATION.

2020 - 2675 FOUND HARRISON 4"± BELOW THE ROAD SURFACE, 3 TIES, AND 1 WITNESS. THE MONUMENT AGREES WITH ALL 3 TIES AND WITNESS. ACCEPTED THE HARRISON AS THE CORNER LOCATION. SET 1 NEW TIE, MEASURED TO THE EXISTING TIES AND WITNESS.



LOCATION  
(INDICATE CORNER BY "X")

SEAL:



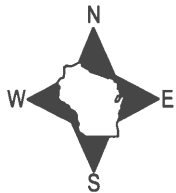
DATA SHOWN HERE ON THIS TIE SHEET IS CORRECT AND COMPLETE TO THE BEST OF MY KNOWLEDGE AND BELIEF.

PROFESSIONAL LAND SURVEYOR

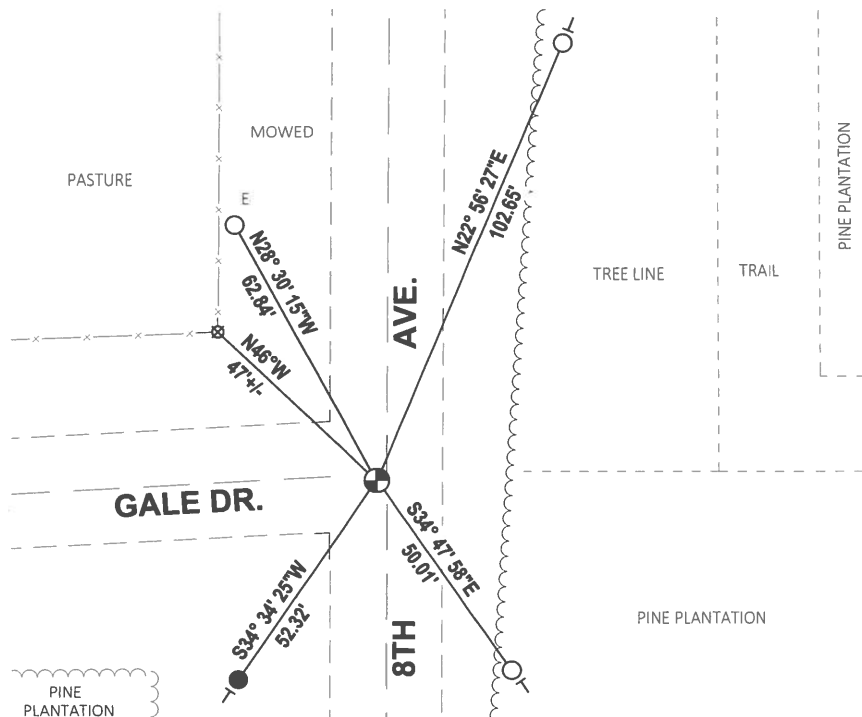
DATE 1/10/2021

### TIE SKETCH

NOTE: THE CORNER LANDS 2'± WEST OF CENTERLINE OF 8TH AVE.



- SET 3/4" x 18" IRON REBAR, 1.50#/FT
- FOUND 3/4" IRON ROD
- ⊠ FOUND STEEL "I" BEAM FENCE CORNER
- ⊙ FOUND HARRISON MONUMENT
- E ELECTRIC BOX
- VINYL "T" POST



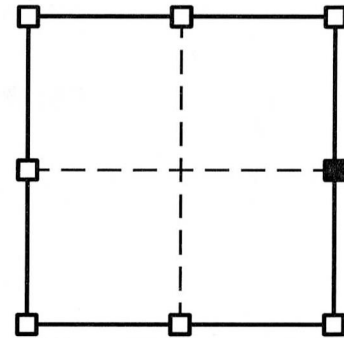
# ADAMS COUNTY SURVEY MONUMENT RECORD

TYPE OF MONUMENT: STD. HARRISON CAST IRON  
 ADAMS COUNTY COORDINATES: N = 129,640.92'  
 E = 552,367.52'

DATUM: NAD '83/2007 ADJ.-GPS AND CONVENTIONAL CONTROL

WITNESSES TO CORNER LOCATION: TODD T. RUMMLER, MARK A. MAHONEY

CORNER No. 398  
 SECTION 2  
 TOWN 14N  
 RANGE 6E



■ = CORNER LOCATION

AFFIX LAND SURVEYOR SEAL



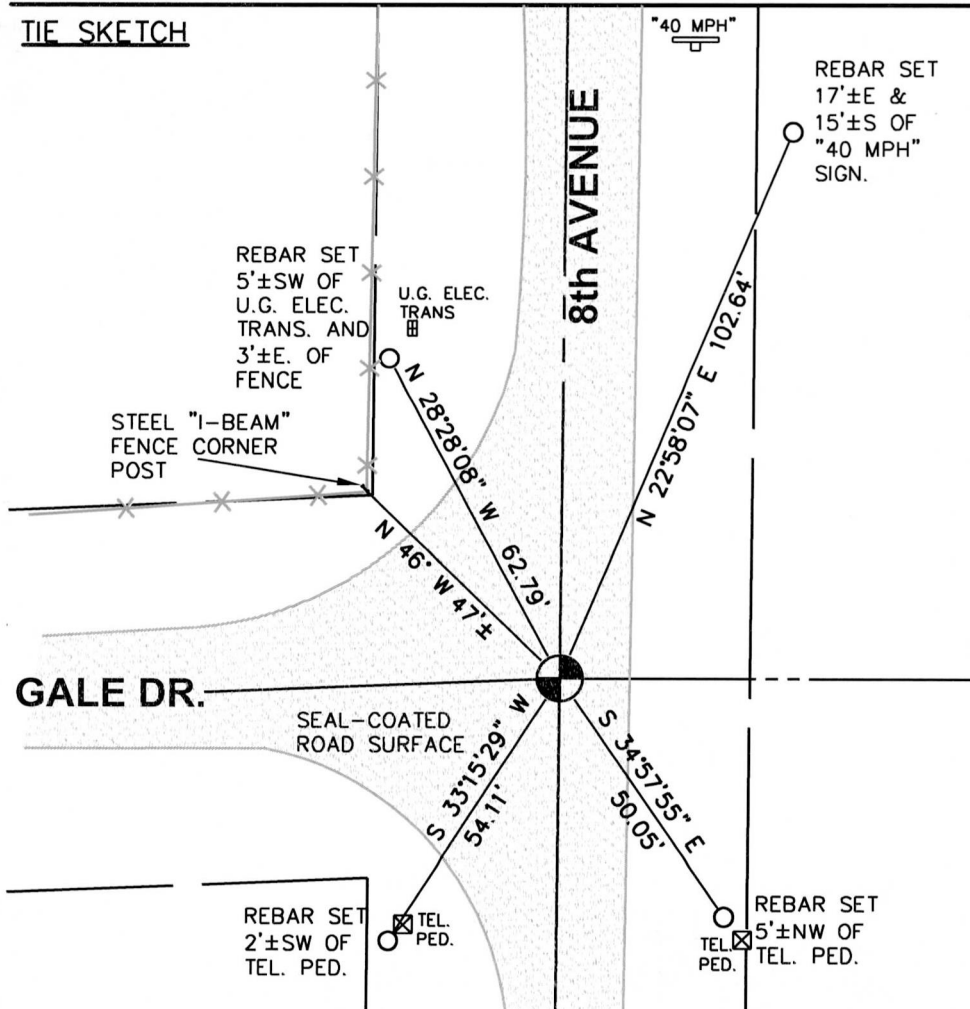
*Todd T. Rummeler*  
 7/1/14

## BASIS FOR MONUMENT LOCATION

SHOW INFO SUCH AS: HISTORY OF CORNER, WITH REFERENCE TO VOL. AND PG., DATES, SURVEYOR; EXACT DESCRIPTION OF MONUMENT REPLACED; IF LOCATION COMPUTED, BY TAPED OR EDM TRAVERSE; LANDOWNER REMARKS, ETC.




THE LAST TIE SHEET ON FILE FOR THIS CORNER IS DATED JUNE 12, 1974 BY ANTHONY B. KIEDROWSKI, R.L.S. 878. KIEDROWSKI STATES HE FOUND A POINTED SANDSTONE, LOWERED THE STONE AND SET A HARRISON MONUMENT ABOVE THE STONE. NUMEROUS NOTATIONS BY OTHER SURVEYORS ALSO APPEAR ON THE TIE SHEET. I FOUND THE STANDARD HARRISON CAST IRON MONUMENT AS NOTED BY KIEDROWSKI AND ESTABLISHED REFERENCE TIES AS SHOWN BELOW TO PERPETUATE THE CORNER LOCATION.

## TIE SKETCH



I, TODD T. RUMMLER, PLS-2443 CERTIFY THAT THE CORNER LOCATION SHOWN ON THIS RECORD WAS DETERMINED BY ME OR UNDER MY DIRECTION AND CONTROL AND THAT THIS ADAMS COUNTY SURVEY MONUMENT RECORD IS CORRECT AND COMPLETE TO THE BEST OF MY KNOWLEDGE AND BELIEF.

## LEGEND

-  FOUND STD. HARRISON CAST IRON MONUMENT - E1/4 CORNER SECTION 2, T14N, R6E
-  SET 3/4"Ø X 24" LONG REBAR WT. = 1.502 LBS./LN.FT.
-  WIRE PANEL FENCE



NOT TO SCALE