

06
SECTION

14
TOWN

06
RANGE

ADAMS COUNTY

COUNTY CORNER NO: 22

ROMPORTOL ID: 41406060020

PUBLIC LAND SURVEY MONUMENT RECORD

TYPE OF MONUMENT: HARRISON
ADAMS COUNTY COORDINATES, NAD 83 (2007)

N. 126423.540

E. 528590.803

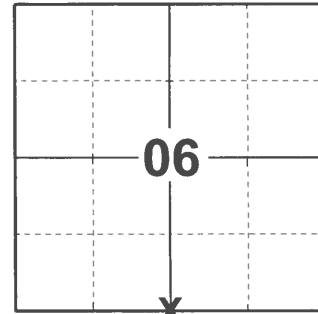
ELEVATION- DATUM

FIELD WORK DATE: 12/17/2020

BASIS FOR MONUMENT LOCATION

1977 - PLS 1103 RAN EDM-T2 TRAVERSE AROUND SECTION 6 AND TO PORTIONS OF ADJOINING SECTIONS TO DETERMINE SEARCH AREA FOR INVESTIGATION. SEARCH REVEALED NO TRACE OF THE ORIGINAL CORNER OR ANY REMONUMENTATION. (NO REMONUMENTATION OF RECORD) RELOCATED CORNER BY GOING RECORD DISTANCE FROM SOUTHEAST CORNER OF SECTION 6 AND PARALLEL TO INDIAN SHORES SUBDIVISION TO THE SOUTH. THIS LOCATION FITS OCCUPATION WELL AS NOTED IN THE SKETCH.

2020 - PLS 2675 FOUND HARRISON 4" ABOVE THE GROUND AND 3 WITNESS TREES. THE MONUMENT AGREES WITH ALL 3 WITNESS TREES. ACCEPTED THE HARRISON AS THE CORNER LOCATION. SET 4 NEW TIES, MEASURED THE FOUND MEANDER CORNER, AND THE EXISTING WITNESS TREES.



LOCATION

(INDICATE CORNER BY "X")

SEAL:

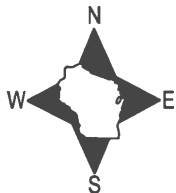


DATA SHOWN HERE ON THIS TIE SHEET IS CORRECT AND COMPLETE TO THE BEST OF MY KNOWLEDGE AND BELIEF.

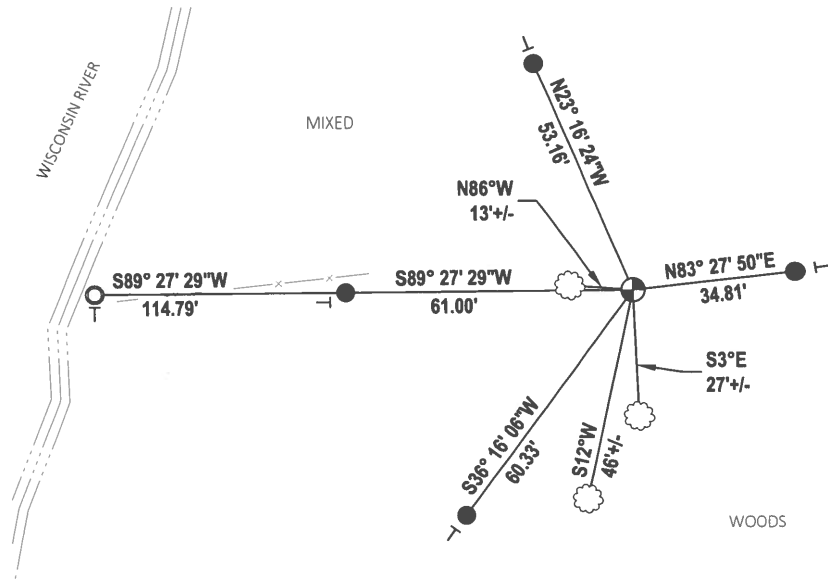
PROFESSIONAL LAND SURVEYOR

DATE 1/18/2021

TIE SKETCH



- SET 3/4" x 18" IRON REBAR, 1.50#/FT
- FOUND M.C. 1-1/4" O.D. IRON PIPE
- ⊙ FOUND HARRISON MONUMENT
- ┊ VINYL "T" POST
- ⊗ WITNESS TREE

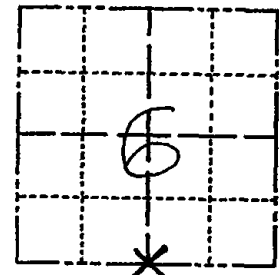


ADAMS COUNTY

CORNER NO. 22
SECTION 6
TOWN 14
RANGE 6

Survey Monument Record

TYPE OF MONUMENT: HARRISON STANDARD
STATE PLANE COORDINATES: N _____
E _____
ELEVATION — M.S.L. DATUM: _____
THETA ANGLE: _____
FIELD BOOK: 38 PAGE 32



BASIS FOR MONUMENT LOCATION

(Use reverse side if necessary)

Show info such as: History of corner, with reference to Vol. and pg, dates, surveyor; exact description of monument replaced; if location computed, by taped or EDM traverse; landowner remarks, etc.

Ran EDM-T2 traverse around Section 6 and to portions of adjoining sections to determine search area for investigation.

Search revealed no trace of the original corner or any remonumentation. (No remonumentation of record)

Relocated corner by going record distance from Southeast corner of Section 6 and parallel to Indian Shores subdivision to the South. This location fits occupation well as noted in the sketch.

Set Harrison 3-22-77.

ORDER OK 12-21-81 SK-DW
OK 3-18-85 J. PREHN S 7790
" 3-13-86 G.P. S.S.
" 3-25-91 GR-JG

CERTIFIED CORRECT:

Dale C. Hagen
Registered Land Surveyor
DATE: 5-31-77

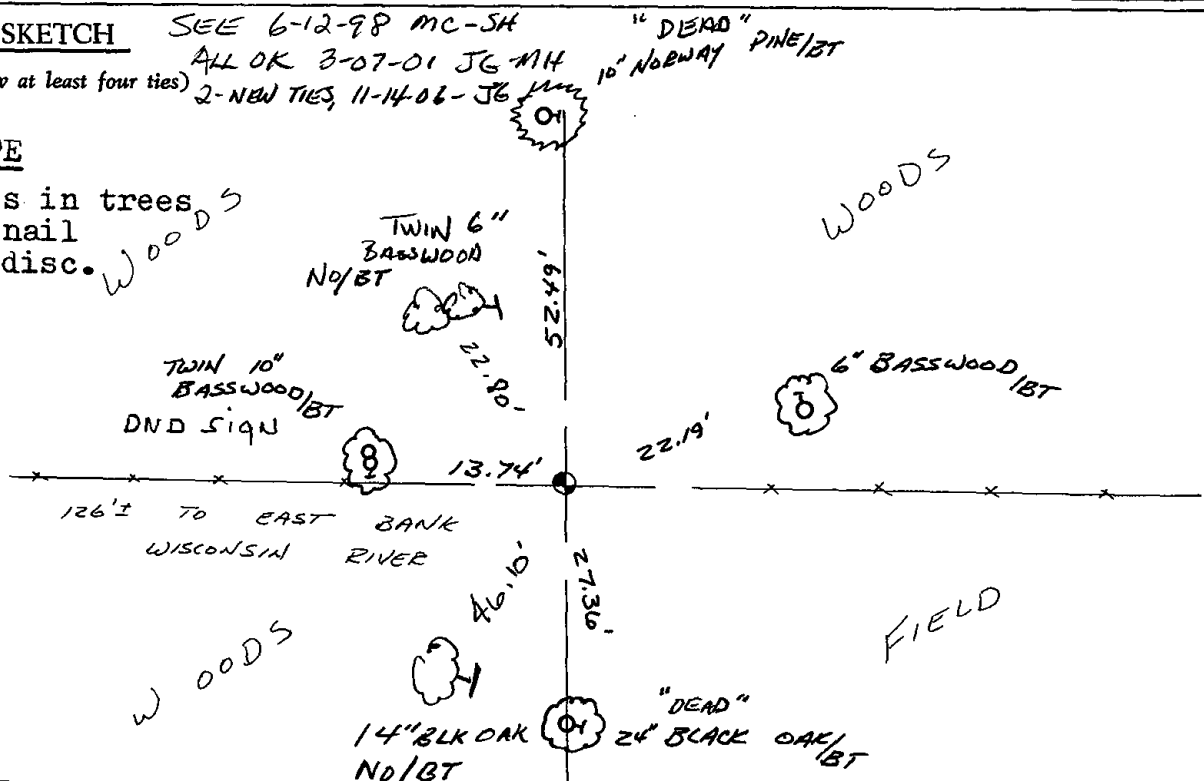


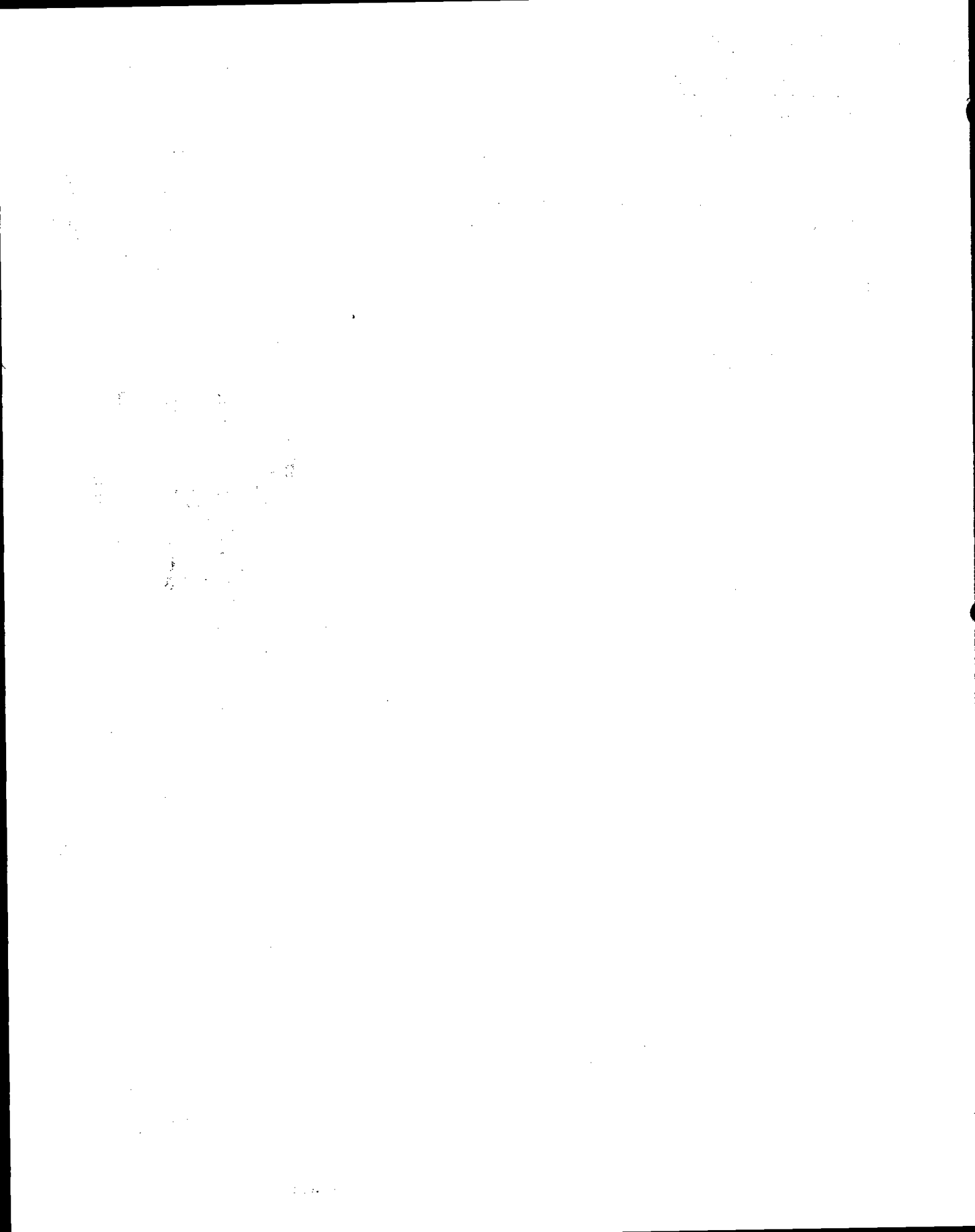
TIE SKETCH

SEE 6-12-98 MC-SH "DEAD" PINE/BT
ALL OK 3-07-01 JG MH 10' NORWAY PINE/BT
(Show at least four ties) 2-NEW TIES, 11-14-06-JG

NOTE

Ties in trees
no nail
in disc. WOODS



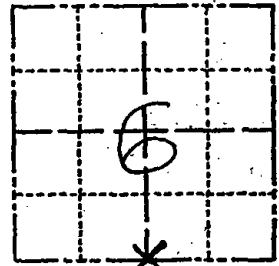


ADAMS COUNTY

Survey Monument Record

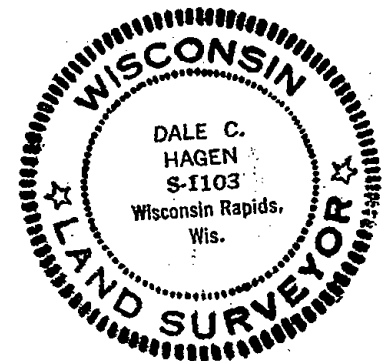
CORNER NO. 22
SECTION 6
TOWN 14
RANGE 6

TYPE OF MONUMENT: HARRISON STANDARD
STATE PLANE COORDINATES: N. _____
E. _____
ELEVATION - M.S.L. DATUM: _____
THETA ANGLE: _____
FIELD BOOK: 38 PAGE 32



LOCATION
(Indicated by 'X')

SEAL:



BASIS FOR MONUMENT LOCATION

(Use reverse side if necessary)

Show info such as: History of corner, with reference to Vol. and pg. dates, surveyor; exact description of monument replaced; if location computed, by taped or EDM traverse; landowner remarks, etc.

Ran EDM-T2 traverse around Section 6 and to portions of adjoining sections to determine search area for investigation.

Search revealed no trace of the original corner or any remonumentation. (No remonumentation of record)

Relocated corner by going record distance from Southeast corner of Section 6 and parallel to Indian Shores subdivision to the South. This location fits occupation well as noted in the sketch.

Set Harrison 3-22-77.

LORNER AK	12-21-81	SK-DW	
OK	3-18-85	J. PREHN	S 7790
"	3-13-85	GR-S S	
"	3-25-91	GR-JG	

CERTIFIED CORRECT:

Dale C. Hagen
Registered Land Surveyor
DATE: 5-31-77

TIE SKETCH " 6-12-98 MC-SH

(Show at least four ties)

NOTE

Ties in trees
no nail
in disc.

