

06
SECTION

14
TOWN

06
RANGE

ADAMS COUNTY

COUNTY CORNER NO: 23

ROMPORTOL ID: 41406060000

PUBLIC LAND SURVEY MONUMENT RECORD

TYPE OF MONUMENT: 1-1/4" O.D. IRON PIPE
ADAMS COUNTY COORDINATES, NAD 83 (2007)

N. 126443.976

E. 531230.678

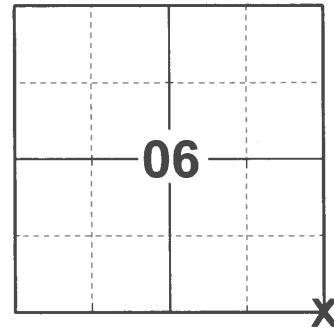
ELEVATION- _____ DATUM _____

FIELD WORK DATE: 12/16/2020

BASIS FOR MONUMENT LOCATION

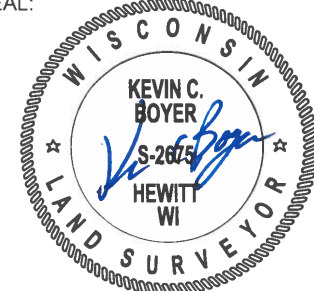
1979 - PLS 1478 FOUND 1-1/4" IRON PIPE THAT HAS BEEN USED IN NUMEROUS SURVEYS TO THE NORTH AND SOUTH. DISTANCE TO THIS PIPE VERY NEARLY MATCH TIES RECORDED BY A.J. BARRETT IN VOL. 2 PAGE 179 OF ADAMS COUNTY SURVEYOR'S OFFICE. THE PIPE WAS ACCEPTED AS THE CORNER AND REPLACED WITH A STANDARD HARRISON MONUMENT.

2020 - PLS 2675 FOUND A 1-1/4" O.D. IRON PIPE 4" ABOVE THE GROUND AND 3 TIES. THE MONUMENT AGREES WITH ALL 3 TIES. ACCEPTED THE 1-1/4" O.D. IRON PIPE AS THE CORNER LOCATION. SET 1 NEW TIE AND MEASURED TO THE EXISTING TIES.



LOCATION
(INDICATE CORNER BY "X")

SEAL:

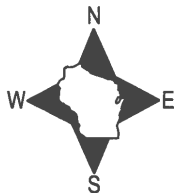


DATA SHOWN HERE ON THIS TIE SHEET IS CORRECT AND COMPLETE TO THE BEST OF MY KNOWLEDGE AND BELIEF.

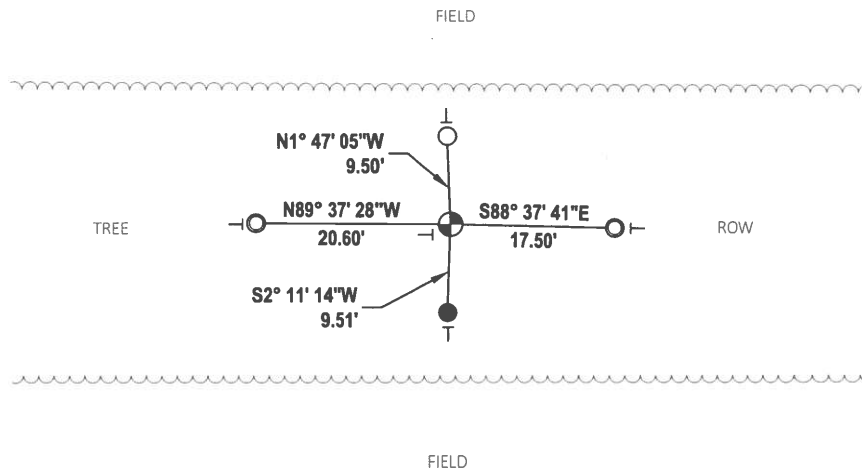
PROFESSIONAL LAND SURVEYOR

DATE 1/18/2021

- TIE SKETCH



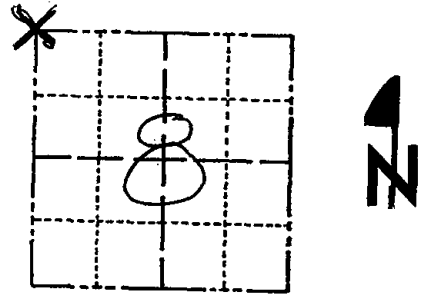
- SET 3/4" x 18" IRON REBAR, 1.50#/FT
- FOUND 3/4" IRON ROD
- FOUND 1-1/4" O.D. IRON PIPE
- ⊙ FOUND 1-1/4" O.D. IRON PIPE
- ⊣ VINYL "T" POST



Government Land Corner Certificate

Adams County
 TYPE OF MONUMENT: HARRISON 1 1/2" PIPE
 STATE PLANE COORDINATES: N _____
 E _____
 ELEVATION — M.S.L. DATUM: _____
 THETA ANGLE: _____
 FIELD BOOK: 76 PAGE 21
 DRAWN BY: G RHINEHART

CORNER NO. 23
 SECTION 8
 TOWN 14
 RANGE 6



LOCATION
 (Indicated by 'X')

BASIS FOR MONUMENT LOCATION

Show info such as: History of corner, with reference to Vol. and pg., dates, surveyor; exact description of monument replaced; if location computed, by taped or EDM traverse; landowner remarks, etc. (Use reverse side if necessary)

Found 1 1/4" iron pipe that has been used in numerous surveys to the north and south. Distances to this pipe very nearly match ties recorded by A.J. Barrett in Vol.2 page 179 of field books on Dec. 8, 1896 as filed in the Adams County Surveyor's office. The pipe was accepted as the corner and replaced with a standard Harrison mon.
 Note: The stump of the BT recorded as N86°W 16 lks. is on display in the Adams County Surveyor's office.

SEAL:



DATA SHOWN HERE ON CERTIFIED CORRECT:

Gregory P Rhinehart
 Registered Land Surveyor

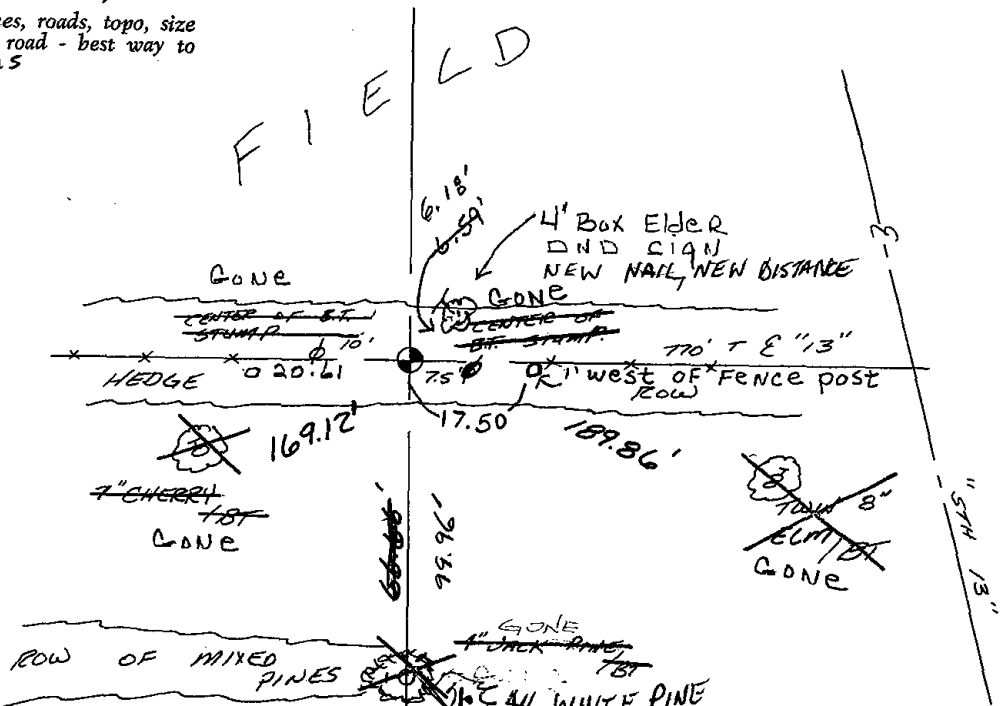
DATE: 12/13/79

SEE IACSR VOL 2 PAGE 45 ALSO
 1/2" pipe. NOT HARRISON 12-21-81 SK-DW GPR
 OK 2-18-86 GR-SS
 OK 3-25-91 - GR. JG
 COR OK 12/6/95 JG-SS

* SEE MCXSH 6-12-98
 TIE SKETCH ALL OK 3-07-01, JG-MH ALLOK, 11-14-06 - JG

Show at least four ties, also fence lines, roads, topo, size and type of witness trees and if off road - best way to arrive at corner. OK 12-19-11 MS

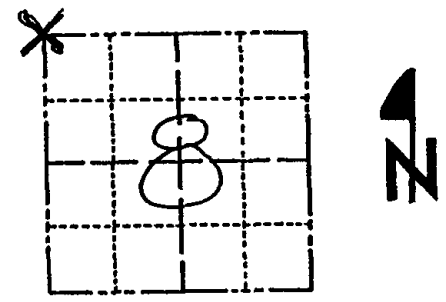
0 = 1" x 24" I.P.



Government Land Corner Certificate

Adams County
 TYPE OF MONUMENT: Harrison
 STATE PLANE COORDINATES: N _____
 E _____
 ELEVATION — M.S.L. DATUM: _____
 THETA ANGLE: _____
 FIELD BOOK: 76 PAGE 21
 DRAWN BY: G RHINEHART

CORNER NO. 23
 SECTION 8
 TOWN 14
 RANGE 6



LOCATION
 (Indicated by 'X')

SEAL:



DATA SHOWN HERE ON
 CERTIFIED CORRECT:

Gregory P Rhinehart
 Registered Land Surveyor

DATE: 12/13/75

BASIS FOR MONUMENT LOCATION

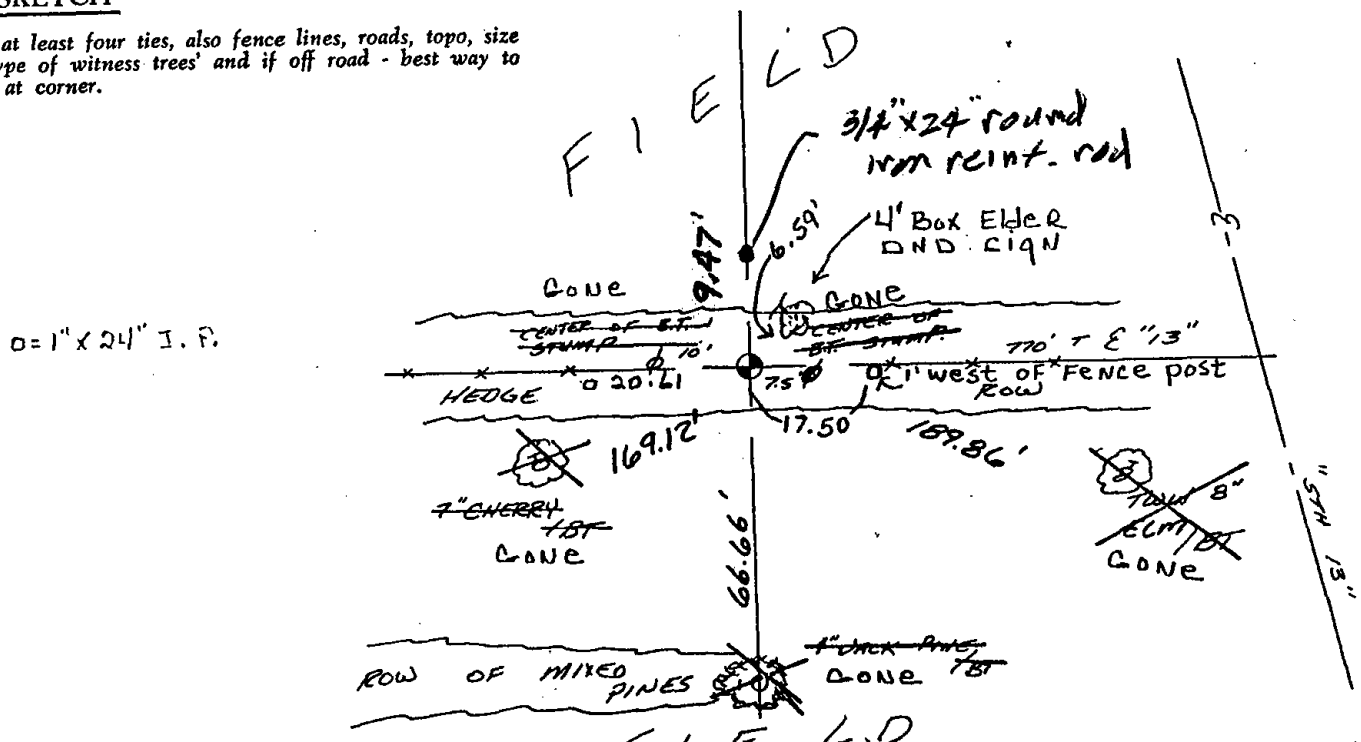
Show info such as: History of corner, with reference to Vol. and pg., dates, surveyor; exact description of monument replaced; if location computed, by taped or EDM traverse; landowner remarks, etc. (Use reverse side if necessary)

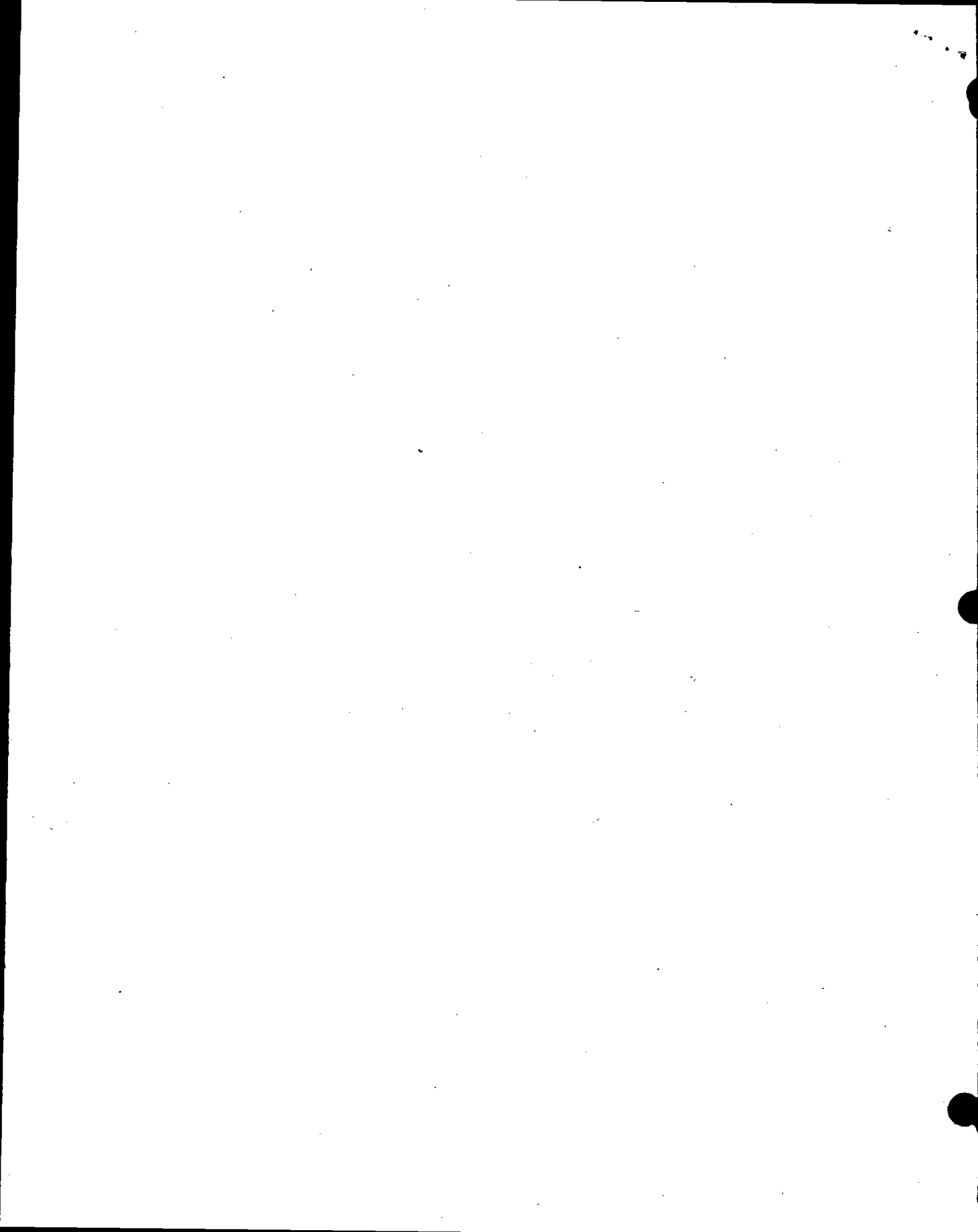
Found $1\frac{1}{4}$ " iron pipe that has been used in numerous surveys to the north and south. Distances to this pipe very nearly match ties recorded by A.J. Barrett in Vol.2 page 179 of field books on Dec. 8, 1896 as filed in the Adams County Surveyor's office. The pipe was accepted as the corner and replaced with a standard Harrison mon. Note: The stump of the BT recorded as N86°W 16 lks. is on display in the Adams County Surveyor's office.

SEE ACOR VOL 2 PAGE 45 ALSO
 $1\frac{1}{2}$ " pipe. Not HARRISON 10-21-81 SK-DW GPR
 OK 2-18-86 GR-SS
 Sept 30 '88 Ken Carlson

TIE SKETCH

Show at least four ties, also fence lines, roads, topo, size and type of witness trees and if off road - best way to arrive at corner.





Government Land Corner Certificate

Adams County

TYPE OF MONUMENT: Harrison

STATE PLANE COORDINATES: N _____

E _____

ELEVATION — M.S.L. DATUM: _____

THETA ANGLE: _____

FIELD BOOK: 76 PAGE 21

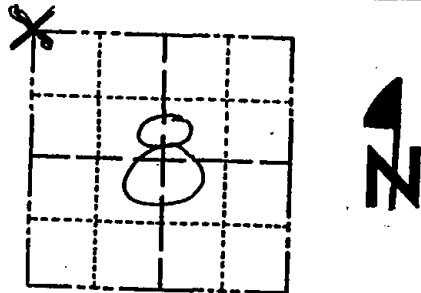
DRAWN BY: G RHINEHART

CORNER NO. 23

SECTION 8

TOWN 14

RANGE 6



LOCATION
(Indicated by 'X')

BASIS FOR MONUMENT LOCATION

Show info such as: History of corner, with reference to Vol. and pg., dates, surveyor; exact description of monument replaced; if location computed, by taped or EDM traverse; landowner remarks, etc. (Use reverse side if necessary)

Found 1 1/4" iron pipe that has been used in numerous surveys to the north and south. Distances to this pipe very nearly match ties recorded by A.J. Barrett in Vol.2 page 179 of field books on Dec. 8, 1896 as filed in the Adams County Surveyor's office.

The pipe was accepted as the corner and replaced with a standard Harrison mon.

Note: The stump of the BT recorded as N86°W 16 lks. is on display in the Adams County Surveyor's office.

SEAL:



DATA SHOWN HERE ON
CERTIFIED CORRECT:

Gregory P Rhinehart
Registered Land Surveyor

DATE: 12/13/79

SEE RCSR VOL 2 PAGE 45 ALSO

1/2" pipe. Not HARRISON 12-21-81 SK-DW GPR

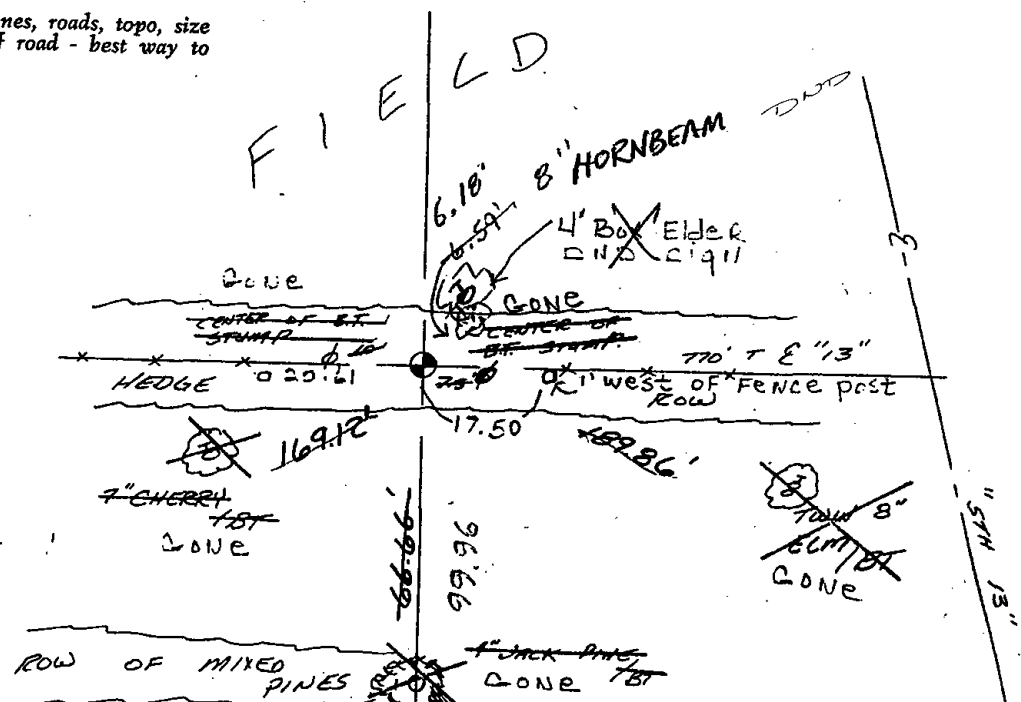
OK 2-18-86 GR-55

OK 3-25-91 - GR. 56

COR OK 12/6/95 56-55

New ties 6-12-98 MCFSH
TIE SKETCH

Show at least four ties, also fence lines, roads, topo, size and type of witness trees' and if off road - best way to arrive at corner.



0 = 1" x 24" E.F.

ROW OF MIXED PINES
4" JACK PINES
GONE TBT