

05
SECTION

14
TOWN

06
RANGE

ADAMS COUNTY

COUNTY CORNER NO: 24

ROMPORTOL ID: 41406050020

PUBLIC LAND SURVEY MONUMENT RECORD

TYPE OF MONUMENT: HARRISON
ADAMS COUNTY COORDINATES, NAD 83 (2007)

N. 126460.875

E. 533878.376

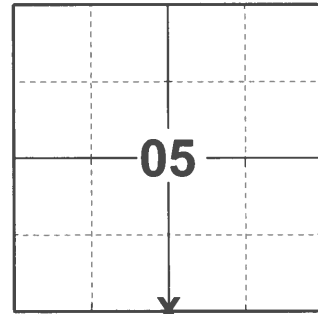
ELEVATION- DATUM

FIELD WORK DATE: 12/16/2020

BASIS FOR MONUMENT LOCATION

1975 - PLS 922 FOUND 1" IRON PIPE AT FENCE CORNER AND MONUMENTED SAME. CHECKED COUNTY SURVEY RECORDS AND DEAN JESSE HAD USED SAME MONUMENT IN PRIOR SURVEY. FIT TAPED TRAVERSE OF SECTION GOOD.

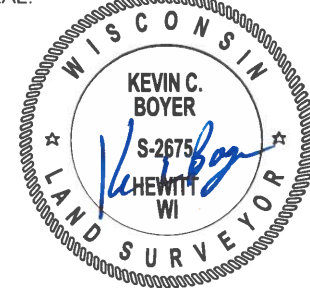
2020 - PLS FOUND HARRISON FLUSH WITH THE GROUND, 1 TIE, AND 3 WITNESSES. THE MONUMENT AGREES WITH THE TIE AND WITNESSES. ACCEPTED THE HARRISON AS THE CORNER LOCATION. SET 3 NEW TIES AND MEASURED TO THE EXISTING TIE AND WITNESSES.



LOCATION

(INDICATE CORNER BY "X")

SEAL:

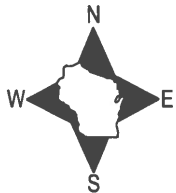


DATA SHOWN HERE ON THIS TIE SHEET IS CORRECT AND COMPLETE TO THE BEST OF MY KNOWLEDGE AND BELIEF.

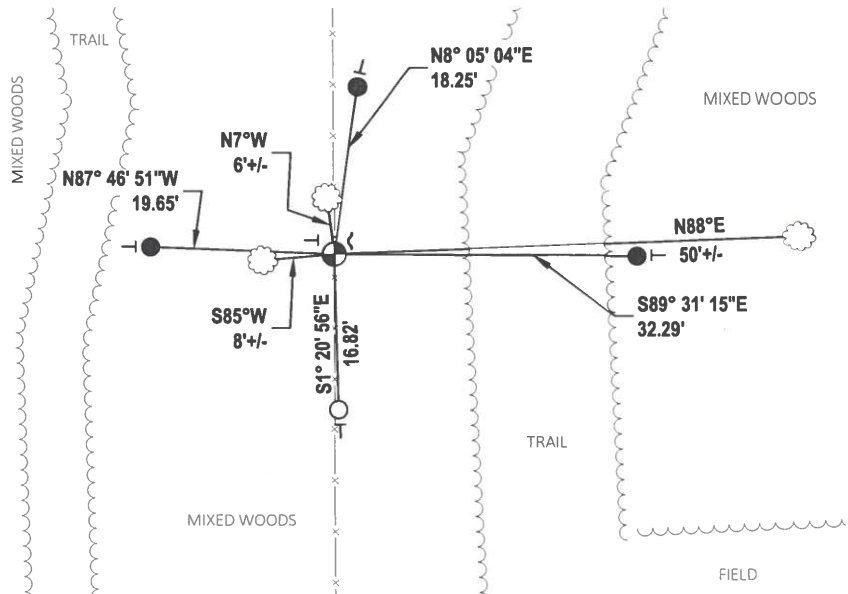
PROFESSIONAL LAND SURVEYOR

DATE 1/18/2021

- TIE SKETCH



- SET 3/4" x 18" IRON REBAR, 1.50#/FT
- FOUND 3/4" IRON ROD
- ⊕ FOUND HARRISON MONUMENT
- ┌ STEEL FENCE POST
- └ VINYL "T" POST
- ⊗ WITNESS TREE

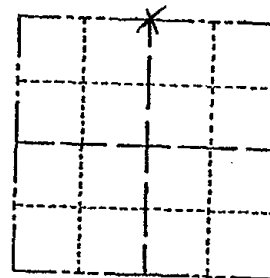


ADAMS COUNTY

Survey Monument Record

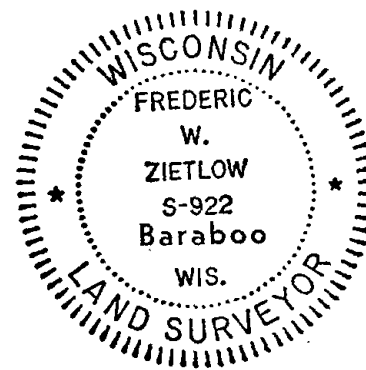
TYPE OF MONUMENT: 30" HARRISON
 STATE PLANE COORDINATES: N _____
 E _____
 ELEVATION — M.S.L. DATUM: _____
 THETA ANGLE: _____
 FIELD BOOK: _____ PAGE _____

CORNER NO. 733
 SECTION 8
 TOWN 14N
 RANGE 6E



LOCATION
 (Indicated by 'X')

SEAL:



CERTIFIED CORRECT:

Frederic W. Zietlow

Registered Land Surveyor

DATE: July 31, 1975

BASIS FOR MONUMENT LOCATION

(Use reverse side if necessary)

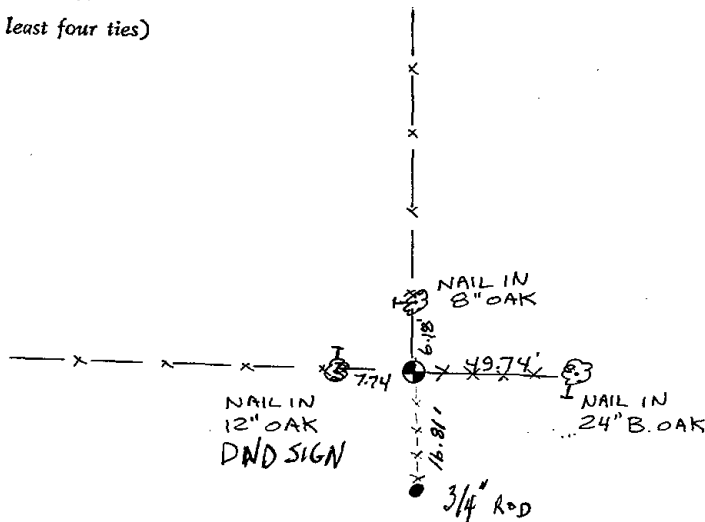
Show info such as: History of corner, with reference to Vol. and pg. dates, surveyor; exact description of monument replaced; if location computed, by taped or EDM traverse; landowner remarks, etc.

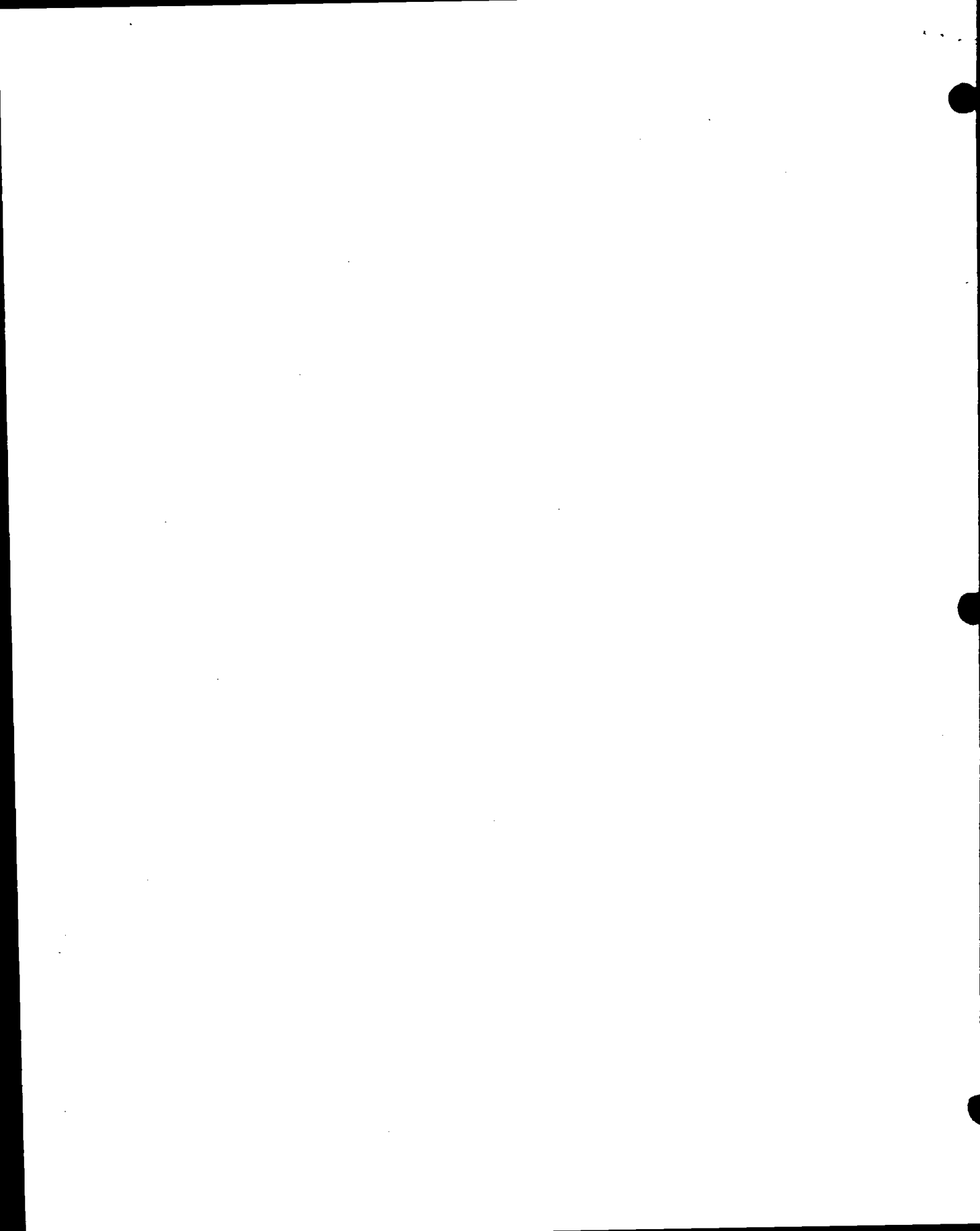
FOUND 1" IRON PIPE AT FENCE CORNER AND MONUMENTED SAME. CHECKED CO. SURVEY RECORDS & DEAN JESSE HAD USED SAME MONUMENT IN PRIOR SURVEY. FIT TAPED TRAVERSE OF SECTION GOOD

CORNER O.K.	3-31-76	GRSS
CORNER O.K.	12-22-81	SK-DW
" "	2-18-86	GR-SS
" "	12-19-90	KZ JB
" "	12/6/95	JG-SS
" "	3-08-01	JG-SS
" "	11-14-06	-JG
" "	12-19-11	MS

TIE SKETCH

(Show at least four ties)

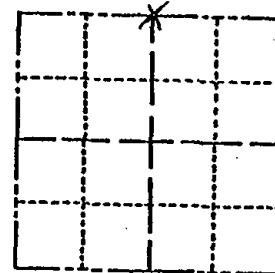




Survey Monument Record

TYPE OF MONUMENT: 30" HARRISON
STATE PLANE COORDINATES: N _____
E _____
ELEVATION - M.S.L. DATUM: _____
THETA ANGLE: _____
FIELD BOOK: _____ PAGE _____

CORNER NO. 733
SECTION 8
TOWN 14N
RANGE 6E



LOCATION
(Indicated by 'X')

SEAL:



BASIS FOR MONUMENT LOCATION

(Use reverse side if necessary)

Show info such as: History of corner, with reference to Vol. and pg, dates, surveyor; exact description of monument replaced; if location computed, by taped or EDM traverse; landowner remarks, etc.

FOUND 1" IRON PIPE AT FENCE CORNER AND MONUMENTED SAME. CHECKED CO. SURVEY RECORDS & DEAN JESSE HAD USED SAME MONUMENT IN PRIOR SURVEY. FIT TAPED TRAVERSE OF SECTION GOOD

CORNER O.K. 2-21-76 GR-SS
CORNER O.K. 12-22-81 SK-DW
" " 2-18-86 GR-SS

CERTIFIED CORRECT:

Frederic W. Zietlow

Registered Land Surveyor

DATE: July 31, 1975

Sept 30 88 Ken Carlson

TIE SKETCH

(Show at least four ties)

