

02
SECTION

14
TOWN

06
RANGE

ADAMS COUNTY

COUNTY CORNER NO: 31

ROMPORTOL ID: 41406020000

PUBLIC LAND SURVEY MONUMENT RECORD

TYPE OF MONUMENT: HARRISON
ADAMS COUNTY COORDINATES, NAD 83 (2007)

N. 126995.047

E. 552340.925

ELEVATION- _____ DATUM _____

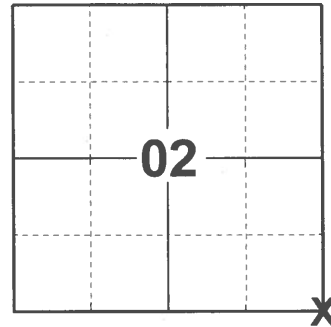
FIELD WORK DATE: 12/14/2020

BASIS FOR MONUMENT LOCATION

1976 - PLS 922 FOUND 1"X18" IRON SHAFT SET BY COUNTY SURVEYOR BARRETT IN 1898 AND USED BY SURVEYOR MULOCK FOR PLAT OF TALL PINES FILE #1 ENV. 7-8 IN 1972. FIT EDM TRAVERSE OF SECTION GOOD.

1999 - PLS 2021 HARRISON FOUND AT THIS CORNER SET BY PLS 922. 1976, REPLACING A 1"X18" IRON SHAFT SET BY COUNTY SURVEYOR BARRETT IN 1898 AND USED BY MULOCK FOR PLAT OF TALL PINES IN 1972. 1976 TIE SHEET SHOWS A DISTANCE FROM SET HARRISON TO 2" PIPE AT SOUTHEAST CORNER OF TALL PINES FIELD MEASUREMENT SHOWED ACTUAL DISTANCE TO BE 31.52'. IT WAS ALSO DISCOVERED THAT IRONS ALONG RW OF 8TH AVENUE DID NOT OFFSET SECTION LINE BY 33', AS INTENDED. SET PK NAIL ON EXTENSION OF N1/4 CORNER AND SE CORNER OF TALL PINES, 33.03' TO EAST AS PER PLAT.

2020 - PLS 2675 FOUND HARRISON 4"± BELOW THE ROAD SURFACE AND NO EXISTING MAGNAIL SET BY PLS 2021. ALSO FOUND 3 TIES AND 1 WITNESS TREE. DID NOT ACCEPT THE CURRENT LOCATION PER PLS 2021 AND ACCEPTED THE HARRISON AS THE CURRENT LOCATION SINCE IT REPLACES THE 1"X18" SHAFT SET BY THE COUNTY SURVEYOR BARRETT IN 1898. SET 2 NEW TIES AND MEASURED TO 3 FOUND IRONS AND 1 WITNESS TREE.



LOCATION
(INDICATE CORNER BY "X")

SEAL:



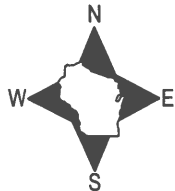
DATA SHOWN HERE ON THIS TIE SHEET IS CORRECT AND COMPLETE TO THE BEST OF MY KNOWLEDGE AND BELIEF.

PROFESSIONAL LAND SURVEYOR

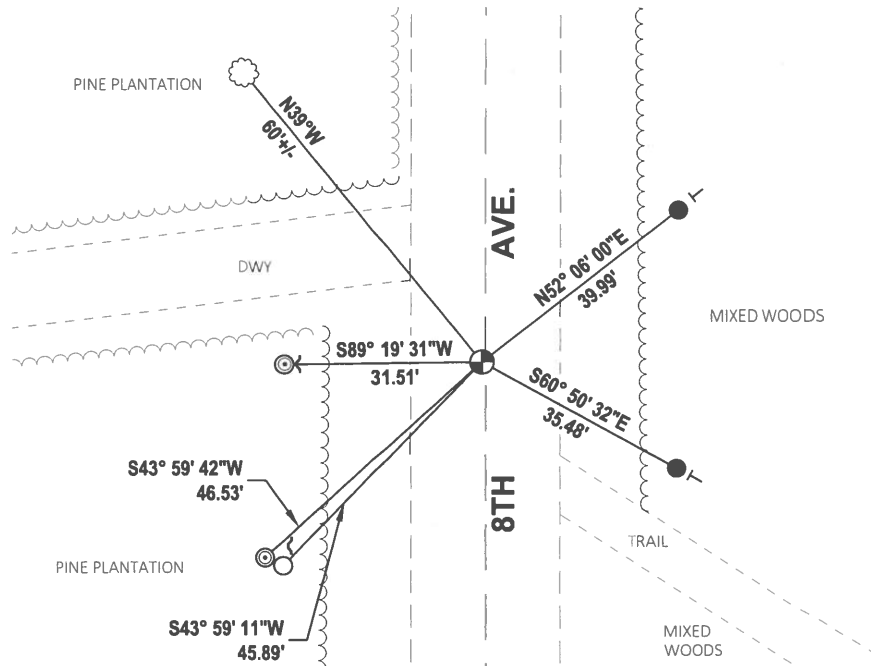
DATE 1/10/2021

- TIE SKETCH

NOTE: CORNER LANDS 0.5'± WEST OF CENTERLINE OF 8TH AVE.



- SET 3/4" x 18" IRON REBAR, 1.50#/FT
- FOUND 3/4" IRON ROD
- ⊙ FOUND 2-3/8" O.D. IRON PIPE
- ⊕ FOUND HARRISON MONUMENT
- ~ STEEL FENCE POST
- VINYL "T" POST
- ☼ WITNESS TREE



U.S. PUBLIC LAND SURVEY MONUMENT RECORD

ADAMS COUNTY

TYPE OF MONUMENT: SET PK NAIL (MAG. NAIL)

STATE PLANE COORDINATES: N _____
E _____

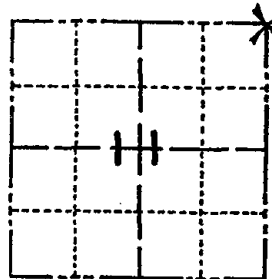
ELEVATION — M.S.L. DATUM: _____

THETA ANGLE: _____

FIELD BOOK: _____ PAGE _____

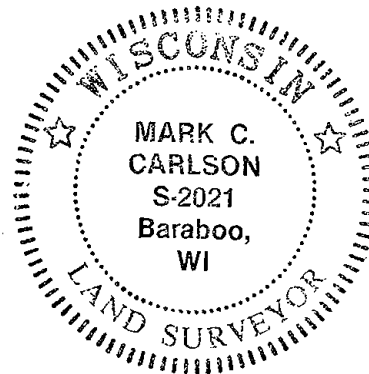
DRAWN BY: SMJ

CORNER NO. 928 (31)
SECTION 11
TOWN 14N
RANGE 6E



LOCATION
(Indicated by 'X')

SEAL:



DATA SHOWN HERE ON
CERTIFIED CORRECT:

Mark C. Carlson
Registered Land Surveyor

DATE: 10-25-99

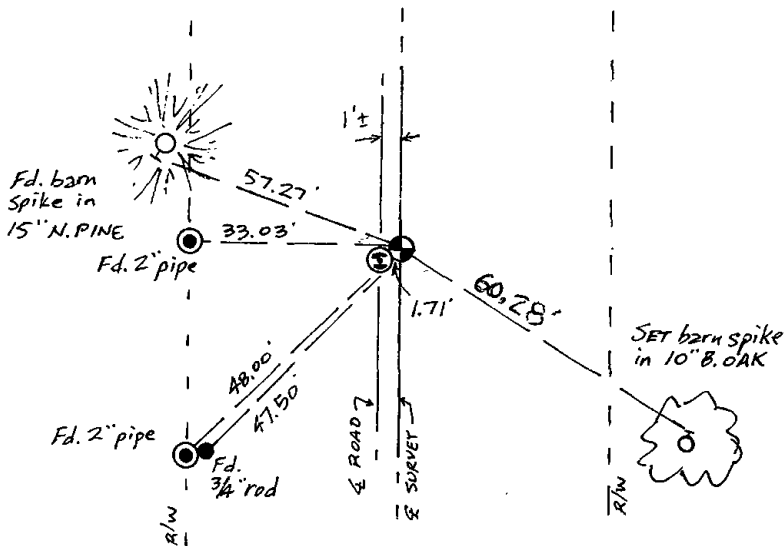
BASIS FOR MONUMENT LOCATION

Show info such as: History of corner, with reference to Vol. and pg., dates, surveyor; exact description of monument replaced; if location computed, by taped or EDM traverse; landowner remarks, etc. (Use reverse side if necessary)
(in conformance with Section A-E 502 of the Wisconsin Administrative Code)

Harrison found at this corner was set by Zietlow in 1976, replacing a 1" x 18" iron shaft set by County Surveyor Barrett in 1898 and used by Mulock for Plat of Tall Pines in 1972. 1976 tie sheet shows distance from set Harrison to 2" pipe at SE corner of Tall Pines to be 33.35', conflicting with 33.03' from plat. Field measurement showed actual distance to be 31.52'. It was also discovered that irons along R/W of 8th Avenue did not offset section line by 33', as intended. Set PK nail on extension of N $\frac{1}{4}$ corner and SE corner of Tall Pines, 33.03' to east, as per plat.

TIE SKETCH

Show at least four ties, also fence lines, roads, topo, size and type of witness trees' and if off road - best way to arrive at corner.



MAINTENANCE RECORD

Date	Init.	Remarks
3-5-01	MHA SG	ALL OK
3/10/11	GPK	ALL OK



ADAMS COUNTY

Survey Monument Record

TYPE OF MONUMENT: 30" HARRISON
STATE PLANE COORDINATES: N _____
E _____

ELEVATION — M.S.L. DATUM: _____

THETA ANGLE: _____

FIELD BOOK: _____ PAGE _____

BASIS FOR MONUMENT LOCATION

(Use reverse side if necessary)

Show info such as: History of corner, with reference to Vol. and pg. dates, surveyor; exact description of monument replaced; if location computed, by taped or EDM traverse; landowner remarks, etc.

FOUND 1"X18" IRON SHAFT SET BY COUNTY SURVEYOR BARRETT IN 1898 AND USED BY SURVEYOR MULLOCK FOR PLAT OF TALL PINES FILE #1 ENV. 7-8 IN 1972. FIT EDM TRAVERSE OF SECTION GOOD.

V 2 P 202
612 R 4-23

CORNER O.K 12-21-81 SK-DW
" " 216-86 GR-SS

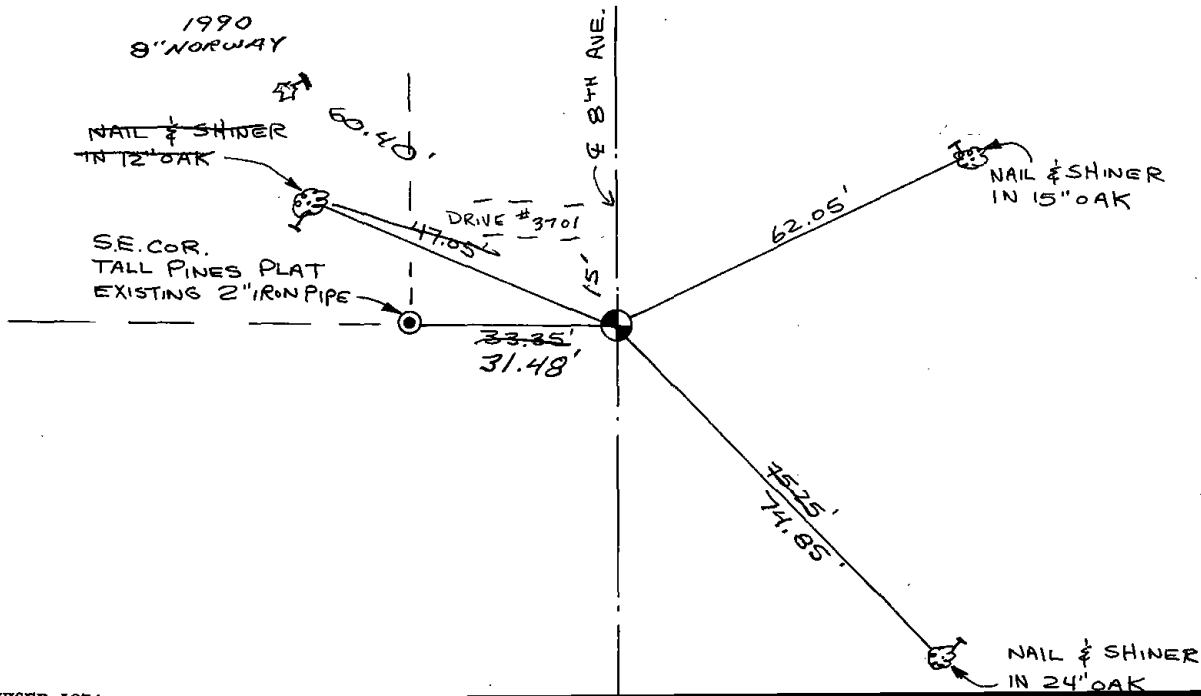
1 NEW - CHECK TIES - 11-1-90 JG-SS

COR OK 12/6/95 - JG-SS
SEE ATTACHED SHEET M. CARLSON, 10-25-99

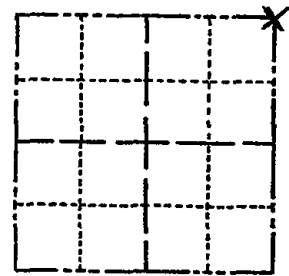
TIE SKETCH

1-GONE, 10-30-06, - JG

(Show at least four ties)

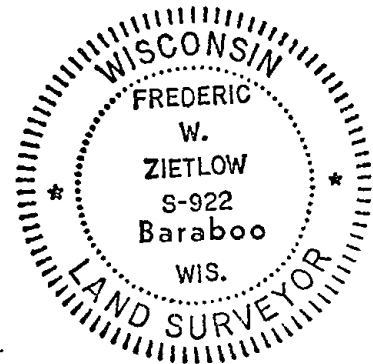


CORNER NO. 928
SECTION 11
TOWN 14N
RANGE 6E



LOCATION
(Indicated by 'X')

SEAL:



CERTIFIED CORRECT:

Frederic W. Zietlow

Registered Land Surveyor

DATE: MARCH 12, 1976

ADAMS COUNTY

Survey Monument Record

TYPE OF MONUMENT: 30" HARRISON

STATE PLANE COORDINATES: N _____

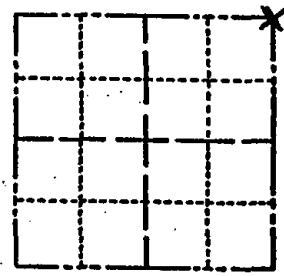
E _____

ELEVATION — M.S.L. DATUM: _____

THETA ANGLE: _____

FIELD BOOK: _____ PAGE _____

CORNER NO. 928 (31)
SECTION 11
TOWN 14N
RANGE 6E



LOCATION
(Indicated by 'X')

SEAL:



BASIS FOR MONUMENT LOCATION

(Use reverse side if necessary)

Show info such as: History of corner, with reference to Vol. and pg, dates, surveyor; exact description of monument replaced; if location computed, by taped or EDM traverse; landowner remarks, etc.

FOUND 1"X18" IRON SHAFT SET BY COUNTY SURVEYOR BARRETT IN 1898 AND USED BY SURVEYOR MULOCK FOR PLAT OF TALL PINES FILE #1 ENU. 7-8 IN 1972. FIT EDM TRAVERSE OF SECTION GOOD.

V 2 P 202
old rec -> 23

CORNER O.K 12-21-81 SK-DW
NEW TIE 9-12-96 SH-GW

CERTIFIED CORRECT:

Frederick W. Zietlow

Registered Land Surveyor

DATE: MARCH 12, 1976

TIE SKETCH

(Show at least four ties)

