

01  
SECTION

14  
TOWN

06  
RANGE

# ADAMS COUNTY

COUNTY CORNER NO: 32

ROMPORTOL ID: 41406010020

## PUBLIC LAND SURVEY MONUMENT RECORD

TYPE OF MONUMENT: HARRISON  
ADAMS COUNTY COORDINATES, NAD 83 (2007)

N. 127124.124

E. 554982.420

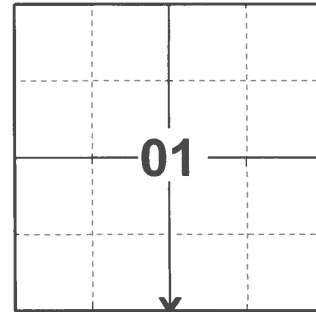
ELEVATION- \_\_\_\_\_ DATUM \_\_\_\_\_

FIELD WORK DATE: 12/14/2020

### BASIS FOR MONUMENT LOCATION

1975 - PLS 1191 FOUND STONE IN E-W FENCE. NO EVIDENCE OF A N-S FENCE. MEASURED WEST ALONG FENCE TO VERIFY DISTANCE WITHIN REASON FOR 1/4 MILE. TAPED TRAVERSE PROJ. 5986 F.B. 429 PG. 68, FILE #38-25 D-215

2020 - 2675 FOUND HARRISON FLUSH WITH THE GROUND AND 1 WITNESS TREE. THE MONUMENT AGREES WITH THE WITNESS TREE. ACCEPTED THE HARRISON AS THE CORNER LOCATION. SET 4 NEW TIES AND MEASURED TO THE EXISTING TREE.



LOCATION

(INDICATE CORNER BY "X")

SEAL:

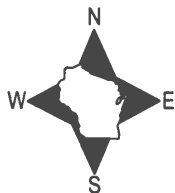


DATA SHOWN HERE ON THIS TIE SHEET IS CORRECT AND COMPLETE TO THE BEST OF MY KNOWLEDGE AND BELIEF.

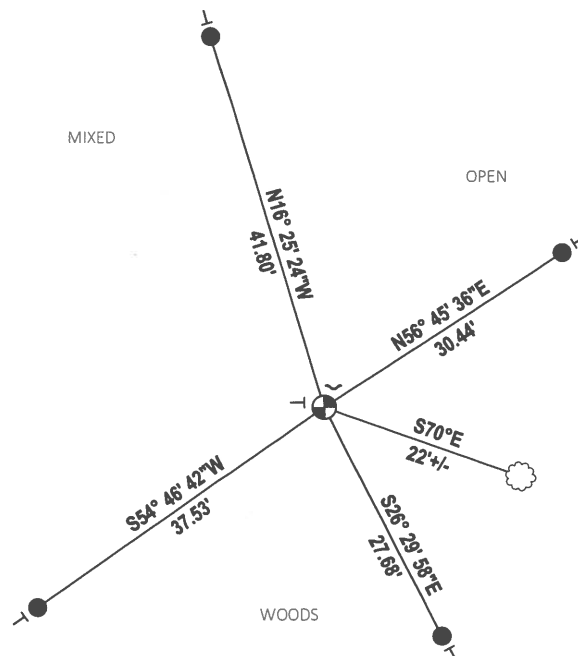
PROFESSIONAL LAND SURVEYOR

DATE 1/18/2021

### - TIE SKETCH



- SET 3/4" x 18" IRON REBAR, 1.50#/FT
- ⊕ FOUND HARRISON MONUMENT
- ✓ STEEL FENCE POST
- ┆ VINYL "T" POST
- ☼ WITNESS TREE

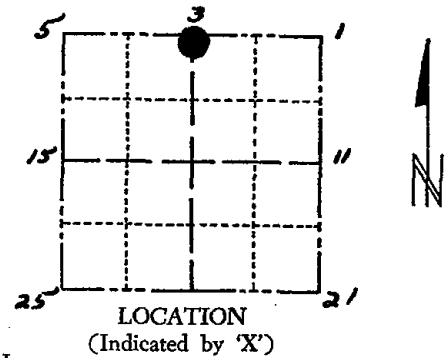


**ADAMS COUNTY**

**Survey Monument Record** *Set Harrison 5-7-75*

TYPE OF MONUMENT: 8" x 6" Stone  
~~STATE PLANE~~ COORDINATES: N 6291.080  
 ASSUMED E 830.584  
 ELEVATION — M.S.L. DATUM: \_\_\_\_\_  
 THETA ANGLE: \_\_\_\_\_  
 FIELD BOOK: 454 PAGE 70

CORNER NO. 598  
 SECTION 12  
 TOWN 14 N  
 RANGE 6 E



SEAL:

LOCATION  
(Indicated by 'X')

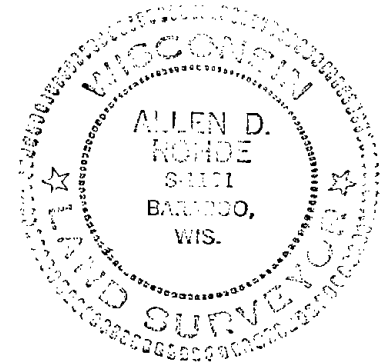
**BASIS FOR MONUMENT LOCATION**

(Use reverse side if necessary)

Show info such as: History of corner, with reference to Vol. and pg, dates, surveyor; exact description of monument replaced; if location computed, by taped or EDM traverse; landowner remarks, etc.

*Fd Stone in E-W Fence  
 No Evidence of a N-S Fence  
 Men West Along Fe To Verify  
 Distance Within Reason For 1/4 Mi.  
 Taped Traverse  
 Proj. 5986 F.B. 429, P. 68  
 File # 38-25D-215*

CORNER O.K. 10-29-76 GR-0CH  
 CORNER O.K. 10-20-81 DW-SK  
 " " 3-4-82 SP-52  
 " " 11-1-90 JG-SS  
 " " 5-16-96 SS  
 " " 10-11-01 SS  
 " " 11-13-06 JG-SS  
 1 New Tie 12-01-11 65



CERTIFIED CORRECT:

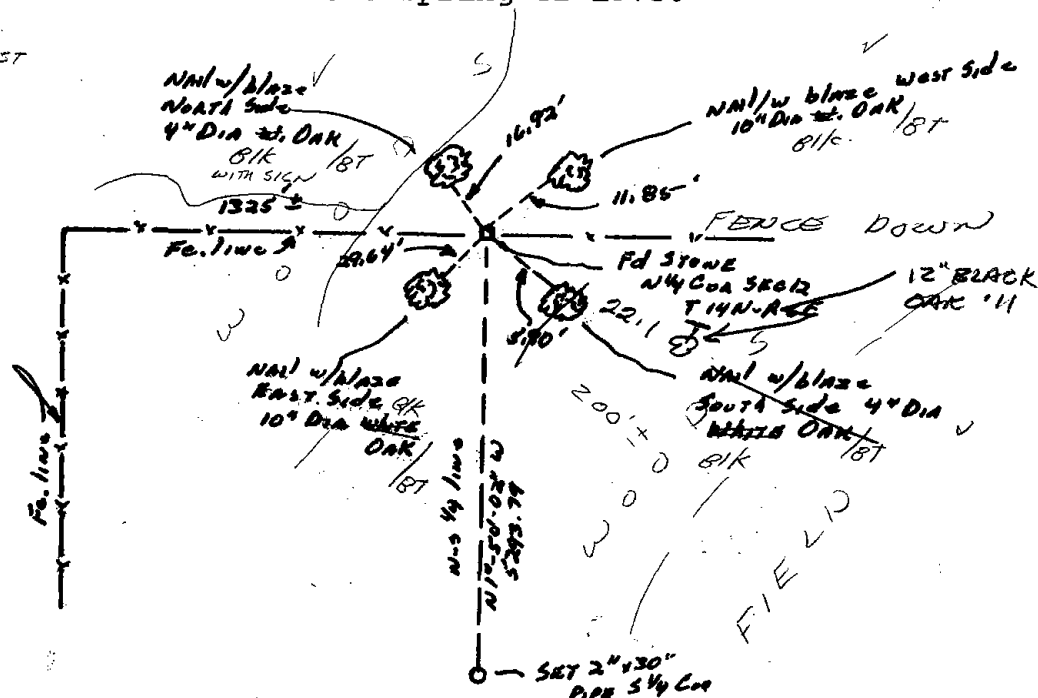
*Allen Rohde*  
 Registered Land Surveyor  
 DATE: 1-6-75

**TIE SKETCH**

(Show at least four ties)

**SURVEYOR'S NOTE:** This corner will be monumented with a Harrison Marker in the Spring of 1975.

NOTE: STEEL POST IMMEDIATELY WEST





Faint, illegible text located in the upper right quadrant of the page.

N

