

01 SECTION 14 TOWN 06 RANGE

ADAMS COUNTY

COUNTY CORNER NO: 33
ROMPORTOL ID: 4140601000

PUBLIC LAND SURVEY MONUMENT RECORD

TYPE OF MONUMENT: HARRISON
ADAMS COUNTY COORDINATES, NAD 83 (2007)

N. 127238.713
E. 557634.912

ELEVATION- --- DATUM ---

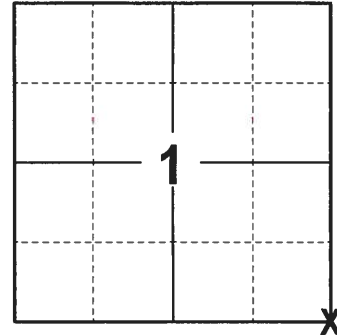
FIELD WORK DATE: 09/13/2017

BASIS FOR MONUMENT LOCATION

1975 - PLS 922 FOUND A PK NAIL BELIEVED TO HAVE BEEN SET BY SAM MULLEN. IN RETRACING HIS SURVEY AND PROJECTING THE E1/4 CORNER SOUTH FROM THE NE CORNER, THE PK NAIL FIT GOOD WITH THIS LINE. COUNTY SURVEY RECORDS WERE CHECKED AND THIS CORNER WAS NOT OF RECORD ON ANY RESURVEYS. SET A 30" HARRISON MONUMENT AT THE CORNER LOCATION AND TIED OUT.

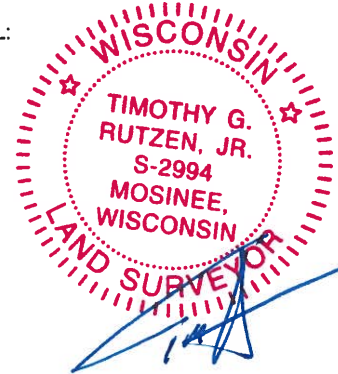
1999 - PLS 1397 EXISTING MONUMENT WAS FOUND AT THE CORNER LOCATION. MONUMENT WAS REMOVED AND RAISED DUE TO RECONSTRUCTION OF C.T.H. B. CORNER WAS RE-TIED.

2017 - PLS 2994 FOUND A HARRISON MONUMENT 6" BELOW THE ROAD SURFACE AND 1 PROPERTY IRON USED AS A TIE. THE MONUMENT AGREES WITH THE EXISTING PROPERTY IRON. ACCEPTED THE HARRISON MONUMENT AS THE CORNER LOCATION. SET 3 NEW TIES AND MEASURED TO THE TIES AND PROPERTY IRON.



LOCATION
(INDICATE CORNER BY "X")

SEAL:



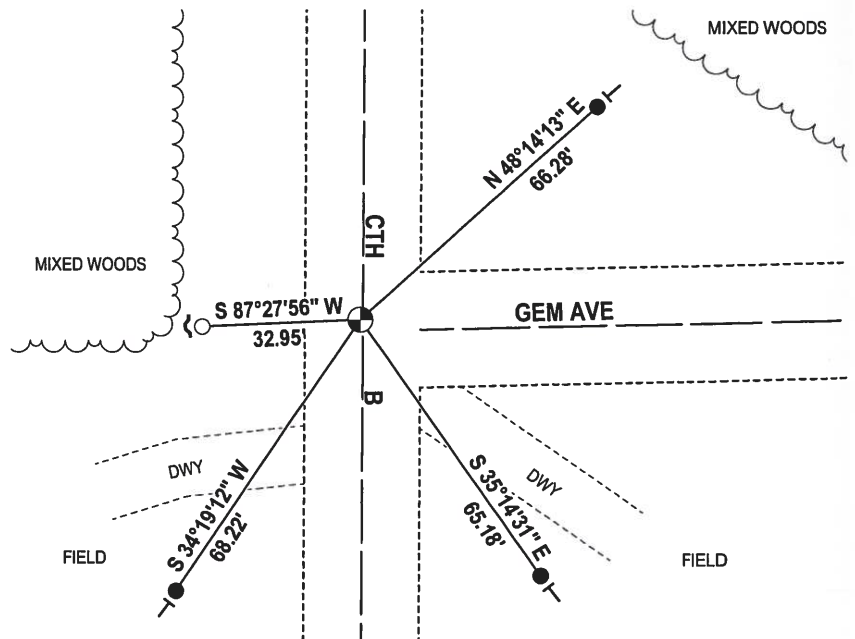
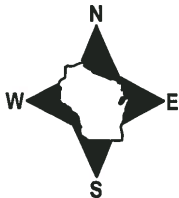
DATA SHOWN HERE ON THIS TIE SHEET IS CORRECT AND COMPLETE TO THE BEST OF MY KNOWLEDGE AND BELIEF.

PROFESSIONAL LAND SURVEYOR

DATE 11-15-17

- TIE SKETCH -

NOTE: THE CORNER FALLS 0.5'± WEST OF THE CENTERLINE OF CTH B AND 2'± NORTH OF THE CENTERLINE OF GEM AVE.



- 3/4" x 18" IRON REBAR SET, 1.50#/FT
- 3/4" IRON ROD FOUND
- ⊕ HARRISON FOUND
- ↙ STEEL FENCE POST
- ↖ VINYL "T" POST

ADAMS COUNTY

Survey Monument Record

TYPE OF MONUMENT: 30" HARRISON MARKER

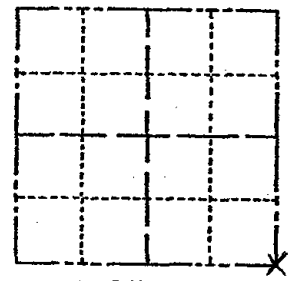
STATE PLANE COORDINATES: N _____ E _____

ELEVATION — M.S.L. DATUM: _____

THETA ANGLE: _____

FIELD BOOK: _____ PAGE _____

CORNER NO. 747
SECTION 1
TOWN 14 N
RANGE 6 E



LOCATION (Indicated by 'X')

SEAL:



BASIS FOR MONUMENT LOCATION

(Use reverse side if necessary)

Show info such as: History of corner, with reference to Vol. and pg, dates, surveyor; exact description of monument replaced; if location computed, by taped or EDM traverse; landowner remarks, etc.

FOUND PK NAIL BELIEVED TO HAVE BEEN SET BY SAM MULLEN. IN RETRACING HIS SURVEY AND PROJECTING THE ELY CORNER SOUTH FROM THE NE COR THIS HIT GOOD FOR LINE. COUNTY SURVEY RECORDS WERE CHECKED AND THIS CORNER WAS NOT OF RECORD ON ANY RESURVEYS

CORNER O.K. 10-29-16 GR-DCH
CORNER O.K. 10-22-81 SK-DW
" " 2/6-86 RL-SS

1 GONE - 3 REMAIN - NOTHING AVAILABLE FOR NEW TIE 11-1-90 JB-SS

2 NEW TIES, 1 GONE, COR OK 12/6/95

CERTIFIED CORRECT:

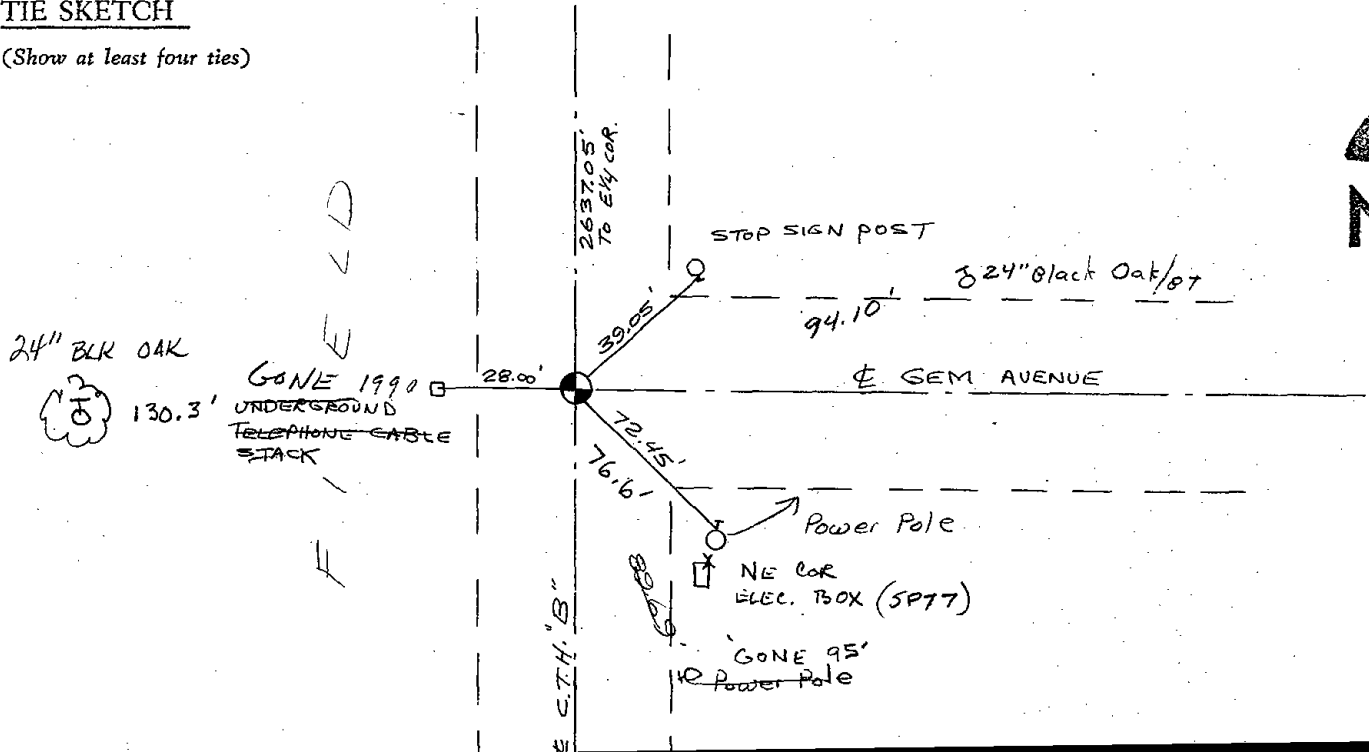
Frederic W. Zietlow

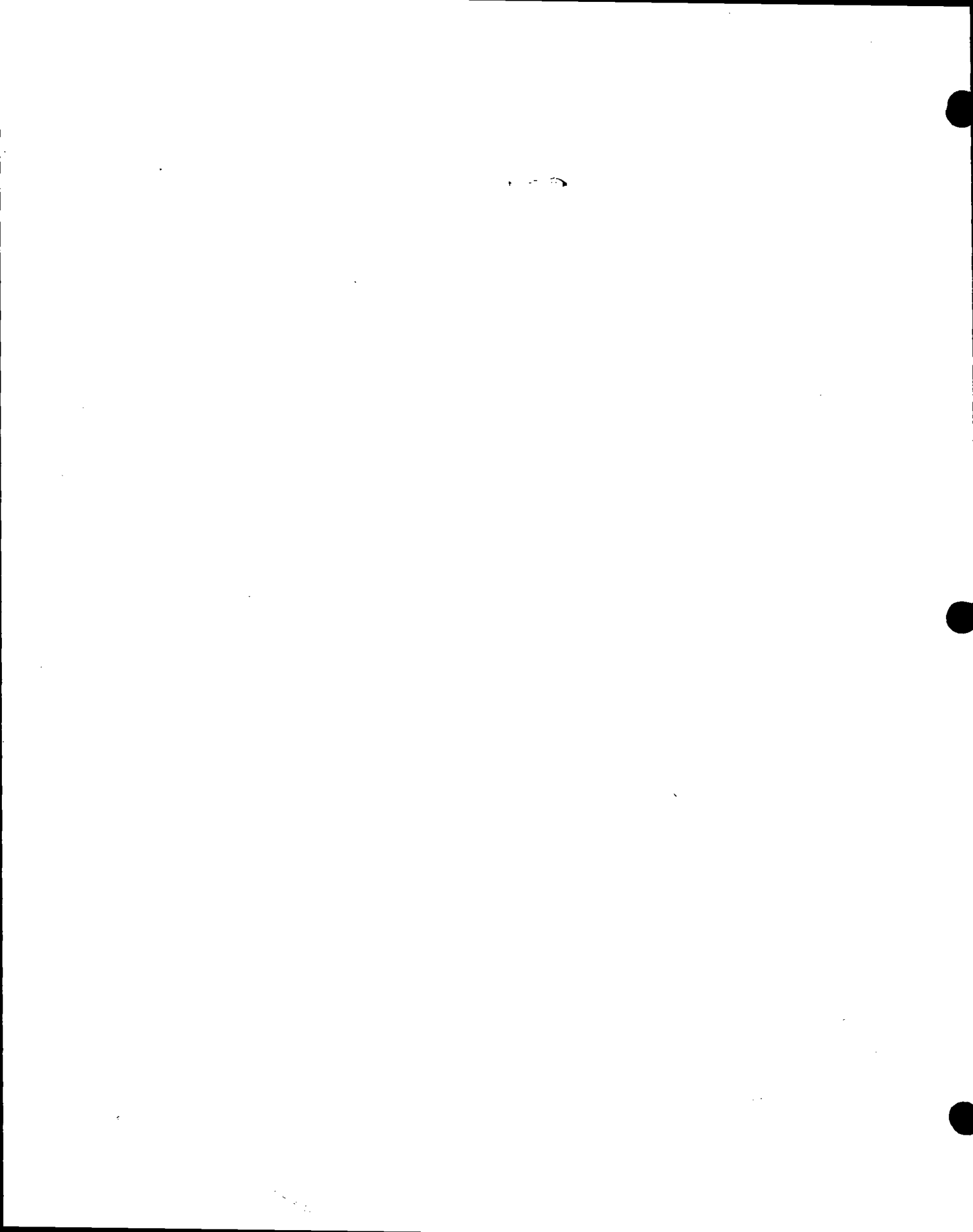
Registered Land Surveyor

DATE: APRIL 30, 1975

TIE SKETCH

(Show at least four ties)





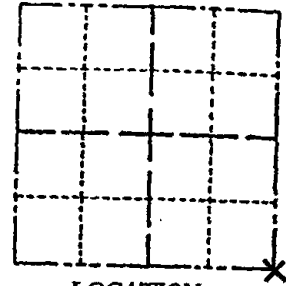
ADAMS COUNTY

Survey Monument Record

TYPE OF MONUMENT: 30" HARRISON MARKER
STATE PLANE COORDINATES: N _____
E _____

ELEVATION — M.S.L. DATUM: _____
THETA ANGLE: _____
FIELD BOOK: _____ PAGE _____

CORNER NO. 747
SECTION 1
TOWN 14N
RANGE 6E



LOCATION
(Indicated by 'X')

BASIS FOR MONUMENT LOCATION

(Use reverse side if necessary)

Show info such as: History of corner, with reference to Vol. and pg, dates, surveyor; exact description of monument replaced; if location computed, by taped or EDM traverse; landowner remarks, etc.

Existing Monument was found in place. Monument was removed and raised due to reconstruction of C.T.H. "B". All tie measurements are horizontal measurements unless noted otherwise.

3-5-01 - ALL OK, MH *JA*
1- GONE, 1-NEW, 1-18-06 - *JG*
OK 12-19-11 MS

SEAL:



CERTIFIED CORRECT
Dennis Russell
Registered Land Surveyor
DATE: *July 26, 1999*

TIE SKETCH

(Show at least four ties)

ALL MEASUREMENTS ARE HORIZONTAL.

