

08  
SECTION

14  
TOWN

06  
RANGE

# ADAMS COUNTY

COUNTY CORNER NO: 44

ROMPORTOL ID: 41406080020

## PUBLIC LAND SURVEY MONUMENT RECORD

TYPE OF MONUMENT: HARRISON  
ADAMS COUNTY COORDINATES, NAD 83 (2007)

N. 121201.633

E. 533827.489

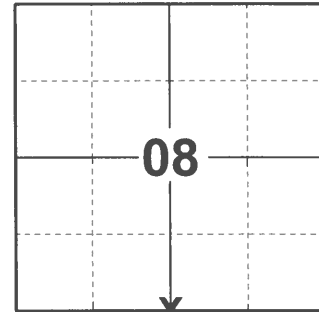
ELEVATION- \_\_\_\_\_ DATUM \_\_\_\_\_

FIELD WORK DATE: 12/21/2020

### BASIS FOR MONUMENT LOCATION

1976 - PLS 922 CHECKED ADAMS COUNTY SURVEY RECORDS AND MONUMENTED CORNER SHOWN ON CHRISTIANSEN SURVEY DONE BY MYSELF IN FEB. OF 1975. FOUND T-BAR FENCE POST OVER 6"X6"X UNKNOWN LENGTH. LEFT STONE IN PLACE AND SET 18" OF HARRISON MONUMENT ON TOP OF IT. THERE IS NO RECORD OF THIS STONE. FIT EDM TRAVERSE AND OCCUPATION OF SECTION GOOD.

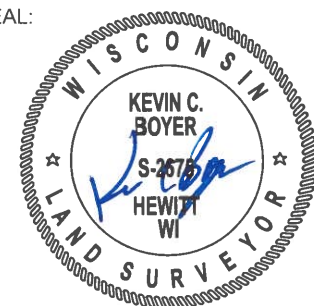
2020 -PLS 2675 FOUND HARRISON 4"± ABOVE THE GROUND, 1 WITNESS, AND A WISDOT R/W IRON. THE MONUMENT AGREES WITH THE WITNESS. ACCEPTED THE HARRISON AS THE CORNER LOCATION. SET 4 NEW TIES, MEASURED TO A FOUND WISDOT R/W IRON, AND THE WITNESS.



LOCATION

(INDICATE CORNER BY "X")

SEAL:

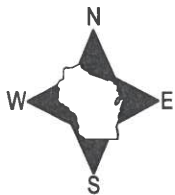


DATA SHOWN HERE ON THIS TIE SHEET IS CORRECT AND COMPLETE TO THE BEST OF MY KNOWLEDGE AND BELIEF.

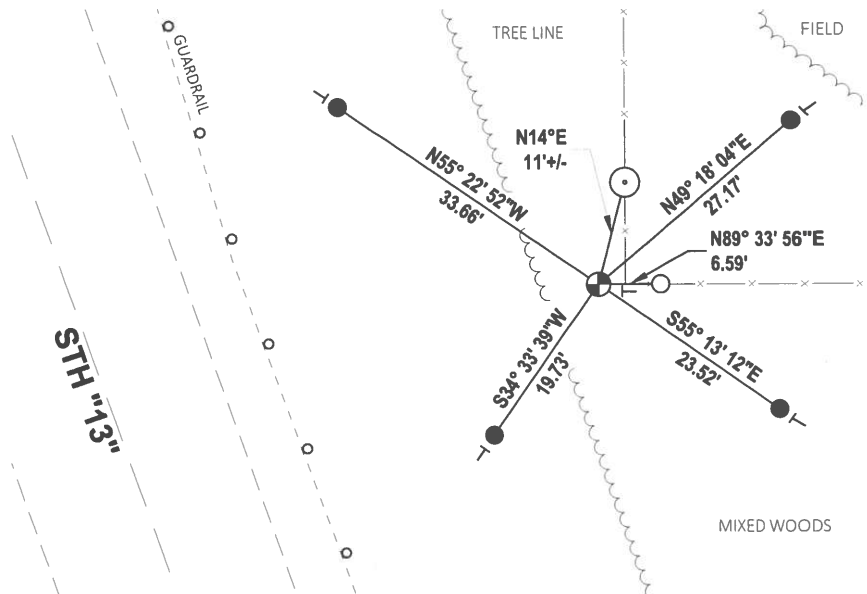
PROFESSIONAL LAND SURVEYOR

DATE 1/10/2021

### TIE SKETCH



- SET 3/4" x 18" IRON REBAR, 1.50#/FT
- FOUND 3/4" IRON ROD
- ⊕ FOUND HARRISON MONUMENT
- ⊙ WITNESS BRACE POST
- └ VINYL "T" POST



# ADAMS COUNTY

## Survey Monument Record

TYPE OF MONUMENT: HARRISON MONUMENT QUARTER COR.

STATE PLANE COORDINATES: N \_\_\_\_\_

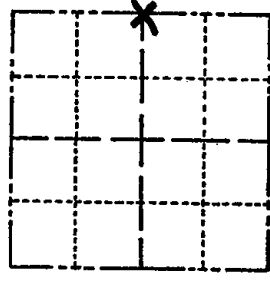
E \_\_\_\_\_

ELEVATION — M.S.L. DATUM: \_\_\_\_\_

THETA ANGLE: \_\_\_\_\_

FIELD BOOK: \_\_\_\_\_ PAGE \_\_\_\_\_

CORNER NO. 990  
 SECTION 17  
 TOWN 14 N  
 RANGE 6 E



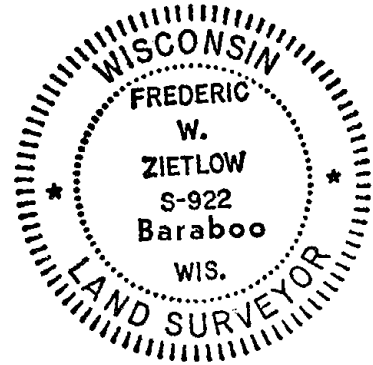
LOCATION  
(Indicated by 'X')

### BASIS FOR MONUMENT LOCATION

(Use reverse side if necessary)

Show info such as: History of corner, with reference to Vol. and pg, dates, surveyor; exact description of monument replaced; if location computed, by taped or EDM traverse; landowner remarks, etc.

SEAL:



CHECKED ADAMS COUNTY SURVEY RECORDS AND MONUMENTED CORNER SHOWN ON CHRISTIANSEN SURVEY DONE BY MYSELF IN FEB. OF 1975. FOUND T-BAR FENCE POST OVER 6"X6"X UNKNOWN LENGTH. LEFT STONE IN PLACE & SET 13" OF HARRISON MONUMENT ON TOP OF IT. THERE IS NO RECORD OF THIS STONE. FIT EDM TRAVERSE & OCCUPATION OF SECTION GOOD.

CERTIFIED CORRECT:

Frederic W. Zietlow  
Registered Land Surveyor

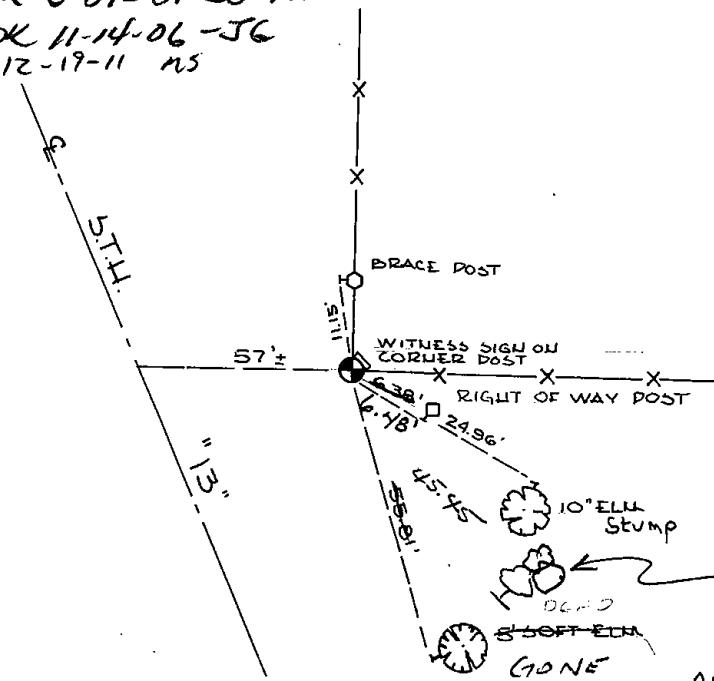
DATE: JUNE 8, 1976

CORNER	O.K.	12-21-81	SK-DW	
"	"	2-13-86	GR-SS	
"	"	3-25-91	GR-JG	1 TIE
"	"	4-24-96	JG-SS	

### TIE SKETCH SEE ATTACHED SHEET MB4SH, 4-8-99

(Show at least four ties)

ALL OK 3-07-01 JG-MH  
 ALL OK 11-14-06 -JG  
 OK 12-19-11 MS



12" Box ELDER  
IN CLUMP  
1991

ALL TREES ARE BLAZED WITH PKNAILS & SHAWTS

# ADAMS COUNTY

## Survey Monument Record

TYPE OF MONUMENT: HARRISON MONUMENT QUARTER COR.

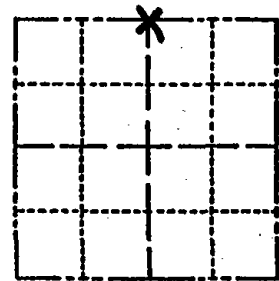
STATE PLANE COORDINATES: N \_\_\_\_\_  
E \_\_\_\_\_

ELEVATION — M.S.L. DATUM: \_\_\_\_\_

THETA ANGLE: \_\_\_\_\_

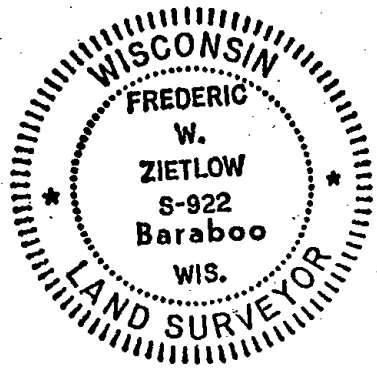
FIELD BOOK: \_\_\_\_\_ PAGE \_\_\_\_\_

CORNER NO. 490  
SECTION 17  
TOWN 14 N  
RANGE 6 E



LOCATION  
(Indicated by 'X')

SEAL:



### BASIS FOR MONUMENT LOCATION

(Use reverse side if necessary)

Show info such as: History of corner, with reference to Vol. and pg. dates, surveyor; exact description of monument replaced; if location computed, by taped or EDM traverse; landowner remarks, etc.

CHECKED ADAMS COUNTY SURVEY RECORDS AND MONUMENTED CORNER SHOWN ON CHRISTIANSEN SURVEY DONE BY MYSELF IN FEB. OF 1975. FOUND T-BAR FENCE POST OVER 6"X6"X UNKNOWN LENGTH. LEFT STONE IN PLACE & SET 1/8" OF HARRISON MONUMENT ON TOP OF IT. THERE IS NO RECORD OF THIS STONE. FIT EDM TRAVERSE & OCCUPATION OF SECTION GOOD.

CORNER o.k. 12-21-81 SK-DW  
" " 2-13-86 GR-SS  
NEW TIES " 4-8-99 MC-TSH

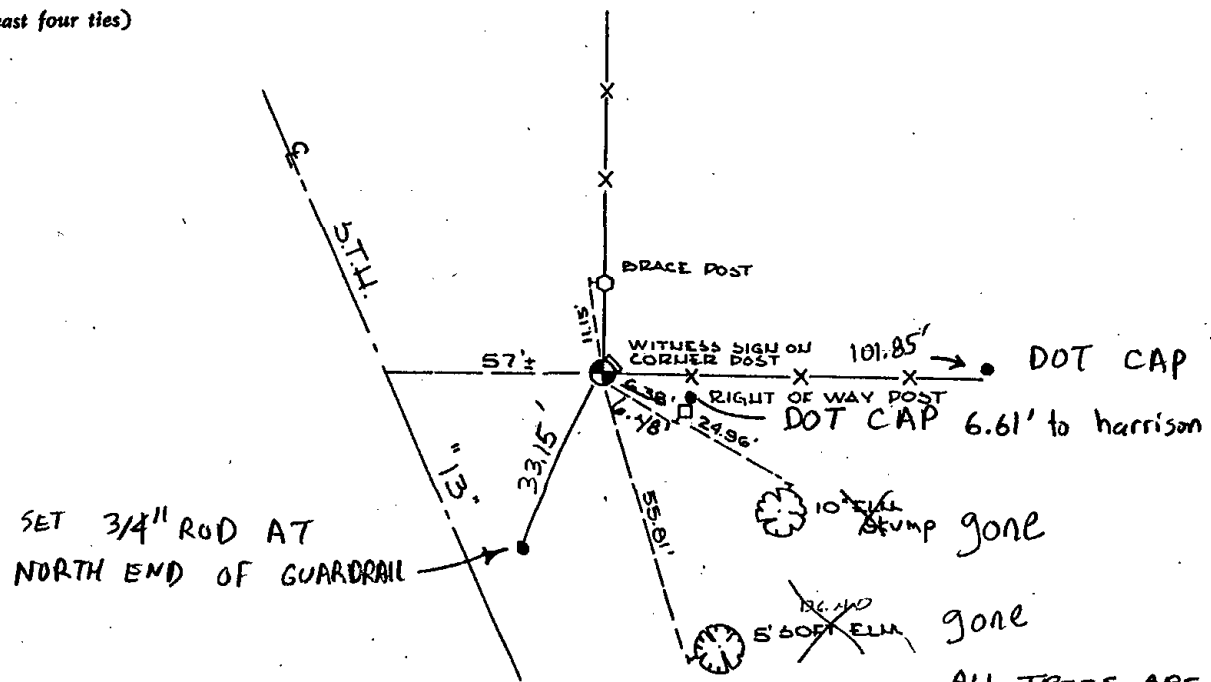
CERTIFIED CORRECT:

*Frederic W. Zietlow*  
Registered Land Surveyor

DATE: JUNE 8, 1976

### TIE SKETCH

(Show at least four ties)



ALL TREES ARE BLAZED WITH PK NAILS & SHINERS