

PUBLIC LAND SURVEY MONUMENT RECORD

TYPE OF MONUMENT: HARRISON
 ADAMS COUNTY COORDINATES, NAD 83 (2007)

N. 121220.413

E. 536485.045

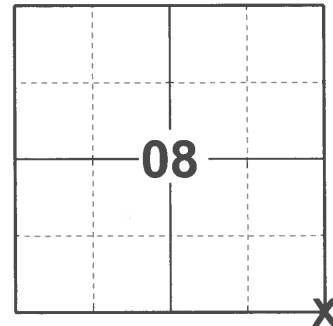
ELEVATION- _____ DATUM _____

FIELD WORK DATE: 12/22/2020

BASIS FOR MONUMENT LOCATION

1976 - PLS 922 CHECKED ADAMS COUNTY SURVEY RECORDS FOR RESURVEYS AND NONE WERE ON FILE. FOUND AN 8"X8"X24" TAPERED STONE WITH CROSS ON TOP, SET BY PERSONS UNKNOWN. ACCEPTED AS CORNER. FIT EDM TRAVERSE OF SECTION GOOD.

2020 - PLS 2675 FOUND HARRISON 2" ABOVE THE GROUND AND 3 WITNESS TREES. THE MONUMENT AGREES WITH ALL 3 WITNESS TREES. ACCEPTED THE THE HARRISON AS THE CORNER LOCATION. SET 4 NEW TIES AND MEASURED TO THE EXISTING WITNESS TREES.



LOCATION

(INDICATE CORNER BY "X")

SEAL:

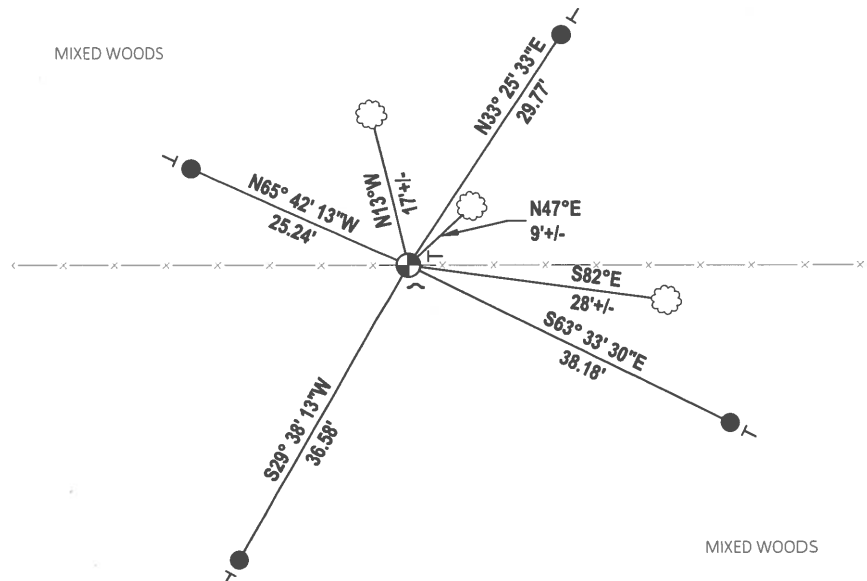
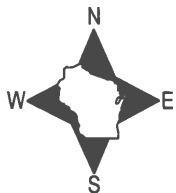


DATA SHOWN HERE ON THIS TIE SHEET IS CORRECT AND COMPLETE TO THE BEST OF MY KNOWLEDGE AND BELIEF.

PROFESSIONAL LAND SURVEYOR

DATE 1/18/2021

- TIE SKETCH



- SET 3/4" x 18" IRON REBAR, 1.50#/FT
- ⊕ FOUND HARRISON MONUMENT
- ┘ STEEL FENCE POST
- └ VINYL "T" POST
- ☁ WITNESS TREE

ADAMS COUNTY

Survey Monument Record

TYPE OF MONUMENT: HARRISON MONUMENT - SECTION COR

STATE PLANE COORDINATES: N _____

E _____

ELEVATION — M.S.L. DATUM: _____

THETA ANGLE: _____

FIELD BOOK: _____ PAGE _____

BASIS FOR MONUMENT LOCATION

(Use reverse side if necessary)

Show info such as: History of corner, with reference to Vol. and pg. dates, surveyor; exact description of monument replaced; if location computed, by taped or EDM traverse; landowner remarks, etc.

CHECKED ADAMS COUNTY SURVEY RECORDS FOR RESURVEYS & NONE WERE ON FILE. FOUND AN 8"X8"X24" TAPERED STONE WITH CROSS ON TOP, SET BY PERSONS UNKNOWN. ACCEPTED AS CORNER. FIT E.D.M. TRAVERSE OF SECTION GOOD.

CORNER O.K. 12-18-81 DW + SK

1 NEW TIE 7-15-91 JG-SS

2-GONE, 7 LEFT 4-25-96 JG-SS

4 TIES REMAINING - STEEL POST @ HARRISON - FENCES ARE MOSTLY DOWN 3-9-01 STS

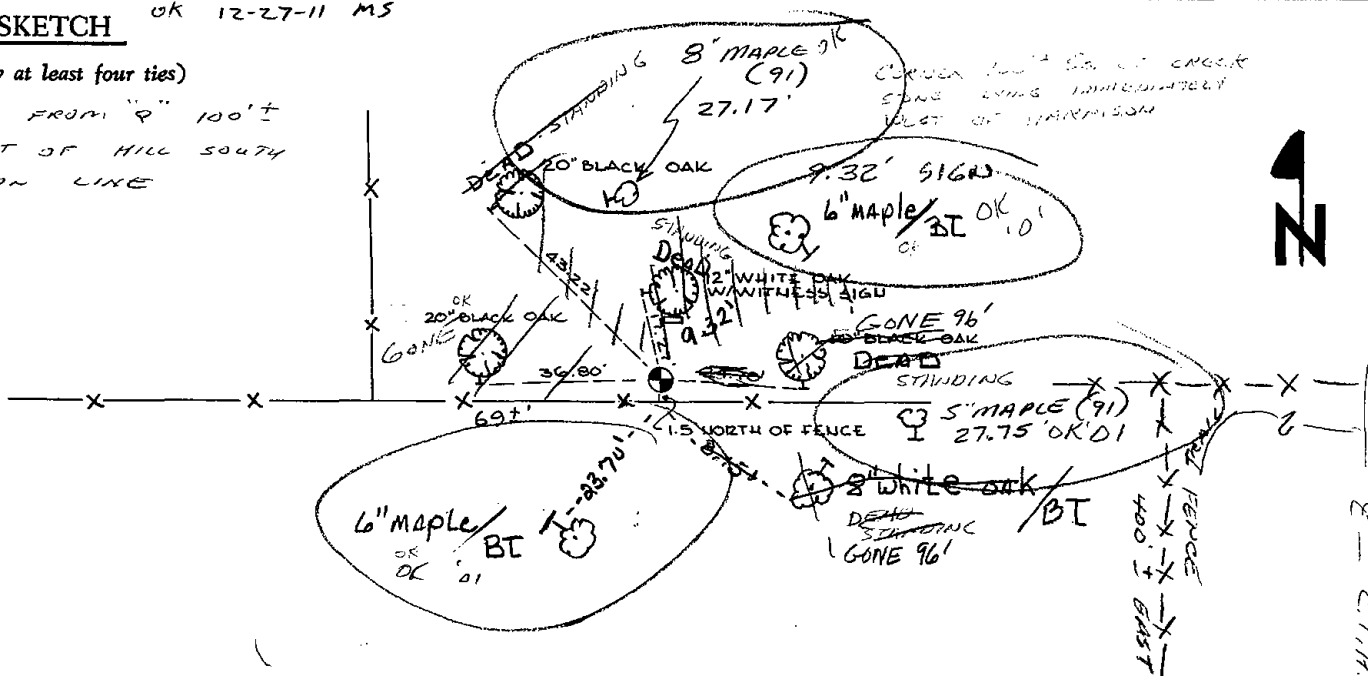
ALL O.K. 11-27-06, JG-SS

TIE SKETCH

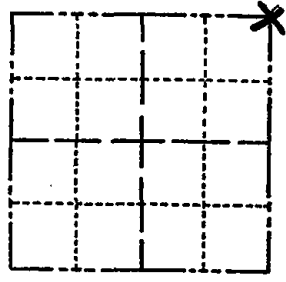
OK 12-27-11 MS

(Show at least four ties)

FIND TRAIL FROM "9" 100'± N. OF CREST OF HILL SOUTH OF SECTION LINE



CORNER NO. 984 45
 SECTION 17
 TOWN 14 N
 RANGE 6 E



LOCATION (Indicated by 'X')

SEAL:



CERTIFIED CORRECT:
Frederick W. Zietlow
 Registered Land Surveyor
 DATE: JUNE 8, 1976

ALL TREES ARE BLAZED WITH PK NAILS & SHINERS

B-3