

12  
SECTION

14  
TOWN

06  
RANGE

# ADAMS COUNTY

COUNTY CORNER NO: 52

ROMPORTOL ID: 41406120020

## PUBLIC LAND SURVEY MONUMENT RECORD

TYPE OF MONUMENT: HARRISON (BROKEN-TOP)  
ADAMS COUNTY COORDINATES, NAD 83 (2007)

N. 121832.294

E. 554951.856

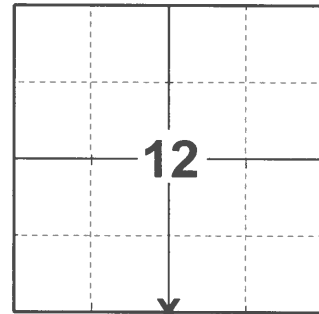
ELEVATION- \_\_\_\_\_ DATUM \_\_\_\_\_

FIELD WORK DATE: 12/17/2020

### BASIS FOR MONUMENT LOCATION

1975 - PLS FOUND OLD FENCE CORNER. COULD NOT FIND ANY OTHER EVIDENCE. PROJECT 5986 FIELD BOOK 429, PAGE 68, FILE 38-25D-215. TAPED TRAVERSE.

2020 - PLS 2675 FOUND HARRISON (BROKEN-TOP) 6"± BELOW THE GROUND SURFACE AND 4 WITNESSES. THE MONUMENT AGREES WITH ALL 4 WITNESSES. ACCEPTED THE HARRISON (BROKEN-TOP) AS THE CORNER LOCATION. SET 4 NEW TIES AND MEASURED TO THE EXISTING WITNESSES.



LOCATION

(INDICATE CORNER BY "X")

SEAL:

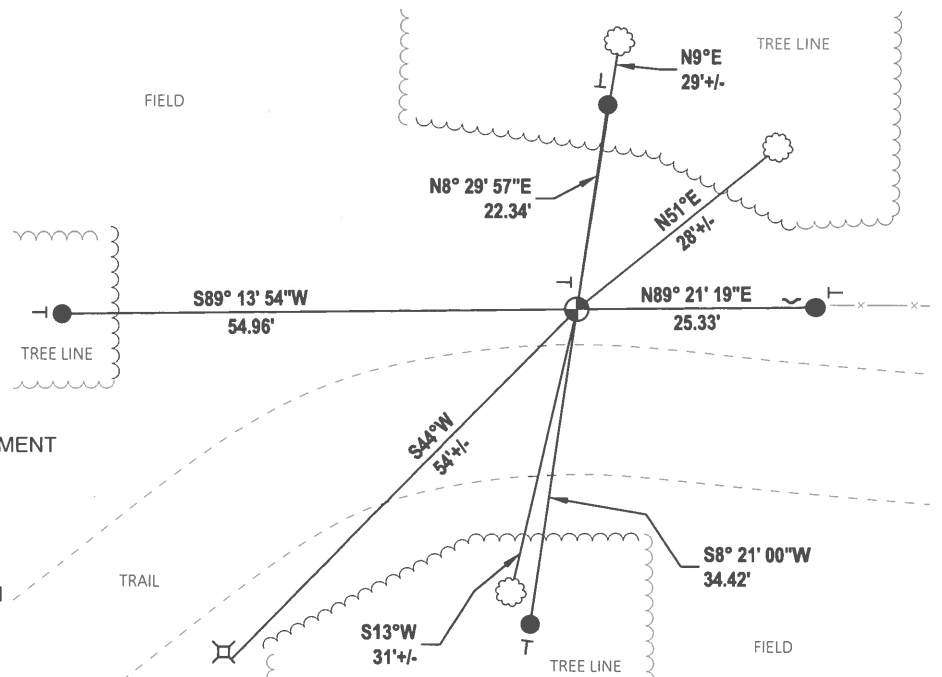
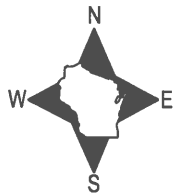


DATA SHOWN HERE ON THIS TIE SHEET IS CORRECT AND COMPLETE TO THE BEST OF MY KNOWLEDGE AND BELIEF.

PROFESSIONAL LAND SURVEYOR

DATE 1/10/2021

### - TIE SKETCH



- SET 3/4" x 18" IRON REBAR, 1.50#/FT
- ⊕ FOUND HARRISON (BROKEN-TOP) MONUMENT
- ✓ STEEL FENCE POST
- ┊ VINYL "T" POST
- ☁ WITNESS TREE
- ⊞ SOUTH EDGE OF NORTH HINGE BOLT ON NORTH ELECTRIC PEDESTAL

ADAMS COUNTY

Survey Monument Record

Set Harrison 5-7-75

TYPE OF MONUMENT: 2" x 30" IRON PIPE

STATE PLANE COORDINATES: N 1000.00

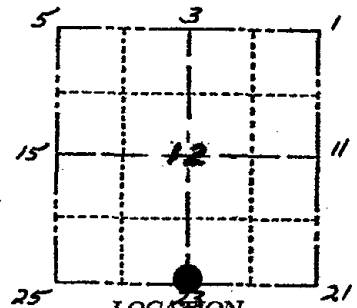
Assumed E 1000.00

ELEVATION — M.S.L. DATUM: \_\_\_\_\_

THETA ANGLE: \_\_\_\_\_

FIELD BOOK: 454 PAGE 70

CORNER NO. 597  
SECTION 12  
TOWN 14 N  
RANGE 6 E



SEAL:

BASIS FOR MONUMENT LOCATION

(Use reverse side if necessary)

Show info such as: History of corner, with reference to Vol. and pg. dates, surveyor; exact description of monument replaced; if location computed, by taped or EDM traverse; landowner remarks, etc.

Fd Old Fe Cor., Could not Find any other Evidence  
PROS 5980 F.B. 429, P. 68  
FILE 38-25D-215  
Taped TRAVERSE

CORNER O.K. 10-29-76 GR DCH

CORNER O.K. 10-21-81 SK DW

" " 3-6-82 " "

AKL OK 11-1-90 JG-SS

TIES OK 5-16-96 SS

TOP BROKEN — BOTTOM IN PLACE — 2 NEW TIES 10-11-01

1-LOVE, 4-LEFT 11-13-06 JG-SS

OK 12-01-11 SS



CERTIFIED CORRECT:

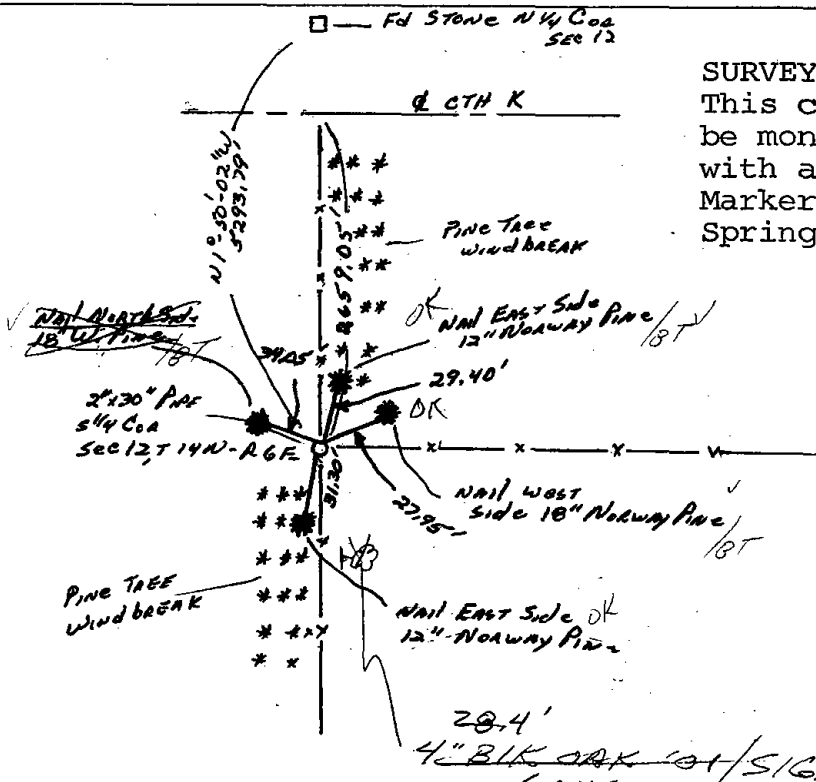
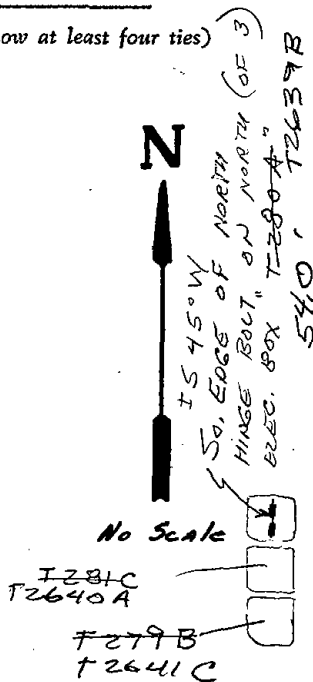
*Allen Ronde*

Registered Land Surveyor

DATE: 1-6-75

TIE SKETCH

(Show at least four ties)



SURVEYOR'S NOTE:  
This corner will be monumented with a Harrison Marker in the Spring of 1975.