

14  
SECTION

14  
TOWN

06  
RANGE

# ADAMS COUNTY

COUNTY CORNER NO.: 59

ROMPORTOL ID: 414006142000

## PUBLIC LAND SURVEY MONUMENT RECORD

TYPE OF MONUMENT: HARRISON

ADAMS COUNTY COORDINATES, NAD 83 (2007)

N. 119062.443

E. 552275.108

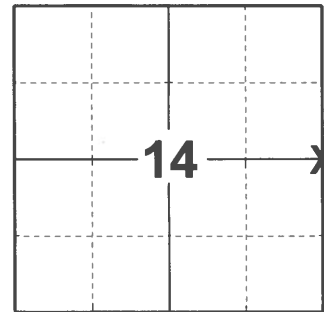
ELEVATION-      DATUM     

FIELD WORK DATE: 12/22/2020

### BASIS FOR MONUMENT LOCATION

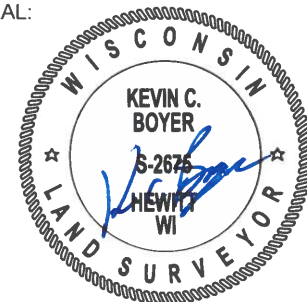
1977 - PLS 1103 UPON FIELD INVESTIGATION OF THIS CORNER, FOUND EXISTING HARRISON MONUMENT IN PLACE. FROM THE BEARING TREES TO THE HARRISON, IT APPEARS THAT THIS MONUMENT WAS SET BY SAM MULLEN. COULD FIND NO EVIDENCE OF THE BEARING TREES AS SET BY THE ORIGINAL GOVERNMENT LAND SURVEY. DID NOT EXCAVATE AT THIS TIME, AS A NUMBER OF SURVEYS BY MID-STATE ASSOC. HAVE USED THIS CORNER.

2020 - PLS 2675 FOUND HARRISON 4"± BELOW ROAD SURFACE AND NO TIES OR WITNESSES. ACCEPTED THE HARRISON AS THE CORNER LOCATION. SET 3 NEW TIES AND MEASURED TO A FOUND PROPERTY IRON.



LOCATION  
(INDICATE CORNER BY "X")

SEAL:



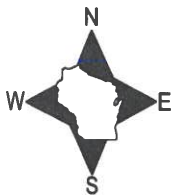
DATA SHOWN HERE ON THIS TIE SHEET IS CORRECT AND COMPLETE TO THE BEST OF MY KNOWLEDGE AND BELIEF.

PROFESSIONAL LAND SURVEYOR

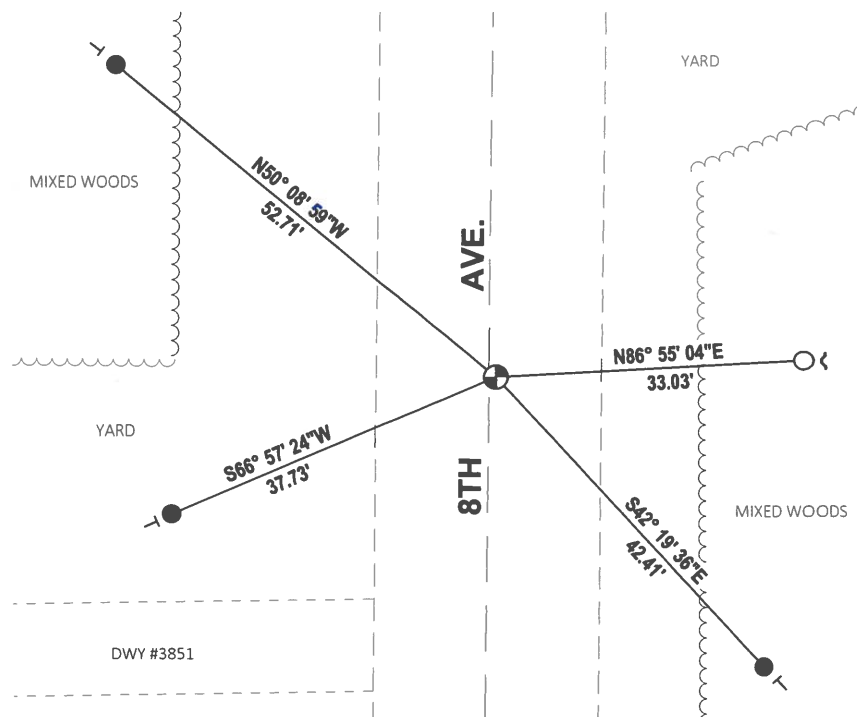
DATE 3/3/2021

### - TIE SKETCH

NOTE: CORNER IS 1"± EAST OF CENTERLINE OF 8TH AVE.



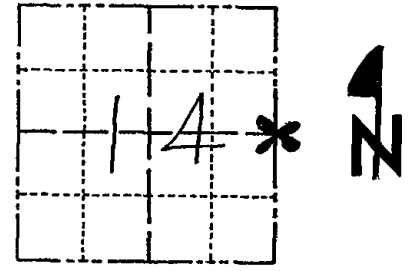
- SET 3/4" x 18" IRON REBAR, 1.50#/FT
- FOUND 3/4" IRON ROD
- ⊕ FOUND HARRISON MONUMENT
- ~ STEEL FENCE POST
- VINYL "T" POST



# Government Land Corner Certificate

ADAMS County  
 TYPE OF MONUMENT: HARRISON MONUMENT  
 STATE PLANE COORDINATES: N \_\_\_\_\_  
 E \_\_\_\_\_  
 ELEVATION — M.S.L. DATUM: \_\_\_\_\_  
 THETA ANGLE: \_\_\_\_\_  
 FIELD BOOK: 57 PAGE 5  
 DRAWN BY: G. RHINEHART

CORNER NO. 59  
 SECTION 14  
 TOWN 14  
 RANGE 6



LOCATION  
 (Indicated by 'X')

## BASIS FOR MONUMENT LOCATION

Show info such as: History of corner, with reference to Vol. and pg., dates, surveyor; exact description of monument replaced; if location computed, by taped or EDM traverse; landowner remarks, etc. (Use reverse side if necessary)

Upon field investigation of this corner, found existing Harrison monument in place. From the bearing trees to the Harrison, it appears that this monument was set by Sam Mullen.

Could find no evidence of the of bearing trees as set by the original Government Land Survey.

Did not excavate at this time, as a number of surveys by Mid-State Assoc. have used this corner.

ALL OK 11-1-90 JG-SS  
 " " 3-5-01 MA-JA  
 OK, 11-10-06-JG-SS

SEAL:



DATA SHOWN HERE ON  
 CERTIFIED CORRECT:

Dale C. Hagen  
 Registered Land Surveyor

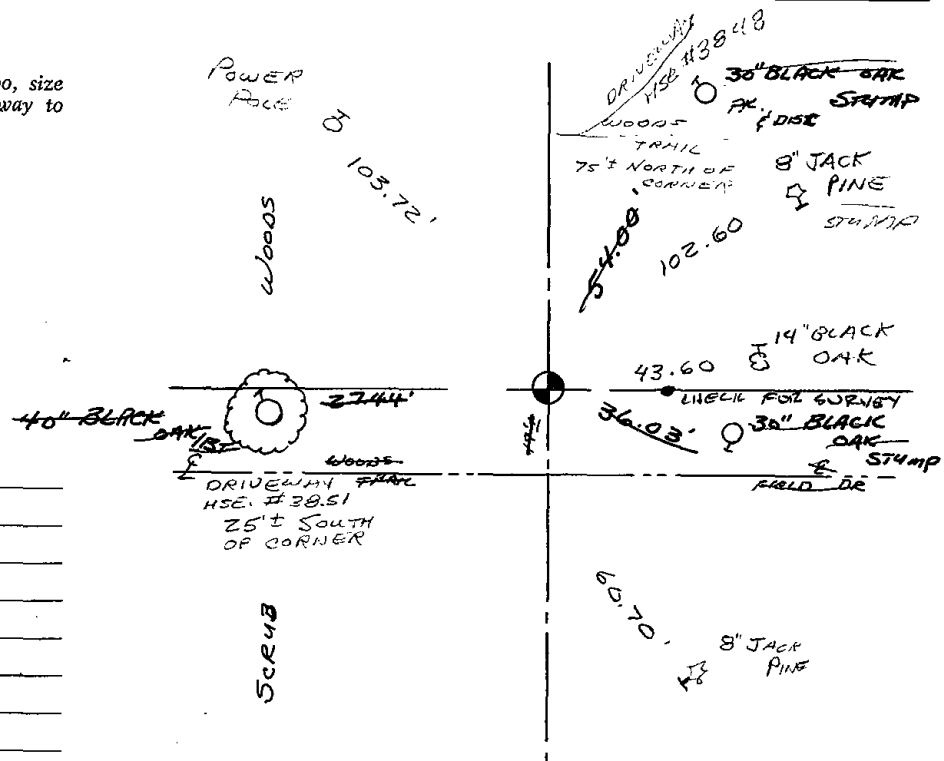
DATE: 9-6-77

## TIE SKETCH

Show at least four ties, also fence lines, roads, topo, size and type of witness trees and if off road - best way to arrive at corner.

### NOTE:

Ties in trees to nail in disc.



## MAINTENANCE RECORD

Date	Init.	Remarks
3-26-86	GR-SS	NEW TIES
4-23-96	SS	S.K.