

17  
SECTION

14  
TOWN

06  
RANGE

# ADAMS COUNTY

COUNTY CORNER NO: 64

ROMPORTOL ID: 41406170020

## PUBLIC LAND SURVEY MONUMENT RECORD

TYPE OF MONUMENT: HARRISON  
ADAMS COUNTY COORDINATES, NAD 83 (2007)

N. 115929.302

E. 533819.678

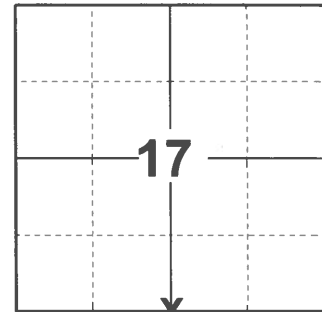
ELEVATION-        DATUM       

FIELD WORK DATE: 01/04/2021

### BASIS FOR MONUMENT LOCATION

1976 - PLS 922 CHECKED ADAMS COUNTY SURVEY RECORDS AND NO RESURVEYS WERE ON FILE. FOUND A 4"X4"X12" STONE FLUSH WITH THE GROUND SET BY PERSONS UNKNOWN. FIT EDM TRAVERSE OF SECTION GOOD.

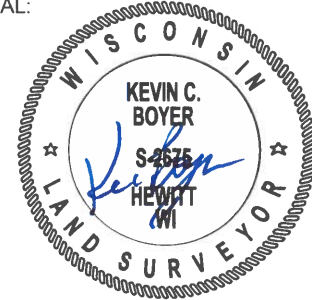
2021 - PLS 2675 FOUND HARRISON FLUSH WITH THE GROUND AND 1 WITNESS. THE MONUMENT AGREES WITH THE WITNESS. ACCEPTED THE HARRISON AS THE CORNER LOCATION. SET 2 NEW TIES, 1 WITNESS AND MEASURED TO THE EXISTING WITNESS.



LOCATION

(INDICATE CORNER BY "X")

SEAL:



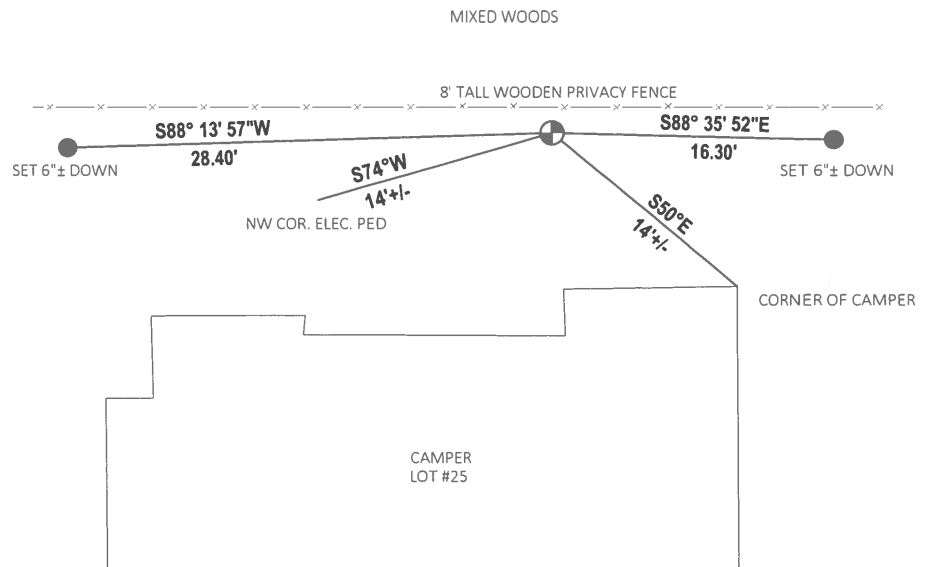
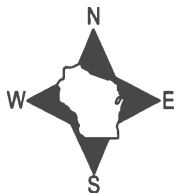
DATA SHOWN HERE ON THIS TIE SHEET IS CORRECT AND COMPLETE TO THE BEST OF MY KNOWLEDGE AND BELIEF.

PROFESSIONAL LAND SURVEYOR

DATE 3/3/2021

### TIE SKETCH

NOTE: 4"X4" FENCE POST WITH DND SIGN ATTACHED JUST NORTH OF CORNER.



- SET 3/4" x 18" IRON REBAR, 1.50#/FT
- ⊕ FOUND HARRISON MONUMENT

# ADAMS COUNTY

## Survey Monument Record

TYPE OF MONUMENT: ~~HARRISON MONUMENT, QUARTER COR.~~

STATE PLANE COORDINATES: N \_\_\_\_\_

E \_\_\_\_\_

ELEVATION — M.S.L. DATUM: \_\_\_\_\_

THETA ANGLE: \_\_\_\_\_

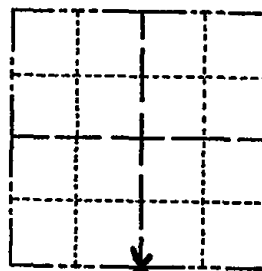
FIELD BOOK: \_\_\_\_\_ PAGE \_\_\_\_\_

CORNER NO. 991

SECTION 17

TOWN 14 N.

RANGE 6 E.



LOCATION  
(Indicated by 'X')

SEAL:

### BASIS FOR MONUMENT LOCATION

(Use reverse side if necessary)

Show info such as: History of corner, with reference to Vol. and pg, dates, surveyor; exact description of monument replaced; if location computed, by taped or EDM traverse; landowner remarks, etc.

CHECKED ADAMS COUNTY SURVEY RECORDS  
AND NO RESURVEYS WERE ON FILE.  
FOUND A 4"X4"X12" STONE FLUSH  
WITH GROUND SET BY PERSONS UNKNOWN.  
FIT EDM TRAVERSE OF SECTION GOOD.

CORNER O.K. 10-18-81 SK-DW

OK 3-18-85 J. PLEHN S-1790

" " 2-18-86 GR-SS

" " 6-20-91 JG

1-GONE, 1-NEW COR OK 4-24-96 JG-SS

ALL OK 3/7/01 MH-SS

3-GONE 3-LEFT, 11-14-06 JG



CERTIFIED CORRECT:

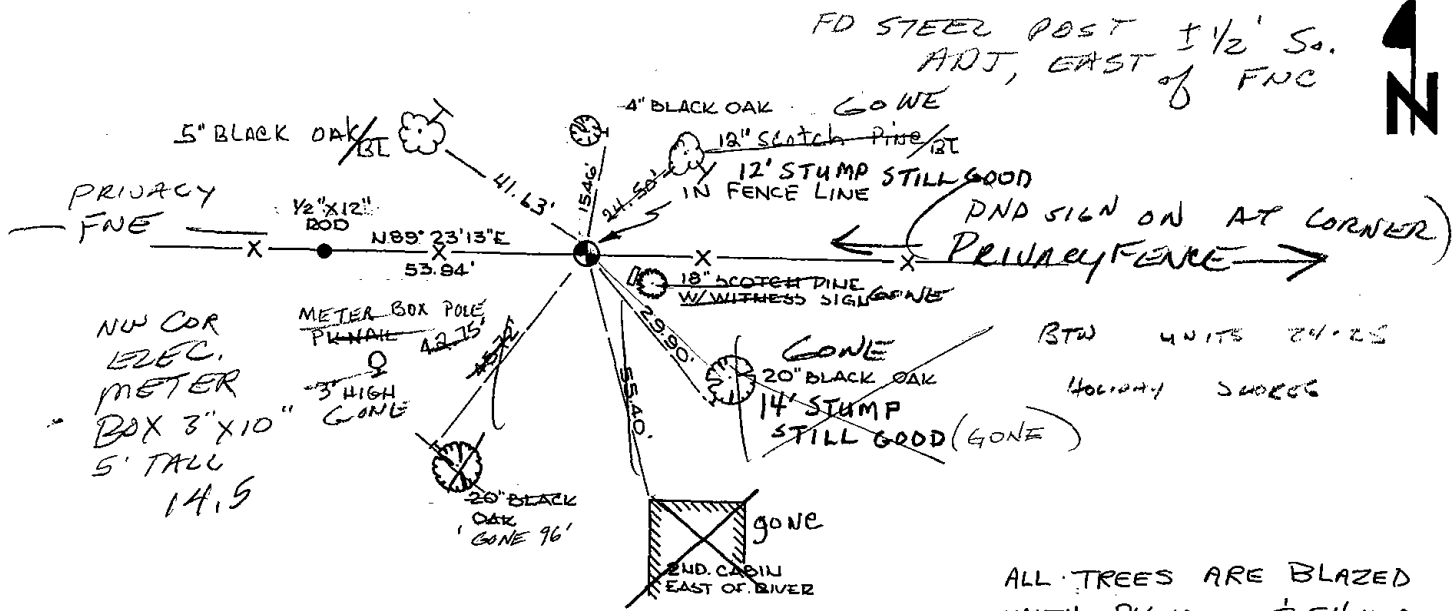
*Frederic W. Zietlow*

Registered Land Surveyor

DATE: JUNE 8, 1976

### TIE SKETCH 1 NEW 7-5-12 SS

(Show at least four ties)



ALL TREES ARE BLAZED  
WITH PKNAILS & SHINERS