

PUBLIC LAND SURVEY MONUMENT RECORD

TYPE OF MONUMENT: HARRISON
 ADAMS COUNTY COORDINATES, NAD 83 (2007)

N. 115946.755

E. 536459.068

ELEVATION- DATUM

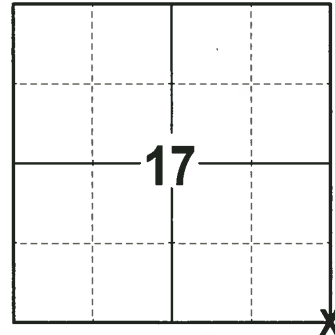
FIELD WORK DATE: 06/21/2017

BASIS FOR MONUMENT LOCATION

1976 - PLS 922 FOUND AN OLD 1-1/4" PIPE AT A FENCE CORNER THAT WAS BELIEVED TO BE SET BY BARRETT IN 1897 AS HE CALLED FOR A GAS PIPE. COULD NOT FIND ANY REMNANTS OF BEARING TREE. TRAVERSE OF THE SECTION VERIFIED THE CORNER LOCATION. SET HARRISON MONUMENT AND 4 WITNESSES.

1985 - PLS 1790 FOUND HARRISON MONUMENT AND 4 WITNESSES.

2017 - PLS 2994 FOUND HARRISON MONUMENT FLUSH WITH THE GROUND AND 2 WITNESSES. THE MONUMENT AGREES WITH THE EXISTING WITNESSES. ACCEPTED HARRISON AS THE CORNER LOCATION. SET 4 NEW TIES AND RE-MEASURED TO THE EXISTING WITNESSES.



LOCATION
 (INDICATE CORNER BY "X")

SEAL:



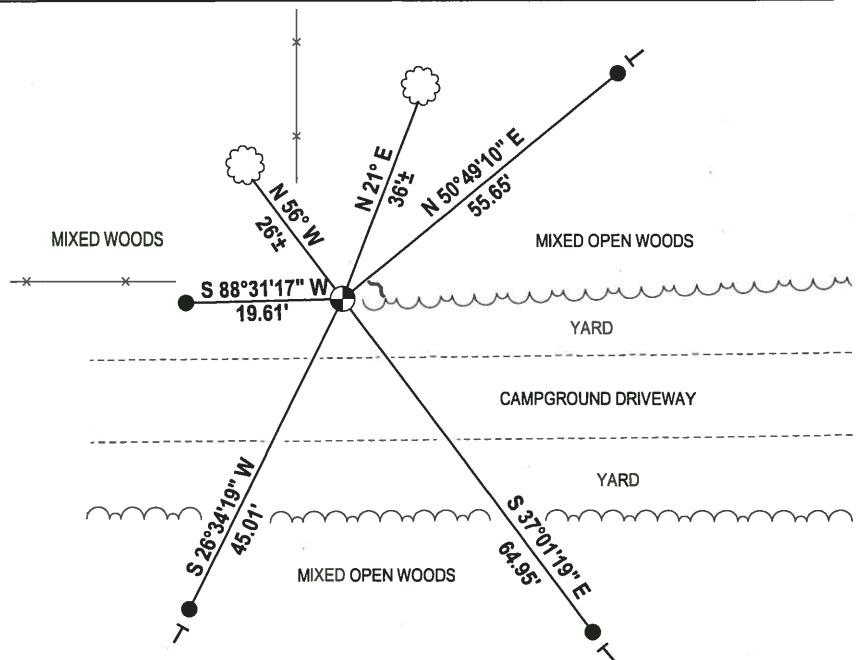
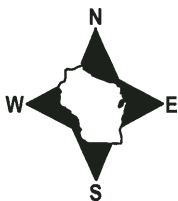
DATA SHOWN HERE ON THIS TIE SHEET IS CORRECT AND COMPLETE TO THE BEST OF MY KNOWLEDGE AND BELIEF.

PROFESSIONAL LAND SURVEYOR

DATE 7-14-17

- TIE SKETCH

NOTE: THE CORNER FALLS 16'± NORTH OF THE CENTERLINE OF THE CAMPGROUND DRIVEWAY.



- 3/4" x 18" IRON REBAR SET, 1.50#/FT
- ⊙ HARRISON FOUND
- ✓ STEEL FENCE POST
- └ VINYL "T" POST
- ⊙ WITNESS TREE FOUND

ADAMS COUNTY

Survey Monument Record

TYPE OF MONUMENT: HARRISON MONUMENT - SECTION COR.

STATE PLANE COORDINATES: N _____
E _____

ELEVATION — M.S.L. DATUM: _____

THETA ANGLE: _____

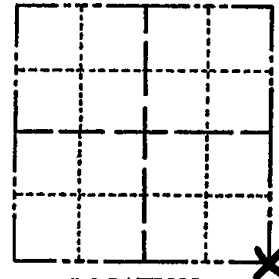
FIELD BOOK: _____ PAGE _____

CORNER NO. 992 ⁶⁵

SECTION 17

TOWN 14 N

RANGE 6 E



LOCATION
(Indicated by 'X')

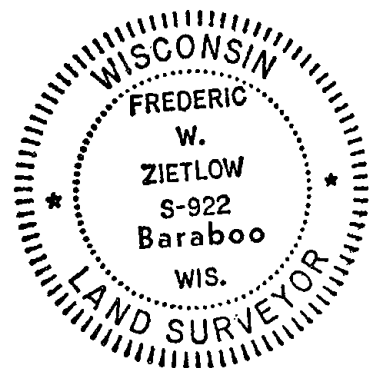


BASIS FOR MONUMENT LOCATION

(Use reverse side if necessary)

Show info such as: History of corner, with reference to Vol. and pg. dates, surveyor; exact description of monument replaced; if location computed, by taped or EDM traverse; landowner remarks, etc.

SEAL:



CERTIFIED CORRECT:

Frederic W. Zietlow
Registered Land Surveyor

DATE: JUNE 8, 1976

CHECKED ADAMS COUNTY SURVEY RECORDS FOR RESURVEYS. WE FOUND AN OLD 1 1/4" PIPE AT A FENCE CORNER. I BELIEVE THIS WAS SET BY BARRETT IN 1897 AS HE CALLED FOR A GAS PIPE. COULD FIND NO REMNANTS OF BEARING TREE. FIT EDM. TRAVERSE OF SECTION GOOD.

CORNER O.K 12-18-81 DW-SK
" 2-18-86 GR-SS OK

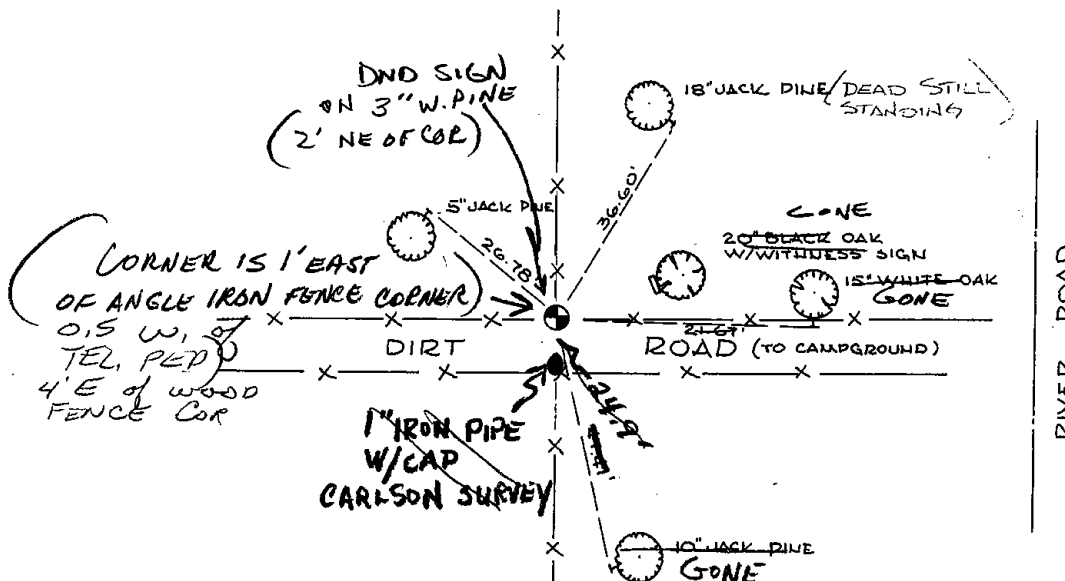
" 1-GONE, 1-NEW 6-20-91 JG

OK 4/24/96 JG-SS

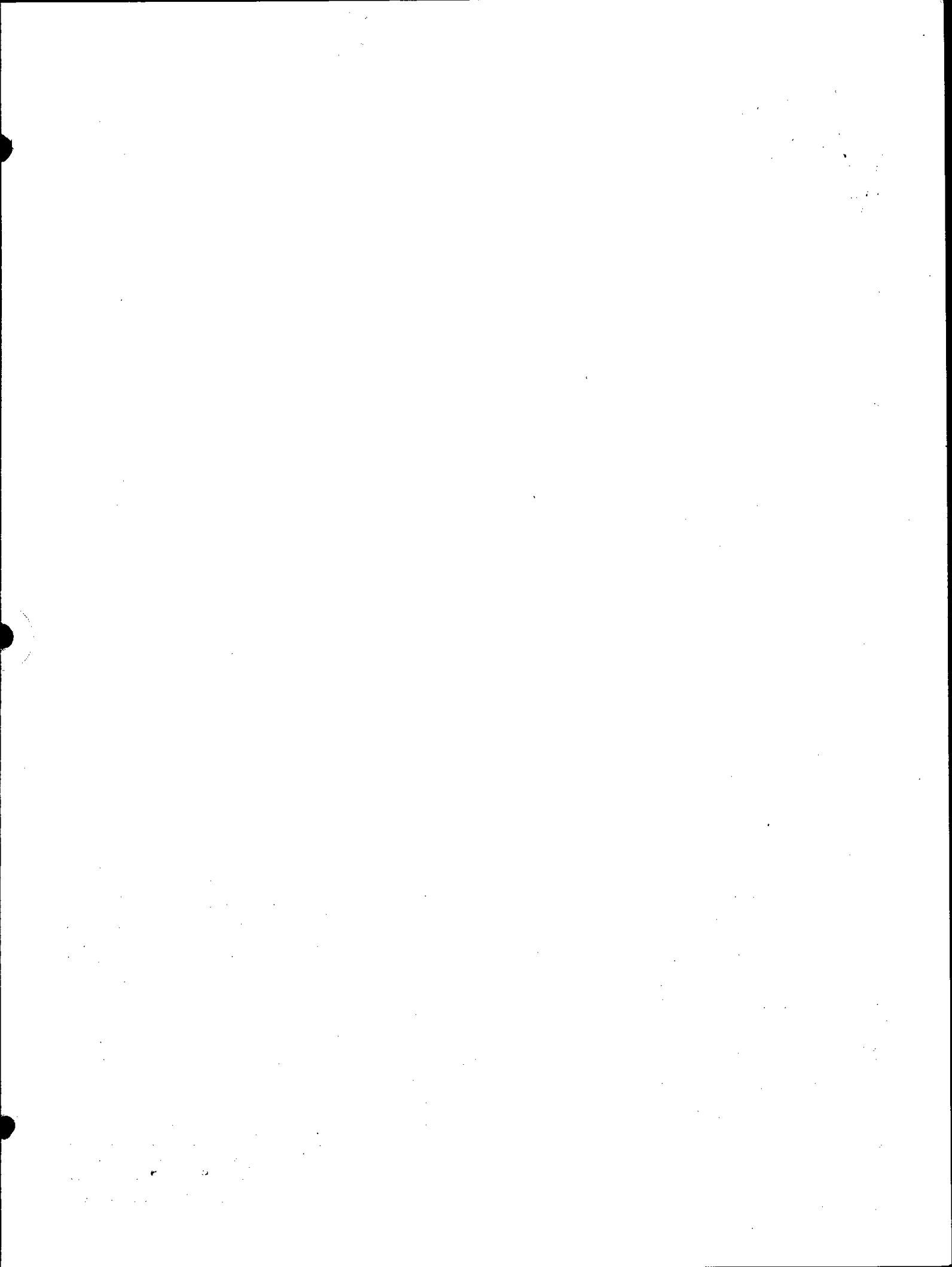
ALL OK 3/7/01 SG MH

TIE SKETCH 1-GONE, 11-14-06-JG
OK 7-5-11 SS

(Show at least four ties)



ALL TREES ARE BLAZED WITH PK NAILS & SHINERS



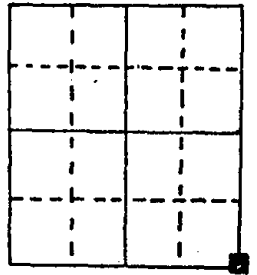
U.S. PUBLIC LAND SURVEY MONUMENT RECORD

Note: This form is intended and designed to fulfill all requirements of Wisconsin Administrative Code, Chapter A-E 5.02, U.S. Public Land Survey Monument Record (3) (a) (b) (c) (d) (e) (f) (g) (h) (i). An additional sheet may be added if necessary to conform with said requirements.

(a) Corner location: Township 14 North
Range 6 ~~East~~ West

Dell Prairie
Town/City/Village

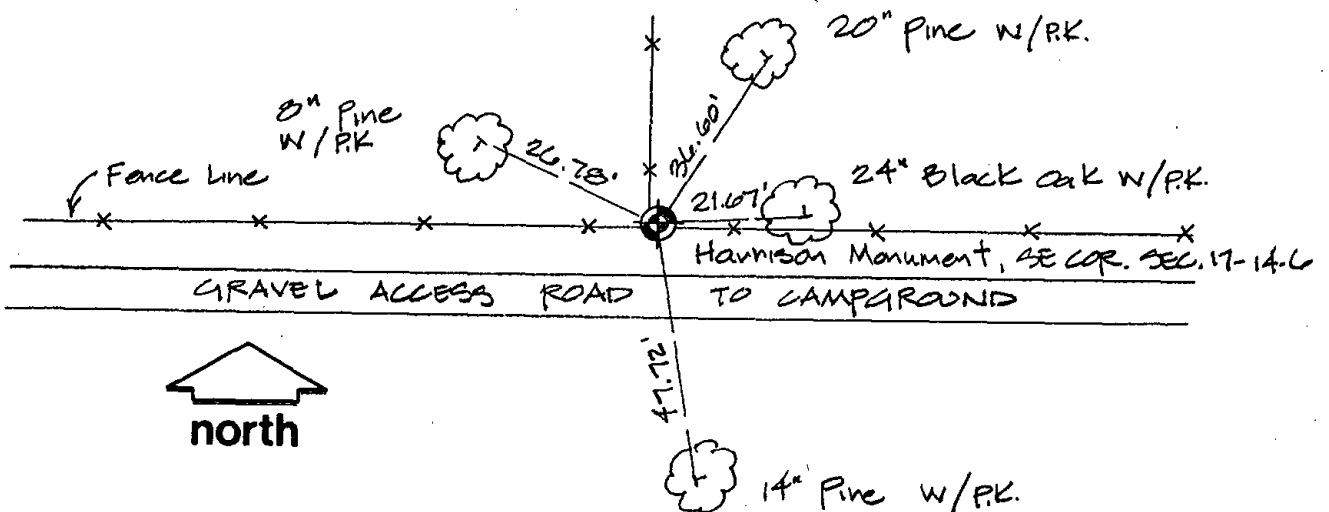
Adams County
County



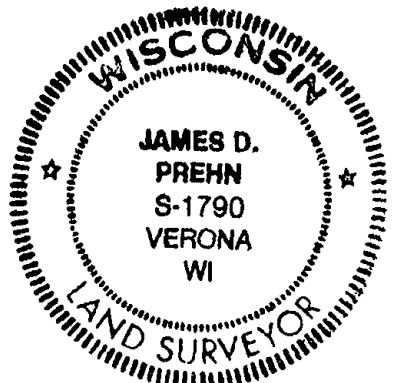
Section 17

(b) (f) (g) (h) Description of monument found at this corner and if it was accepted, state all evidence (material, testimonial, occupational, plats, records, other monuments) used as a basis for accepting. If not accepted or if nothing was found, state evidence used as basis for establishing location. If reestablished through lost corner proportionate methods, indicate all monuments, distances and directions used to establish.

(c) (d) (e) Plan view of corner with ties to at least 4 witness monuments. If in disagreement with previously established corner, show the distances between the two corners and also indicate the ties to the disputed corner.



(i) I, James D. Prehn, S-1790
(type or print name) certify that the corner location on this record was determined by me or under my direction and control and that this U.S. Public Land Survey Monument Record is correct and complete to the best of my knowledge and belief.



James D. Prehn
Signature Date 3-18-05

