

22
SECTION

14
TOWN

06
RANGE

ADAMS COUNTY

COUNTY CORNER NO: 78

ROMPORTOL ID: 41406222000

PUBLIC LAND SURVEY MONUMENT RECORD

TYPE OF MONUMENT: HARRISON

ADAMS COUNTY COORDINATES, NAD 83 (2007)

N. 113599.399

E. 546956.670

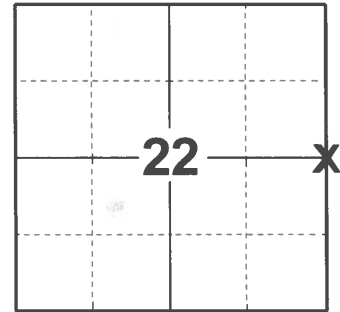
ELEVATION- - - - - DATUM - - - - -

FIELD WORK DATE: 01/05/2021

BASIS FOR MONUMENT LOCATION

1974 - PLS 922 SET HARRISON MONUMENT

2021 - PLS 2675 FOUND HARRISON 6"± BELOW THE GROUND SURFACE AND 2 WITNESS TREES. THE MONUMENT AGREES WITH BOTH WITNESS TREES. ACCEPTED THE HARRISON AS THE CORNER LOCATION. SET 4 NEW TIES AND MEASURED TO THE EXISTING WITNESS TREES.



LOCATION

(INDICATE CORNER BY "X")

SEAL:



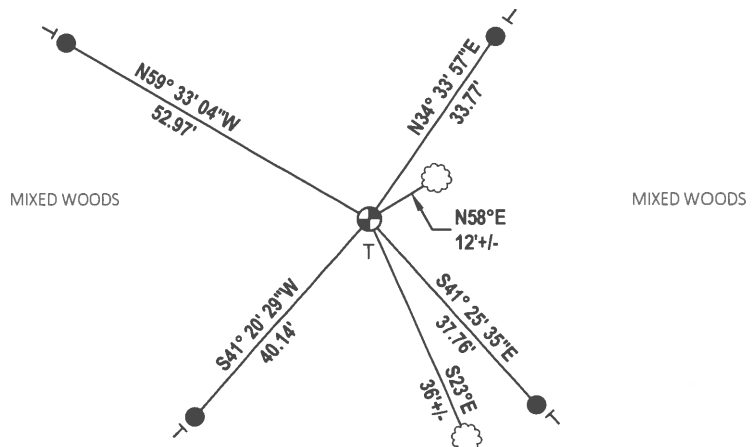
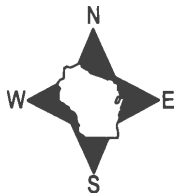
DATA SHOWN HERE ON THIS TIE SHEET IS CORRECT AND COMPLETE TO THE BEST OF MY KNOWLEDGE AND BELIEF.

PROFESSIONAL LAND SURVEYOR

DATE 3/3/2021

- TIE SKETCH

NOTE: CORNER IS 1/3 COVERED BY 16"± WHITE PINE.



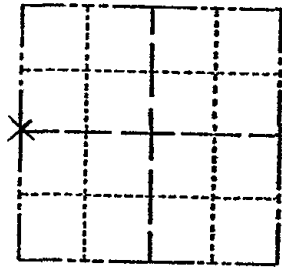
- SET 3/4" x 18" IRON REBAR, 1.50#/FT
- ⊕ FOUND HARRISON MONUMENT
- ⊖ VINYL "T" POST
- ☁ WITNESS TREE

ADAMS COUNTY

Survey Monument Record

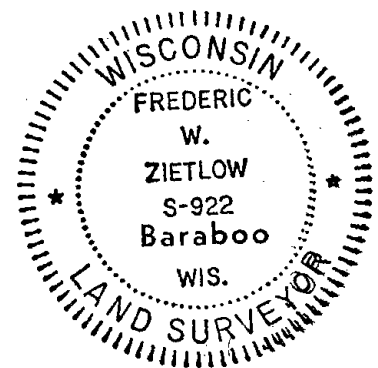
TYPE OF MONUMENT: 30" HARRISON
STATE PLANE COORDINATES: N _____
E _____
ELEVATION -- M.S.L. DATUM: _____
THETA ANGLE: _____
FIELD BOOK: 429 PAGE 22

CORNER NO. 482
SECTION 23
TOWN 14
RANGE 6



LOCATION
(Indicated by 'X')

SEAL:



BASIS FOR MONUMENT LOCATION

(Use reverse side if necessary)

Show info such as: History of corner, with reference to Vol. and pg, dates, surveyor; exact description of monument replaced; if location computed, by taped or EDM traverse; landowner remarks, etc.

8/19/74
CORNER O.K. 12-11-81 DW-SK
" " 3-17-66 GL

1-GONE, 4-LEFT 10/30/96 JG-SS
ALL OK 3-14-02 JG-SS
FOUND 1" x 2" WOODEN STAKE
IN NORTH-SOUTH FENCE
FIT GOOD WITH TRANSIT-
TAPE TRAVERSE

ALL OK 10/24/06 JG-JS
" 4-7-11 SS

CERTIFIED CORRECT:

Frederic W. Zietlow

Registered Land Surveyor

DATE: 8-27-74

TIE SKETCH

(Show at least four ties)

