

23
SECTION

14
TOWN

06
RANGE

ADAMS COUNTY

COUNTY CORNER NO: 91

ROMPORTOL ID: 41406230000

PUBLIC LAND SURVEY MONUMENT RECORD

TYPE OF MONUMENT: HARRISON
ADAMS COUNTY COORDINATES, NAD 83 (2007)

N. 111168.335

E. 552241.612

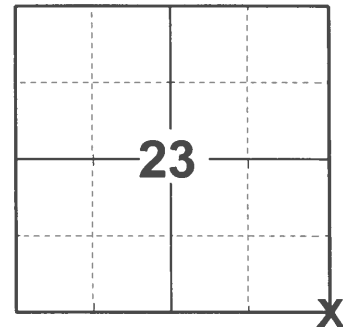
ELEVATION- _____ DATUM _____

FIELD WORK DATE: 01/05/2021

BASIS FOR MONUMENT LOCATION

1974 - PLS 922 SET HARRISON MONUMENT.

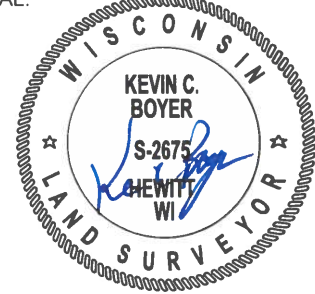
2021 - PLS 2675 FOUND HARRISON FLUSH WITH THE GROUND AND 1 WITNESS TREE. THE MONUMENT AGREES WITH THE WITNESS TREE. ACCEPTED THE HARRISON AS THE CORNER LOCATION. SET 4 NEW TIES AND MEASURED TO THE EXISTING WITNESS TREE.



LOCATION

(INDICATE CORNER BY "X")

SEAL:

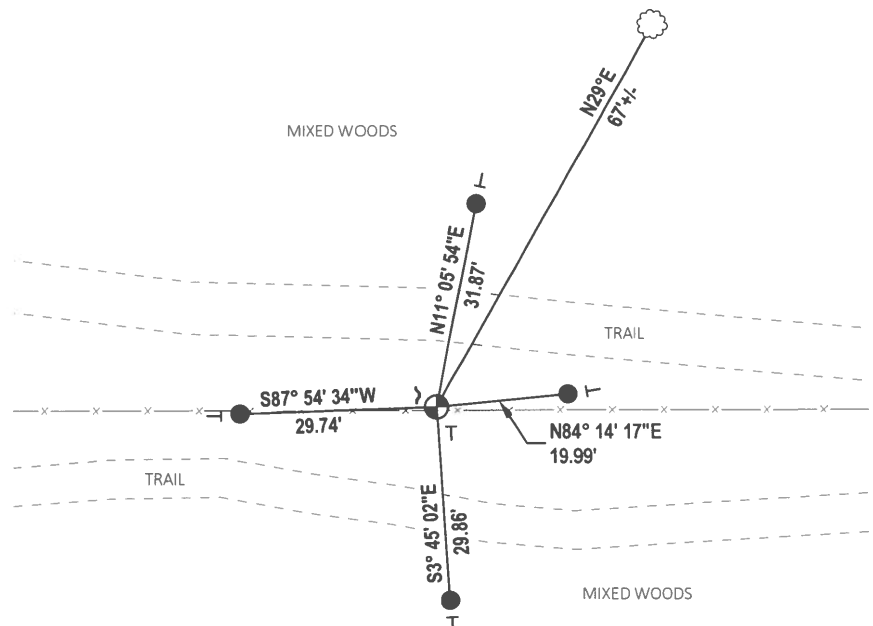
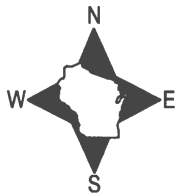


DATA SHOWN HERE ON THIS TIE SHEET IS CORRECT AND COMPLETE TO THE BEST OF MY KNOWLEDGE AND BELIEF.

PROFESSIONAL LAND SURVEYOR

DATE 3/3/2021

TIE SKETCH



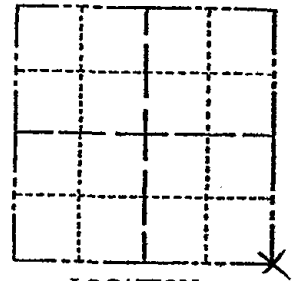
- SET 3/4" x 18" IRON REBAR, 1.50#/FT
- ⊙ FOUND HARRISON MONUMENT
- ~ STEEL FENCE POST
- VINYL "T" POST
- ☁ WITNESS TREE

ADAMS COUNTY

Survey Monument Record

TYPE OF MONUMENT: 30" HARRISON
 STATE PLANE COORDINATES: N _____
 E _____
 ELEVATION — M.S.L. DATUM: _____
 THETA ANGLE: _____
 FIELD BOOK: 429 PAGE 22

CORNER NO. 479
 SECTION 23
 TOWN 14
 RANGE 6



LOCATION
(Indicated by 'X')

BASIS FOR MONUMENT LOCATION

(Use reverse side if necessary)

Show info such as: History of corner, with reference to Vol. and pg, dates, surveyor; exact description of monument replaced; if location computed, by taped or EDM traverse; landowner remarks, etc.

8/19/74

FD. 3/4" x 24" REBAR IN (EAST-WEST)
 FENCE LINE, FIT GOOD WITH TRANSIT-

TAPE TRAVERSE

CORNER O.K.	10-29-76	GR-DCH
CORNER O.K.	12-16-81	SK-DW
" "	2-16-86	GL-SS
" "	6-20-91	JG
" "	4-25-96	JG-SS
1 NEW TIE	10-12-01	SS
OK	11-13-06	SJS
1 NEW, 16ONE	12-20-11	MS



CERTIFIED CORRECT:

Frederic W. Zietlow

Registered Land Surveyor

DATE: 8-27-74

TIE SKETCH

(Show at least four ties)

