

24  
SECTION

14  
TOWN

06  
RANGE

# ADAMS COUNTY

COUNTY CORNER NO: 92

ROMPORTOL ID: 41406240020

## PUBLIC LAND SURVEY MONUMENT RECORD

TYPE OF MONUMENT: HARRISON  
ADAMS COUNTY COORDINATES, NAD 83 (2007)

N. 111306.096

E. 554880.491

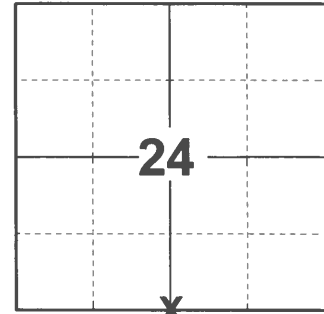
ELEVATION- \_\_\_\_\_ DATUM \_\_\_\_\_

FIELD WORK DATE: 01/05/2021

### BASIS FOR MONUMENT LOCATION

1975 - PLS 922 CHECKED COUNTY SURVEY RECORDS & IN 1895 CO. SURVEYOR BARRETT NOTED THAT HE FOUND AN INVERTED STONE AT THIS CORNER. WE EXCAVATED AND SOUNDED AT LARGE AREA AND COULD NOT RECOVER THE "STONE". FOUND A 3/4" IRON BAR AT THE FENCE CORNER SET BY DON MCCONAGHY IN 1969 AND MONUMENTED SAME. FET EDM TRAVERSE OF SECTION GOOD.

2021 - PLS 2675 FOUND HARRISON FLUSH WITH THE GROUND AND 2 TIES. THE MONUMENT AGREES WITH BOTH TIES. ACCEPTED THE HARRISON AS THE CORNER LOCATION. SET 2 NEW TIES AND MEASURED TO THE EXISTING TIES.



**LOCATION**

(INDICATE CORNER BY "X")

SEAL:

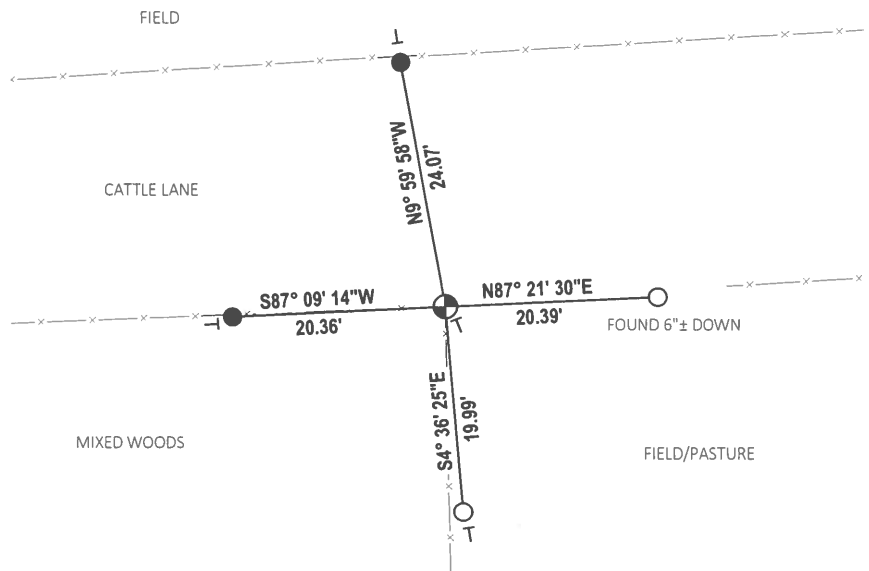
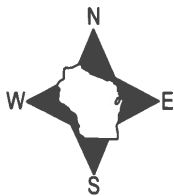


DATA SHOWN HERE ON THIS TIE SHEET IS CORRECT AND COMPLETE TO THE BEST OF MY KNOWLEDGE AND BELIEF.

PROFESSIONAL LAND SURVEYOR

DATE 3/3/2021

### TIE SKETCH



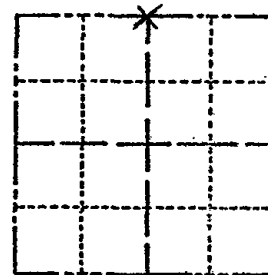
- SET 3/4" x 18" IRON REBAR, 1.50#/FT
- FOUND 3/4" IRON ROD
- ⊙ FOUND HARRISON MONUMENT
- ┌ VINYL "T" POST

# ADAMS COUNTY

## Survey Monument Record

TYPE OF MONUMENT: 30" HARRISON  
 STATE PLANE COORDINATES: N \_\_\_\_\_  
 E \_\_\_\_\_  
 ELEVATION — M.S.L. DATUM: \_\_\_\_\_  
 THETA ANGLE: \_\_\_\_\_  
 FIELD BOOK: \_\_\_\_\_ PAGE \_\_\_\_\_

CORNER NO. 887  
 SECTION 25  
 TOWN 14 N  
 RANGE 6 E



### BASIS FOR MONUMENT LOCATION

(Use reverse side if necessary)

Show info such as: History of corner, with reference to Vol. and pg. dates, surveyor; exact description of monument replaced; if location computed, by taped or EDM traverse; landowner remarks, etc.

CHECKED COUNTY SURVEY RECORDS  
 IN 1895 Co. SURVEYOR BARRETT  
 NOTED THAT HE FOUND AN INVERTED  
 STONE AT THIS CORNER. WE EXCAVATED  
 AND SOUNDED AT LARGE AREA AND COULD  
 NOT RECOVER THE "STONE". FOUND A 3/4"  
 IRON BAR AT THE FENCE CORNER SET BY  
 DON McCONAGHY IN 1969 AND MONUMENTED  
 SAME. FIT EDM. TRAVERSE OF SECTION  
 GOOD.

CORNER O.K. 10-29-76 GR. DCH  
 CORNER O.K. 10-17-81 SK-DW  
 " " 2-13-86 GE SS  
 " " 7-10-90 SS  
 1 NEW TIE 7-10-90 SS  
 ALL OK 10/30/96 JG-SS

SEAL:

LOCATION  
 (Indicated by 'X')



CERTIFIED CORRECT:

*Frederic W. Zietlow*

Registered Land Surveyor

DATE: NOVEMBER 20, 1975

### TIE SKETCH

(Show at least four ties)

MON. OK - NOTHING  
 AVAIL. FOR TIES 10-12-01 SS

OK, 11-13-06 - JG  
 OK, 12-20-11 MS

HARRISON IMMEDIATELY  
 SOUTH OF WOODEN CORNER POST  
 SIGN ON POST

