

PUBLIC LAND SURVEY MONUMENT RECORD

TYPE OF MONUMENT: HARRISON (BROKEN TOP)
ADAMS COUNTY COORDINATES, NAD 83 (2007)

N. 105695.479

E. 546920.502

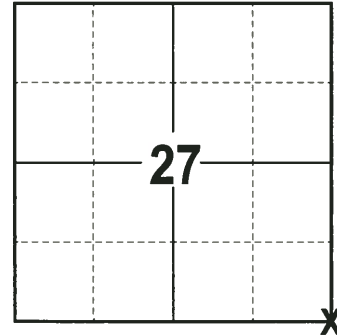
ELEVATION- DATUM

FIELD WORK DATE: 06/28/2017

BASIS FOR MONUMENT LOCATION

1975 - PLS 878 REPLACED RAILROAD SPIKE WITH HARRISON. CORNER WAS SET IN THE SURVEY OF THE FOLLENDORF PROPERTY BY MID-STATES. EDM CHECK VERIFIED THE CORNER LOCATION. DISTANCES ARE TO NAIL AND DISC.

2017 - PLS 2994 FOUND HARRISON MONUMENT WITH A BROKEN TOP 10" UNDER THE ROAD SURFACE. 3 TIES AND 2 WITNESSES. THE MONUMENT AGREES WITH THE EXISTING TIES AND WITNESSES. ACCEPTED HARRISON WITH BROKEN TOP AS THE CORNER LOCATION. SET 2 NEW TIES AND RE-MEASURED TO THE EXISTING TIES AND WITNESSES.



LOCATION
(INDICATE CORNER BY "X")

SEAL:



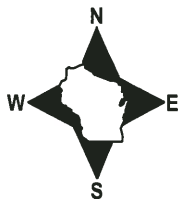
DATA SHOWN HERE ON THIS TIE SHEET IS CORRECT AND COMPLETE TO THE BEST OF MY KNOWLEDGE AND BELIEF.

PROFESSIONAL LAND SURVEYOR

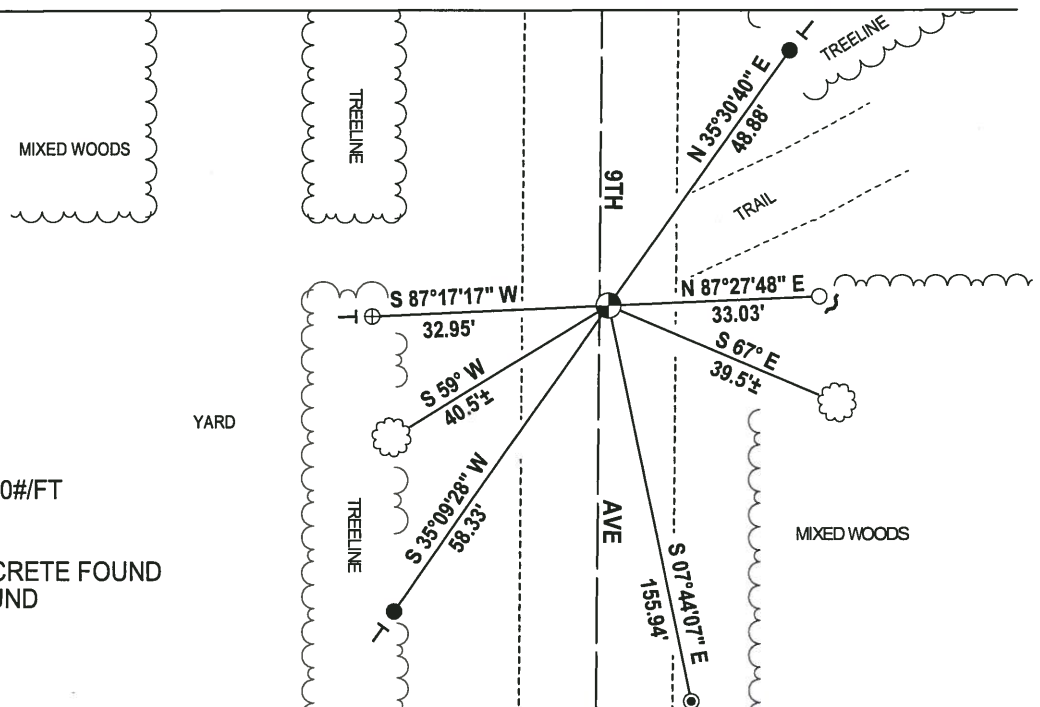
DATE 7-14-17

- TIE SKETCH

NOTE: THE CORNER FALLS 2± EAST OF THE CENTERLINE OF 9TH AVE.



- 3/4" x 18" IRON REBAR SET, 1.50#/FT
- 3/4" IRON ROD FOUND
- ⊕ 1-1/4" O.D. IRON PIPE FOUND
- ⊙ USGS ALUMINUM CAP IN CONCRETE FOUND
- ⊙ HARRISON (BROKEN TOP) FOUND
- ✓ STEEL FENCE POST
- └ VINYL "T" POST
- ⊙ WITNESS TREE FOUND

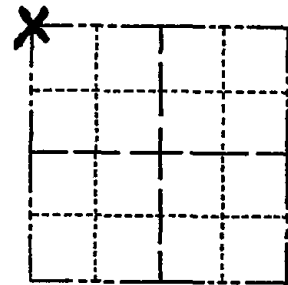


ADAMS COUNTY

CORNER NO. 567
SECTION 35
TOWN 14
RANGE 6

Survey Monument Record

TYPE OF MONUMENT: Harrison standard
STATE PLANE COORDINATES: N _____
E _____
ELEVATION — M.S.L. DATUM: _____
THETA ANGLE: _____
FIELD BOOK: _____ PAGE _____



LOCATION
(Indicated by 'X')

BASIS FOR MONUMENT LOCATION

(Use reverse side if necessary)

Show info such as: History of corner, with reference to Vol. and pg, dates, surveyor; exact description of monument replaced; if location computed, by taped or EDM traverse; landowner remarks, etc.

Replaced railroad spike used as corner in the survey of the Follendorf property by Midstates. Our EDM check of this corner verified the location.

CORNER O.K. 10-9-76 GR-SS

CORNER O.K. 12-16-81 SK-DW

CORNER O.K. 2-6-86 GR-SS

1-GONE 10-22-96 SS-JG

CoR OK 12/6/95 JG-SS

ALL OK 3-20-01, JG

2-NEW, 1-GONE, 11-10-06, JG-SS

ALL OK 1-17-11 MS, SS

SEAL:



CERTIFIED CORRECT:

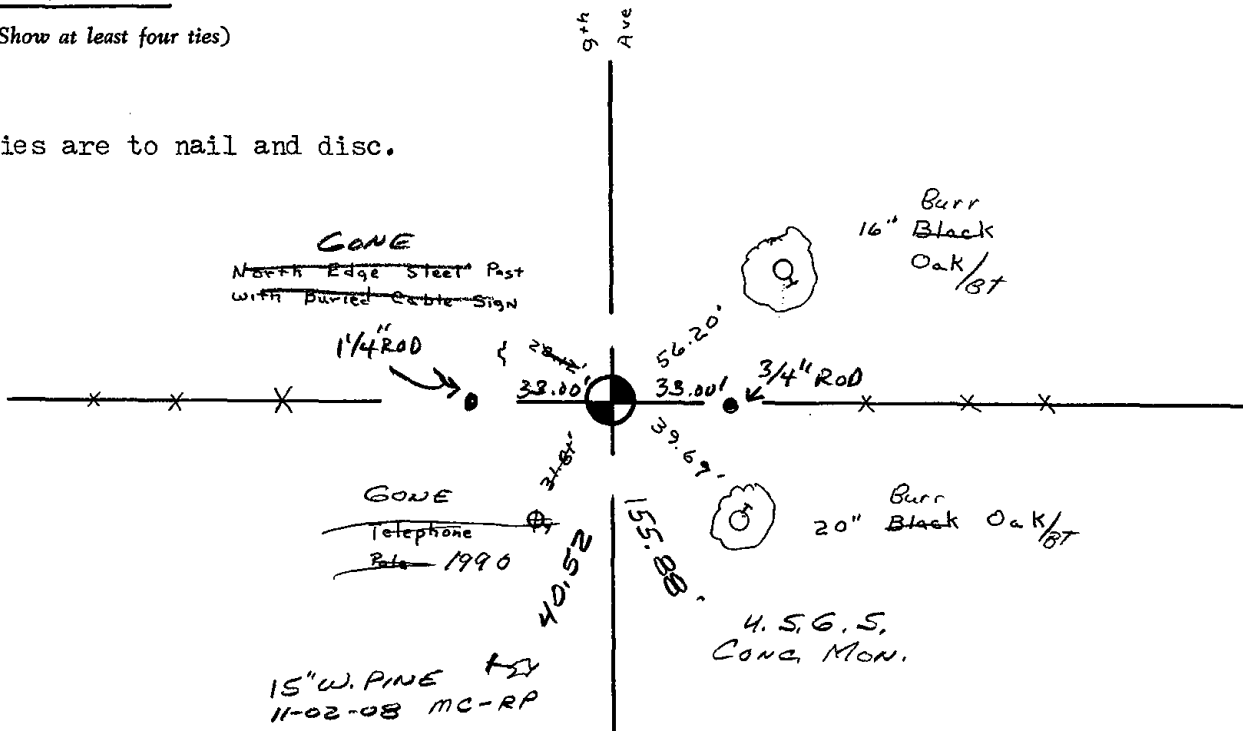
Anthony B. Kiedrowski
Registered Land Surveyor

DATE: 1/3/75

TIE SKETCH

(Show at least four ties)

Ties are to nail and disc.

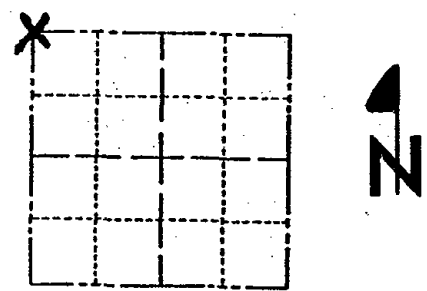


ADAMS COUNTY

Survey Monument Record

TYPE OF MONUMENT: Harrison standard
 STATE PLANE COORDINATES: N _____
 E _____
 ELEVATION — M.S.L. DATUM: _____
 THETA ANGLE: _____
 FIELD BOOK: _____ PAGE _____

CORNER NO. 567
 SECTION 35
 TOWN 14
 RANGE 6



LOCATION
(Indicated by 'X')

SEAL:



BASIS FOR MONUMENT LOCATION

(Use reverse side if necessary)

Show info such as: History of corner, with reference to Vol. and pg, dates, surveyor; exact description of monument replaced; if location computed, by taped or EDM traverse; landowner remarks, etc.

Replaced railroad spike used as corner in the survey of the Follendorf property by Midstates. Our EDM check of this corner verified the location.

CORNER O.K. 10-9-76 GR-SS
 CORNER O.K. 12-16-81 SK-DW
 CORNER O.K. 2-6-86 CR-SS
 NEW TIES 12-14-98 SH-BF
 Top Broken off 11-2-88 MC+RP
 one new tie

CERTIFIED CORRECT:

Anthony B. Kiedrowski
 Registered Land Surveyor

DATE: 1/3/75

TIE SKETCH

(Show at least four ties)

