

## PUBLIC LAND SURVEY MONUMENT RECORD

TYPE OF MONUMENT: HARRISON  
 ADAMS COUNTY COORDINATES, NAD 83 (2007)

N. 105799.113

E. 549560.740

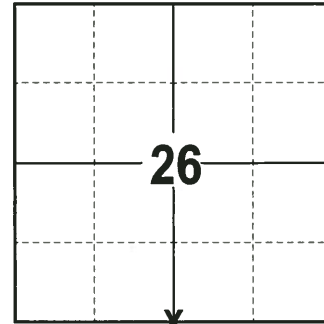
ELEVATION-      DATUM     

FIELD WORK DATE: 06/29/2017

### BASIS FOR MONUMENT LOCATION

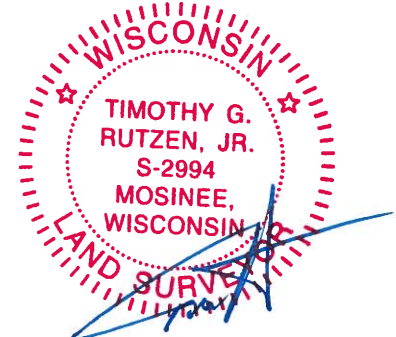
1974 - PLS 878 STATED THIS CORNER WAS PREVIOUSLY SET 33' WEST OF THE CURRENT LOCATION. THE LANDOWNER TO THE WEST COMPLAINED OF LOCATION FOR GROUSE LN. ABOUT THIS TIME WE ACQUIRED TWO VOLUMES OF THE OLD COUNTY SURVEYOR RECORDS. A SURVEY WAS DONE FROM THIS CORNER IN 1902 BY BARRETT, VOL. 1, PG 6. A ROAD WAS LAID OUT ALONG THE NORTH - SOUTH QUARTER LINE AND TERMINATED AT THE QUARTER CORNER. THIS EXPLAINS WHY THERE IS A 33' OFFSET IN THE FENCE LINES. SET HARRISON MONUMENT AT CORNER LOCATION, DISTANCES ARE TO NAIL AND DISC.

2017 - PLS 2994 FOUND HARRISON MONUMENT FLUSH WITH THE GROUND SURFACE AND 1 WITNESS. THE MONUMENT AGREES WITH THE EXISTING WITNESS. ACCEPTED HARRISON AS THE CORNER LOCATION. SET 4 NEW TIES AND RE-MEASURED TO THE EXISTING WITNESS.



**LOCATION**  
 (INDICATE CORNER BY "X")

SEAL:



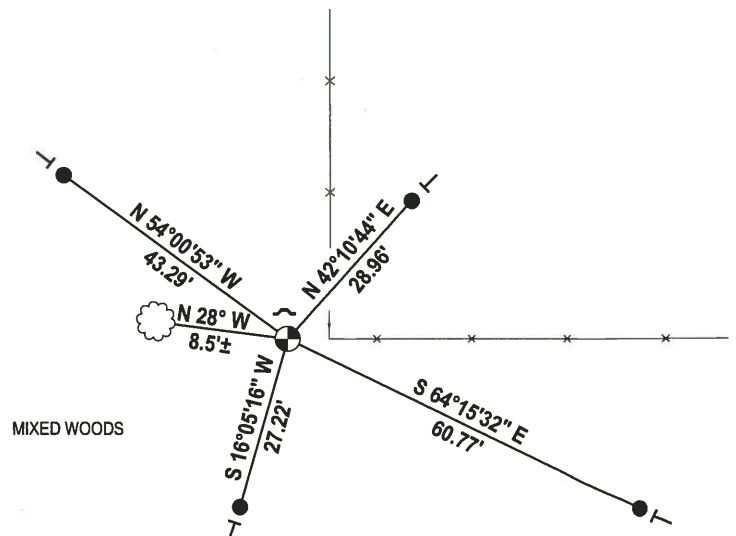
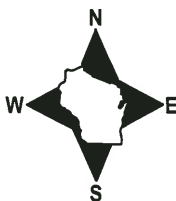
DATA SHOWN HERE ON THIS TIE SHEET IS CORRECT AND COMPLETE TO THE BEST OF MY KNOWLEDGE AND BELIEF.

PROFESSIONAL LAND SURVEYOR

DATE 7-14-17

### - TIE SKETCH -

NOTE: THE CORNER FALLS 2'± WEST OF 4"X4" FENCE POST.



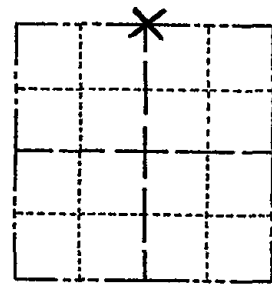
- 3/4" x 18" IRON REBAR SET, 1.50#/FT
- ⊙ HARRISON FOUND
- ⌵ STEEL FENCE POST
- ┆ VINYL "T" POST
- ☁ FOUND WITNESS TREE

# ADAMS COUNTY

## Survey Monument Record

TYPE OF MONUMENT: 30" HARRISON  
 STATE PLANE COORDINATES: N \_\_\_\_\_  
 E \_\_\_\_\_  
 ELEVATION — M.S.L. DATUM: \_\_\_\_\_  
 THETA ANGLE: \_\_\_\_\_  
 FIELD BOOK: /// PAGE 8

CORNER NO. 367  
 SECTION 35  
 TOWN 14  
 RANGE 6



LOCATION  
(Indicated by 'X')

SEAL:



### BASIS FOR MONUMENT LOCATION

(Use reverse side if necessary)

Show info such as: History of corner, with reference to Vol. and pg. dates, surveyor; exact description of monument replaced; if location computed, by taped or EDM traverse; landowner remarks, etc.

This corner previously set 33' west of this location. Landowner to west complained of location for Grouse Ln. About this time we acquired the two volumes of old county surveyor records. A survey was done from this corner in 1902 by Barrett, Vol. 1, pg 6. A road was laid out along the north-south quarter line and terminated at the quarter corner. This explains why there is a 33' offset in the fencelines

TREES DEAD - RETIED 10-9-76 GRS  
 CORNER OK 12-16-81 SK + DW  
 ALL OK 10-22-90 SS-JG  
 1 - GONE, 4 TIES LEFT 4-25-96 JG-SS

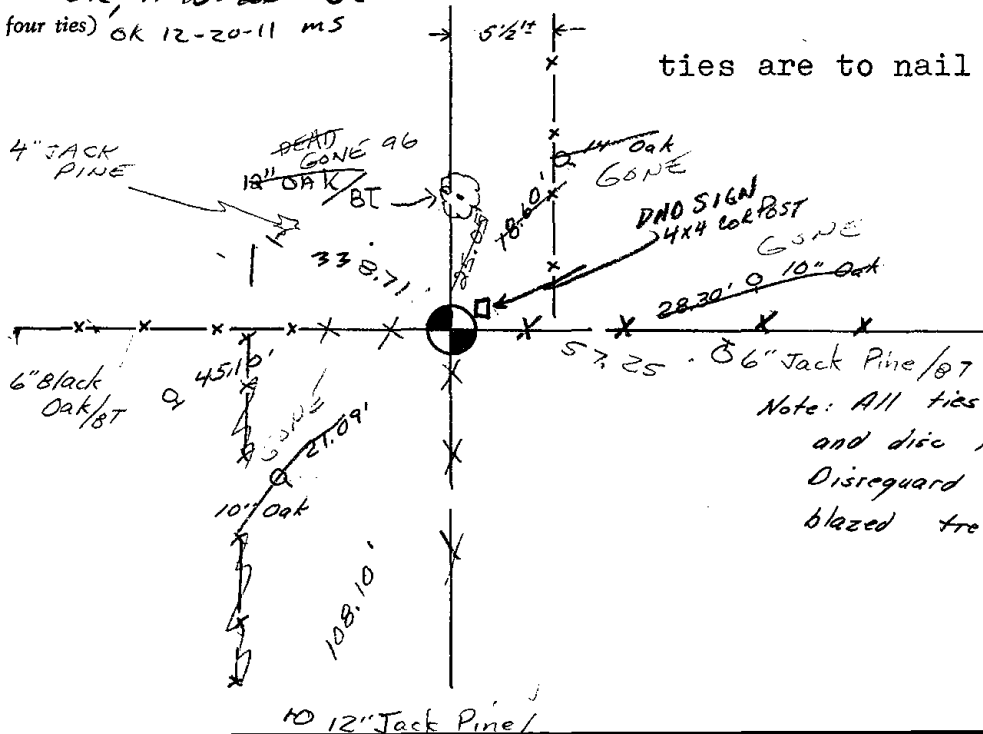
CERTIFIED CORRECT:

*Anthony B. Kiedrowski*  
 Registered Land Surveyor

DATE: 5/2/74

### TIE SKETCH

OK 3-7-02-JG  
 OK 11-10-06-JG  
 (Show at least four ties) OK 12-20-11 MS



ties are to nail and disc.

Note: All ties are P.K. nail and disc in blazed trees. Disregard all other blazed trees.

ADAMS COUNTY

Survey Monument Record

TYPE OF MONUMENT: 30" HARRISON

STATE PLANE COORDINATES: N \_\_\_\_\_ E \_\_\_\_\_

ELEVATION - M.S.L. DATUM: \_\_\_\_\_

THETA ANGLE: \_\_\_\_\_

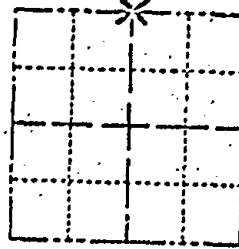
FIELD BOOK: III PAGE 8

CORNER NO. 367

SECTION 35

TOWN 14

RANGE 6



LOCATION  
(Indicated by 'X')

SEAL:



BASIS FOR MONUMENT LOCATION

(Use reverse side if necessary)

Show info such as: History of corner, with reference to Vol. and pg. dates, surveyor; exact description of monument replaced; if location computed, by taped or EDM traverse; landowner remarks, etc.

This corner previously set 33' west of this location. Landowner to west complained of location for Grouse Ln. About this time we acquired the two volumes of old county surveyor records. A survey was done from this corner in 1902 by Barrett, Vol. 1, pg 6. A road was laid out along the north-south quarter line and terminated at the quarter corner. This explains why there is a 33' offset in the fencelines

CERTIFIED CORRECT:

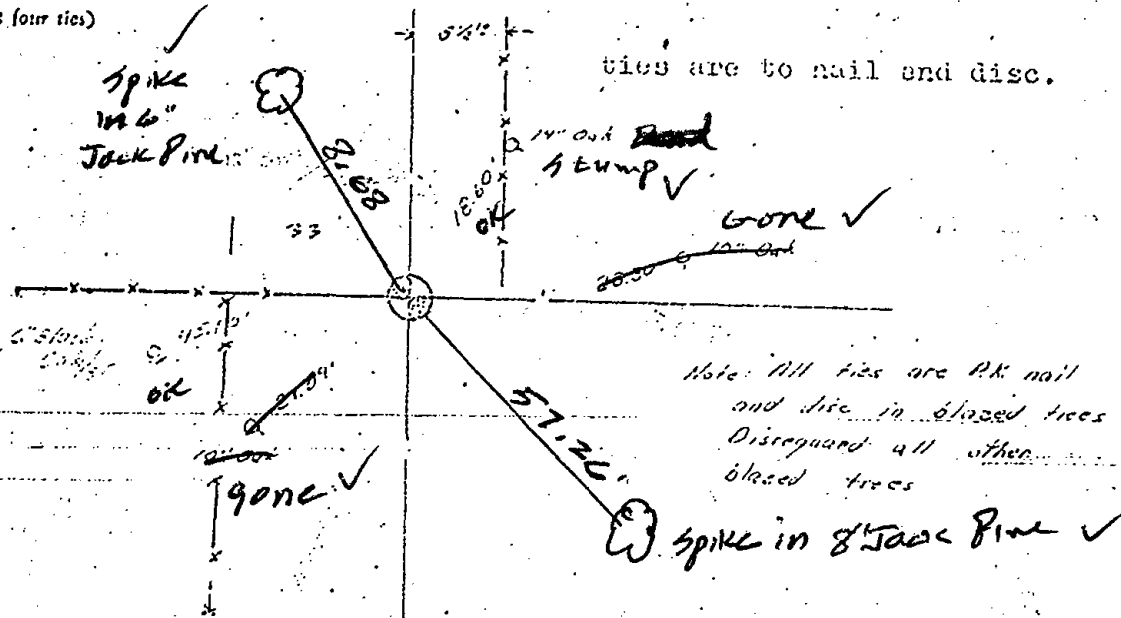
*Anthony B. Kiedrowski*  
Registered Land Surveyor

DATE: 5/2/74

June 24 86 Ken Carlson

TIE SKETCH

(Show at least four ties)



ties are to nail end disc.

Note: All ties are PK nail and disc in blazed trees. Discard all other blazed trees.