

## PUBLIC LAND SURVEY MONUMENT RECORD

TYPE OF MONUMENT: HARRISON  
 ADAMS COUNTY COORDINATES, NAD 83 (2007)

N. 105905.712

E. 552131.416

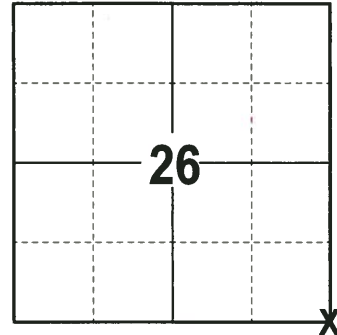
ELEVATION- \_\_\_\_\_ DATUM \_\_\_\_\_

FIELD WORK DATE: 06/29/2017

### BASIS FOR MONUMENT LOCATION

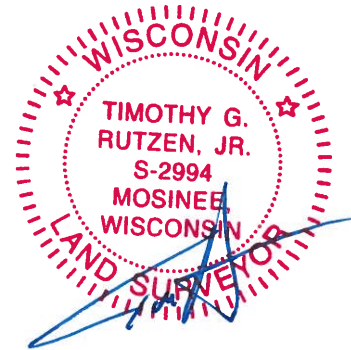
1975 - PLS 878 ACCEPTED IRON ROD SET BY MIDSTATES AFTER ANALYZING THEIR SURVEY OF THE FOLLEMDORF PROPERTY. ALSO CHAINED A HALF MILE TO THE NORTH, SEARCHED FOR STUMPS FROM BEARING TREES MARKED BY BARRETT. CAN NOT EXPLAIN WHY THERE IS A FENCE RUNNING EAST ABOUT 70' SOUTH OF THE CORNER LOCATION, OR WHY THE DISTANCE ALONG THE NORTH LONE OF THE NE 1/4 VARIES FROM THAT OF BARRETT. THE TERRAIN IS ROUGH AND A LONG WAY FROM ANY OLD ROADS. SET HARRISON MONUMENT AT CORNER LOCATION, DISTANCES ARE TO NAIL AND DISC.

2017 - PLS 2994 FOUND HARRISON MONUMENT FLUSH WITH THE GROUND SURFACE AND 3 WITNESSES. THE MONUMENT AGREES WITH THE EXISTING WITNESSES. ACCEPTED HARRISON AS THE CORNER LOCATION. SET 4 NEW TIES AND RE-MEASURED TO THE EXISTING WITNESSES.



**LOCATION**  
 (INDICATE CORNER BY "X")

SEAL:

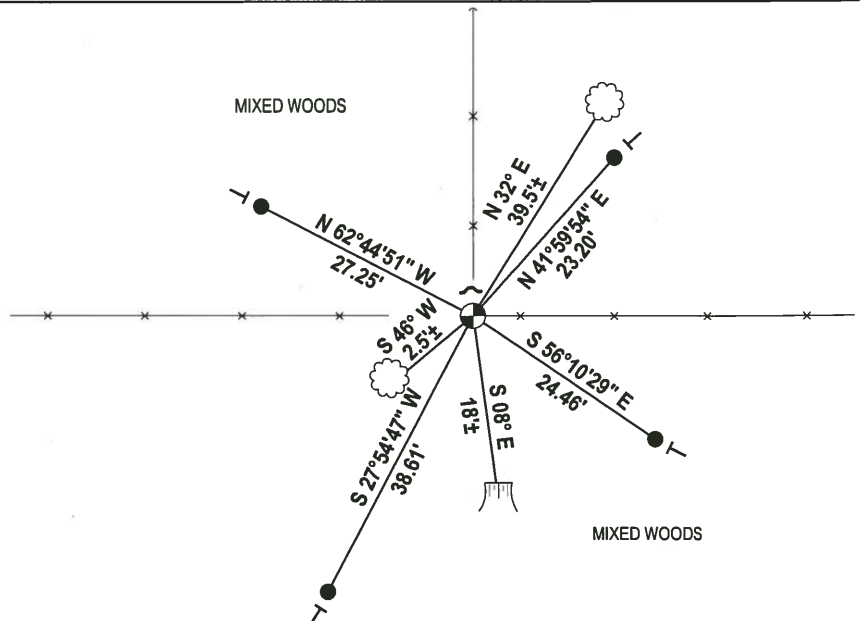
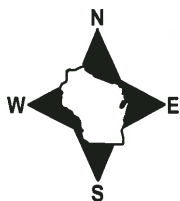


DATA SHOWN HERE ON THIS TIE SHEET IS CORRECT AND COMPLETE TO THE BEST OF MY KNOWLEDGE AND BELIEF.

PROFESSIONAL LAND SURVEYOR

DATE 7-14-17

### - TIE SKETCH



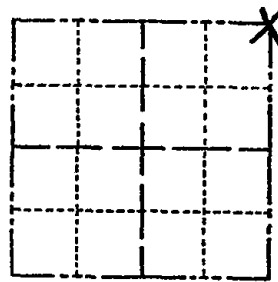
- 3/4" x 18" IRON REBAR SET, 1.50#/FT
- ⊕ HARRISON FOUND
- ✓ STEEL FENCE POST
- ┆ VINYL "T" POST
- ⌋ WITNESS TREE STUMP FOUND
- ☼ WITNESS TREE FOUND

ADAMS COUNTY

Survey Monument Record

TYPE OF MONUMENT: Harrison standard
STATE PLANE COORDINATES: N
E
ELEVATION - M.S.L. DATUM:
THETA ANGLE:
FIELD BOOK: PAGE

CORNER NO. 449
SECTION 35
TOWN 14
RANGE 6



LOCATION (Indicated by 'X')

SEAL:



BASIS FOR MONUMENT LOCATION

(Use reverse side if necessary)

Show info such as: History of corner, with reference to Vol. and pg, dates, surveyor; exact description of monument replaced; if location computed, by taped or EDM traverse; landowner remarks, etc.

Accepted iron rod set here by Midstates after analyzing their survey of the Follendorf property. I also rough chained a half mile to the north. We searched in vain for stumps from bearing trees marked by Barrett. I can't explain why there is an old fence running east about 70' south of here, or why the distance along the north line of the NE 1/4 varies from that of Barrett, This is pretty rough terrain and a long way from any old roads.

- CORNER O.K. 10-9-76 GR-SS
CORNER O.K. 12-15-81 SK + BW
" " 2-13-86 GR-SS
1-NEW 10-22-90 SS-JG
1-GONE, 1-NEW 4-25-96 SG-SS
1-GONE, 1-NEW, 3-7-02 - JG
OK 11-10-06 SJS

CERTIFIED CORRECT:

Signature of Anthony B. Kiedrowski
Registered Land Surveyor
DATE: 1/2/75

TIE SKETCH

OK 12-20-11 MS

(Show at least four ties)

Ties are to nail and disc.

